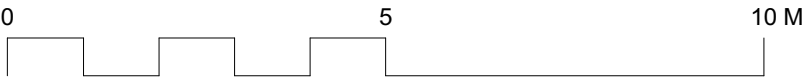
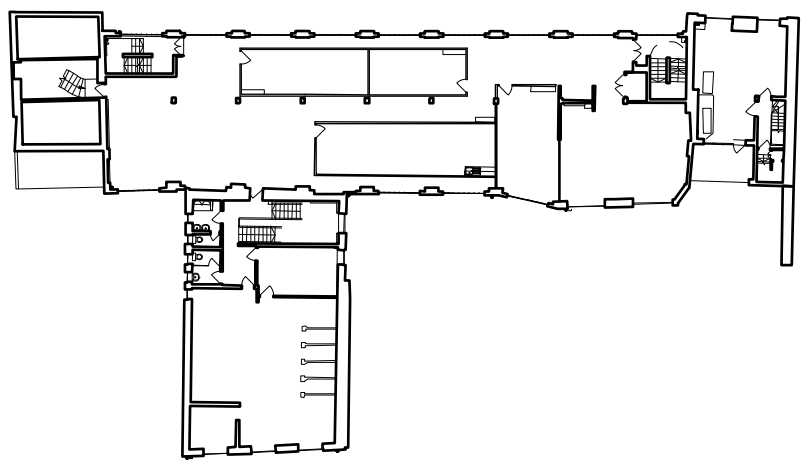


Pole mounted AQ monitor unit,
min. 1.5m above roof level

Facade, bracket mounted
AQ monitor unit, min. 0.5m
from face of facade, min.
1.5m above ground level

Facade, bracket mounted
AQ monitor unit, min. 0.5m
from face of facade, min.
1.5m above ground level

**60-70 Shorts Gardens - Condition 10
Proposed AQ Monitor Locations
21.05.10 - BGY North Elevation Mark Up**



GENERAL NOTES.

All dimensions to be checked on site prior to commencement of any works, and/or preparation of any shop drawings.

Sizes of and dimensions to any structural elements are indicative only. See structural engineers drawings for actual sizes / dimensions.

Sizes of and dimensions to any service elements are indicative only. See service engineers drawings for actual sizes and dimensions.

This drawing to be read in conjunction with all other Architect's drawings, specifications and other Consultants' information.

All proprietary systems shown on this drawing are to be installed strictly in accordance with the Manufacturers/Suppliers recommended details.

Any discrepancies between information shown on this drawing and any other contract information or manufacturers/suppliers recommendations is to be brought to the attention of the Architect

DO NOT SCALE FROM THIS DRAWING.

KEY

- NOTES.
1. Existing red brickwork
 2. Existing stock brickwork
 3. Existing glazed white brickwork
 4. Existing render
 5. Existing metal framed windows
 6. Existing arches with brick and panel infill
 7. Existing metal guard rail to roof
 8. Existing glazed entrance doors

1 STAGE 4 ISSUED FOR TENDER 07/05/21

REVISION DATE

Buckley Gray Yeoman
Studio 4.04 The Tea Building 56 Shoreditch High Street
London E1 6JJ T: 020 7033 9913 F: 020 7033 9914

CLIENT SPAN GROUP

PROJECT SHORT'S GARDENS

DRAWING Existing North Elevation

SCALE 1:100 @ A1 (1:200 @ A3)

DATE MAY 2021 DRAWN BY AHI

DWG No. 1087_EE-01 REVISION T1

DRAWING STATUS STAGE 4

Information contained on this drawing is the sole copyright of Buckley Gray Yeoman and is not to be reproduced without their permission.