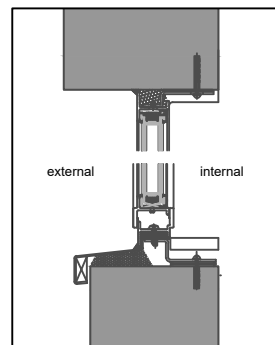




new galvanised black gloss painted metal framed windows
with rendered columns

new galvanised black gloss painted metal framed windows
with rendered columns



Proposed Window detail
Scale 1:10@A3

Rev A - timber acoustic screening added to roof. 02.11.20
 Rev B - existing glass blocks to basement to be replaced with
 galvanised polyester powder coated steel framed windows
 and rendered columns 12.01.21
 Rev C - window detail added 21.01.21
 Rev D - window bays changed from 6 to 3, finish changed to gloss 22.06.21

| rev | description | date | issue | checked |
|--|---------------------------|--|----------|---------|
| NRa | NICOLA ROBERTS architects | nicola@nicolarobertsarchitects.co.uk 01799 542104/07740166527 | | |
| dwg title Proposed Front Elevation | | | | |
| client Salaft Properties Ltd | | | | |
| project 20 Flaxman Terrace, London WC1H 9AT | | | | |
| scale 1:10/1:100@A3 | drawn NR | date January 2020 | | |
| cad reference dwg | | | PLANNING | |
| job 20FT | dwg (FT)30 | revision D | | |