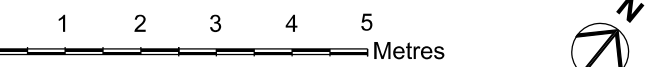
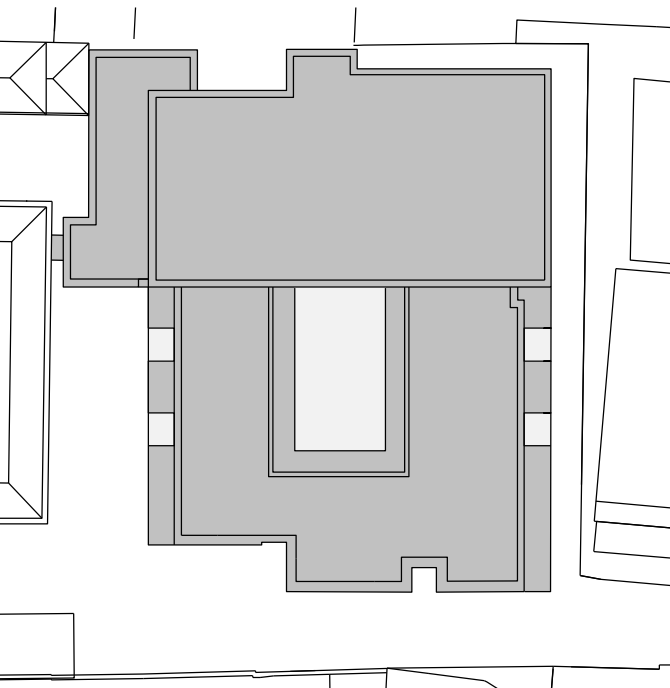


Notes





- All dimensions to be checked on site
- Do not scale off this drawing
- All dimensions are shown in mm unless otherwise stated
- Refer to drawing issue sheet for purpose of issue
- If in doubt ask

© Llewelyn Davies

## Key Plan



Key:

- |   |  |
|---|--|
|  | NEW STRUCTURE                                    |
|  | NEW FABRIC                                       |
|  | EXISTING FABRIC                                  |
|  | MRI SUITE SUBJECT TO TENANT FIT-OUT REQUIREMENTS |
| <b>R</b>  | DRY RISER OUTLET                                 |
| <b>RI</b>   | DRY RISER INLET                                  |
| <b>WM</b>   | WATER METER                                      |

— DENOTES INDICATIVE SITE BOUNDARY LINE

Notes:

- M-J POSITIONS TO BE CONFIRMED WITH BRICK MANUFACTURER - SEE ELEVATIONS & 1:50 PLANS
- REFER TO 001000 SERIES DWGS FOR SECTIONS SHOWN
- IT IS ASSUMED ALL CLADDING ELEMENTS OTHER THAN WINDOWS TO BE ACCESSED FOR CLEANING FROM LEVEL 00 USING SQUEEGEE UP TO 4 STOREYS
- DIMENSIONS RUNNED UP OR DOWN TO THE NEAREST WHOLE NUMBER
- TO BE READ IN CONJUNCTION WITH STAGE 4 FIRE STRATEGY REPORT MAS-ARUP-XX-XX-SP-N-0007 AND 750000 SERIES DWGS

|    |                        |            |        |
|----|------------------------|------------|--------|
|    |                        |            |        |
|    |                        |            |        |
|    |                        |            |        |
|    |                        |            |        |
|    |                        |            |        |
| 01 | SECTION 73 APPLICATION | 17.06.2021 | PB     |
| ev | Description            | Date       | By Chk |

|                                    |                     |
|------------------------------------|---------------------|
| Structural Consultant              | Services Consultant |
| <b>AECOM</b>                       | <b>ARUP</b>         |
| Cost Consultant                    |                     |
| <b>EQUALS CONSULTING</b>           |                     |
| Project Title                      |                     |
| <b>BEDFORD PASSAGE DEVELOPMENT</b> |                     |
| <b>BEDFORD HOUSE:</b>              |                     |
| MRI SUITE (D1), COMMERCIAL (B1)    |                     |
| <b>BEDFORD COURT:</b>              |                     |
| AFFORDABLE HOUSING (C3)            |                     |
| Client                             |                     |
| <b>MIDDLESEX ANNEXE LLP</b>        |                     |
| Drawing Title                      |                     |
| <b>GA PLAN - LEVEL 08</b>          |                     |

|                                  |                   |
|----------------------------------|-------------------|
| Project Number                   | Revision          |
| <b>LD15 078.00</b>               | <b>P01</b>        |
| Drawing Number                   |                   |
| <b>BPD-LDW-NB-08-DR-A-000010</b> |                   |
| Scale @ A1                       | Date              |
| <b>1:100</b>                     | <b>17/06/2021</b> |

**LEWELYN  
DAVIES**

**Architects | Planners | Designers**

3rd floor | 2 Dyott Street | London | WC1A 1DE  
T +44(0)20 7907 7900 | E [london@ldavies.com](mailto:london@ldavies.com)

[www.ldavies.com](http://www.ldavies.com)