

Waste Management Plan

1 Hurdwick Place, Mornington Crescent, London, NW1 2JE



Project Reference	GAA-00452
Document Number	A01-NL-R3-01-WM
Revision Number	P01
Date	3 ND June 2021
Written By	Risha Patel
Checked By	Gimy Getahun
Reviewed By	Carmen Sala

Contents

Waste Storage Design	04
0. Location Plan	04
1. Waste & Recycling containers and quantities	05
2. Size of Containers	05
3. Waste Storage and Collection Strategy	06
Appendix 1.0	07

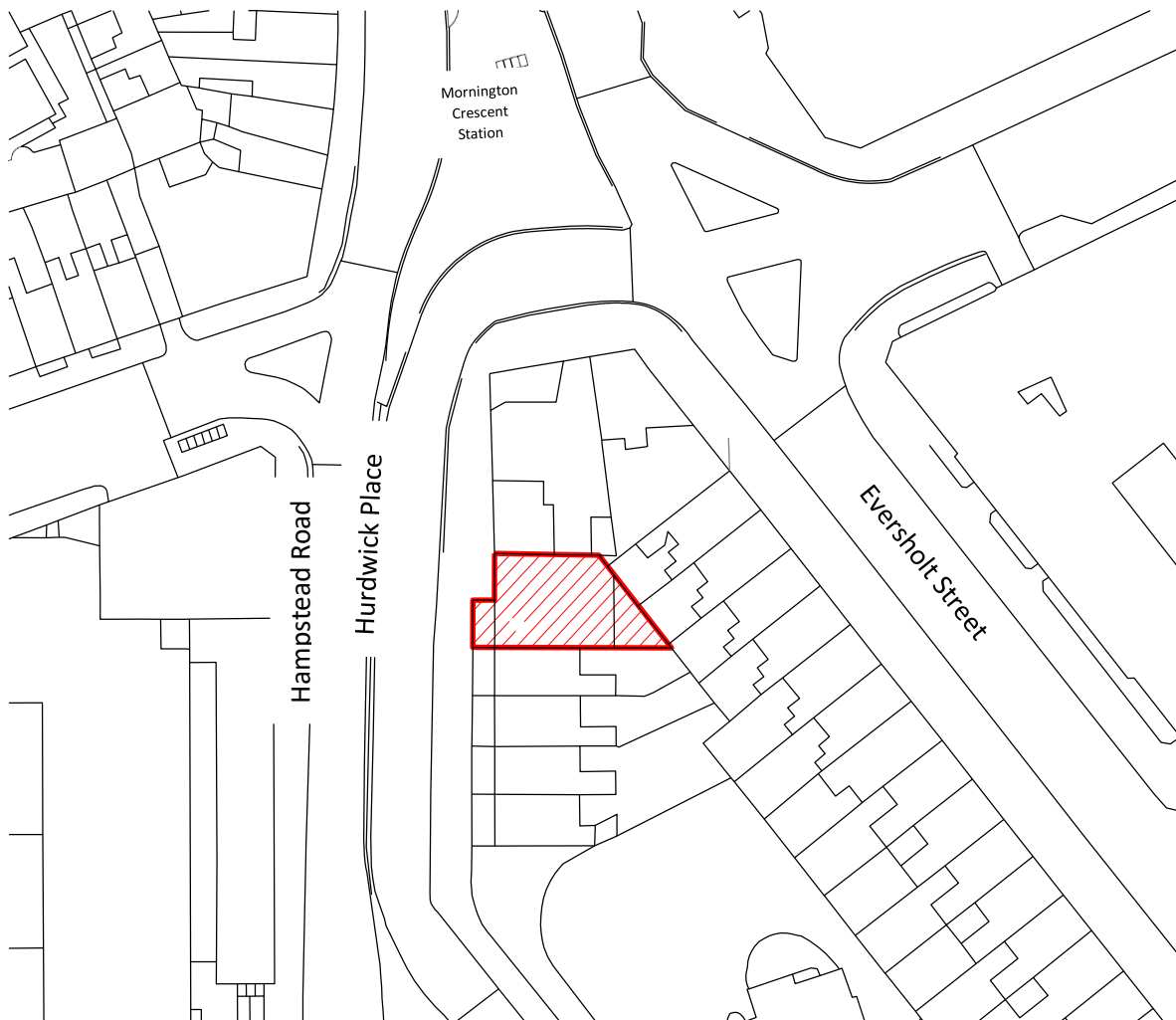
Waste Storage Design

The following specification shall be read in conjunction with the relevant drawings supplied.

0. Location Plan

The site currently comprises a four-storey dwelling with a commercial property located on Hampstead Road and adjacent to Mornington Crescent Tube Station.

The site is an end terrace building. The proposal involves the alterations to the First, Second and Third floor. The proposed basement contains 2 units with one bedroom each. The proposal on the First Floor contains, 1 unit with two bedrooms and the Second and Third Floor Plans, have a Studio unit each.



Site Location Plan at 1:1250

1. Waste & Recycling containers and quantities

- 2x Studio Flats
- 2x1B Flat
- 1x 2B Flat

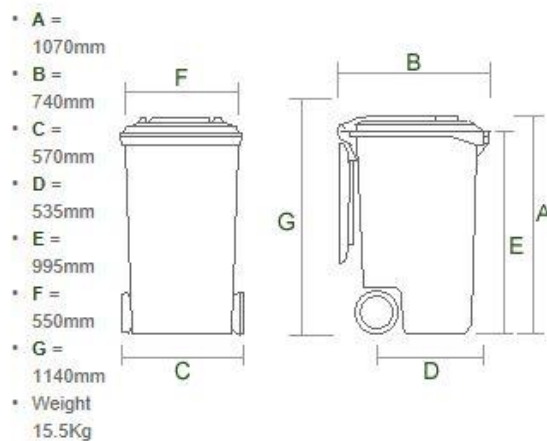
Total: 760 l

- Refuse: 2x120 l
- Recycling: 2x140 l
- Food Waste: 1x240 l

2. Size of Containers

- The 240 litre container for non-recyclable household waste has the following dimensions: Width 570 mm, Height 1,140 mm, and Length 535 mm;
- The 240 litre container for mixed dry recycling has the following dimensions: Width 570 mm, Height 1,140 mm, and Length 535 mm;
- The 240 litre container for organic waste has the following dimensions: Width 570 mm, Height 1,140 mm, and Length 535 mm;

240 Litre Wheelie Bin



(Dimensions are a guide only)

3. Waste Storage and Collection Strategy

The development is designed to ensure that sufficient waste storage space is provided within a well-used area of each of the units. The internal waste storage provision will assist in promoting the segregation of residual (non-recyclable) and recyclable materials at source. Indeed, all households will be responsible for segregating their generated waste at source into nonrecyclable and mixed-recyclable waste streams.

Residents will be responsible for manually transporting their waste to the bin stores where they will deposit it into the appropriate waste container. All bins and waste storage areas will be clearly labelled to prevent cross contamination of residual waste and recyclable waste. The Landlord will be responsible of transporting the wheelie bins to Hurdwick Place the day of the collection (every Friday) between 06:00-14:00h, via a Management company who will be responsible of moving the bins from the waste store to the street and back with a Cargomaster Powered Stair Climbers C141 Vario (or similar approved) to transport the bins over the stairs at Front Entrance.

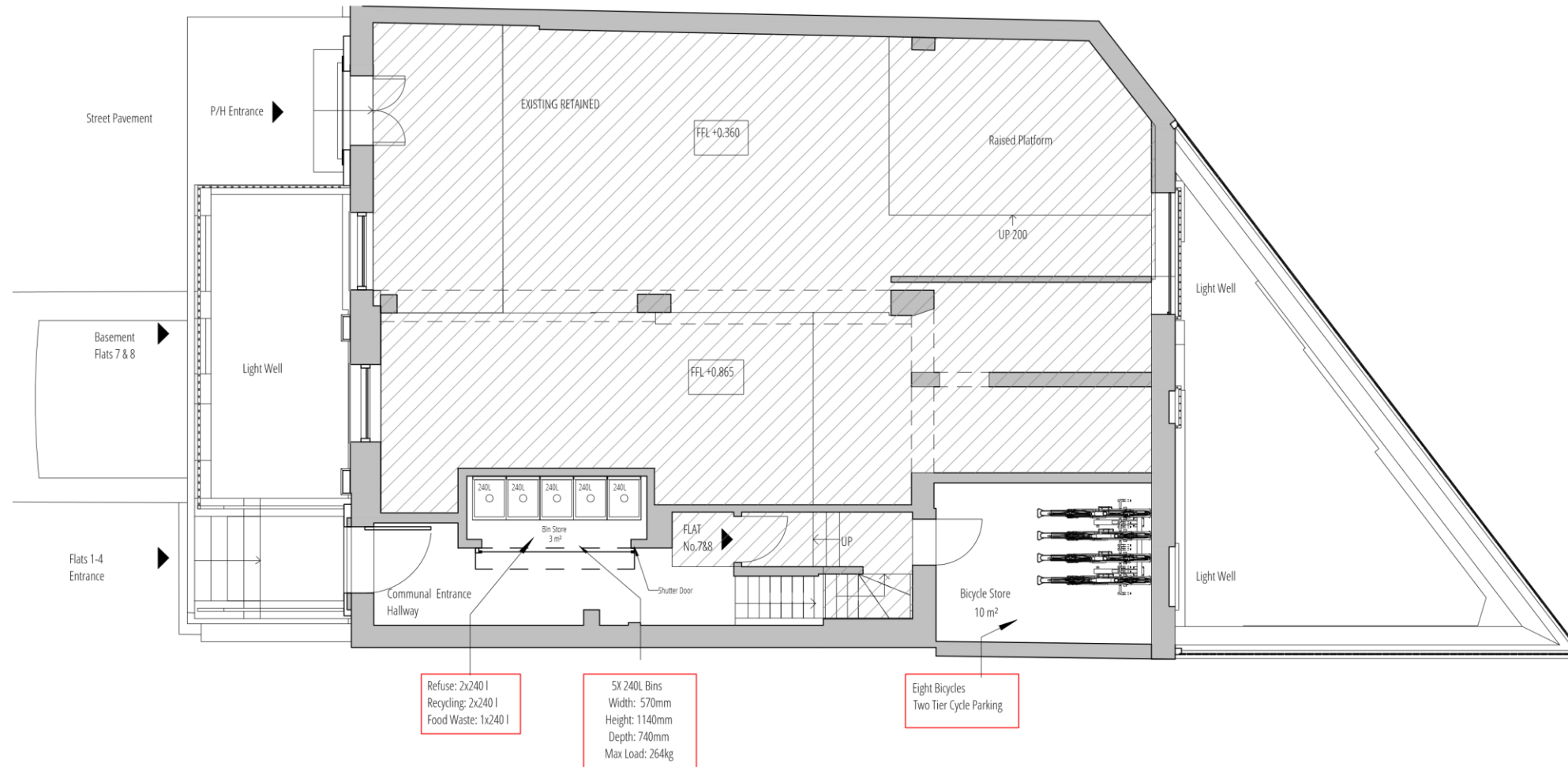
This Stair-Climber sack truck is foldable and will be store in the waste storage.

All residential waste collection will be undertaken by the London Borough of Camden (LBC) with weekly collections for each of the waste streams. LBC refuse vehicles will be able to access the site along Hurdwick Place.



Appendix 1.0

Waste Storage Plan



Refuse: 2x240 l
 Recycling: 2x240 l
 Food Waste: 1x240 l

Six 240L Bins
 Width: 570mm
 Height: 1140mm
 Depth: 740mm
 Max Load: 264kg

Eight Bicycles
 Two Tier Cycle Parking

1 Proposed Ground Floor Plan
 1 : 100

NOTES:
 1. THIS DRAWING IS COPYRIGHT AND MUST NOT BE RE-PRODUCED IN WHOLE OR IN PART WITHOUT WRITTEN PERMISSION OF GAA DESIGN.
 2. THIS DRAWING REPRESENTS DESIGN INTENT AND CONCEPT ONLY. HENCE IT CAN BE SCALED FOR PLANNING PURPOSES ONLY.
 3. THIS DOCUMENT AND ALL ASSOCIATED DOCUMENTS ARE PREPARED FOR SPECIFIC SITE AND EVENT, AND INCORPORATE CALCULATIONS AND MEASUREMENTS AVAILABLE FROM THE CLIENT AT THE TIME OF DRAFTING.
 4. THE RECIPIENT AGREES TO PROTECT THE CONTENTS FROM DISTRIBUTION AND DISSEMINATION EXCEPT AS REQUIRED FOR THE SPECIFIC EVENT NAMED, WITHOUT THE WRITTEN PERMISSION OF THE DESIGNER.
 5. USE OF THIS DESIGN IS GRANTED TO THE CLIENT FOR THE SPECIFIC AND NAMED EVENT ONLY.
 COPYRIGHT © 2019

REV	DATE	DESCRIPTION	APPR



PROJECT NAME
 1 Hurdwick Place, Camden, NW1 2J
 DRAWING TITLE
 Waste Management Plan
 PROJECT NUMBER
 21005
 SCALE
 1:100
 PURPOSE
 For Stage Approval

DOCUMENT NUMBER
 21005-GAA-ZZ-GF-DR-T-2007
 DATE
 02/06/21
 DRAWN
 RP
 CHECK
 CS
 STATUS
 S4
 P02
 REVISED
 SB
 APPROVED
 SB



