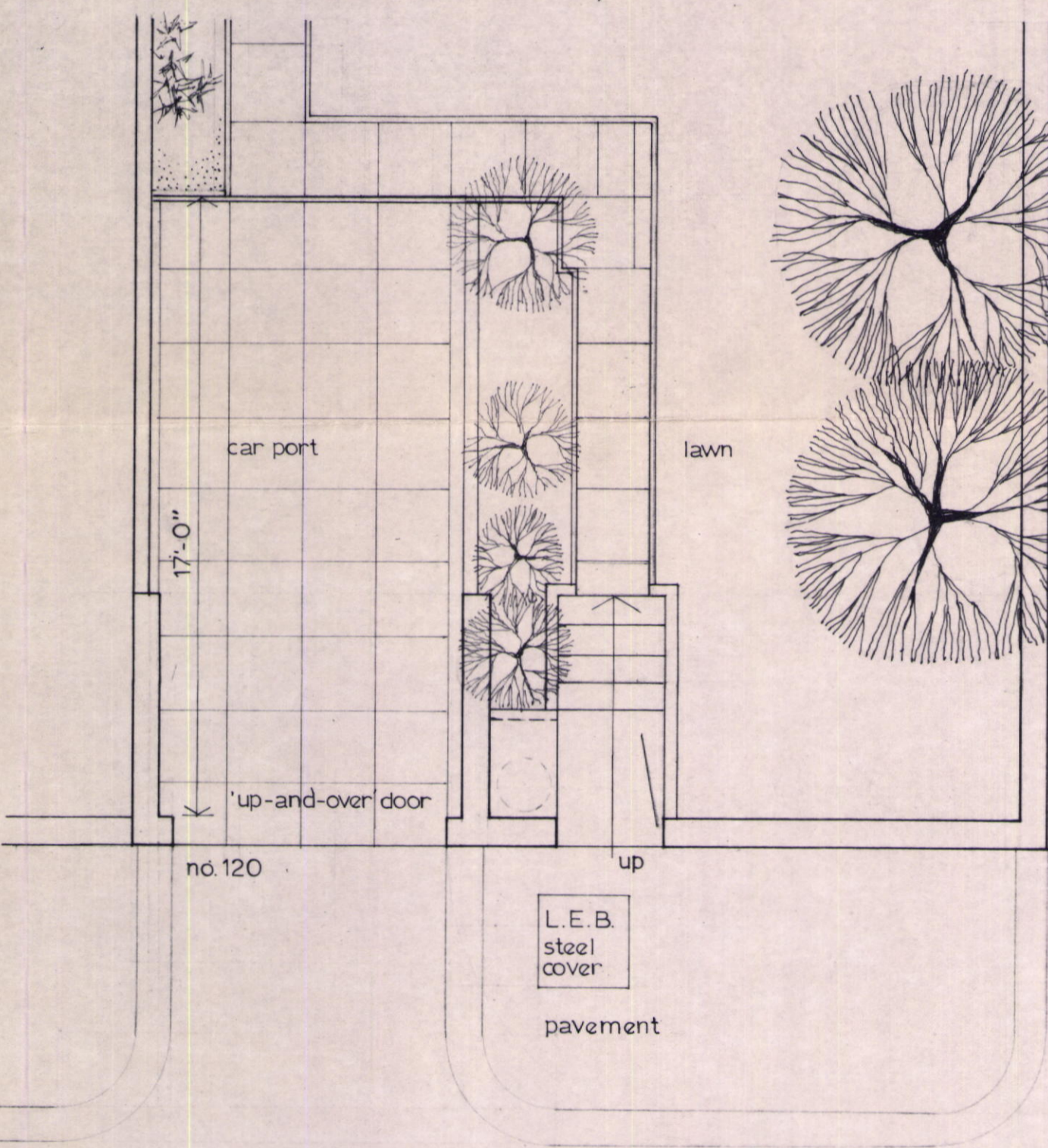
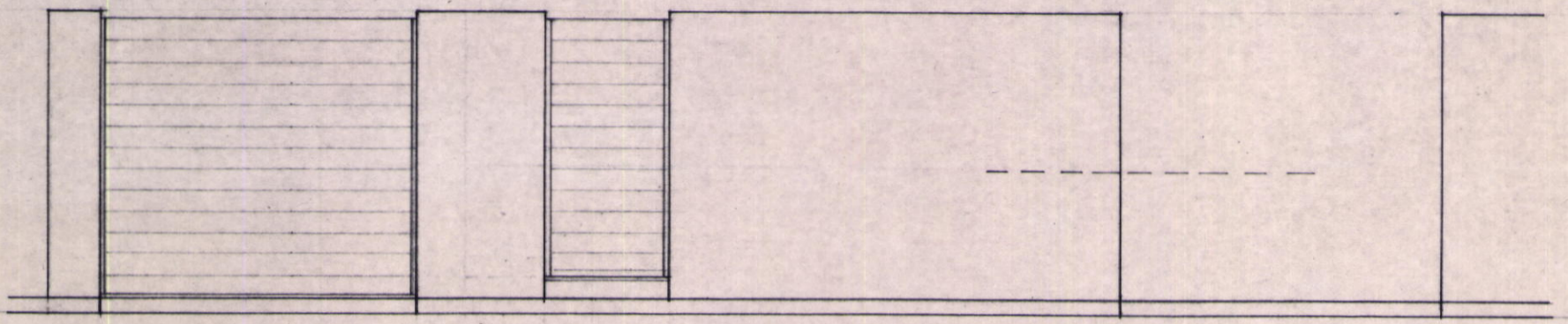


GTP/Fill/21/9/9065

PROPOSED CROSS-OVER TO 120 HIGHGATE RD. NW5
PLAN & ELEVATION TO ROAD

date NOV. 69
scale 4'-0" to 1"
no. 106 A 03



walled garden with existing boundary wall allround height to top of wall from pavement level 6'-9"
total depth of garden 53'-6"
width of clear opening for cross-over 8'-0"
existing trees will be retained

no. 120

up

no. 121 with existing cross-over
118

L.E.B. steel cover

pavement

HIGHGATE ROAD

LONDON BOROUGH OF CAMDEN
PLANS APPROVED
DISAPPROVED
- 4 AUG 1970
ON BEHALF OF THE COUNCIL