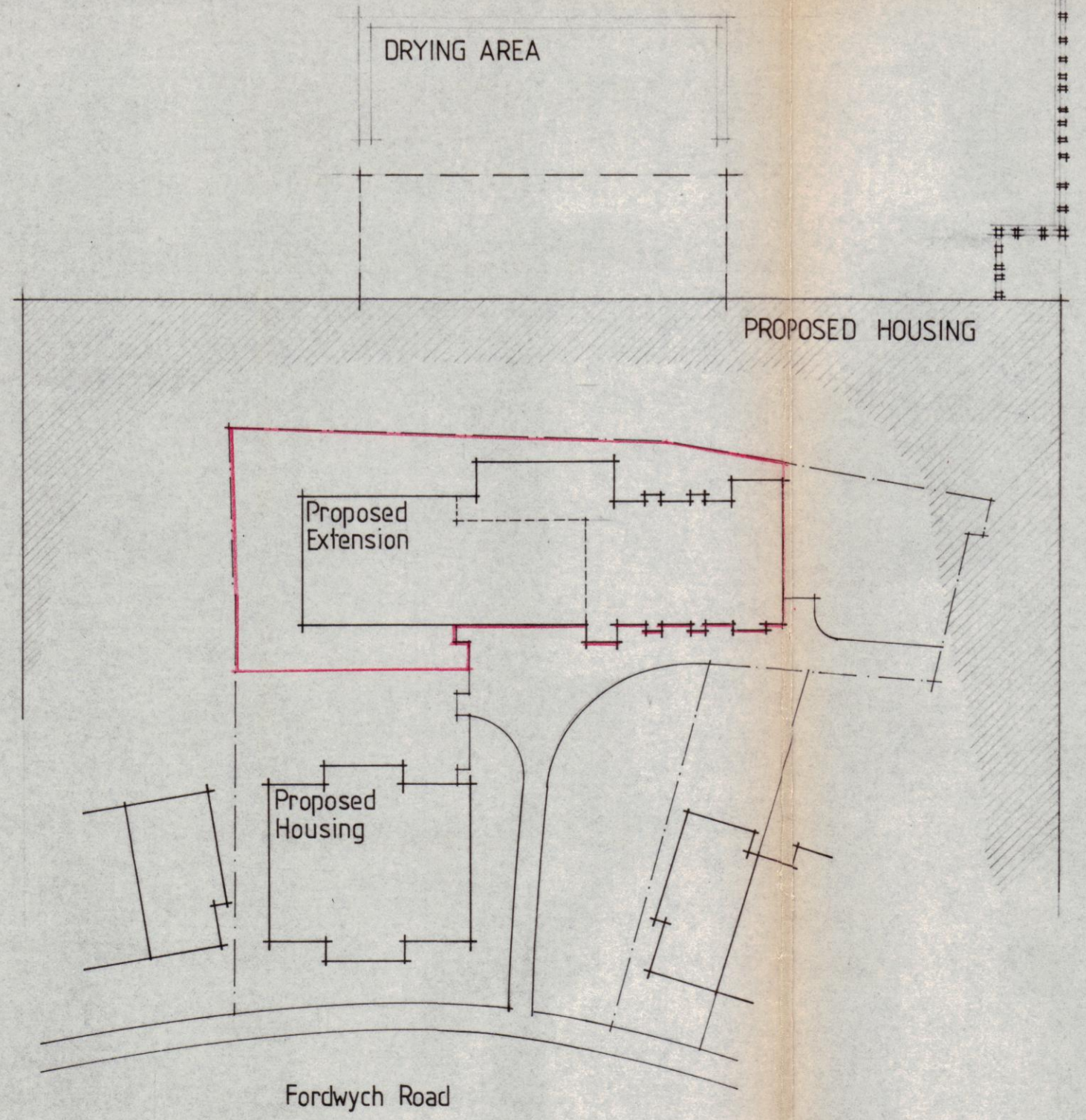
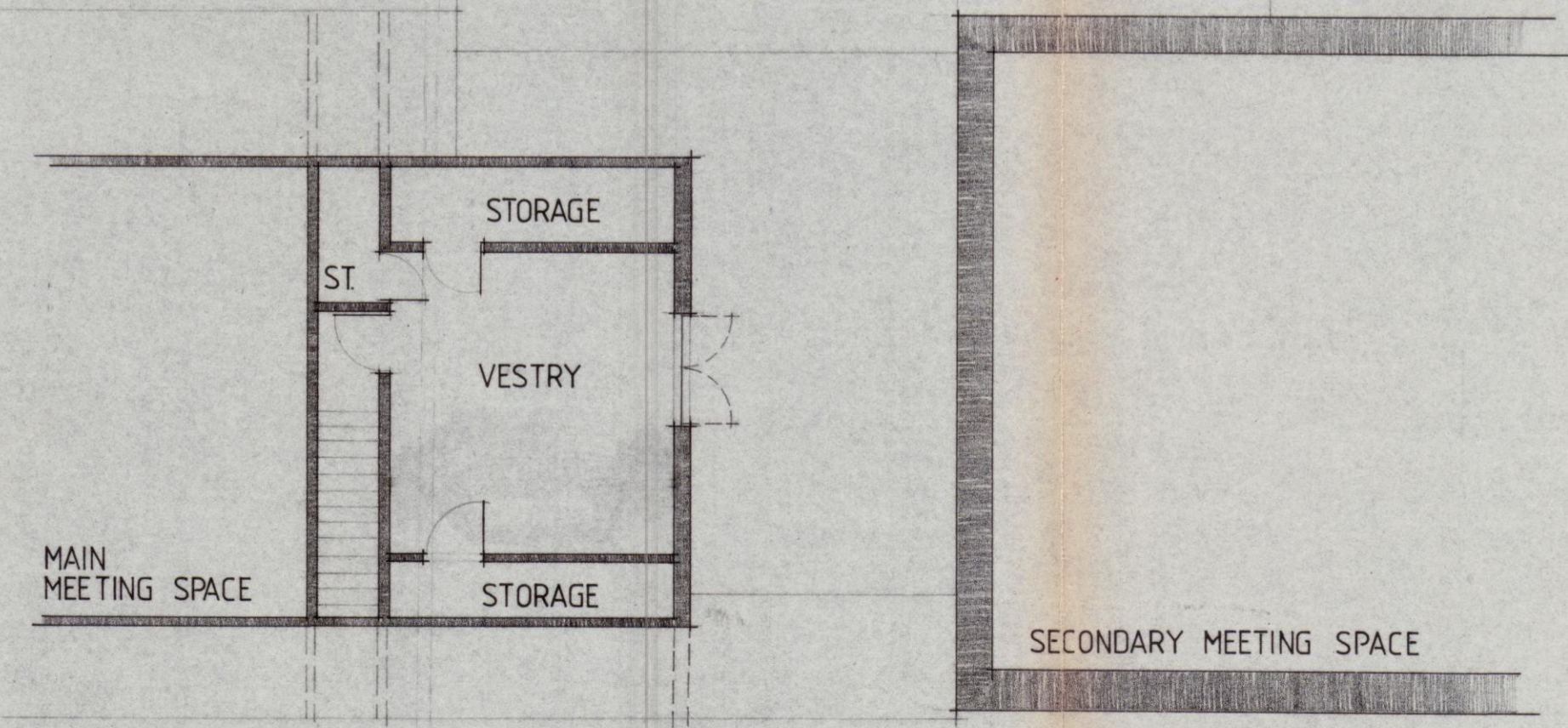


GROUND FLOOR

PROPOSED SITE BOUNDARY



LOCATION PLAN
1:500



UPPER FLOOR

LONDON BOROUGH OF CAMDEN
TOWN AND COUNTRY PLANNING ACTS
6 APR 1982
PLANS APPROVED
ON BEHALF OF THE COUNCIL

CTP/93/2/20/33757

ST CUTHBERTS CHURCH

PLANS 1:100

Raymond Hall 636 (1) 5
16 Belmont Hill London SE13 5BD Telephone 01 318 4384 15-10-8