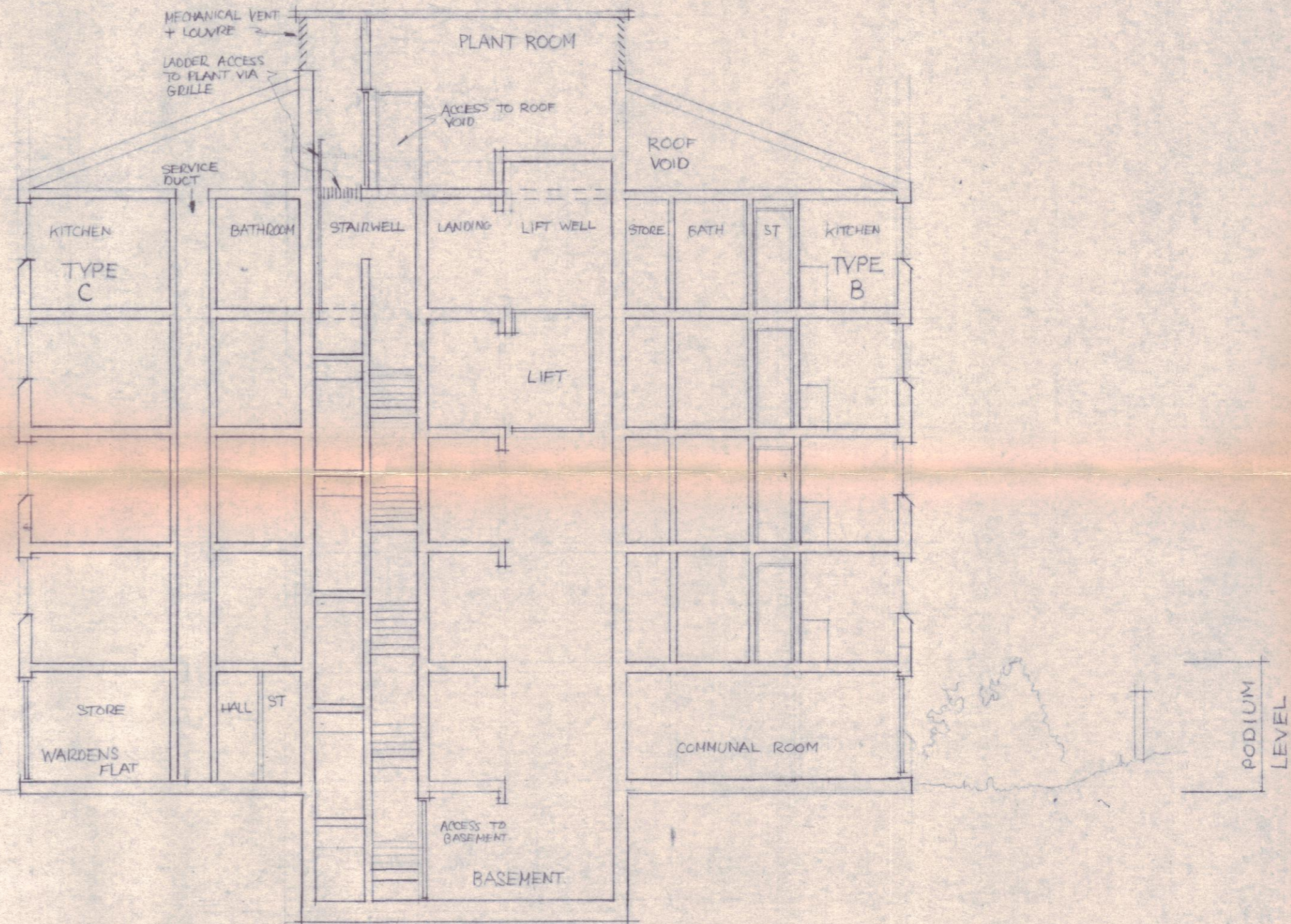


PLANT ROOM



SECTION B-B

CTP/S3/2/20/36274.

A	PODIUM LEVEL AMENDED	13 OCT 81
---	----------------------	-----------

ST CUTHBERTS HOUSING  
Category 2

Plant Room Plan + Section B-B 1:100

**TRUE COPY**  
LONDON BOROUGH OF CAMDEN  
TOWN AND COUNTRY PLANNING ACTS  
14 JUL 1983  
PLANS APPROVED  
~~NOT APPROVED~~  
ON BEHALF OF THE COUNCIL

**Raymond Hall** 886(2) 33A  
AA Dip (Arch) AA Dip (Planning) Architect RIBA  
16 Belmont Hill London SE13 5BD Telephone 01 318 4384  
8-10-81