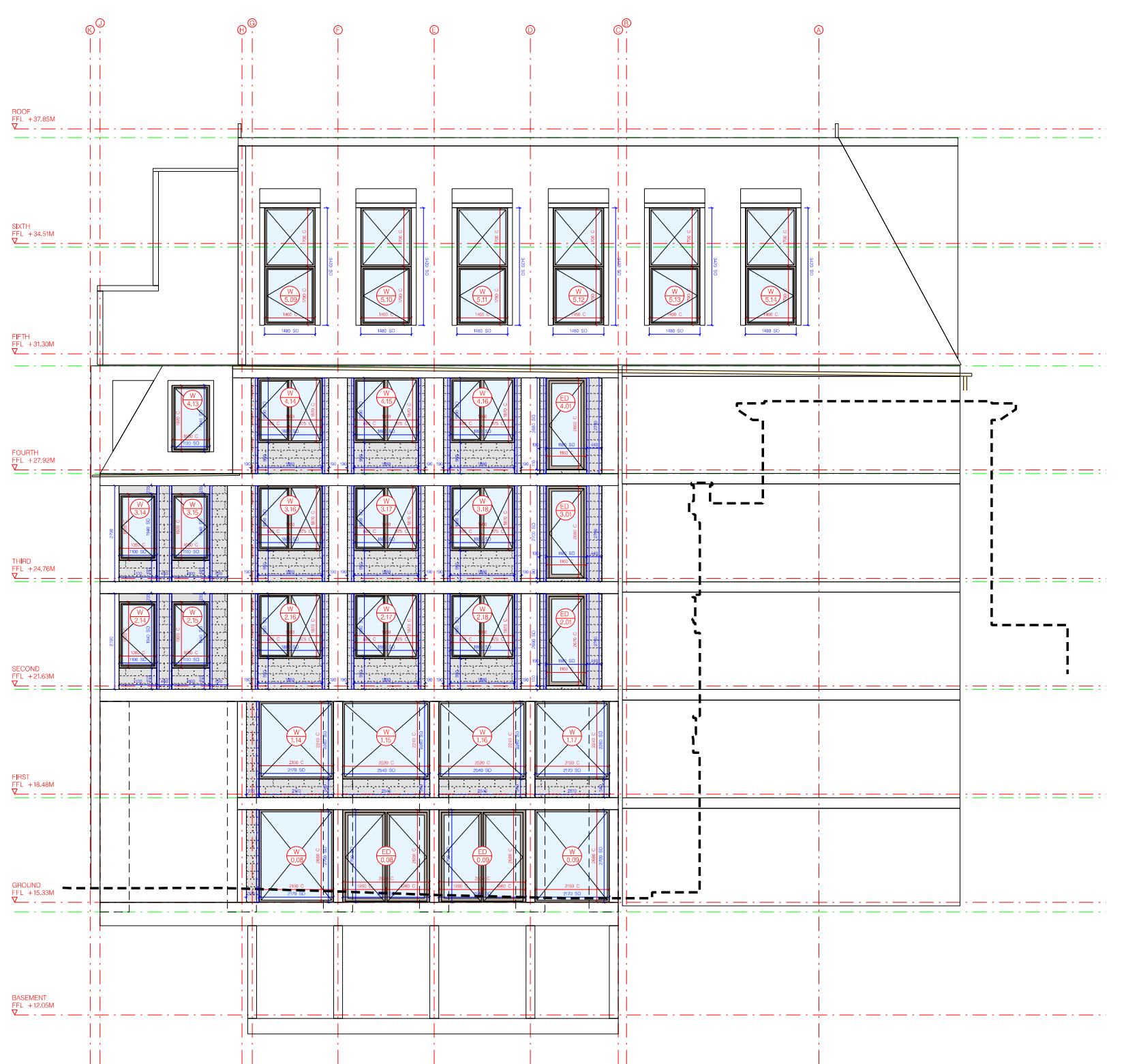
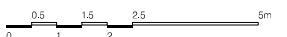


① WEST ELEVATION - WINDOWS AND DOORS



② SOUTH ELEVATION - WINDOWS AND DOORS



KEY	
□	WINDOW
□	BLANKING PANEL
□	DOOR
□	BLOCKWORK INFILL
□	LOUVRE
□	GUTTERDOWNPIPE
□	WIND POST
C	COMPONENT SIZE
SO	STRUCTURAL OPENING SIZE

NOTES	
1.	ALL STRUCTURAL OPENINGS ON EXISTING BUILDING TO BE CONFIRMED AND MEASURED ON SITE BY SUB-CONTRACTOR.
2.	STRUCTURAL ENGINEER TO PROVIDE DETAILS AND LOCATIONS FOR WIND POSTS ON BLOCKWORK INFILL WALLS.
3.	UNLESS OTHERWISE SPECIFIED COMPONENT SIZES ARE BASED OFF 10MM TOLERANCE TO ALL SIDES BETWEEN THE FRAME AND STRUCTURAL OPENING. SUB-CONTRACTOR TO ADVISE IF A GREATER TOLERANCE IS REQUIRED.

REVISION	PURPOSE	DATE	NOTES	CLIENT	PROJECT TITLE	DRAWING TITLE	PURPOSE	SCALE A1	SCALE A3	DB	CB	DATE	
S5-C1	ISSUED FOR CONSTRUCTION COORDINATION	26.02.21	1. Contractors are not to directly scale off this drawing. Dimensions should be obtained from the Engineer or Architect, site checked and any discrepancy between drawings reported. 2. The design and these drawings are the sole copyright of Amin Taha Architects, 15 Clerkenwell Close, London EC1H 0AA. T. 020 7253 8444 F. 020 7253 9555.	GROUPWORK	SEAFORTH LAND HOLDINGS LTD	20 - 23 GREVILLE STREET, LONDON, EC1N 8SS	WEST AND SOUTH ELEVATION - WINDOWS AND DOORS	S5-C	1:75	1:150	AC	AT	MAR 21
							DRAWING NO.					REVISION	
							GS-GRW-XX-XX-DR-A-1161					C02	