

## Groupwork

### Technical Note

---

Project	Greville Street
Title	Planning Condition 3(C)
Ref.	248
Rev.	A
Date	10.06.21

---

## Introduction

---

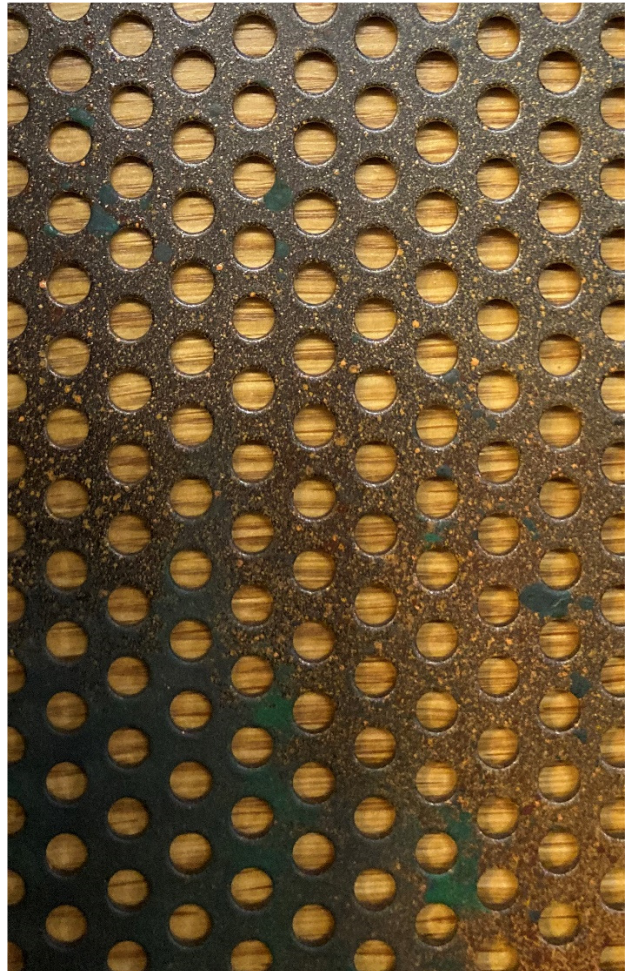
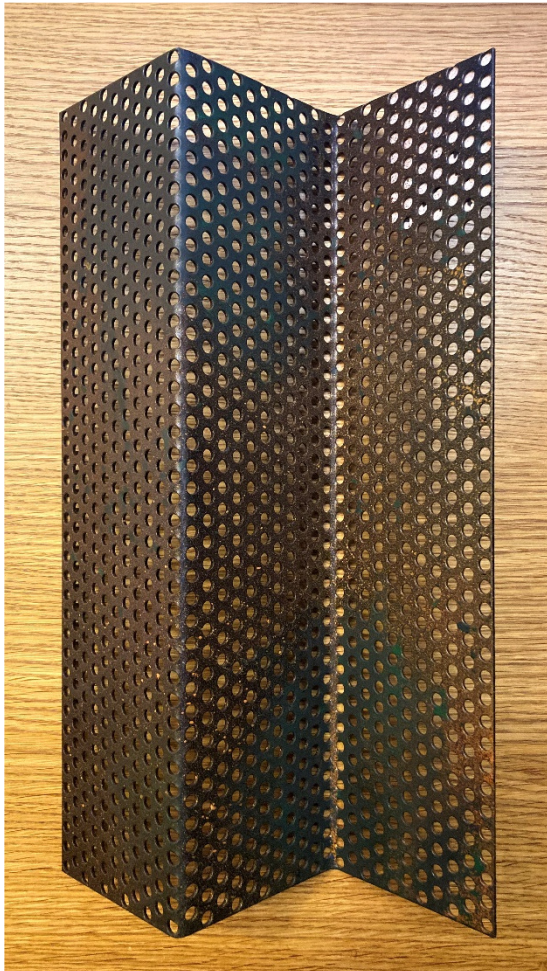
The purpose of this technical note is to outline information submitted as part of the discharge of condition 3(C) of application 2018/0910 – *“Samples and manufacturer's details of all new facing materials including glazing”*.

This technical note will list the full manufacturers details and images of each facing material, and is issued alongside marked up elevations that highlight where each material is present on the facades.

## Perforated Façade Panels

---

- **Material** – Perforated aluminium
- **Perforated aluminium manufacturer** – Cadisch precision meshes
- **Thickness** – 2mm thick perforated aluminium sheet
- **Hole size and pitch** – Staggered round perforation with 6mm diameter holes and 10mm pitch
- **Finish** – Colour polyester powder coating with custom pre-patinated finish
- **Finish details** – IGP polyester powder coating 30% gloss RAL 8022 with custom pre-patinated finish
- **Façade fabricator** – Dmitro Facades Limited



## Breather Membrane

---

- **Manufacturer / product details** – Illbruck ME010 vapour permeable breather membrane
- **Material** – Polyester
- **Finish** – Black



## Façade Sub-Frame and Bracketry

---

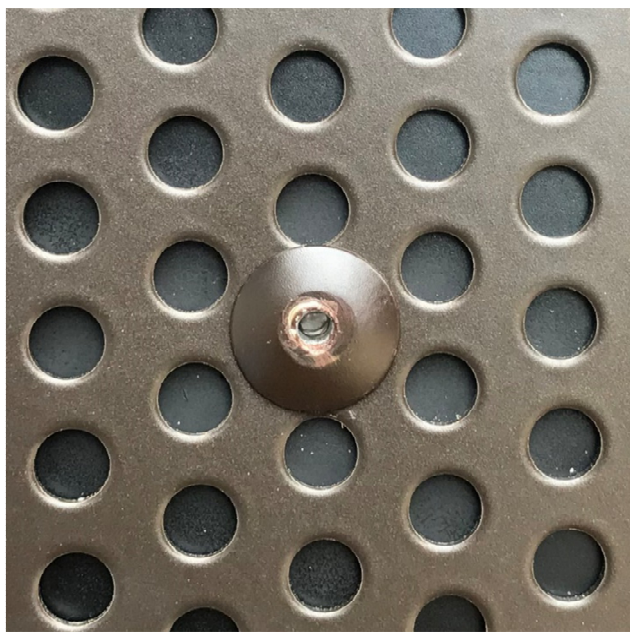
- **Manufacturer / product details** – A combination of NVELOPE NV1 (T profile) and NV2F (box section) vertical rainscreen cladding systems
- **Material** – Extruded aluminium profiles
- **Finish** – Polyester powder coating
- **Finish details** – Polyester powder coating RAL 9005 black



## Façade Panel Rivets

---

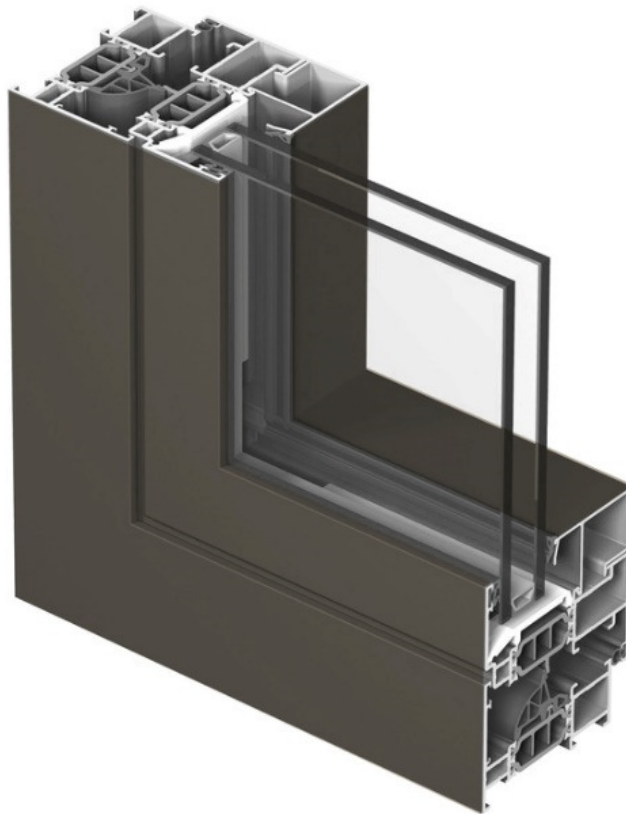
- **Manufacturer / product details** – TBC by Dmitro Facades
- **Material** – Aluminium
- **Finish** – Colour polyester powder coating with custom pre-patinated finish
- **Finish details** – IGP polyester powder coating 30% gloss RAL 8022 with custom pre-patinated finish



## Window Units

---

- **Window manufacturer / product details** – Raynaers CS77 window system in ‘functional’ frame style
- **Window frame material** – Extruded aluminium profiles
- **Frame / spandrel panel finish** – Custom colour polyester powder coating
- **Frame finish details** – TIGER Drylac Series 29 Architectural Application polyester powder coating – 029/65650
- **Glazing specification** – Double glazed 6mm panes



### Windowsills

---

- **Windowsill manufacturer / product details** – Raynaers to match CS77 window system
- **Windowsill material** – Extruded aluminium profile
- **Windowsill finish** – Custom colour polyester powder coating
- **Sill finish details** – TIGER Drylac Series 29 Architectural Application polyester powder coating – 029/65650

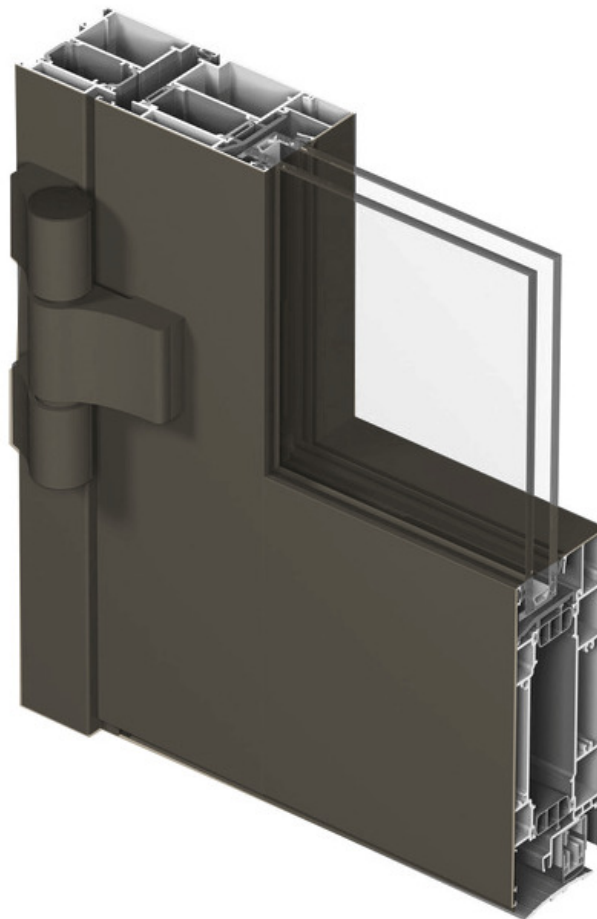




## Glazed External Door Units

---

- **Door manufacturer / product details** - Raynaers CS77 door system in 'functional' frame style
- **Door frame material** - Extruded aluminium profiles
- **Frame / spandrel panel finish** - Custom colour polyester powder coating
- **Frame finish details** - TIGER Drylac Series 29 Architectural Application polyester powder coating - 029/65650
- **Glazing specification** - Double glazed 6mm panes



### Steel Doors

---

- **Door manufacturer / product details** – Steeldor single steel door set
- **Door material** – 1.2mm galvanised steel sheet fixed to rockwool core
- **Door frame material** – 1.5mm galvanised steel
- **Door and frame Finish** – Colour polyester powder coating with custom pre-patinated finish
- **Door and frame finish details** – IGP polyester powder coating 30% gloss RAL 8022 with custom pre-patinated finish



### Substation Louvred Doors

---

- **Door manufacturer / product details** – Sunray doors
- **Door material** – Galvanised steel
- **Door frame material** – 100 x 50 x 3mm rectangular galvanised steel hollow section to head and jambs with 100 x 10mm flat threshold from galvanised steel
- **Door and frame Finish** – Colour polyester powder coating with custom pre-patinated finish
- **Door and frame finish details** – IGP polyester powder coating 30% gloss RAL 8022 with custom pre-patinated finish

No image available