

Groupwork

Technical Note

| | |
|---------|-----------------------|
| Project | Greville Street |
| Title | Planning Condition 3D |
| Ref. | 248 |
| Rev. | A |
| Date | 07.06.21 |

Introduction

The purpose of this technical note is to provide information to accompany the physical on-site sample panel, erected on the west elevation.

The sample panel has been taken from a section of the west elevation to include a window section, flat panels and folded panels. The sample panel shows façade fixings, substructure, insulation and breather membrane. It also shows the proposed window manufacturer and finish.



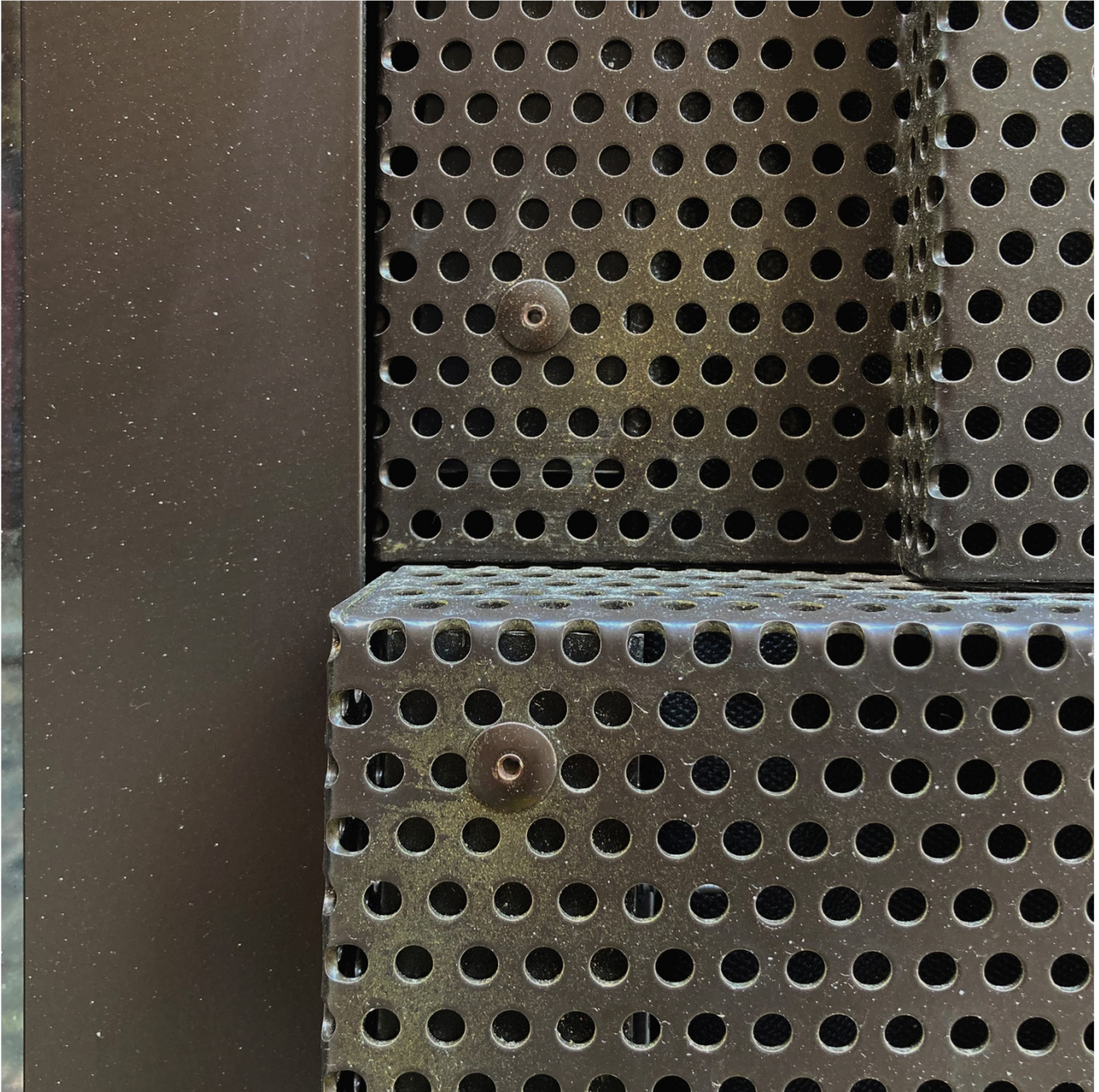
Location of sample panel from wider west façade elevation.

Sample Images

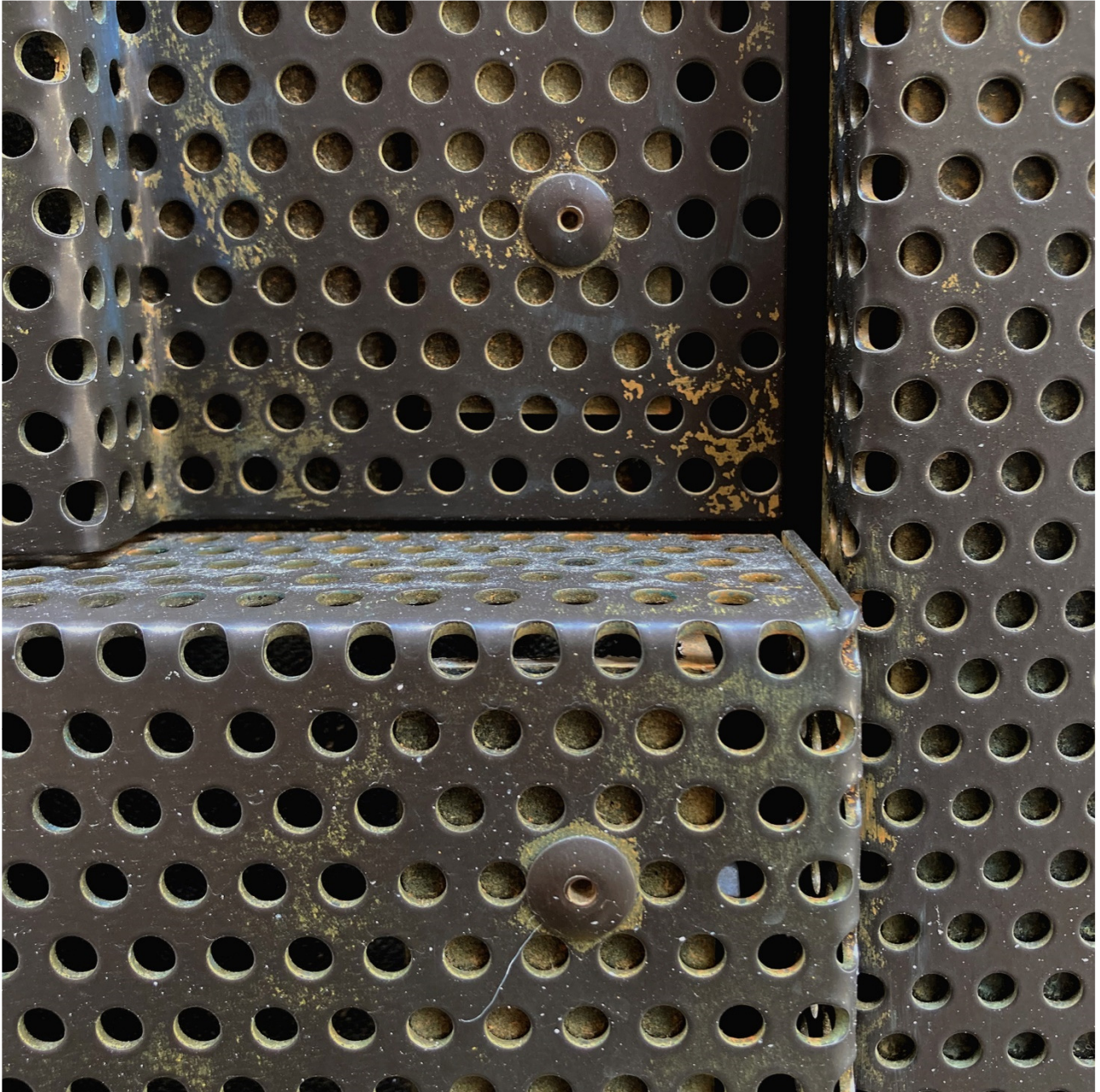
The following images show an on-site 1m2 façade sample panel with window and window sill section showing typical bending radius, fixings, panelisation, colour, pre-patination, breather membrane, insulation and sub-frame.



Front elevation



Fixing detail at façade panel and window



Fixing detail at façade panel