

- Do not scale from this drawing

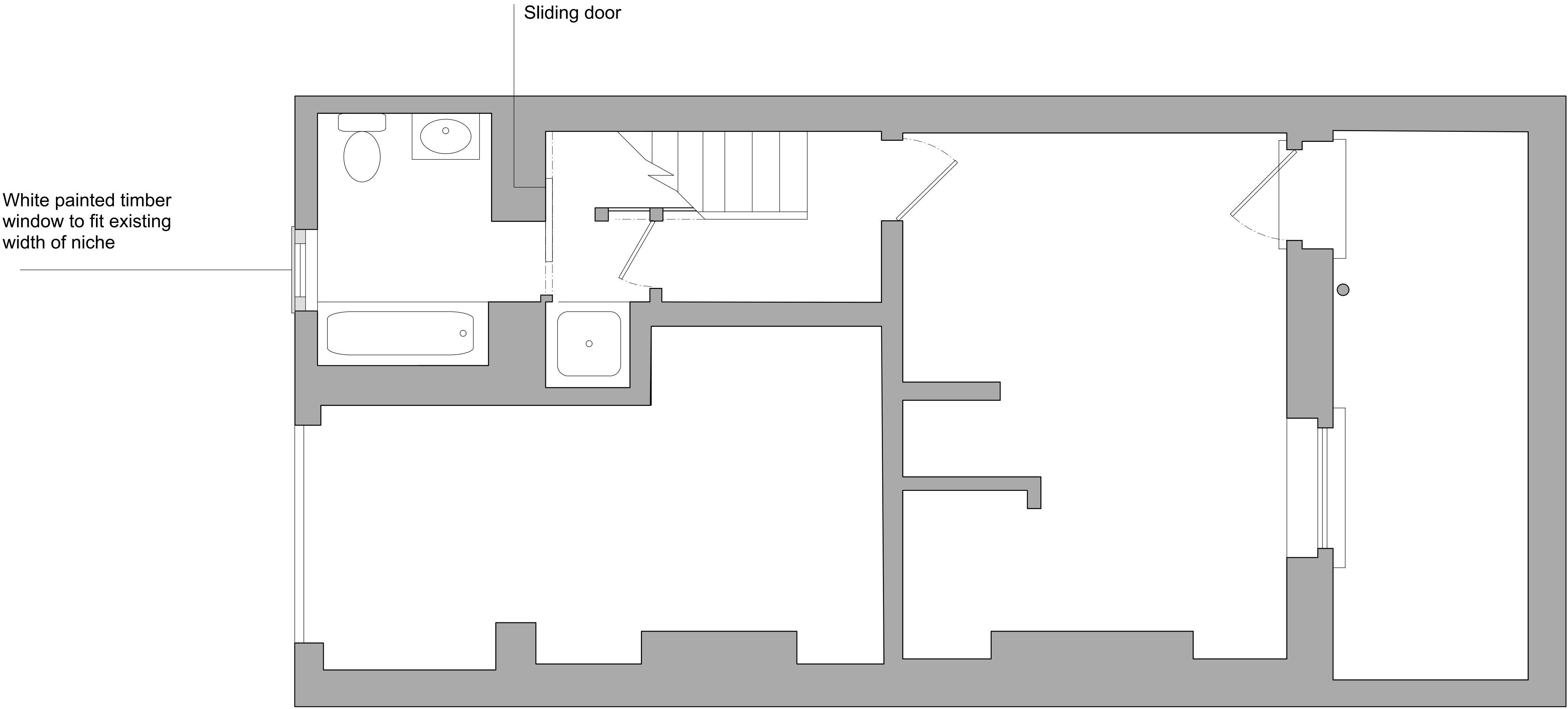
General Notes

- All dimensions to be verified on site
- To be read in conjunction with all relevant documents
- In the event of discrepancy notify the Architect immediately
- All steel structural elements to be finished with intumescent coating. 30 minutes fire resistance. For all structural elements and connection see SE drawings.
- This document is copyright of Hugh Cullum Architects Ltd

Issue Status

- SK Sketch	- T Tender	- P Permissions
- D Design	- E Existing Condition	- C Contract

rev note date (drawn by/checked by)



1 Proposed Lower Ground Floor
Scale: 1:25