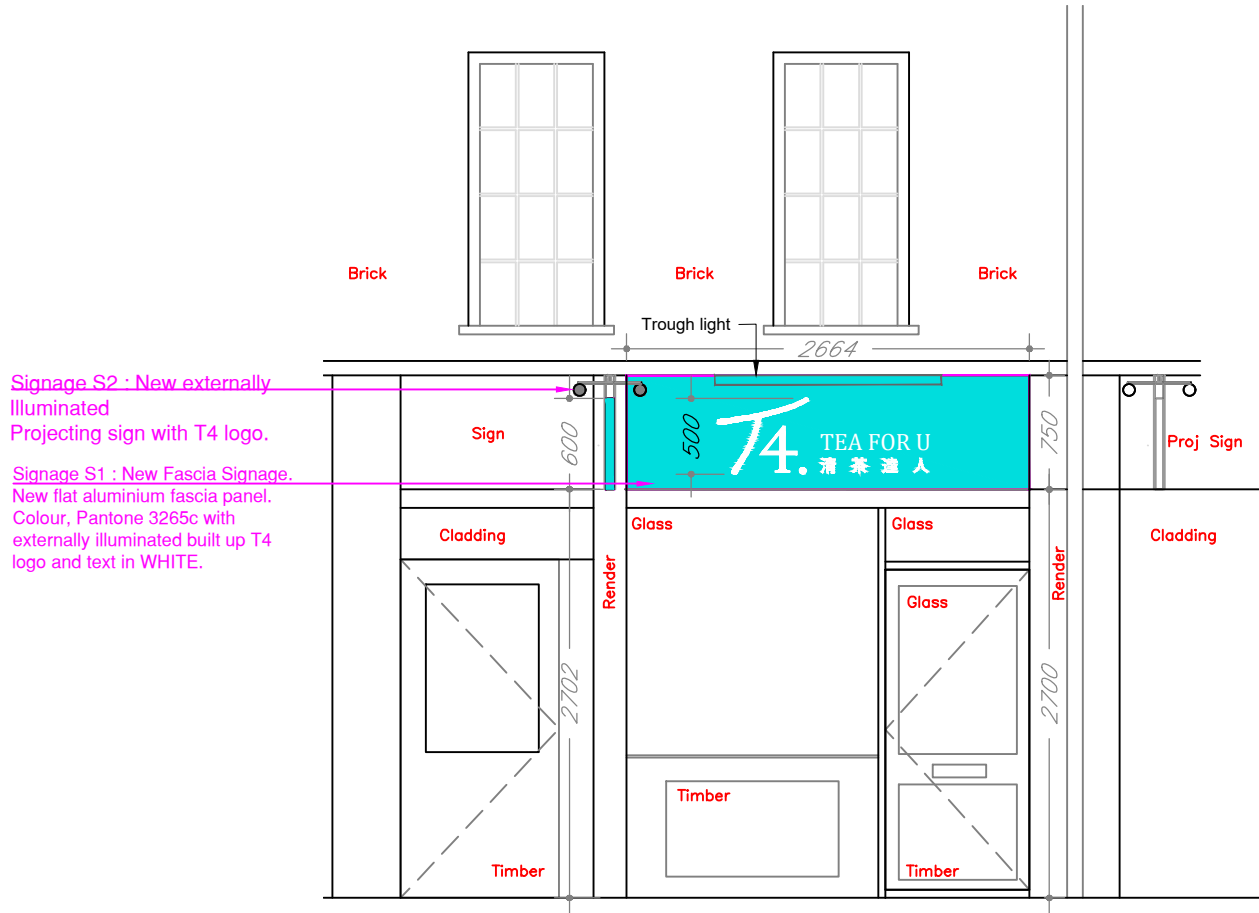


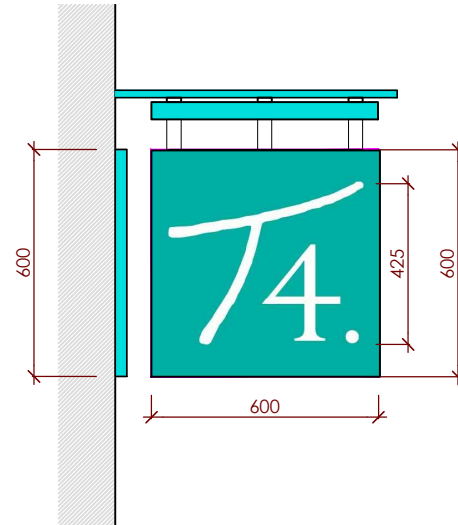
Signage S2 : New externally Illuminated Projecting sign with T4 logo.

Signage S1 : New Fascia Signage. New flat aluminium fascia panel. Colour, Pantone 3265c with externally illuminated built up T4 logo and text in WHITE.



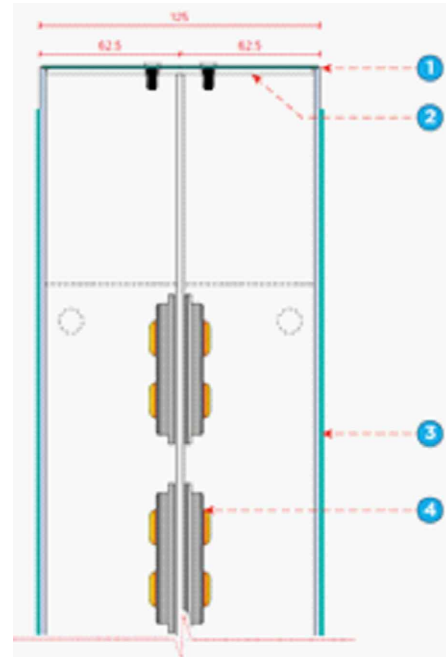
PROPOSED FRONT ELEVATION  
Scale 1:25 @A1 / 1:50@A3

- 1 5mm thick opal 1TL2 perspex with step rebate to rear for returns, with Pantone 3265 matt aluminium returns bonded to perspex faces.
- 2 3mm thick inner carcass.
- 3 2mm thick alu sprayed Pantone 3265 matt applied to face of perspex panel.
- 4 White faced alu housing white optilux 35 6500k led's not to exceed 200 c/m2
- 5 5mm thick alu fixing plate with 125mm projecting stand-offs.
- 6 2.5mm thick alu' pans fixed to alu' box section framework sprayed Pantone 3265matt, arm fixed to external wall.

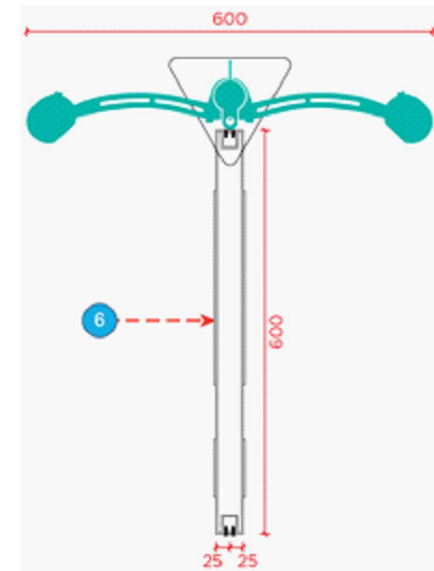


S2 PROJECTING SIGN  
EXTERNALLY ILLUMINATED PROJECTING SIGN  
Scale 1:10@A1 / 1:20@A3

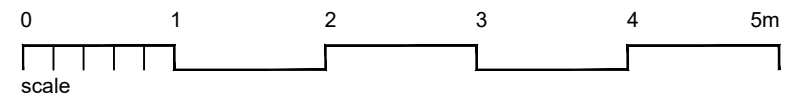
- Double sided projecting sign.
- Project sign case constructed from folded aluminium panels 50mm wide extruded aluminium framework.
- Polyester powder coated PPC finish in Pantone 3265C
- White Acrylic T4 logo and dot to each side.
- Hanging bracket all finished in Pantone 3265C
- External illuminated slimline troughlight with LED lighting. Maximum luminance 200 candelas/m².
- All cabling and Fixing details to be concealed.
- All finishes to be sealed and weathered.



Section through (NTS)




Section through (NTS)



DELTA BRAVO GROUP LTD NOTES:  
Proposed plans & elevations have been prepared on the basis of drawings: 19.07.1634 produced by Sterlingtemple and provided by T4 to Delta Bravo Ltd.  
Delta Bravo Ltd accept no liability for the accuracy or completeness of the original drawings. "As-built" unit must be checked against the drawings prior to any works.  
Delta Bravo Group Ltd copyright. This drawing shall not be reproduced without express written permission from DBG.  
Delta Bravo Group accept no responsibility or liability for drawing alterations carried out by others and have not checked such alterations.  
This drawing shall not be scaled to ascertain any dimensions.  
Asbestos survey required prior to commencement.  
Contractor/Structural Engineer to confirm load bearing walls.

BUILDING IN CONSERVATION AREA

|   |                 |                  |
|---|-----------------|------------------|
| 0 1 2 3 4 5m<br>scale   |                 |                  |
| REV   | AMENDMENT       | DATE             |
| NOTES:<br>CONTRACTORS MUST VERIFY ALL DIMENSIONS ON SITE BEFORE COMMENCEMENT OF ANY WORK OR PREPARING MANUFACTURING DRAWINGS<br>ANY DISCREPANCIES ON THIS DRAWING ARE TO BE NOTIFIED TO THE DESIGNER IMMEDIATELY                                  |                 |                  |
| <br><b>DELTABRAVO LIMITED</b><br>DESIGN • CONSTRUCTION • SHOPFITTING • PROJECT MANAGEMENT<br>Academy House<br>London Road<br>Comberley<br>Surrey<br>GU15 3HL |                 |                  |
| CLIENT<br>T4  |                 |                  |
| PROJECT<br>13 Warren Street,<br>London, W1T 5LH   |                 |                  |
| TITLE<br>PROPOSED PROJECTING SIGN   |                 |                  |
| SCALE @ A1<br>1:25 / 1:10   | DRAWN BY<br>M W | DATE<br>14.06.21 |
| DRAWING No<br>DB515-SG02  |                 | REVISION         |