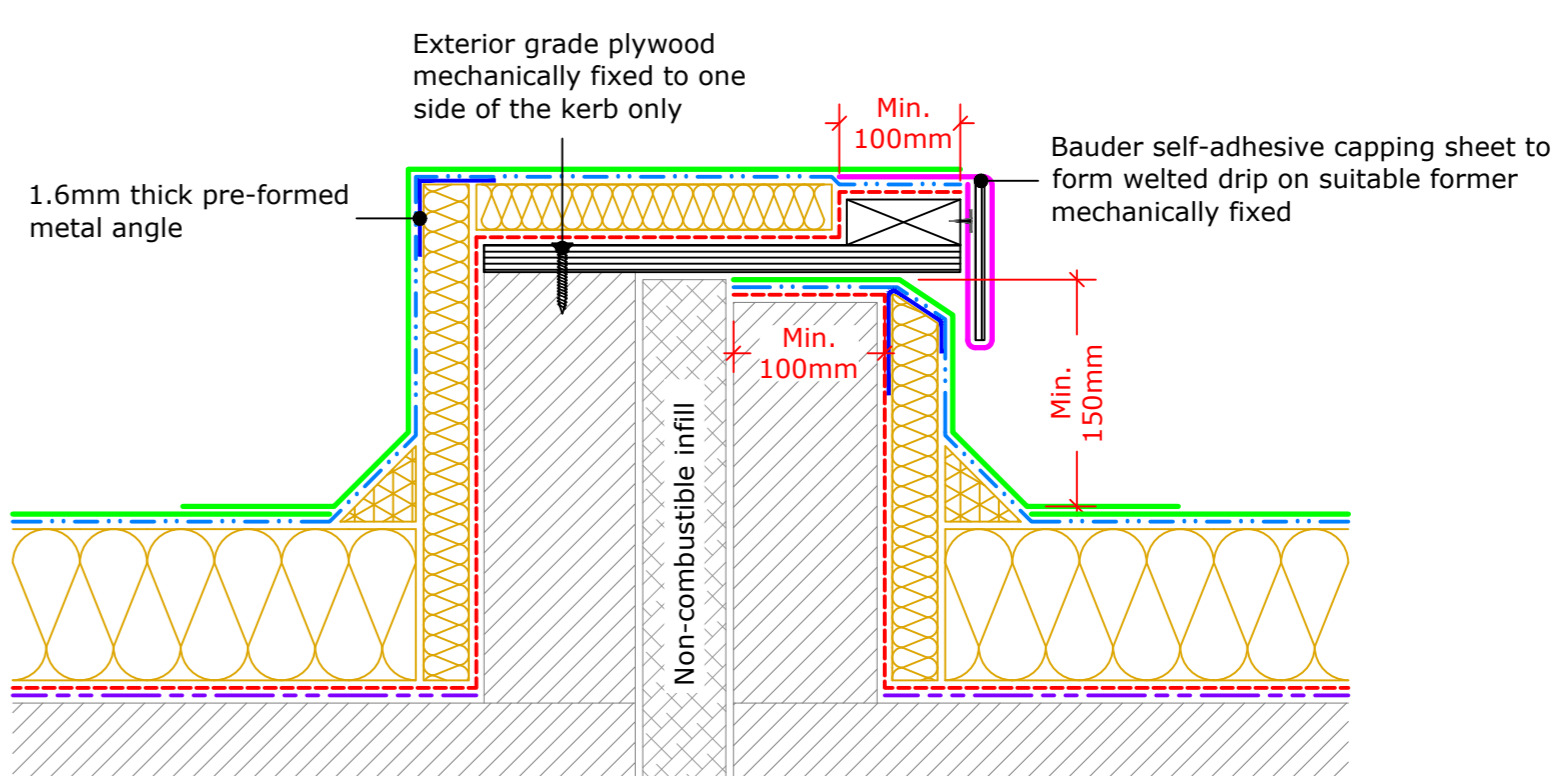
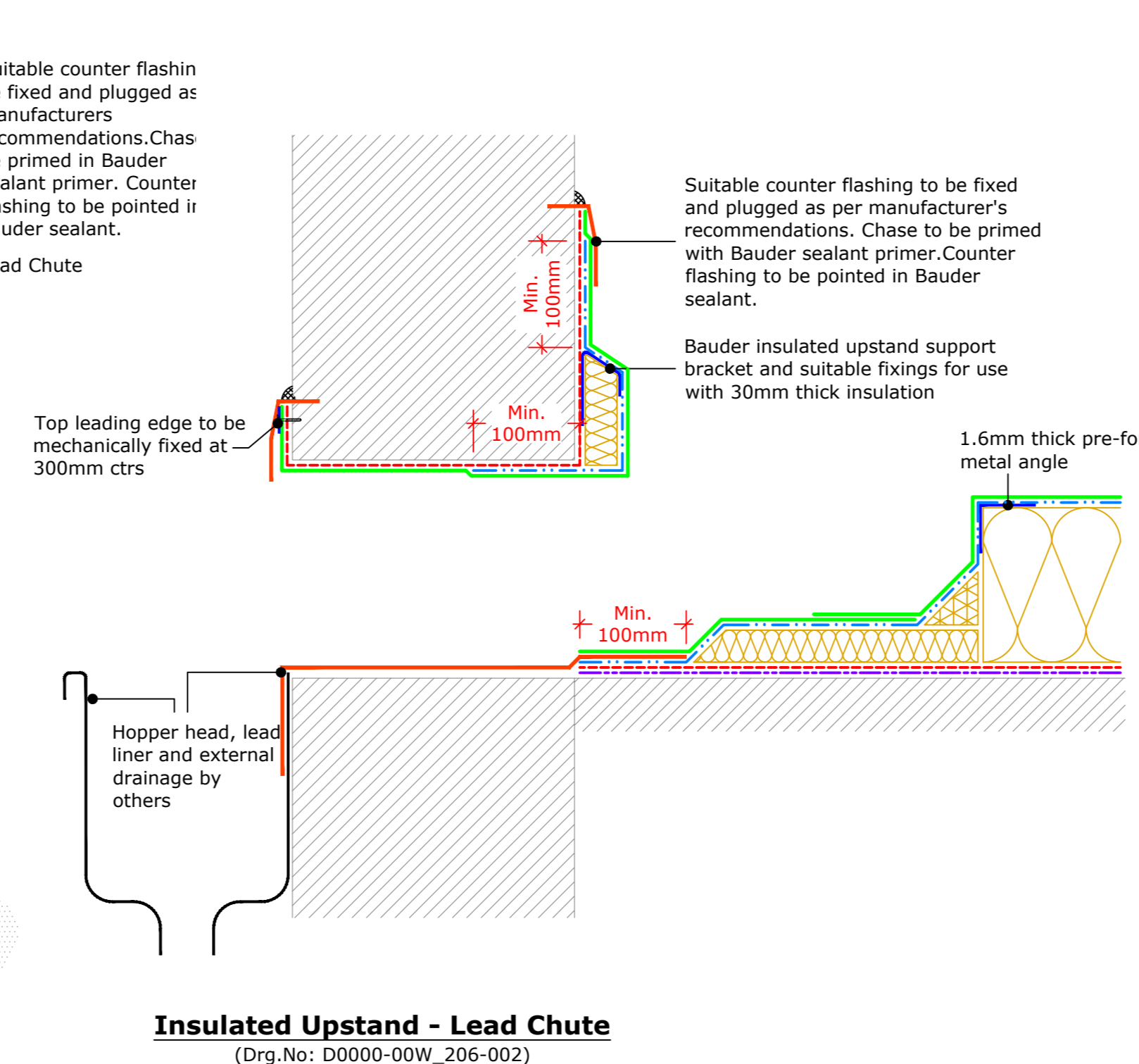
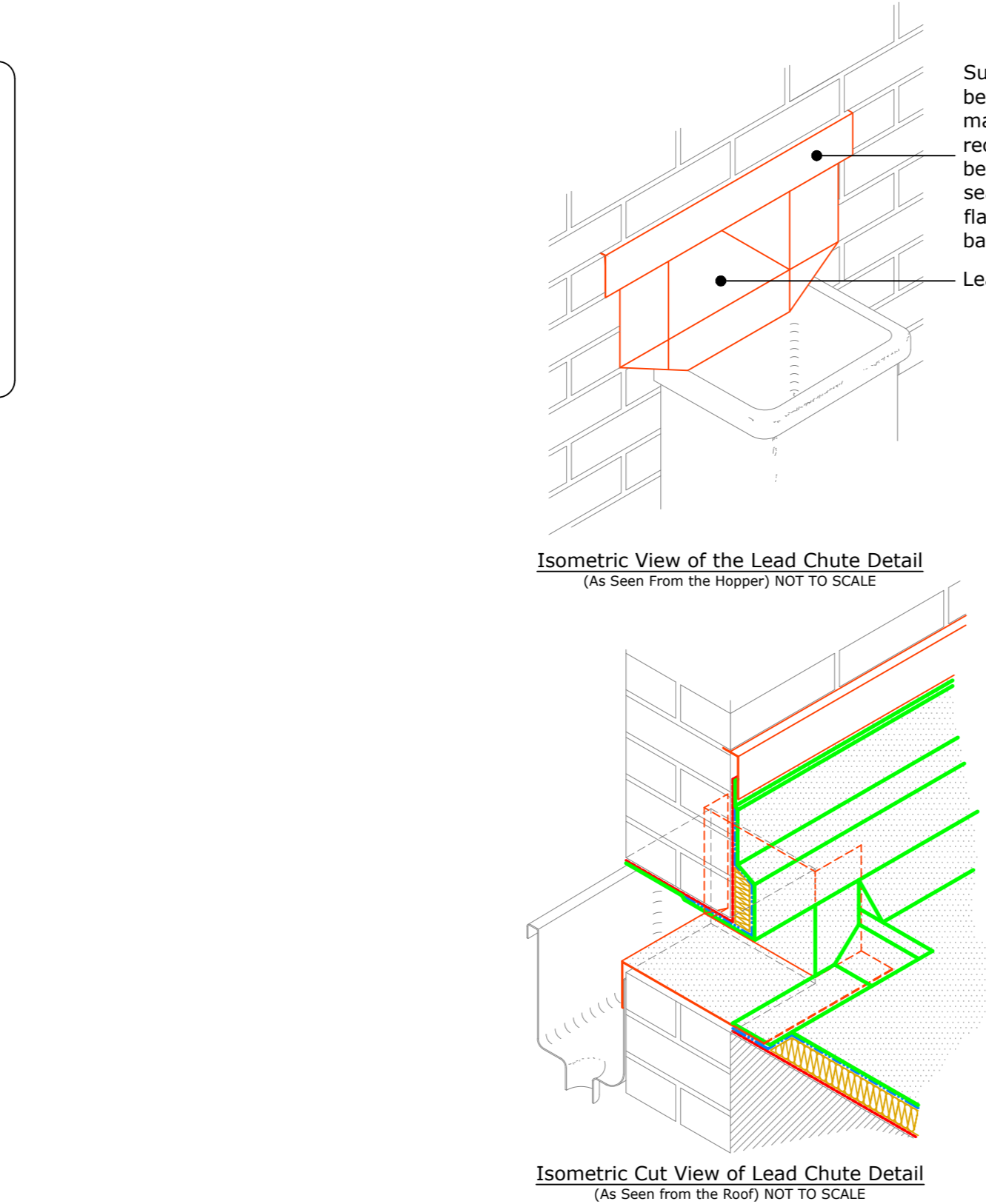
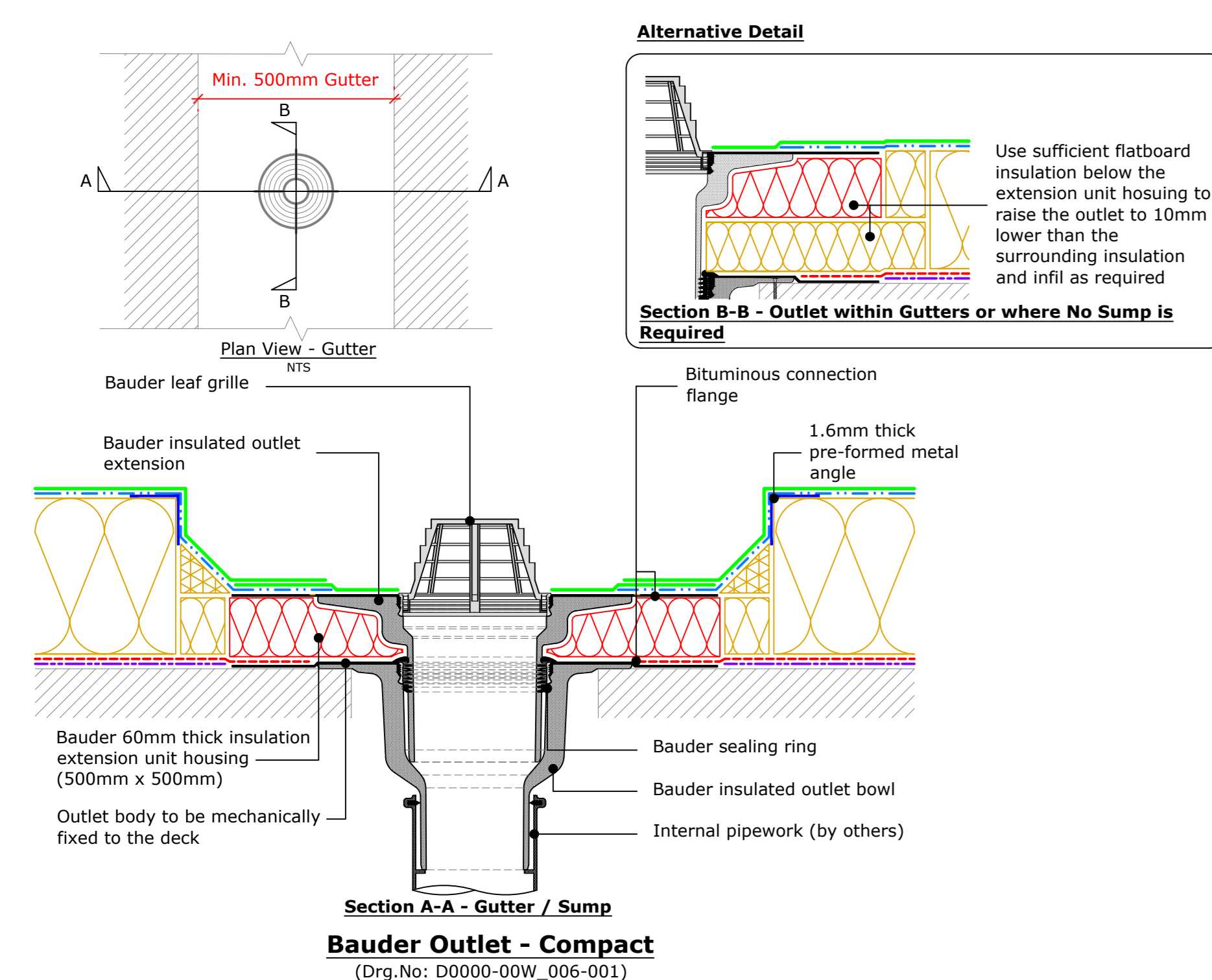
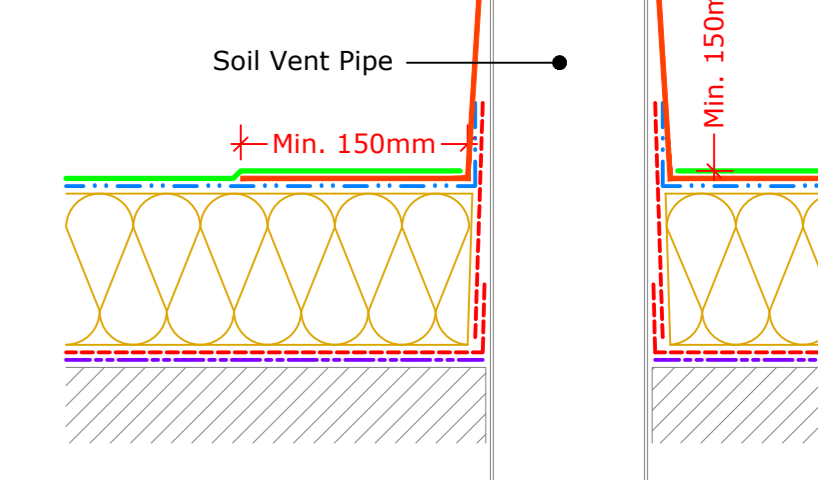
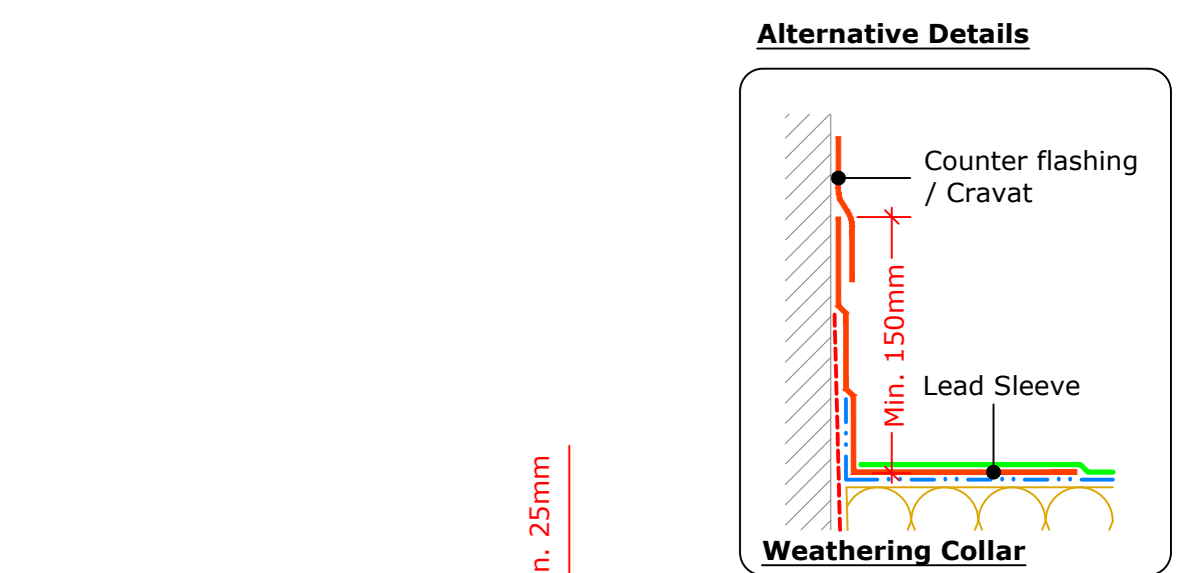
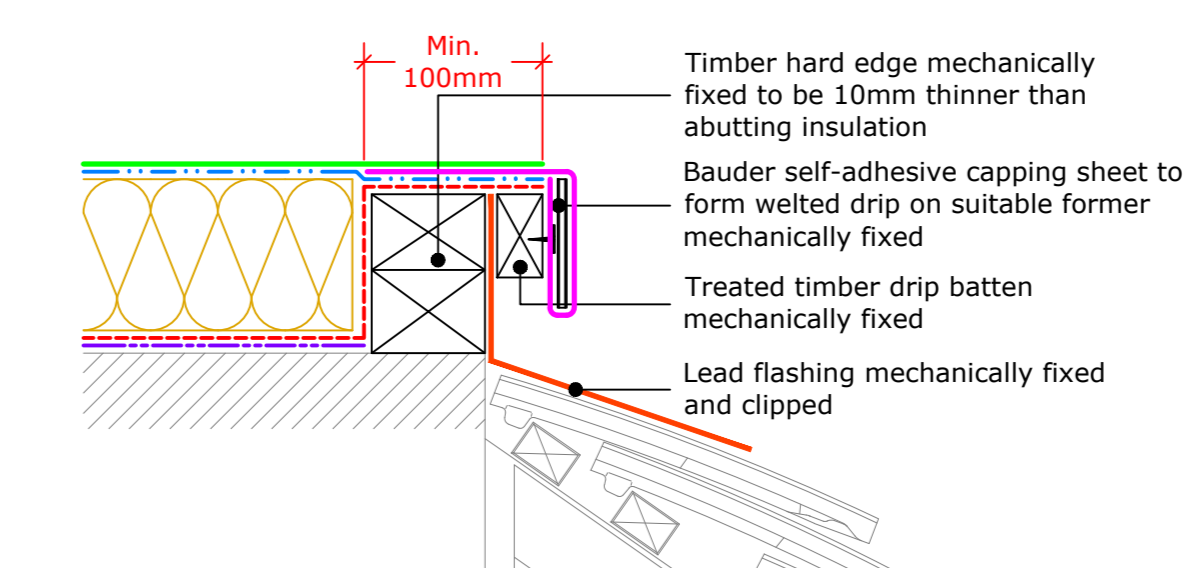
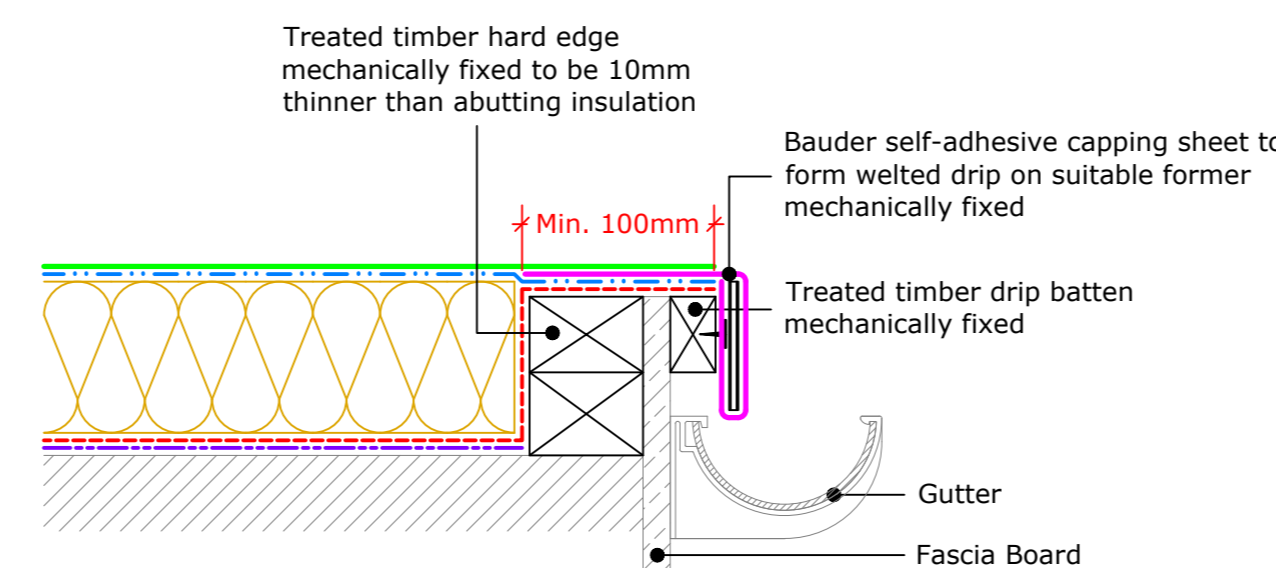
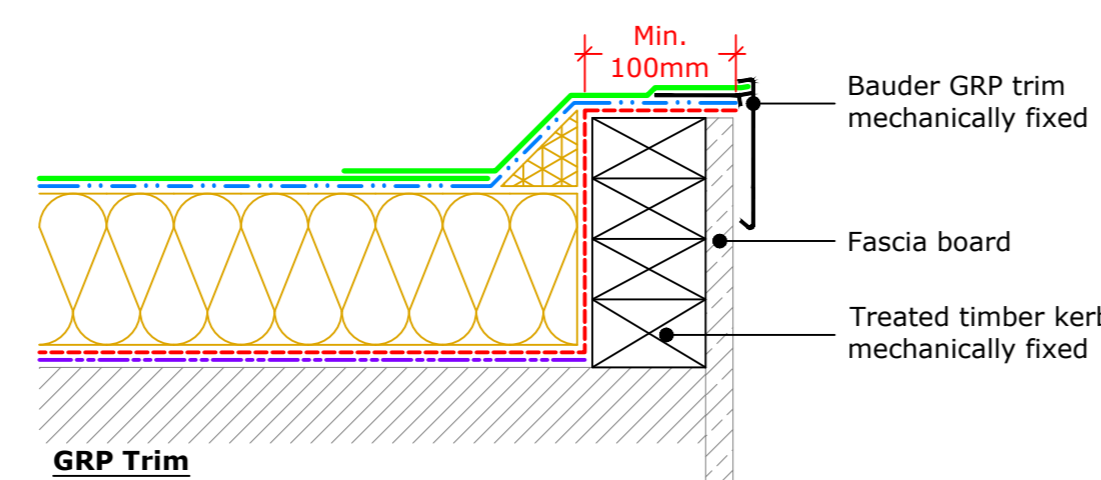
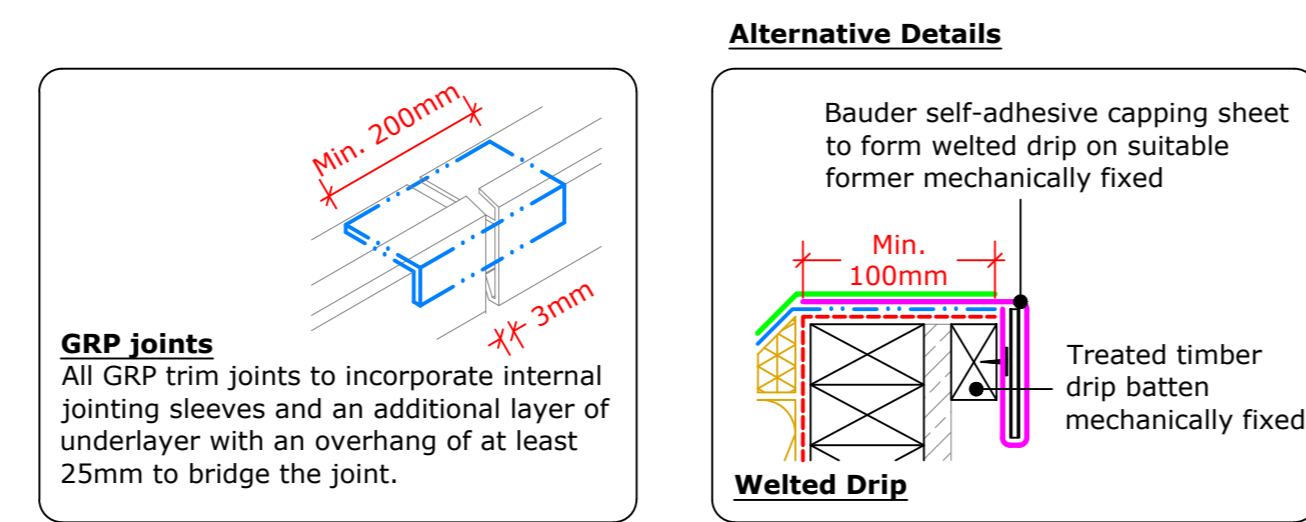
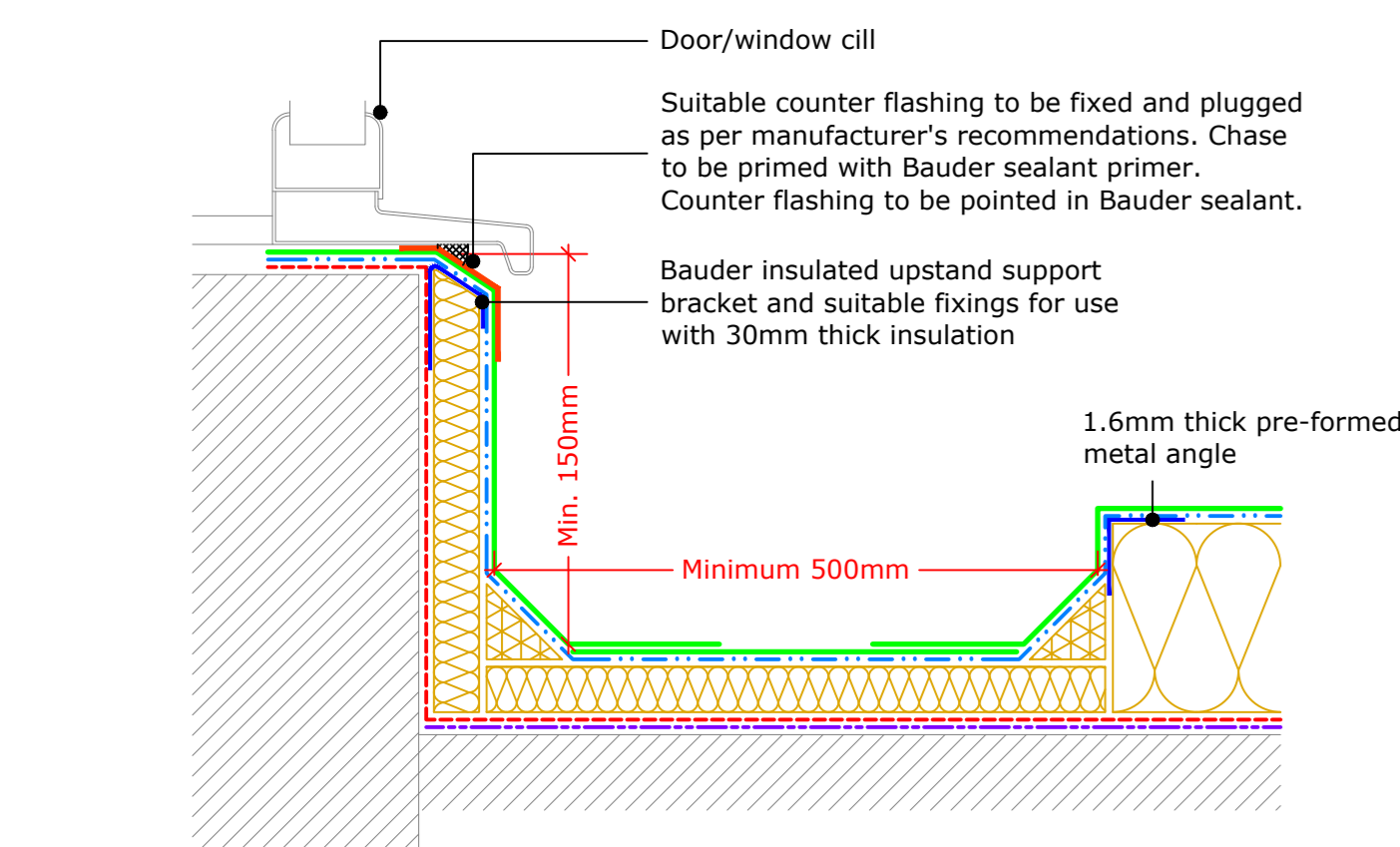


**Insulated Upstand**  
(Drg.No: D0000-00W\_201-001)

**Insulated Upstand to New Vertical Cladding or Slates/Tiles**  
(Drg.No: D0000-00W\_201-002)

**Upstand to Pitched Roof**  
(Drg.No: D0000-00W\_001-004)

**Insulated Upstand to Parapet**  
(Drg.No: D0000-00W\_203-001)



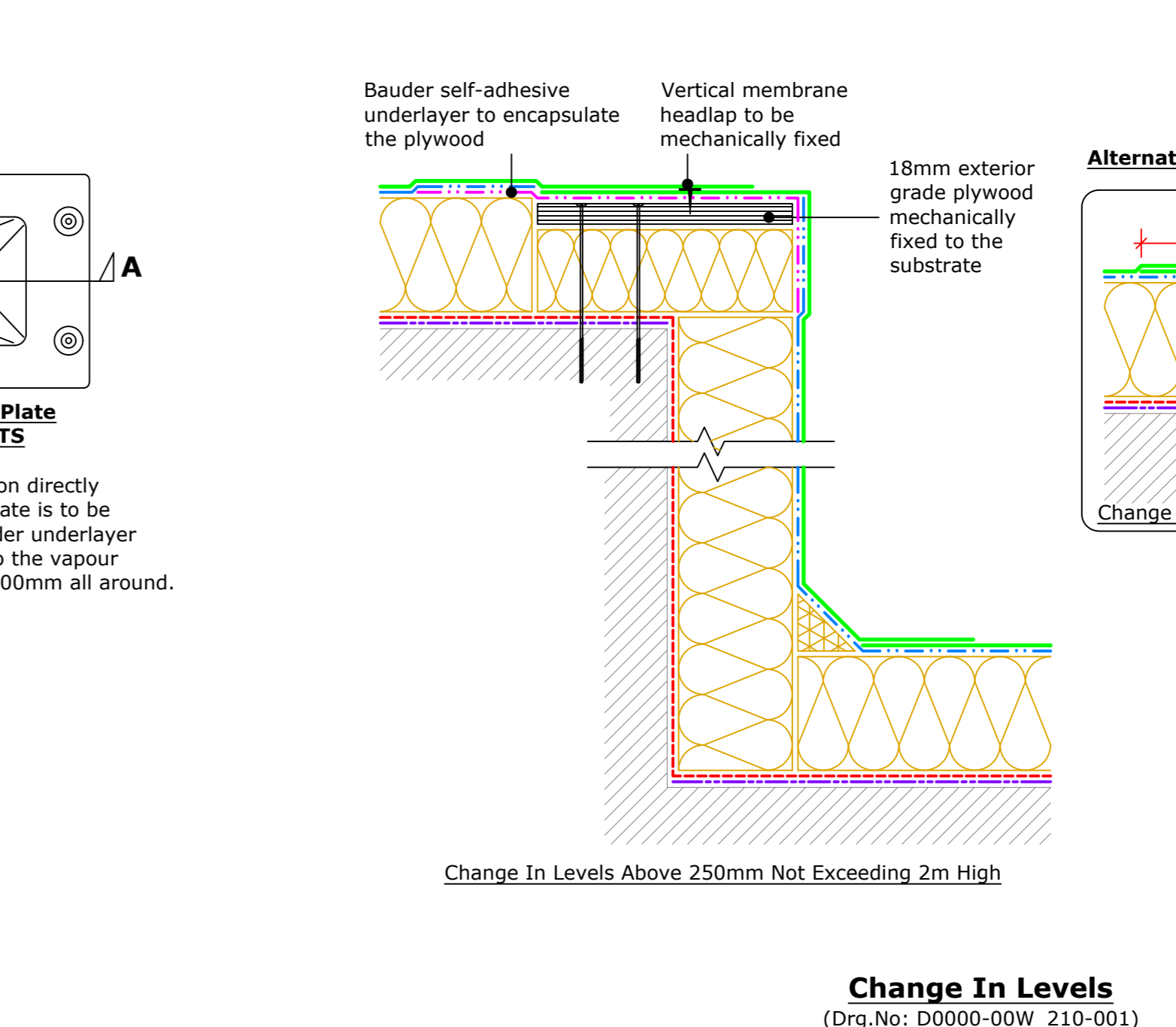
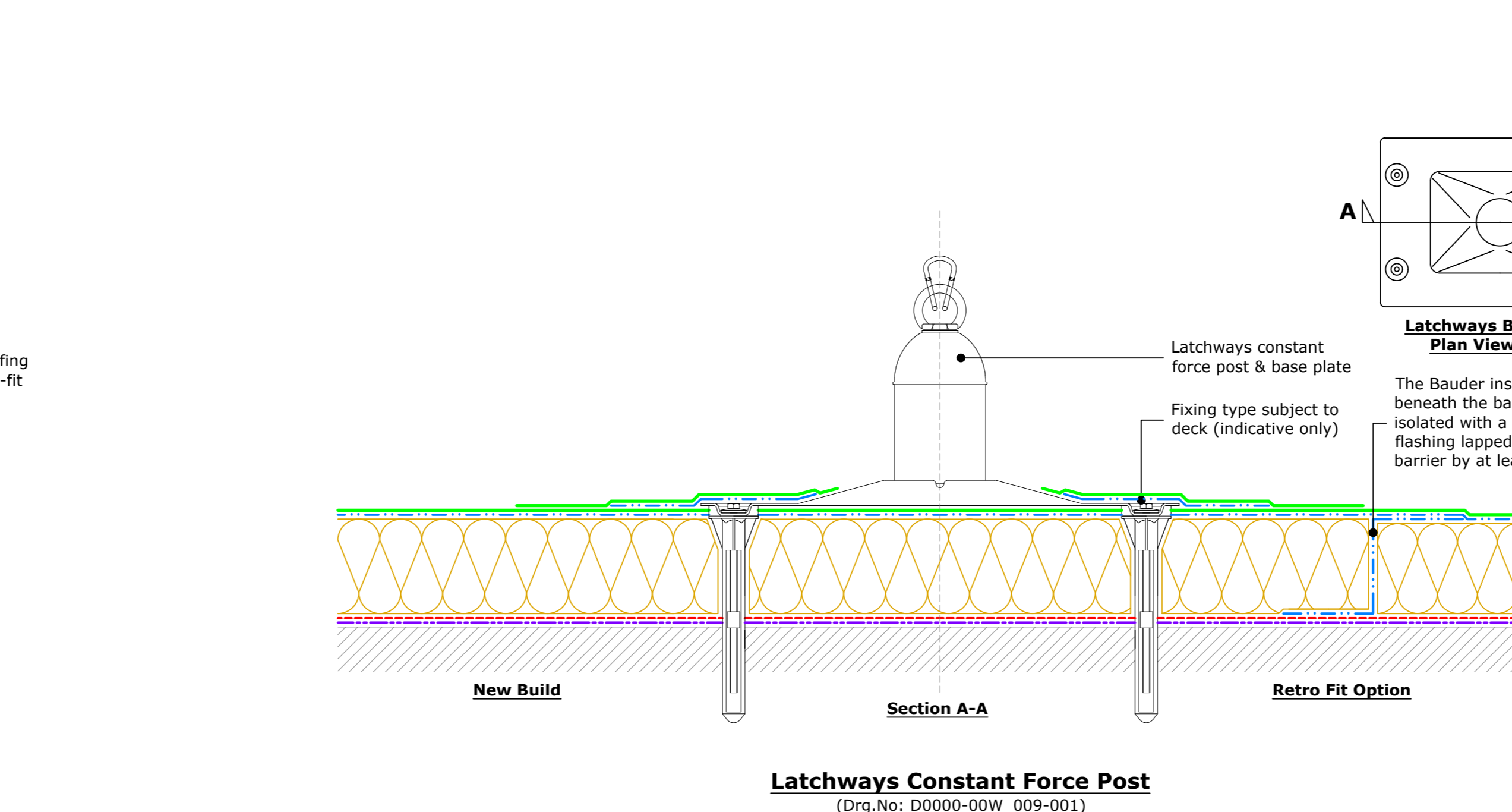
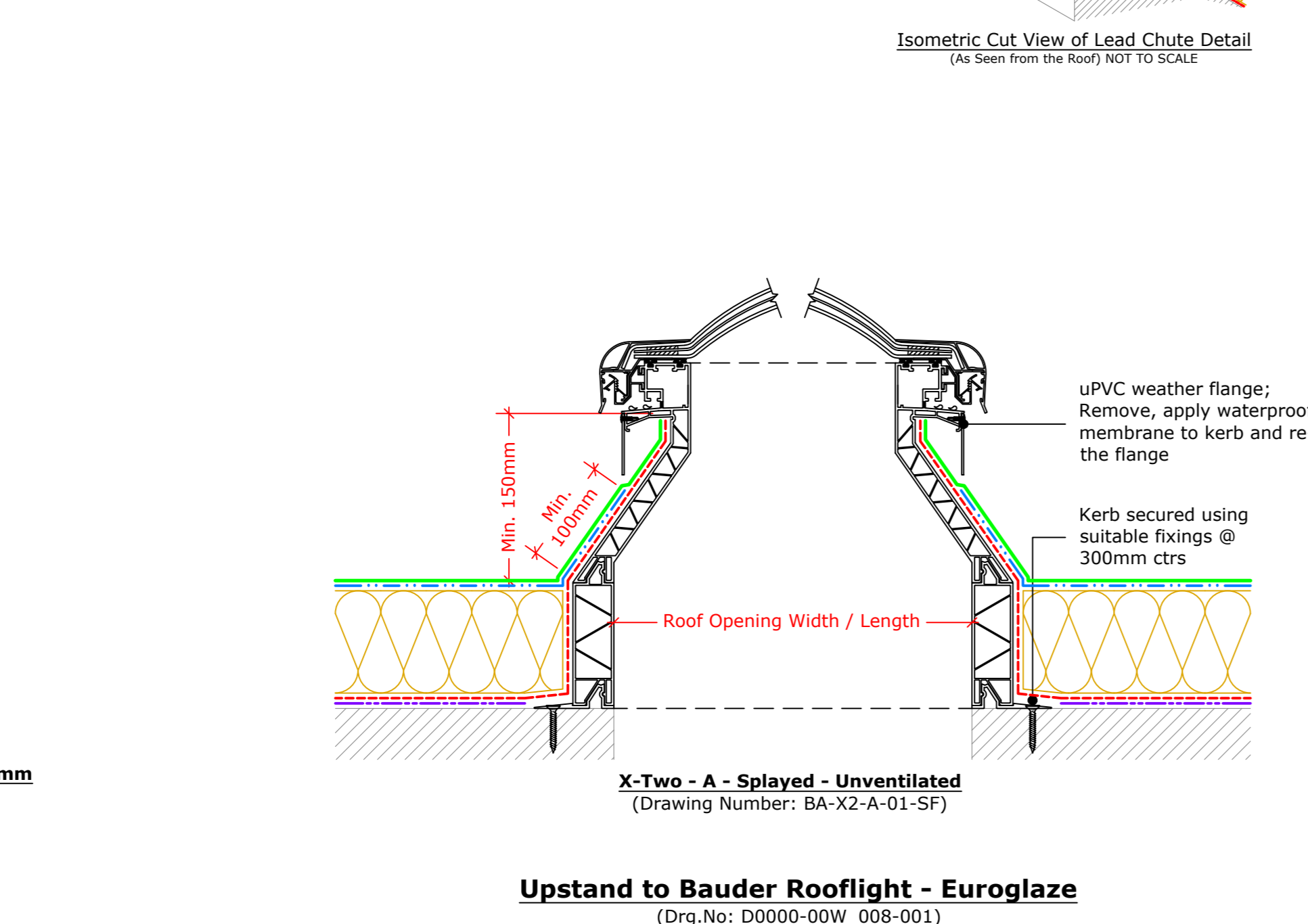
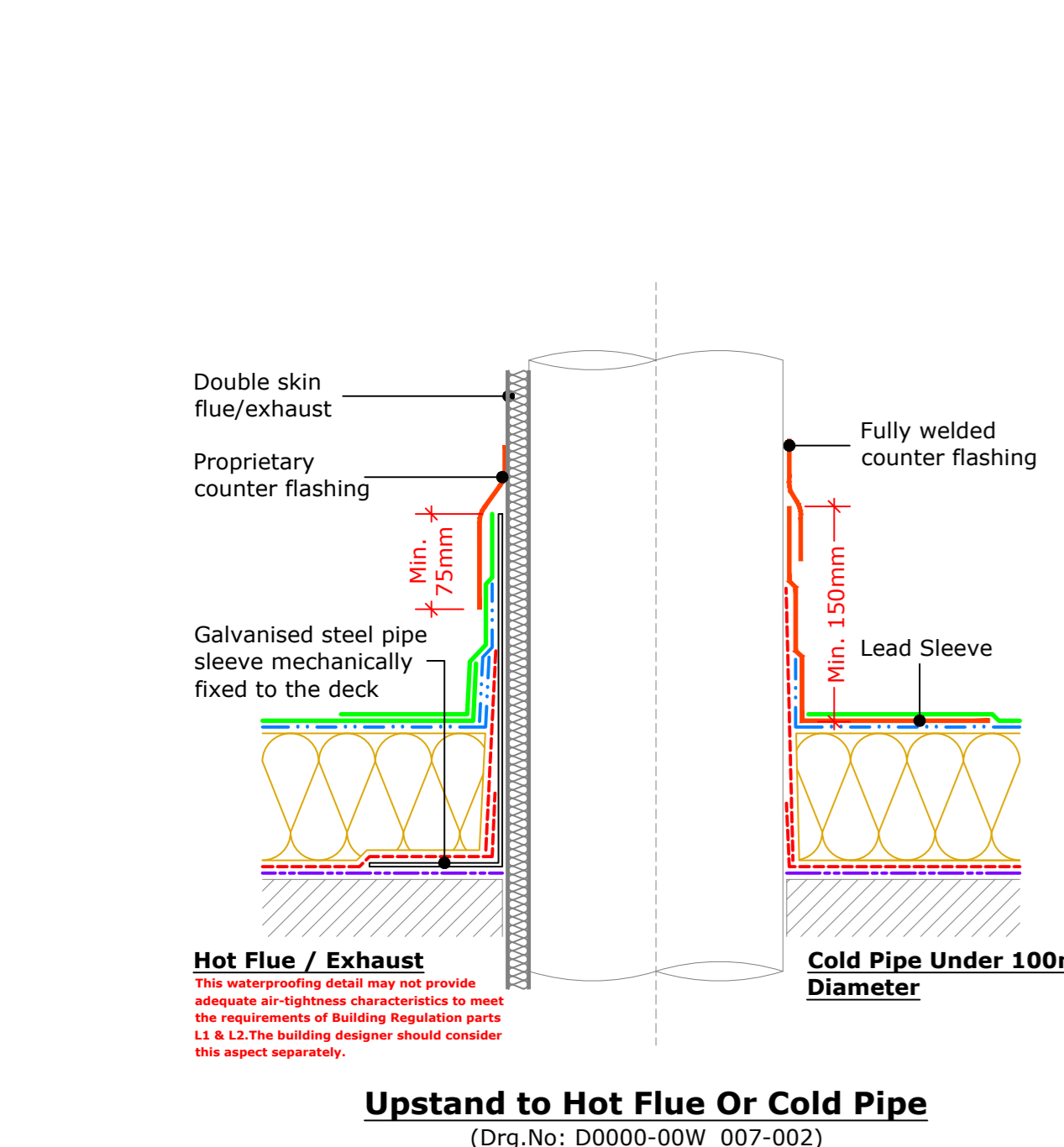
**Key**

- Bauder Capping Sheet (For all Green Roof details use Bauder Roof Resistant Cap Sheet)
- Bauder Underlayer
- Bauder Insulation
- Bauder Vapour Control Layer
- Use Bauder Self-Adhesive Vapour Control Layer on Combustible Substrates
- Bauder Random Relied Layer used on (Check Spec/Check) Deck / Substrate

**IMPORTANT NOTES:**  
This Drawing Shows Alternative Options. For the Correct Solution to be Used, Refer to the Project Specific Specification.

**COMBUSTIBLE SUBSTRATES:**  
The details contained within this drawing are deemed to be 'Safe to Torch' when using the Bauder Self-Adhesive Vapour Control Layer subject to adequate risk assessments.

For 'Torch-Free' Detailing see Drawing D0000-00W\_200-001TF



**IMPORTANT NOTES:**  
1. This detail is suitable for the following Bauder Systems: Bauder Total Roof System, Bauder Total Green Roof System, BauderFlex, BauderFlex Green Airtach.  
2. Do not scale to ascertain dimensions.  
3. All dimensions to be checked and verified on site prior to commencement of work.  
4. This drawing is to be read in conjunction with the specification and associated drawings.  
5. This detail is a guideline only, representing typical detailing conditions and illustrate the correct application of the above Bauder System. It may be necessary to modify this detail to suit specific project design constraints and conditions.  
6. Refer to the Bauder Specification for the product description and method of application. For clarity the method of attachment has not been shown.  
7. Provision should be made by the installer for mechanically fixing the top leading edge of all upstand details in excess of 250mm in height using appropriate fasteners.

**BITUMINOUS TYPICAL DETAILS (Insulated Upstands)**

Rev	Date	Description	Drawn By

**BAUDER**

**UK OFFICE**  
Bauder Limited  
70 Lonsdale Road, Ipswich,  
Suffolk, IP1 3DQ, UK.  
Tel: +44 (0)1473 257671  
Fax: +44 (0)1473 230761  
Email: bauderuk@bauder.co.uk  
bauder.co.uk

**IRELAND OFFICE**  
Bauder Limited  
O'Duffy Centre, Cross Lane,  
Carranmore, Co. Monaghan,  
Ireland.  
Tel: +353 (0)42 9692 333  
Fax: +353 (0)42 9692 879  
Email: bauderire@bauder.ie  
bauder.ie