

**DESIGN INTENT / INFORMATION ONLY:**

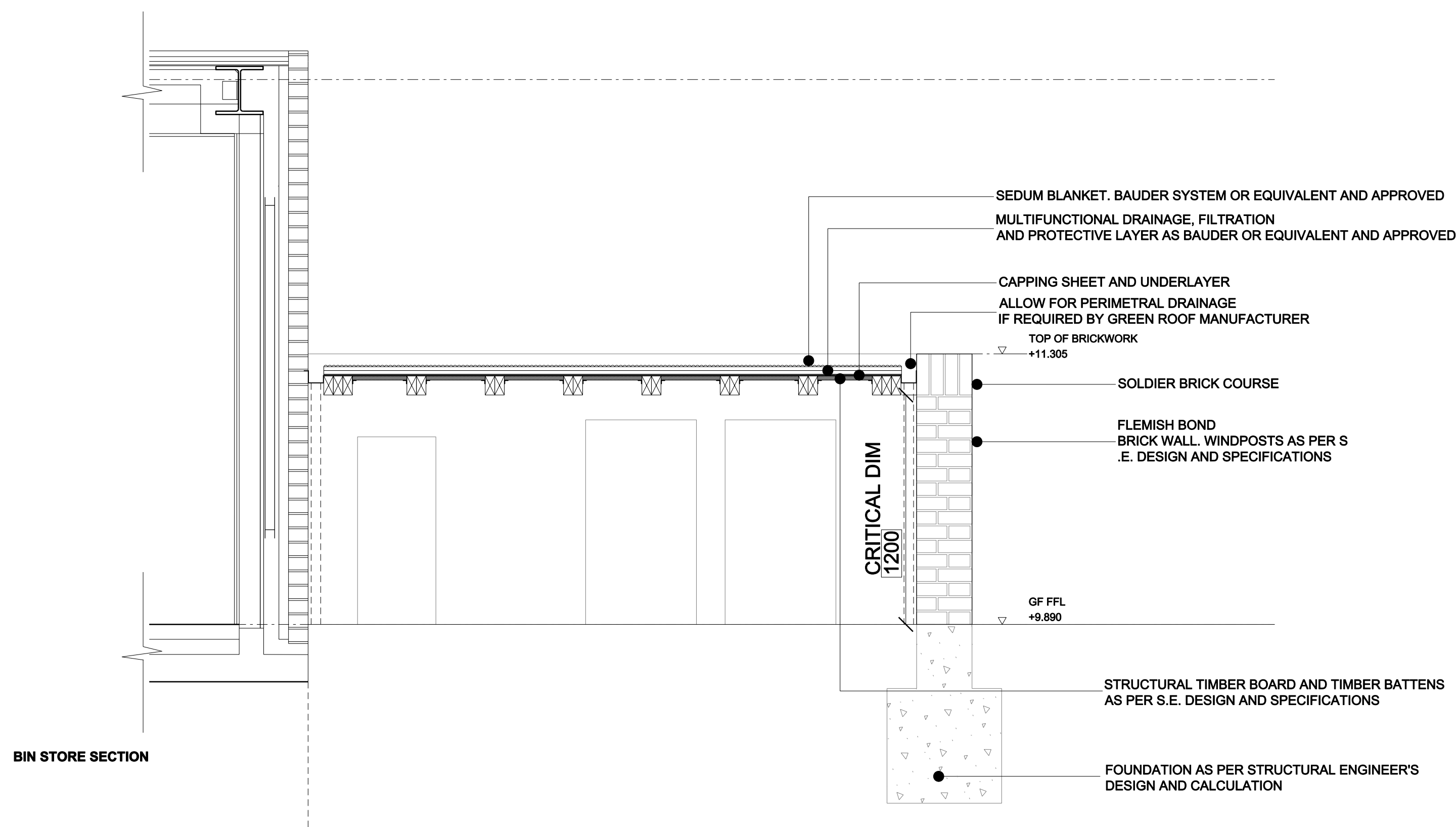
FOR A/C UNIT DIMENSIONS AND SPECIFICATION REFER TO M+E INFORMATION

CONTRACTOR TO ENSURE A/C UNIT AND 2no 240L BINS CAN FIT AND BE TAKEN OUT OF BIN STORE

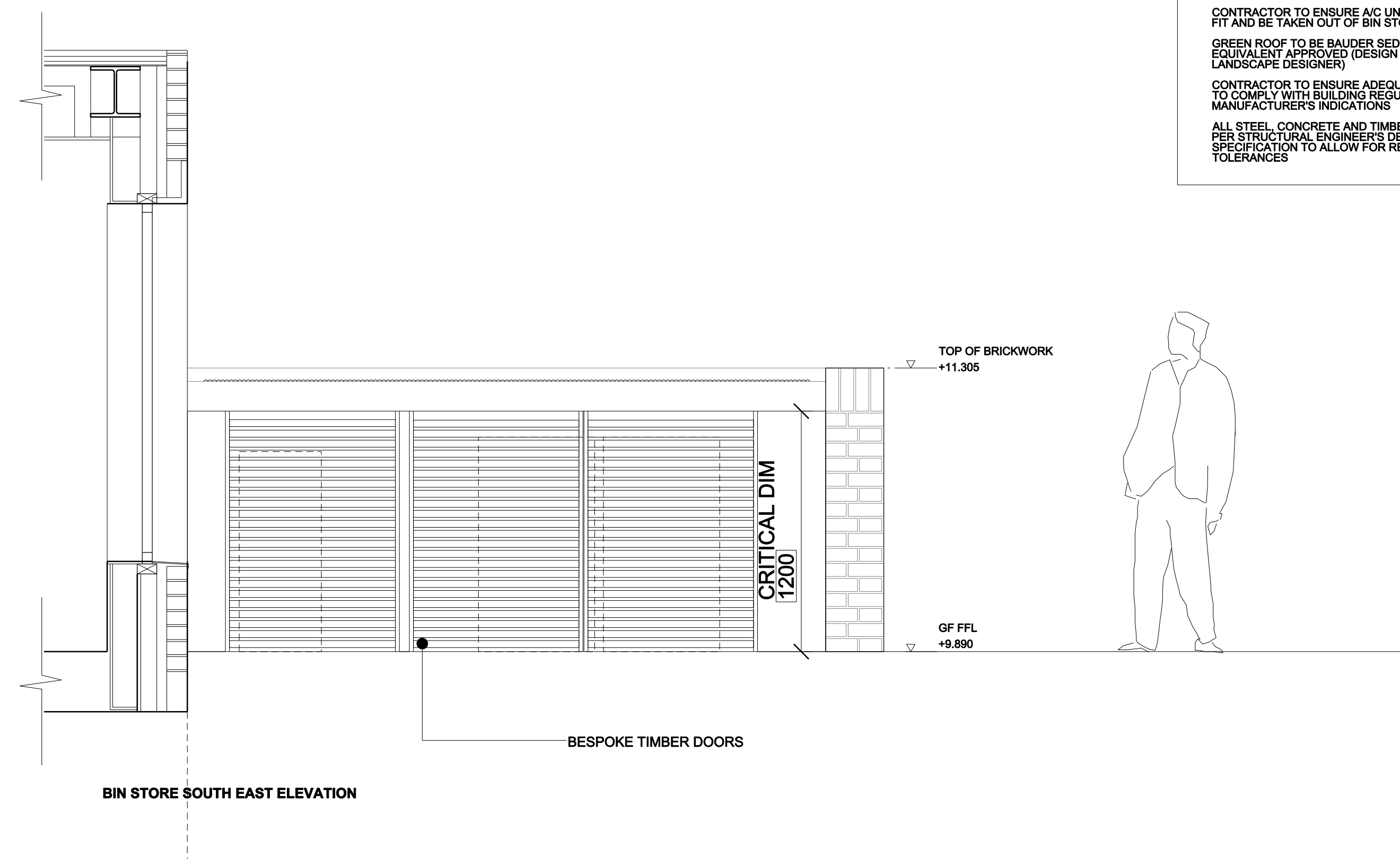
GREEN ROOF TO BE BAUDER SEDUM BLANKET SYSTEM OR EQUIVALENT APPROVED (DESIGN AND SPECIES BY LANDSCAPE DESIGNER)

CONTRACTOR TO ENSURE ADEQUATE FALL AND DRAINAGE TO COMPLY WITH BUILDING REGULATIONS AND MANUFACTURER'S INDICATIONS

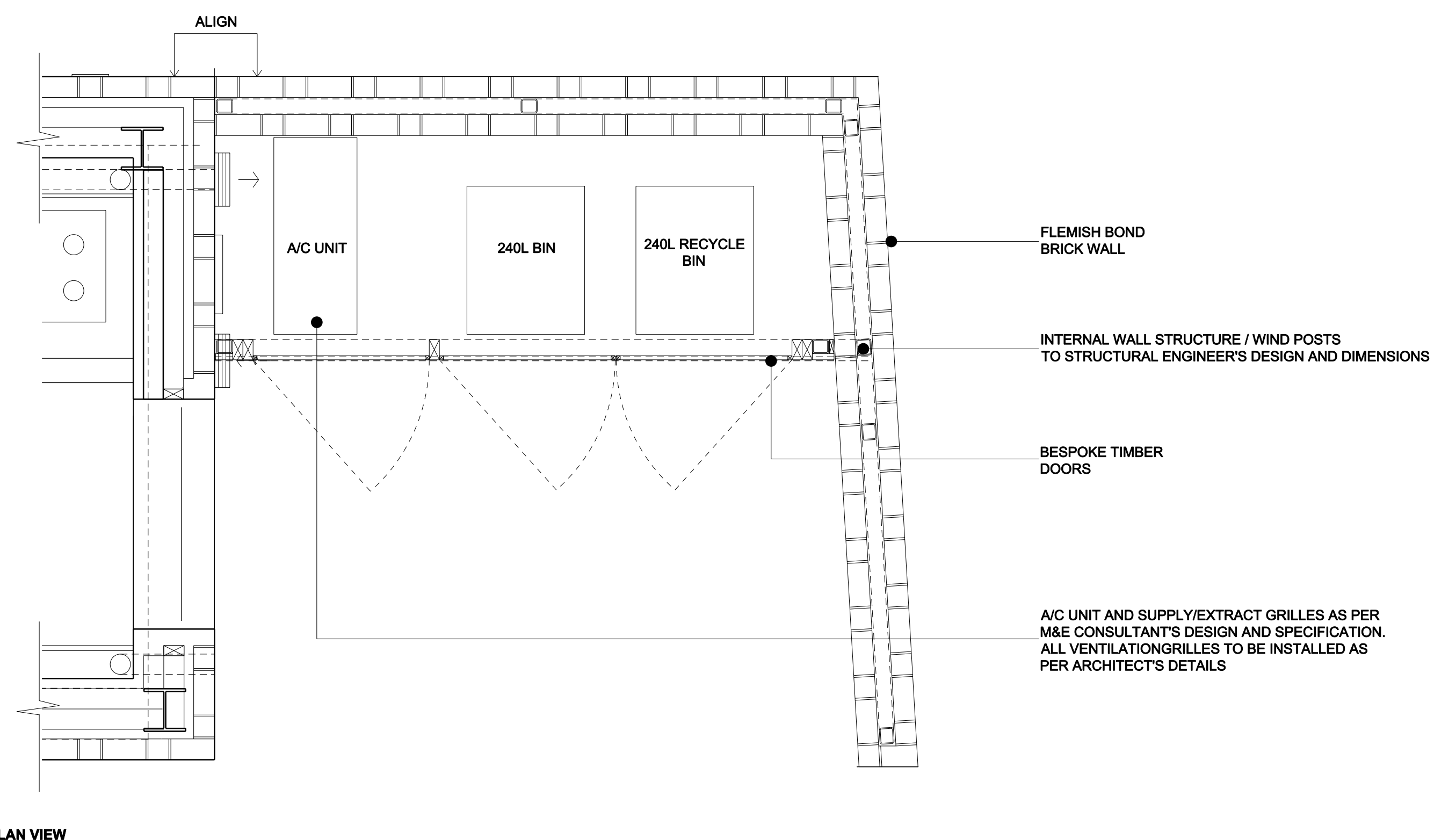
ALL STEEL, CONCRETE AND TIMBER ELEMENTS TO BE AS PER STRUCTURAL ENGINEER'S DESIGN, DIMENSIONS AND SPECIFICATION TO ALLOW FOR RELEVANT BUILDING TOLERANCES



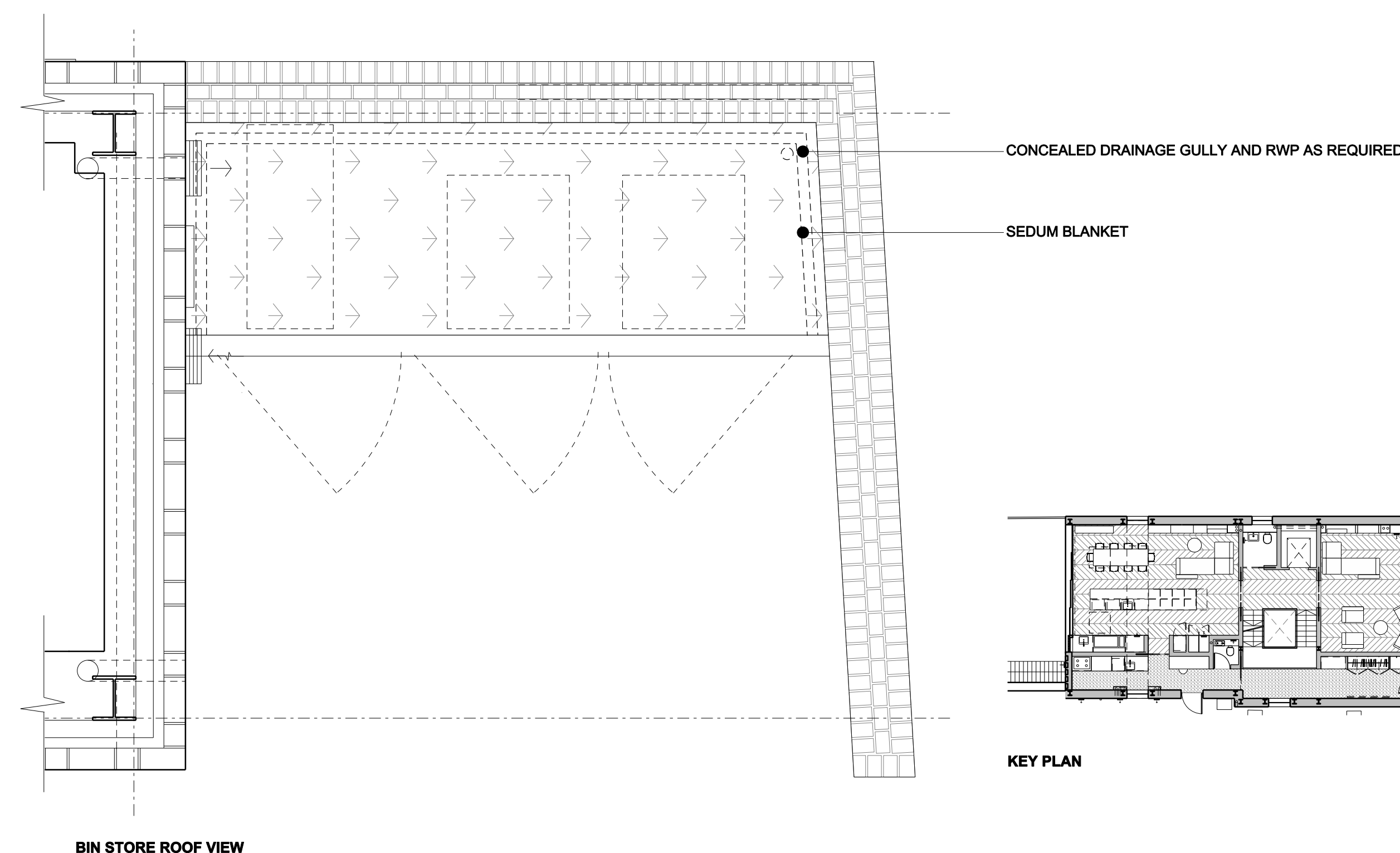
BIN STORE SECTION



BIN STORE SOUTH EAST ELEVATION



BIN STORE PLAN VIEW



BIN STORE ROOF VIEW

| REV. | DATE       | DESCRIPTION       | REV. | DATE | DESCRIPTION |
|------|------------|-------------------|------|------|-------------|
| -    | 11.10.2019 | ISSUED FOR TENDER |      |      |             |
|      |            |                   |      |      |             |
|      |            |                   |      |      |             |
|      |            |                   |      |      |             |
|      |            |                   |      |      |             |

**NOTES:**

- ALL DIMENSIONS IN MM UNLESS OTHERWISE STATED
- THIS DRAWING IS TO BE READ IN CONJUNCTION WITH ALL RELEVANT CONTRACT DOCUMENTS
- THIS DRAWING IS TO BE READ IN CONJUNCTION WITH ALL ENGINEER'S DRAWINGS
- DO NOT SCALE FROM THIS DRAWING
- REPORT ANY ERRORS, CONTRADICTIONS, & OMISSIONS TO THE ARCHITECT AS SOON AS POSSIBLE
- WHEN THIS DRAWING IS ISSUED IN DWG FORMAT IT IS AN UNCONTROLLED VERSION ISSUED TO ENABLE THE RECIPIENT TO PREPARE THEIR OWN DRAWINGS FOR WHICH THEY ARE SOLELY RESPONSIBLE. IT IS BASED ON BACKGROUND INFORMATION CURRENT AT TIME OF ISSUE.
- BEN ADAMS ARCHITECTS ACCEPTS NO LIABILITY FOR ANY SUCH ALTERATIONS OR ADDITIONS TO OR DISCREPANCIES ARISING OUT OF CHANGES TO SUCH BACKGROUND INFORMATION WHICH OCCUR AFTER IT IS ISSUED BY BEN ADAMS ARCHITECTS.

**KEY:**

|  |  |   |
|--|--|---|
| <b>Ben Adams Architects</b><br><small>Third Floor, 79 Southbank Street, London SE1 0UP</small>                       |  | <b>DRAWING NAME:</b><br><b>BIN STORE</b>        |
| <small>T: 020 7633 0000<br/>         ben@benadamsarchitects.co.uk<br/>         info@benadamsarchitects.co.uk</small> |  | <b>PROJECT NAME:</b><br><b>30 Glenilla Road</b> |
| <b>JOB NO:</b><br><b>17-058</b>  | <b>SCALE:</b><br><b>1:100 @ A3 1:20 @ A1</b> | <b>DRAWING NO:</b><br><b>A820/-</b>             |
| <b>STAGE:</b><br><b>STAGE 4</b>  |  |   |