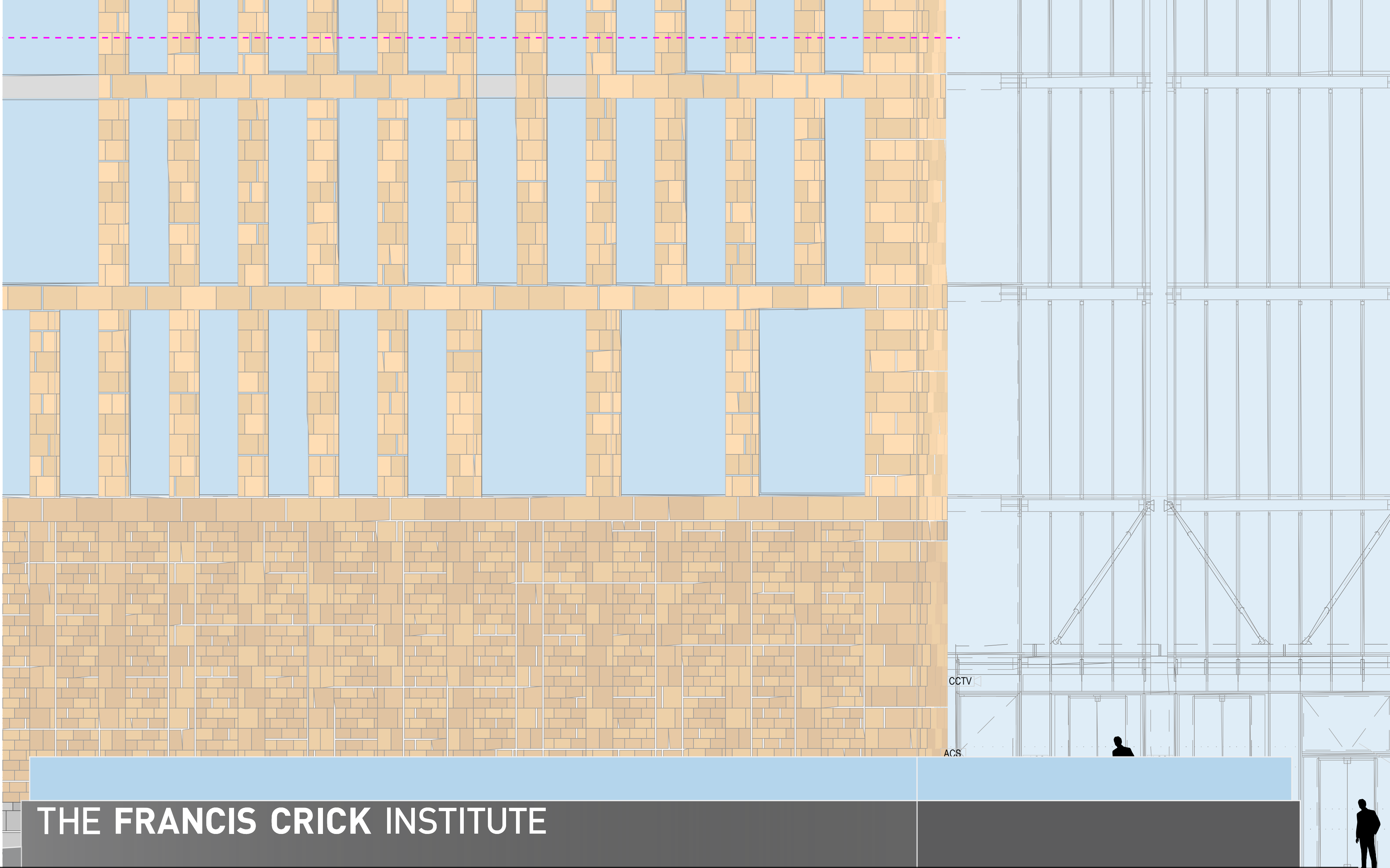


Area 3. Balustrade
Visual 2 of 3:
Exisiting Elevation

Drawing Scale
100 : 1 printed at A3



Area 3. Balustrade
Visual 3 of 3:
Proposed Elevation*

Dimensions
Width: 30480 mm
Height: 1052 mm

Artwork material
Printed adhesive vinyl

* Please Note
Balustrade is indicative and
for illustration purposes
only. Visual is shown to
demonstrate what content
might be placed here.

Drawing Scale
100 : 1 printed at A3

