

Red outline shows location of Flat 78, Jessel House, London WC1H 9NU.

The proposed replacement windows are located on the Judd Street elevation of this sixth floor flat.





Exterior view



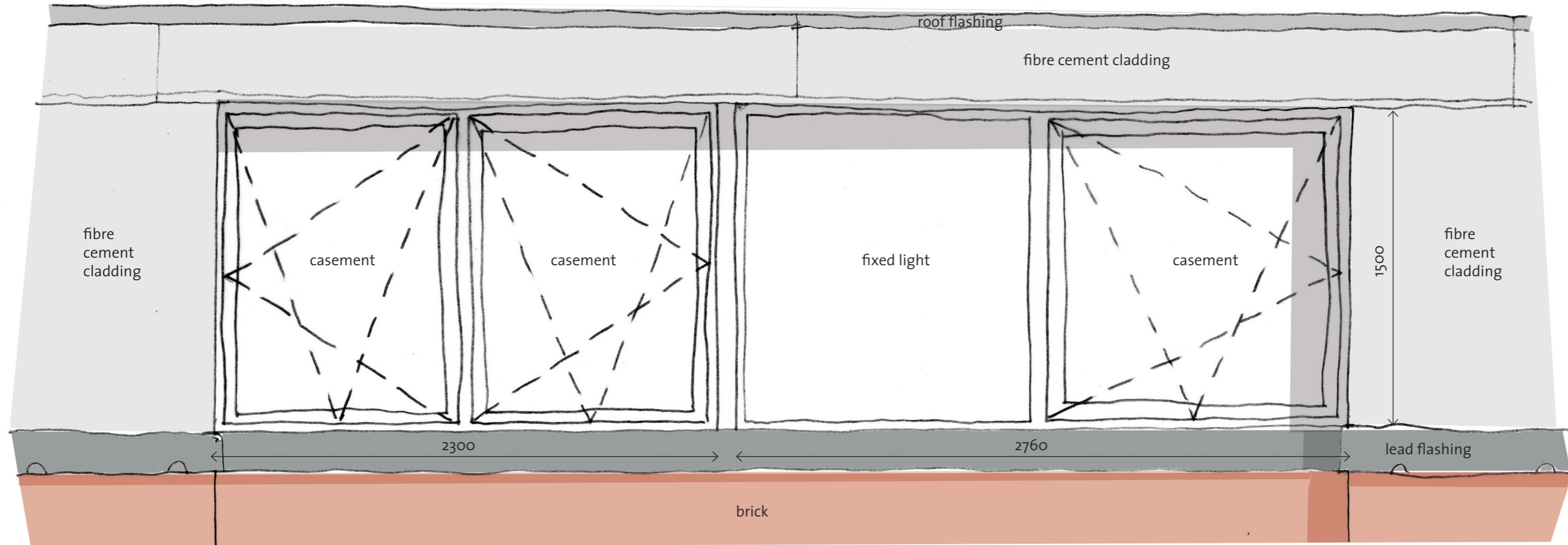
Exterior view



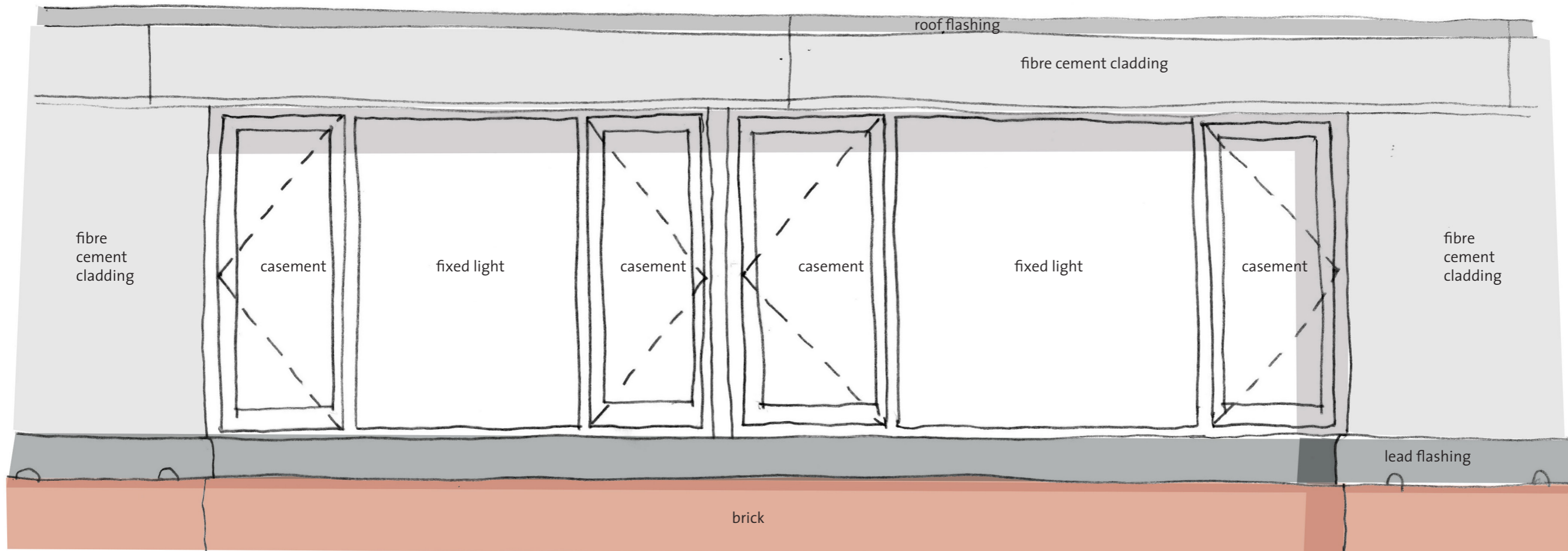
Interior view of existing windows



Exterior view



Existing upvc windows Inward opening side and bottom hung casements, white upvc frames, double glazed, sizes 2300 x 1500 and 2760 x 1500.



Proposed Accoya windows Outward opening side hung casements on easy clean friction hinges, white finished Accoya wood frames, argon filled double glazing with low-E glass. Size of structural openings unchanged.