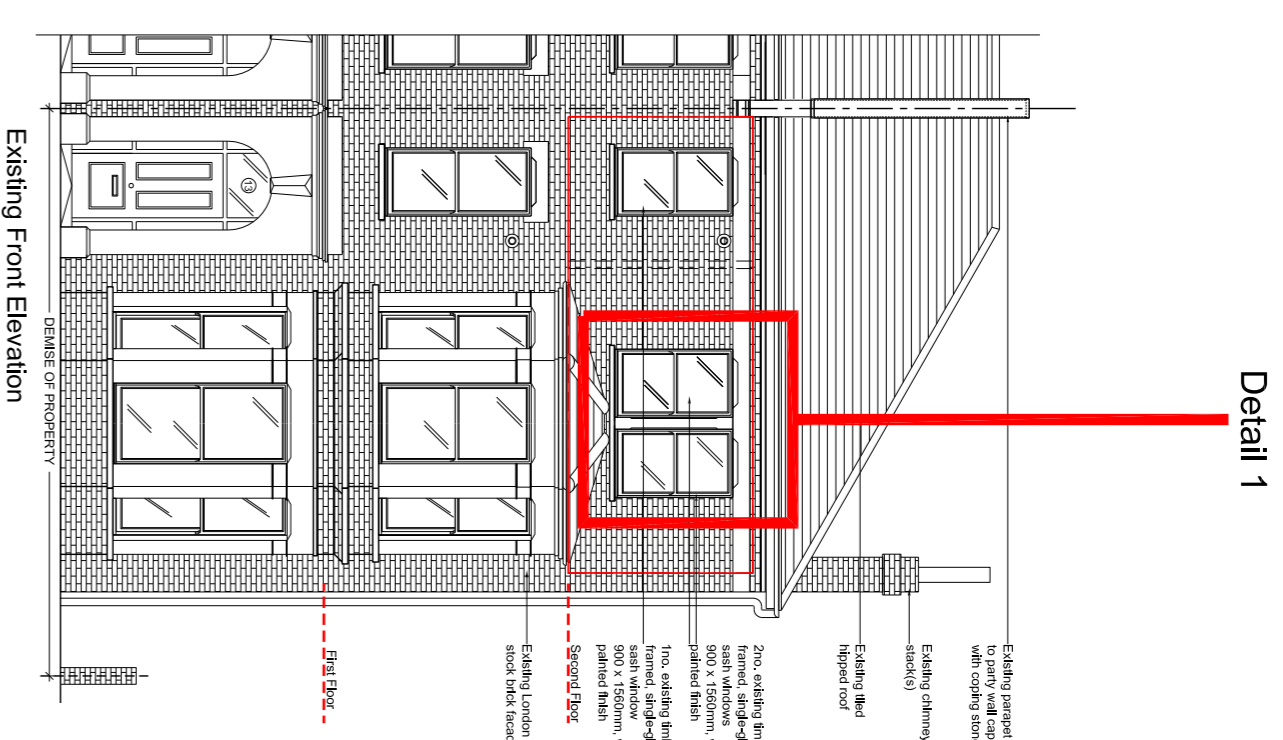
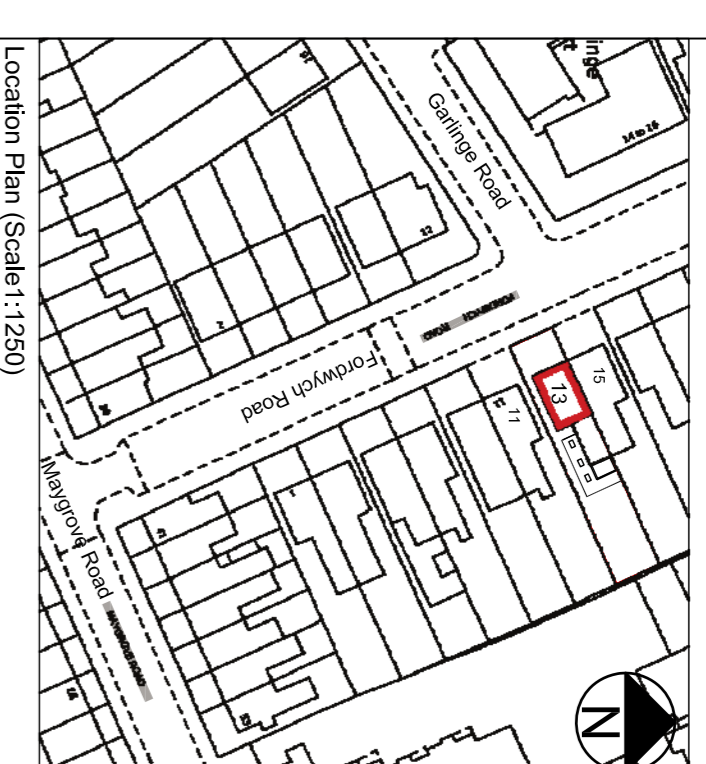
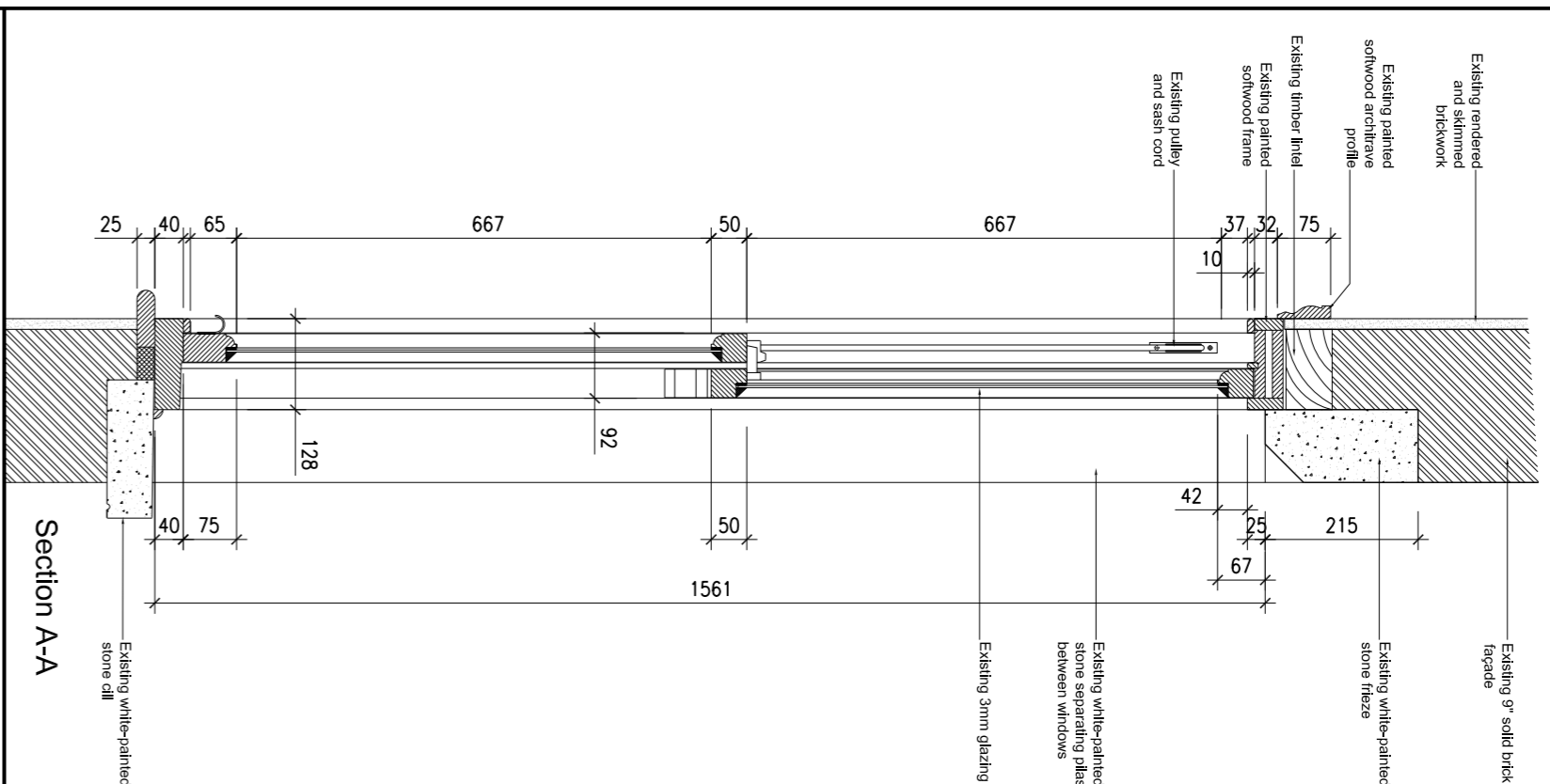


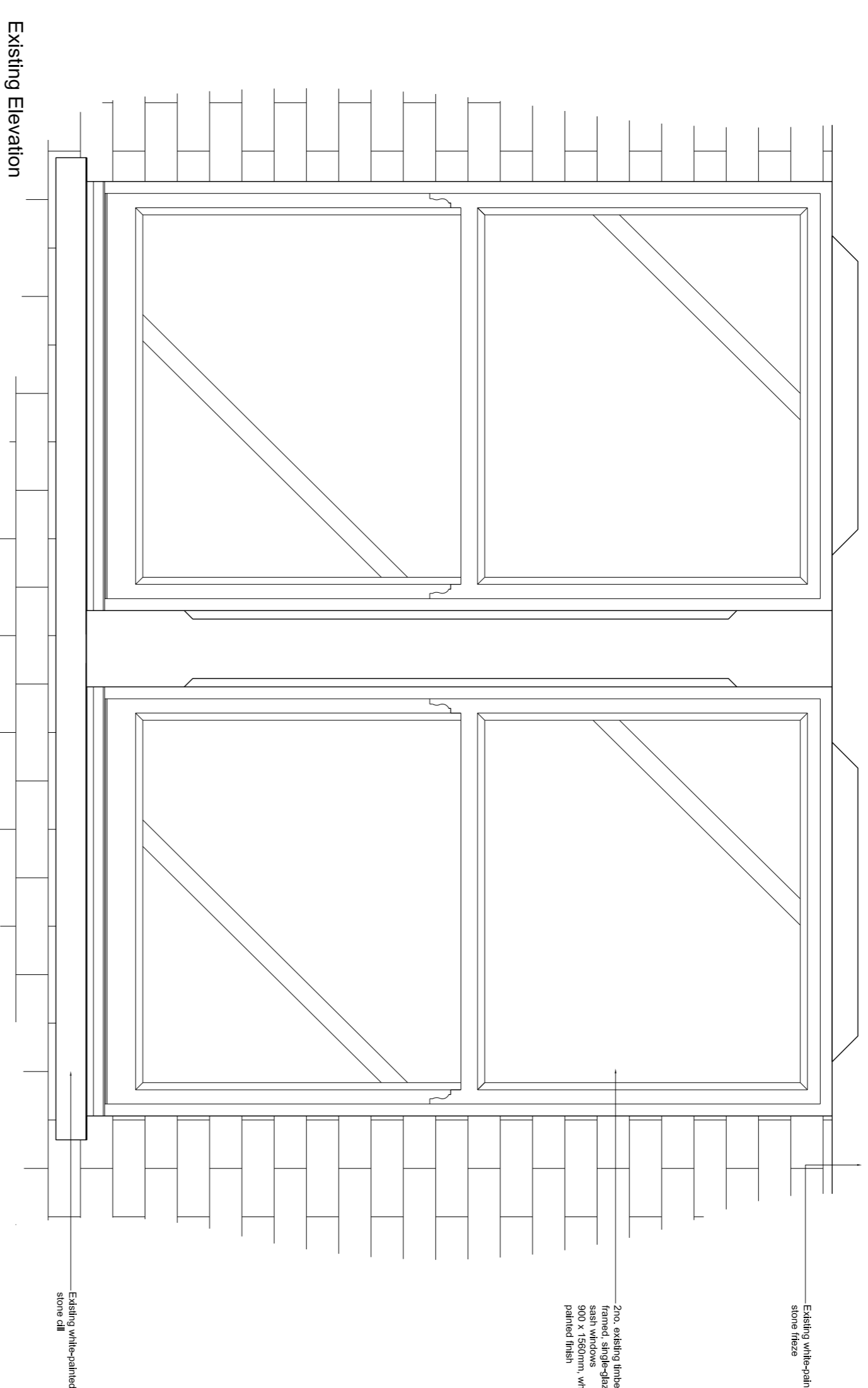
THE CONSULTANT IS RESPONSIBLE FOR CHECKING DIMENSIONS, TO ERRORS AND OMISSIONS, AND FOR THE ACCURACY OF THE INFORMATION PROVIDED. THE CONSULTANT DOES NOT ACCEPT LIABILITY FOR THE ACCURACY OF THE INFORMATION PROVIDED. THE CONSULTANT DOES NOT ACCEPT LIABILITY FOR THE ACCURACY OF THE INFORMATION PROVIDED. THE CONSULTANT DOES NOT ACCEPT LIABILITY FOR THE ACCURACY OF THE INFORMATION PROVIDED.



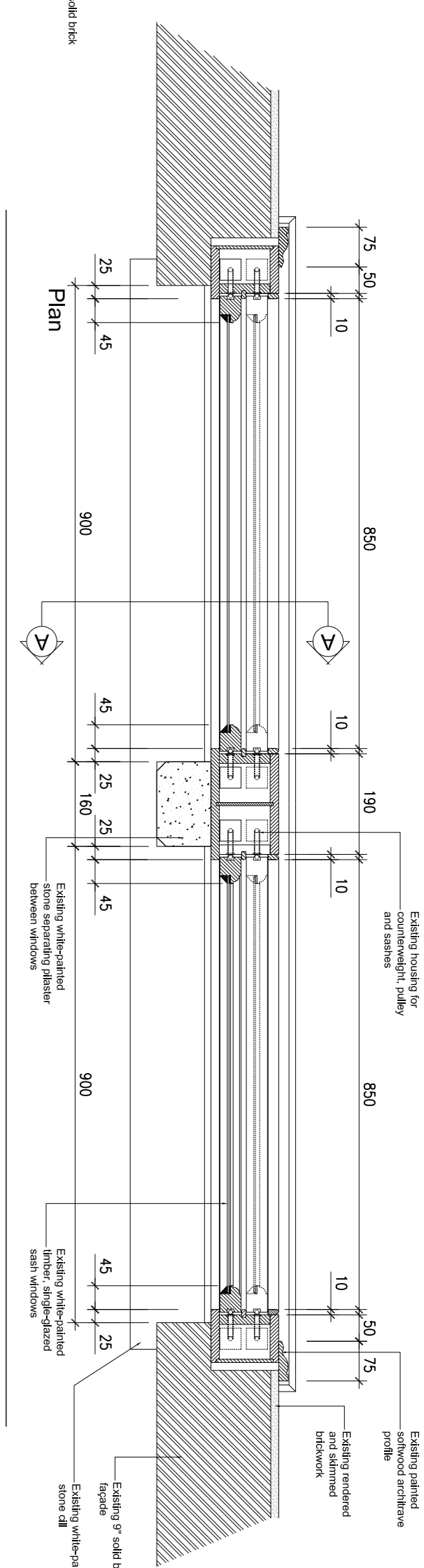
Detail 1: Existing



Section A-A

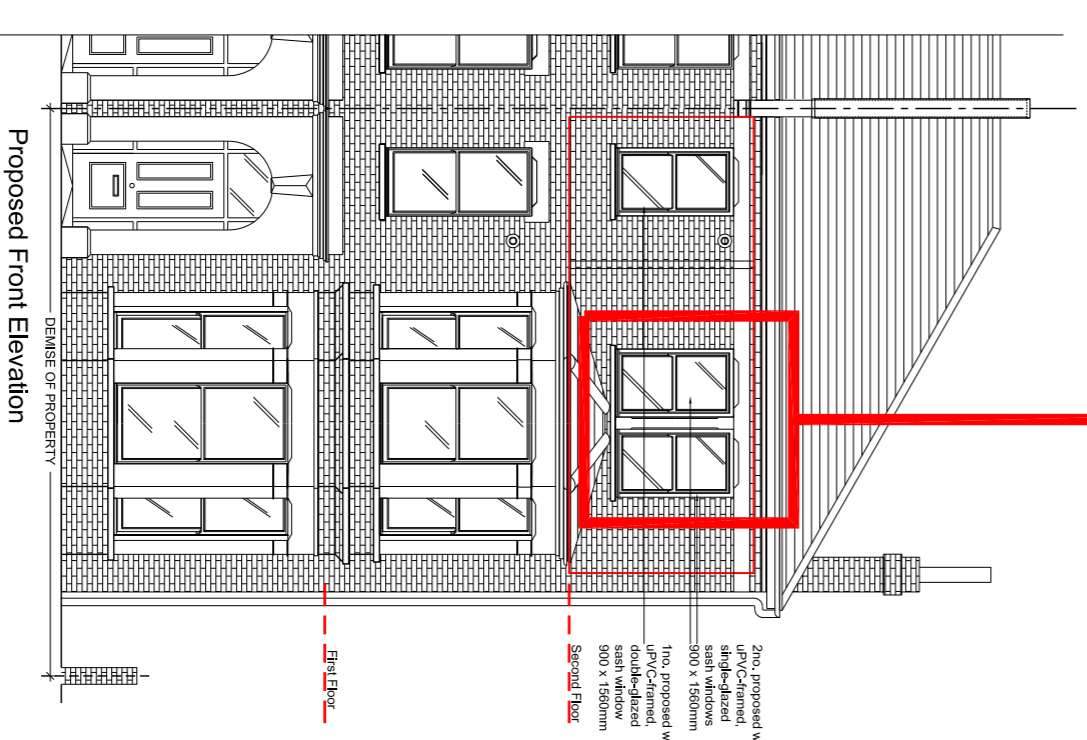


Existing Elevation



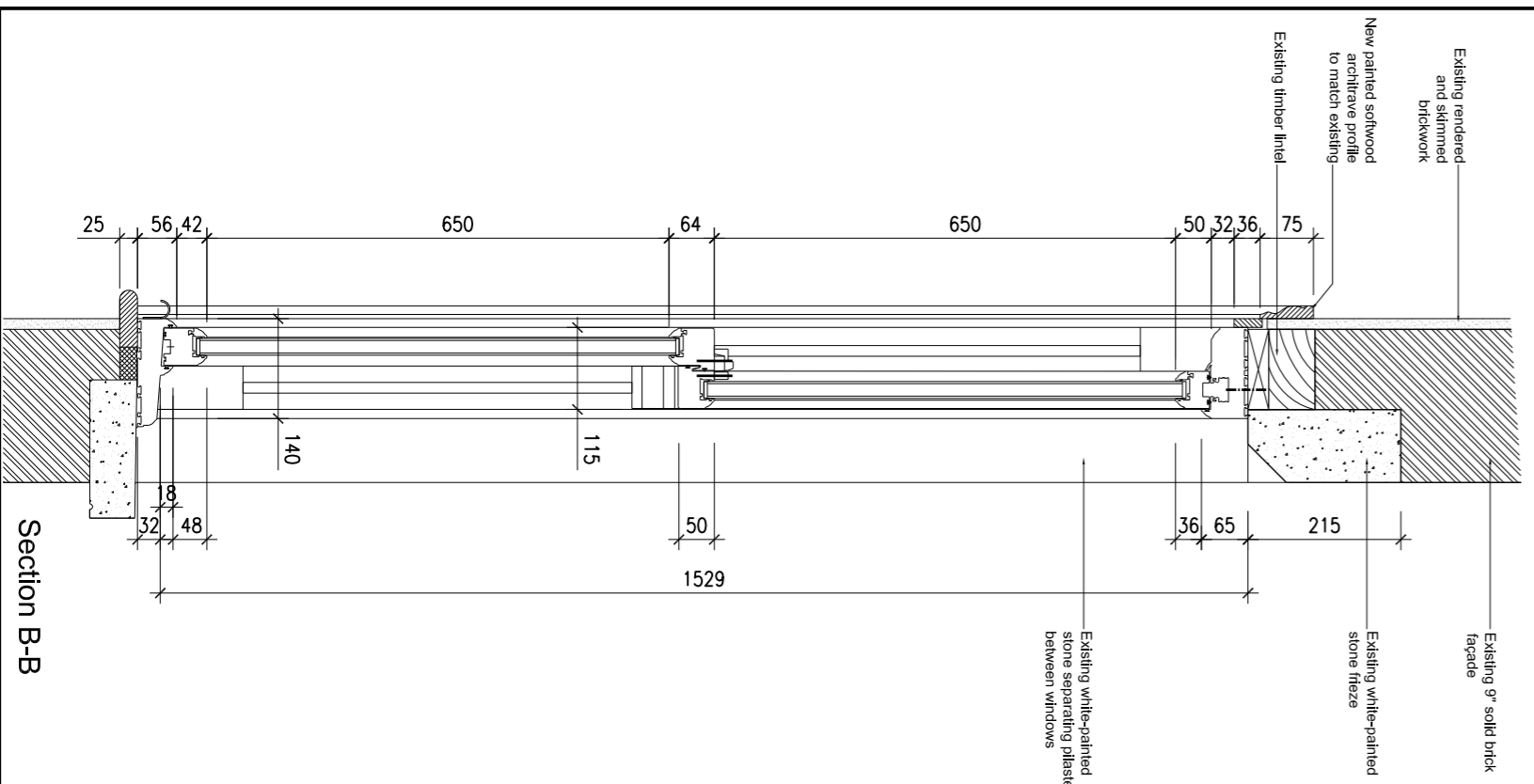
Plan

Detail 2

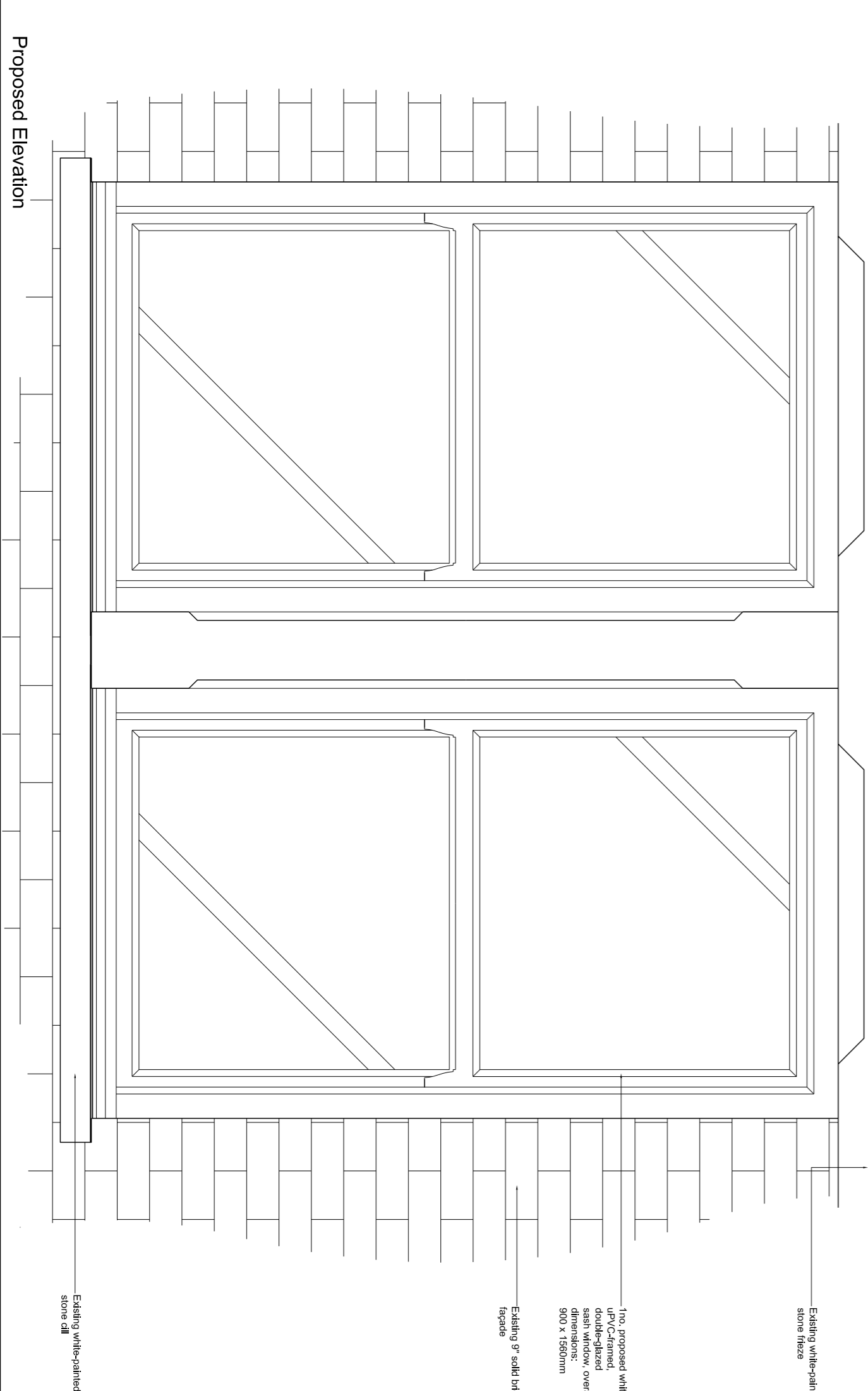


Proposed Front Elevation

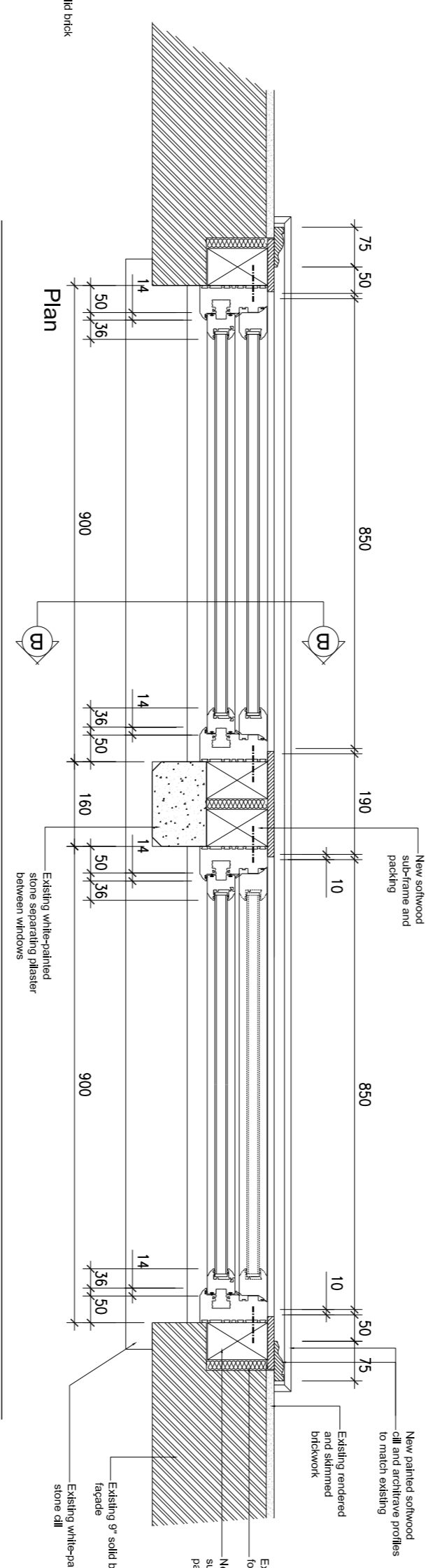
Detail 2: Proposed



Section B-B



Proposed Elevation



Plan

Ray Draper Design & Architecture
 30 Sillbury Road, Godstone, Surrey RH9 9AB.
 T: 07984 849814 E: ray@rdsdesign.co.uk

Planning Application
 (ref.: Ref PP-09320021v1)

PROJECT:
 Flat C 13 Fordwych Road NW2 3TN

DRAWING:
 Existing and Proposed Sash Window
 Typical Details

CLIENT:
 Mr. A. Bodily

Plan No.: Ford13-P4
Revision: AB

SCALE: 1:10 (@DIN A1)
DATE: 01.06.2021

NOTES:

1. The drawings are to be read in conjunction with the Planning Application Form and the Planning Application Statement.
2. The drawings are to be read in conjunction with the Planning Application Form and the Planning Application Statement.
3. The drawings are to be read in conjunction with the Planning Application Form and the Planning Application Statement.
4. The drawings are to be read in conjunction with the Planning Application Form and the Planning Application Statement.
5. The drawings are to be read in conjunction with the Planning Application Form and the Planning Application Statement.
6. The drawings are to be read in conjunction with the Planning Application Form and the Planning Application Statement.
7. The drawings are to be read in conjunction with the Planning Application Form and the Planning Application Statement.
8. The drawings are to be read in conjunction with the Planning Application Form and the Planning Application Statement.
9. The drawings are to be read in conjunction with the Planning Application Form and the Planning Application Statement.
10. The drawings are to be read in conjunction with the Planning Application Form and the Planning Application Statement.