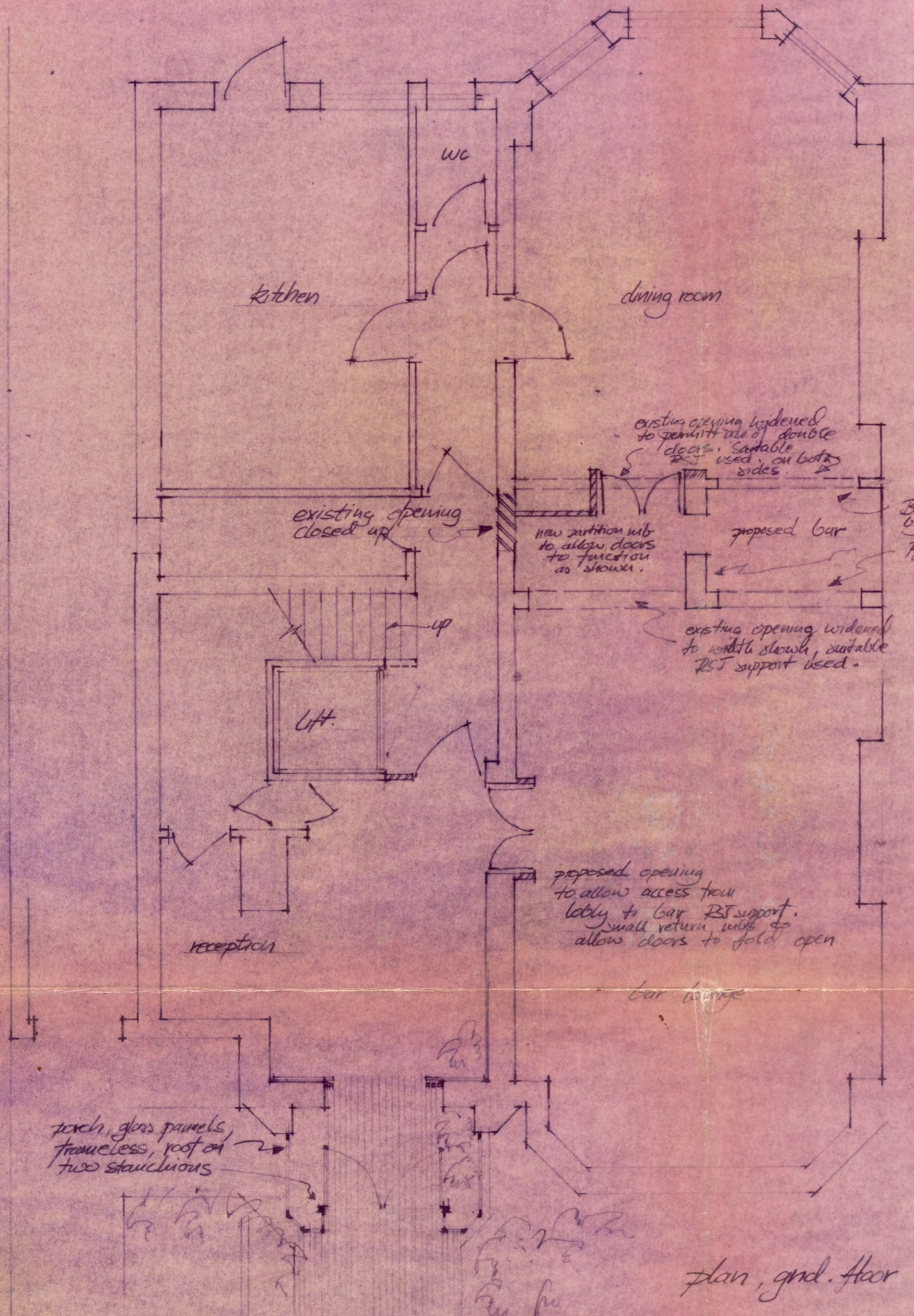


NOTE:  
TO NOT SCALE

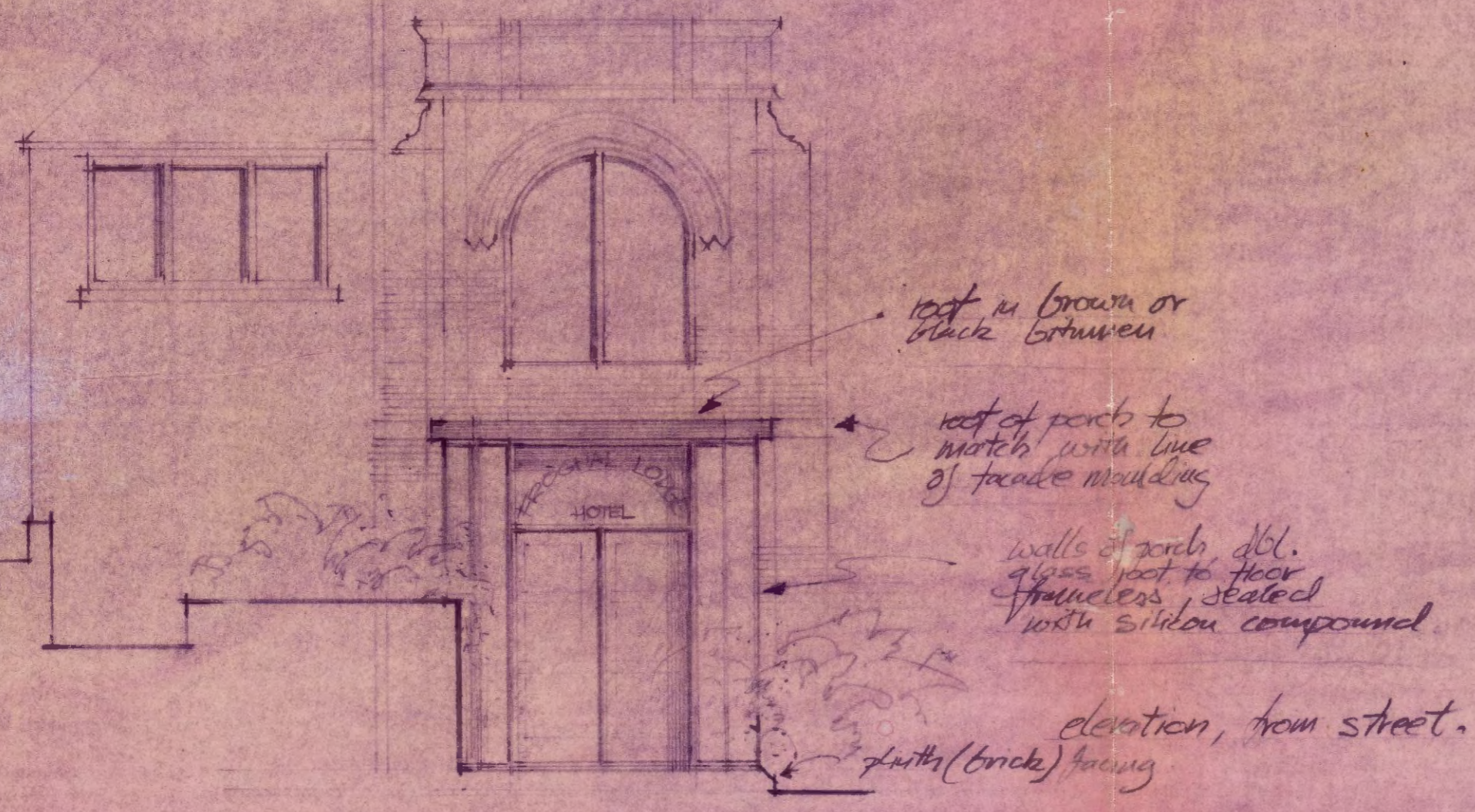


plan, grd. floor

CTP/E6/12/C/30728

LONDON BOROUGH OF CAMDEN  
TOWN AND COUNTRY PLANNING ACTS  
27 AUG 1980  
APPROVED  
PLANS ~~NOT APPROVED~~  
ON BEHALF OF THE COUNCIL

1. OUTLINE PROPOSALS FOR A PERCH EXTENSION OF LIGHTWEIGHT CONSTRUCTION.  
2. PROPOSED ALTERATION TO INTERNAL WALLS TO IMPROVE INT. CIRCULATION & ASPECTS



14 FROGNAL GENS FROGNAL LODGE HOTEL

INTERNAL ALT PERCH STREET ASPECT SCALE 1:48

3/80 0330/HF/1

Total Design