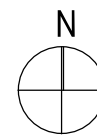
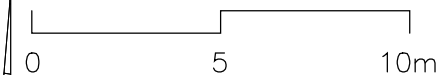




PLANNING



Scale bar



01	04.06.21	Issue for discharge of conion no. 5	CL	RM
Rev	Date	Description	Drawn	Checked

Do not scale from this drawing
 All dimensions are to be checked on site
 Any discrepancies are to be reported immediately to the Architect or Main Contractor

COPYRIGHT © 2021
 ALL RIGHTS DESCRIBED IN THE CHAPTER IV OF THE COPYRIGHT DESIGN AND PATENTS ACT 1988, HAVE BEEN GENERALLY ASSERTED

Richard Morton Architects Ltd

The Bungalow, Home Yard, Hatfield House, AL9 5NF
 Tel: 0203 179 9030

Email: richard@rm-architects.com
 Web: www.rm-architects.com



Client
So & Co. Building Services
For Mrs Candy Wong

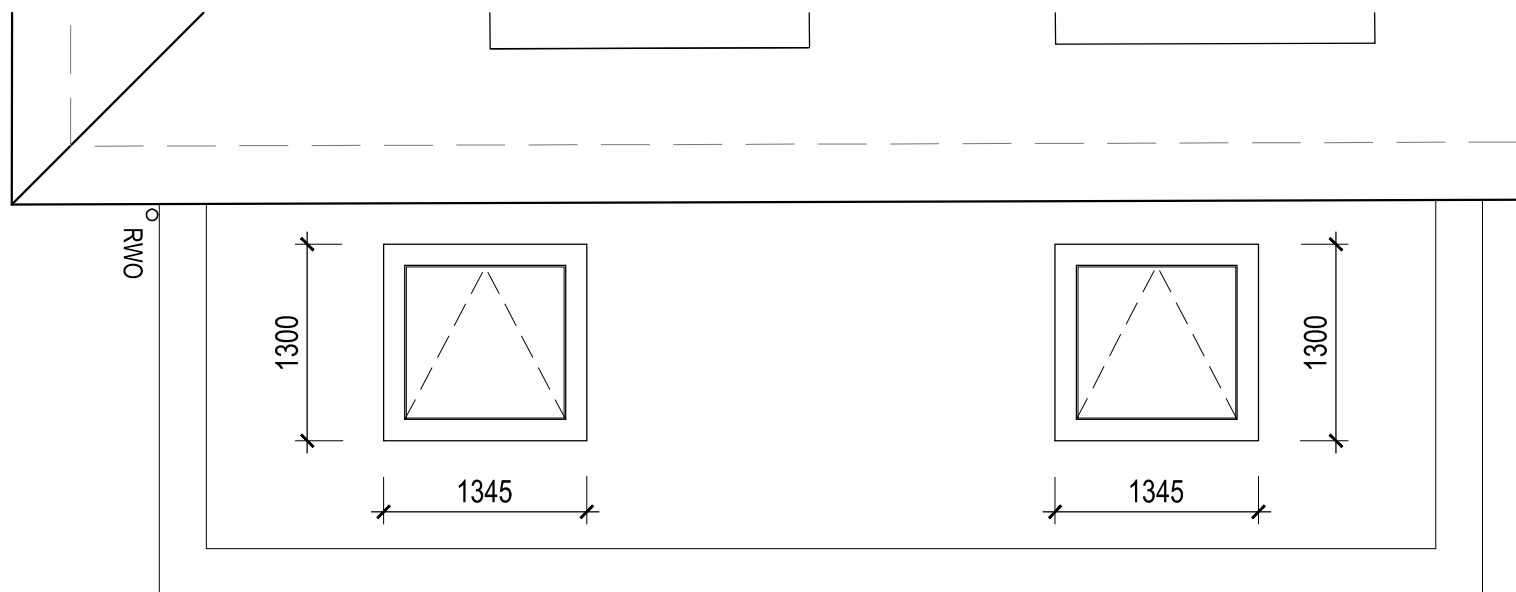
Project
34 Glenilla Road
Belsize Park London

Drawing
Location Plan

Scale
 1:1250 @ A3

Project No.	Drawing No.	Revision
189	100	01

Status	Date	Drawn by	Checked by
Planning	Jun21	CL	RM



Roof plan of extension 1:50



Issued to Camden Council
for clearing Condition no.5 on
Planning Consent ref. number:
2020/2412/P

Rev	Date	Description	Drawn	Checked

Do not scale from this drawing
All dimensions are to be checked on site
Any discrepancies are to be reported immediately to the Architect
or Main Contractor

COPYRIGHT © 2021
ALL RIGHTS DESCRIBED IN THE CHAPTER IV OF THE COPYRIGHT
DESIGN AND PATENTS ACT 1988, HAVE BEEN GENERALLY ASSERTED

Richard Morton Architects Ltd
The Bungalow, Home Yard, Hatfield House, AL9 5NF
Tel: 0203 179 9030
Email: richard@rm-architects.com
Web: www.rm-architects.com

Client
**So & Co. Building Services
For Mrs Candy Wong**

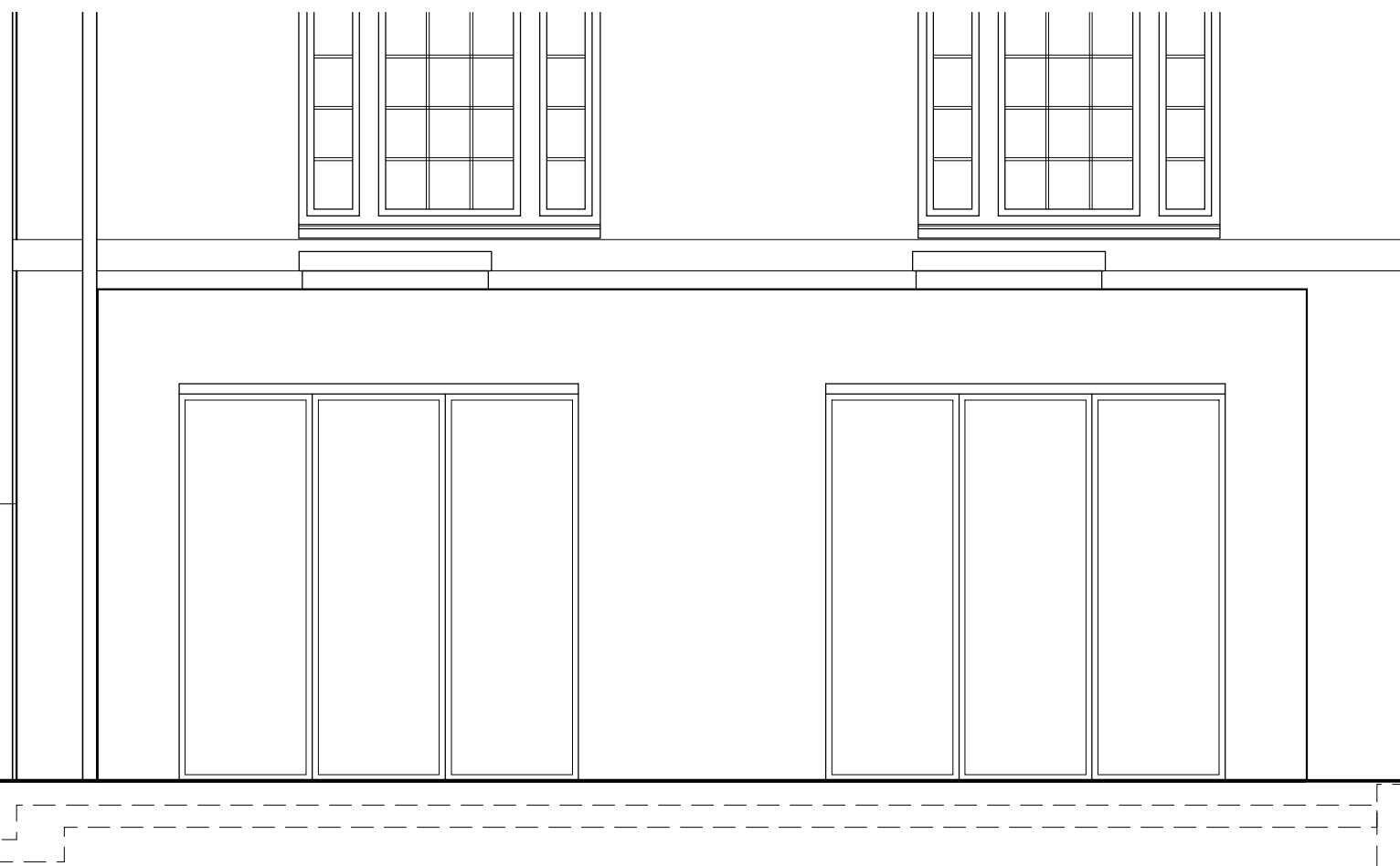
Project
**34 Glenilla Road
Belsize Park London**

Drawing
**New Rear Extension
Sliding Rooflight**

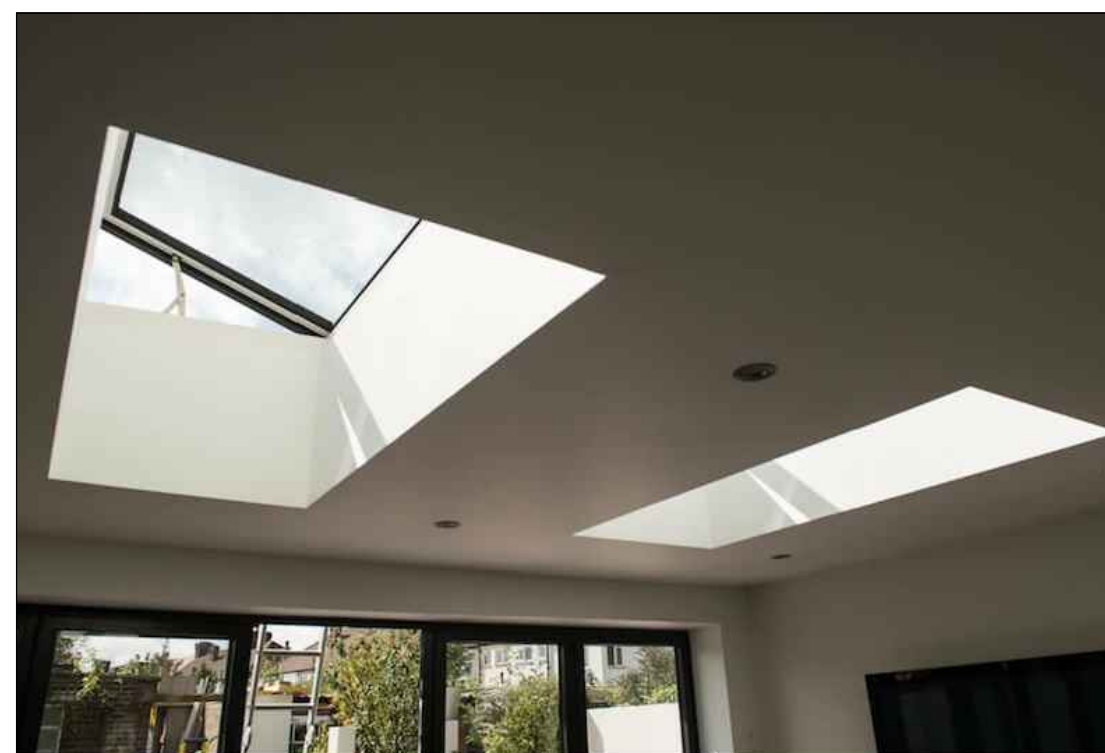
Scale
1:50 @ A3

Project No.	Drawing No.	Revision
189	120	

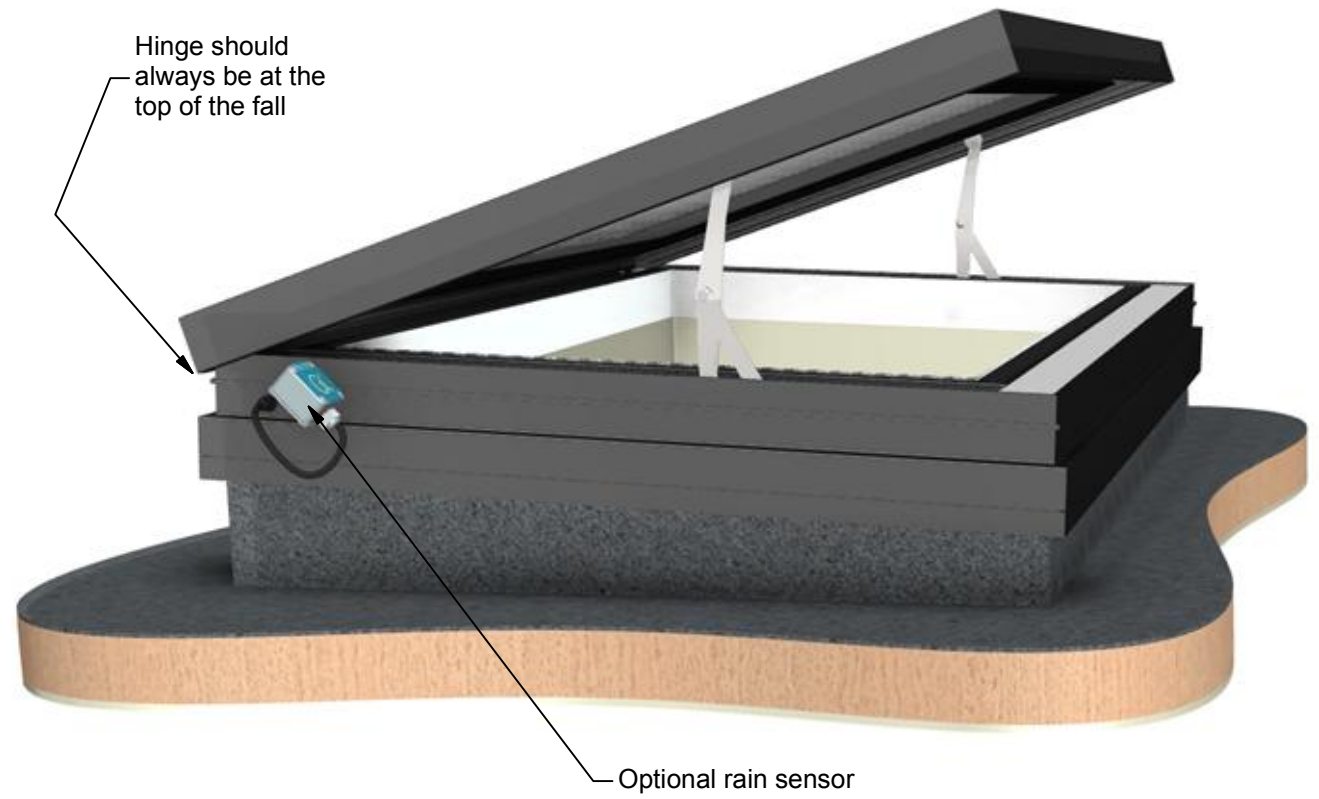
Status	Date	Drawn by	Checked by
Prelim	May21	CL	RM



Elevation 1:50



GV STANDARD VISIONVENT
 ELECTRONICALLY CONTROLLED HINGED ROOFLIGHT
 DESIGN PATENTED: GB2414119

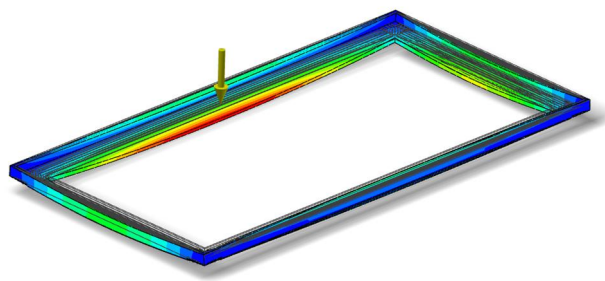
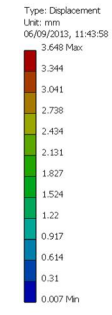


Mechanism detail view

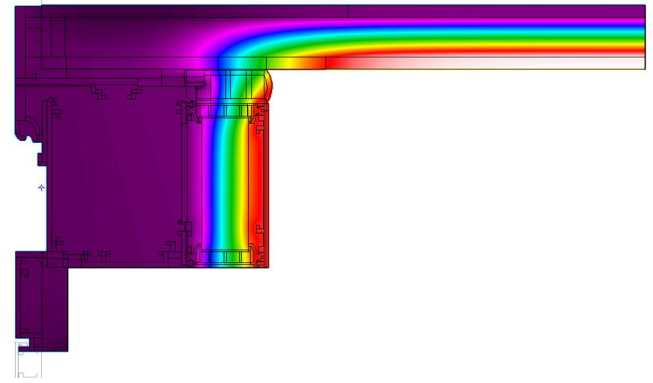


Concealed electro-mechanical opening mechanism. Side mounted synchronised pair allow unobstructed views through the leading edge as well as security for the lid

FEA MODELLED FOR STRUCTURAL INTEGRITY



THERMALLY MODELLED FOR INDUSTRY LEADING EFFICIENCY



REQUIRES WEATHERED KERB (NOT SUPPLIED)
 REFER TO DRAWING: 401-ASS-401

GLAZING VISION
 Saw Mills Road
 Diss Norfolk IP22 4RG
 Tel: +44 (0)333 8000 881
 Fax: +44 (0)333 8000 882
 Email: sales@glazingvision.co.uk
 Website: www.glazingvision.co.uk

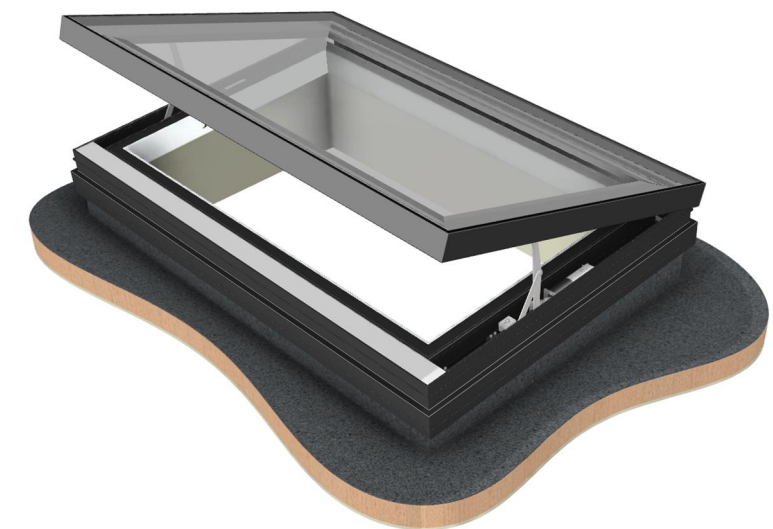
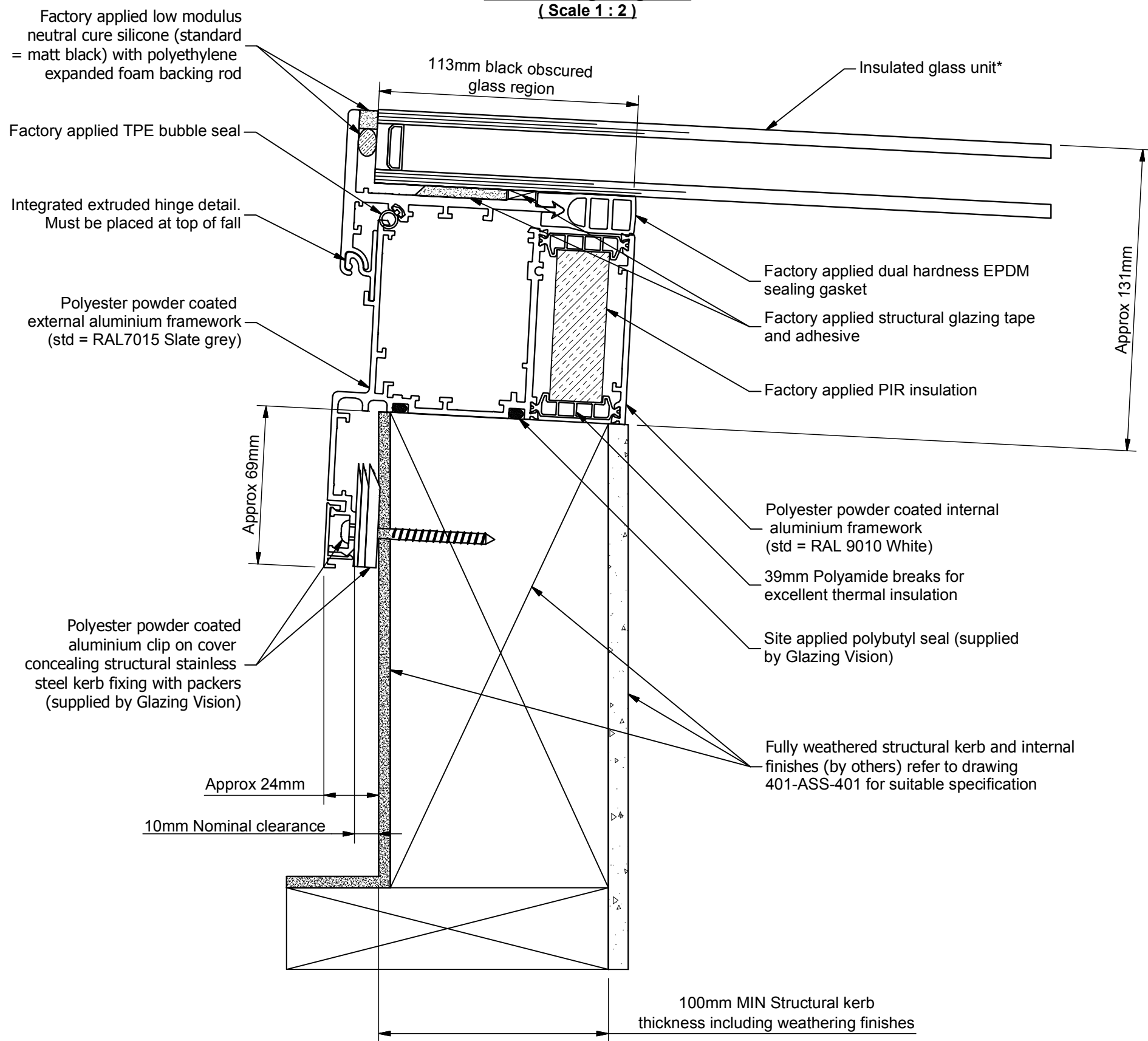
IT IS GLAZING VISION'S POLICY TO CONTINUOUSLY DEVELOP AND IMPROVE OUR PRODUCTS. WE THEREFORE RESERVE THE RIGHT TO MODIFY OR CHANGE THE DETAIL DESIGN AT OUR DISCRETION AND WITHOUT PRIOR NOTICE. THIS DRAWING IS COPYRIGHT AND THE SOLE PROPERTY OF GLAZING VISION LTD. THE DESIGNS/INFORMATION IT CONTAINS ARE PRIVATE AND CONFIDENTIAL. IT MUST NOT BE COPIED, EXHIBITED OR COMMUNICATED TO THIRD PARTIES FOR ANY PURPOSE OTHER THAN THAT FOR WHICH IT WAS ISSUED WITHOUT THE WRITTEN PERMISSION OF GLAZING VISION LTD.

Third angle projection unless otherwise noted.
 Tolerances:
 Whole numbers = ±1mm
 One decimal place = ±0.5mm
 Two decimal places = ±0.2mm
 All angles 90±0.5 degrees unless specified
IF IN DOUBT - ASK! DO NOT SCALE
Supplier to deburr & remove sharp corners

Rev	Revision Description	Drawn/Date
B	Patent no. added	JSL 10.10.16
A	Amended kerb reference drawing to 401	JamesB 18.02.14

Product: 401 - GV Standard VisionVent		Checked By: JWL
Description: General arrangement		
Materials: N/A	Drawn By: JamesB	Check Date: 10.10.16
Finish: N/A	Drawn Date: 09.12.13	
Weight:	Drawing No: 401-ASS-400	
Quantity: N/A		
Scale: N/A		

**Section through hinge side
(Scale 1 : 2)**



- Synchronised electro-mechanical opening mechanisms offering clear front opening
- Intelligent controls allow vent to be stopped in any position
- Optional items such as rain sensor and remote controls add additional functionality
- VisionVents can be specified to integrate with your building management system (BMS)
- VisionVents are available in many variants including integrated and manual versions
- Optional finishes can be specified from the full RAL colour range
- Low voltage power supply as standard with the option of battery backed operation

*Specification dependant on client options and glazing area
Design patented: GB2514119

<p>GLAZING VISION</p> <p>Saw Mills Road Diss Norfolk IP22 4RG</p> <p>Tel: +44 (0)333 8000 881 Fax: +44 (0)333 8000 882 Email: sales@glazingvision.co.uk Website: www.glazingvision.co.uk</p>	<p>IT IS GLAZING VISION'S POLICY TO CONTINUOUSLY DEVELOP AND IMPROVE OUR PRODUCTS. WE THEREFORE RESERVE THE RIGHT TO MODIFY OR CHANGE THE DETAIL DESIGN AT OUR DISCRETION AND WITHOUT PRIOR NOTICE. THIS DRAWING IS COPYRIGHT AND THE SOLE PROPERTY OF GLAZING VISION LTD. THE DESIGNS/INFORMATION IT CONTAINS ARE PRIVATE AND CONFIDENTIAL. IT MUST NOT BE COPIED, EXHIBITED OR COMMUNICATED TO THIRD PARTIES FOR ANY PURPOSE OTHER THAN THAT FOR WHICH IT WAS ISSUED WITHOUT THE WRITTEN PERMISSION OF GLAZING VISION LTD.</p>	<p>Third angle projection unless otherwise noted. Tolerances: Whole numbers = ±1mm One decimal place = ±0.5mm Two decimal places = ±0.2mm All angles 90±0.5 degrees unless specified IF IN DOUBT - ASK! DO NOT SCALE Supplier to deburr & remove sharp corners</p>	Rev	Revision Description	Drawn/Date	Product: 401 - GV Standard VisionVent	Checked By:
			-	Initial release	JamesB 20.05.14	Description: Solo electric vent only	JWL
			A	Patent no. added	JSL 10.10.16	Materials: N/A Finish: Std=RAL7015 / RAL9010 Weight: N/A Quantity: N/A Scale: As above	Check Date: 10.10.16
						Drawn By: JamesB Drawn Date: 20.05.14 Drawing No: 401-ASS-418	