

**KEY**

New walls

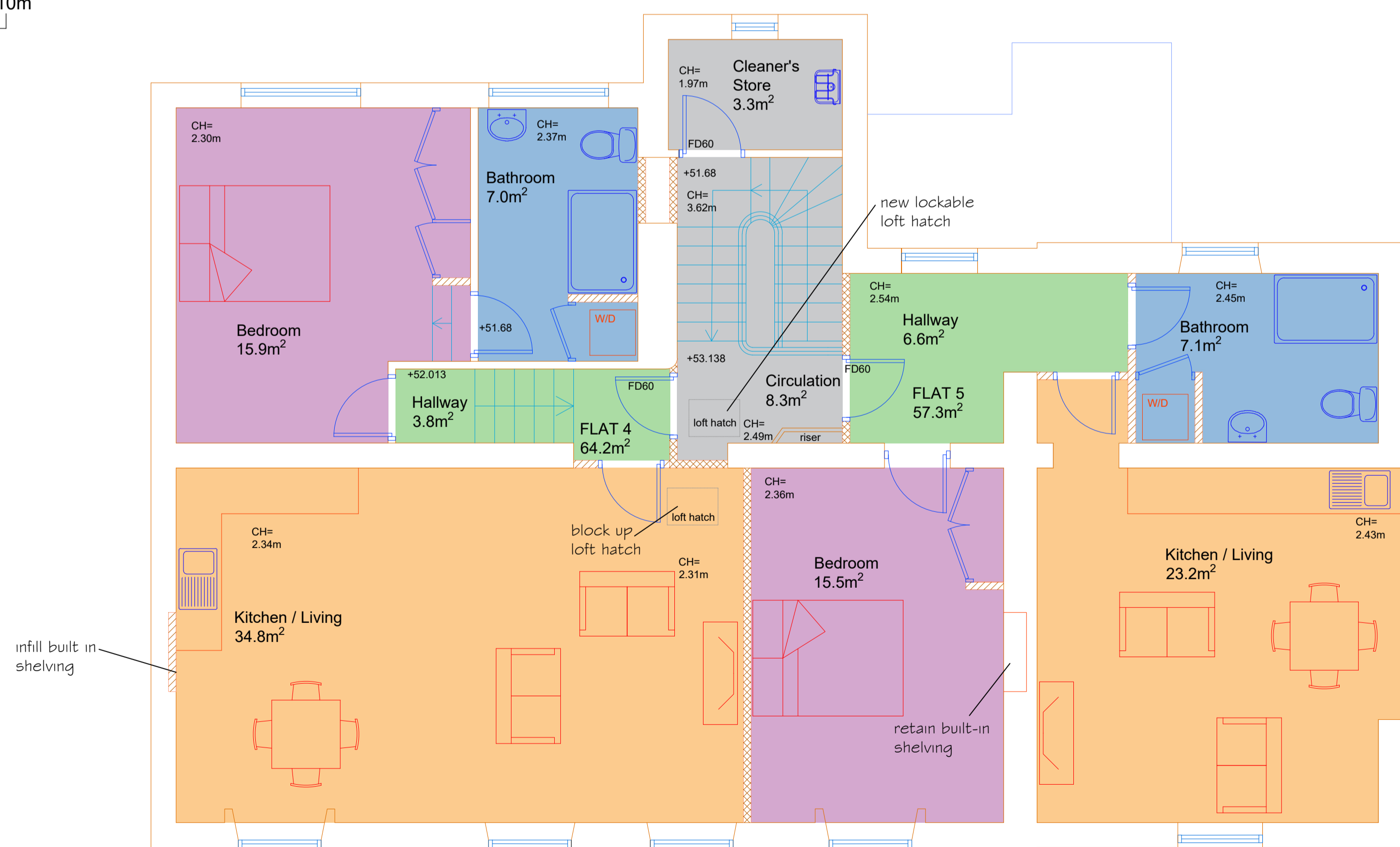
FLAT 1:  
 77.3m<sup>2</sup>  
 1 bedroom  
 2 people

FLAT 2:  
 57.4m<sup>2</sup>  
 1 bedroom  
 2 people

FLAT 3:  
 62.6m<sup>2</sup>  
 1 bedroom  
 2 people

FLAT 4:  
 64.2m<sup>2</sup>  
 1 bedroom  
 2 people

FLAT 5:  
 57.3m<sup>2</sup>  
 1 bedroom  
 2 people



FIRST FLOOR

**Notes:**

1. Indicative furniture layouts shown.
2. All wardrobes to be built-in.

# PRELIMINARY

238 HAVERSTOCK HILL  
 BELSIZE PARK  
 LONDON  
 NW3 2AE

DIocese OF WESTMINSTER

FLOOR PLANS  
 AS PROPOSED

JUNE 2020

EJ

1:50 @ A1

LT/WH

3408/F02