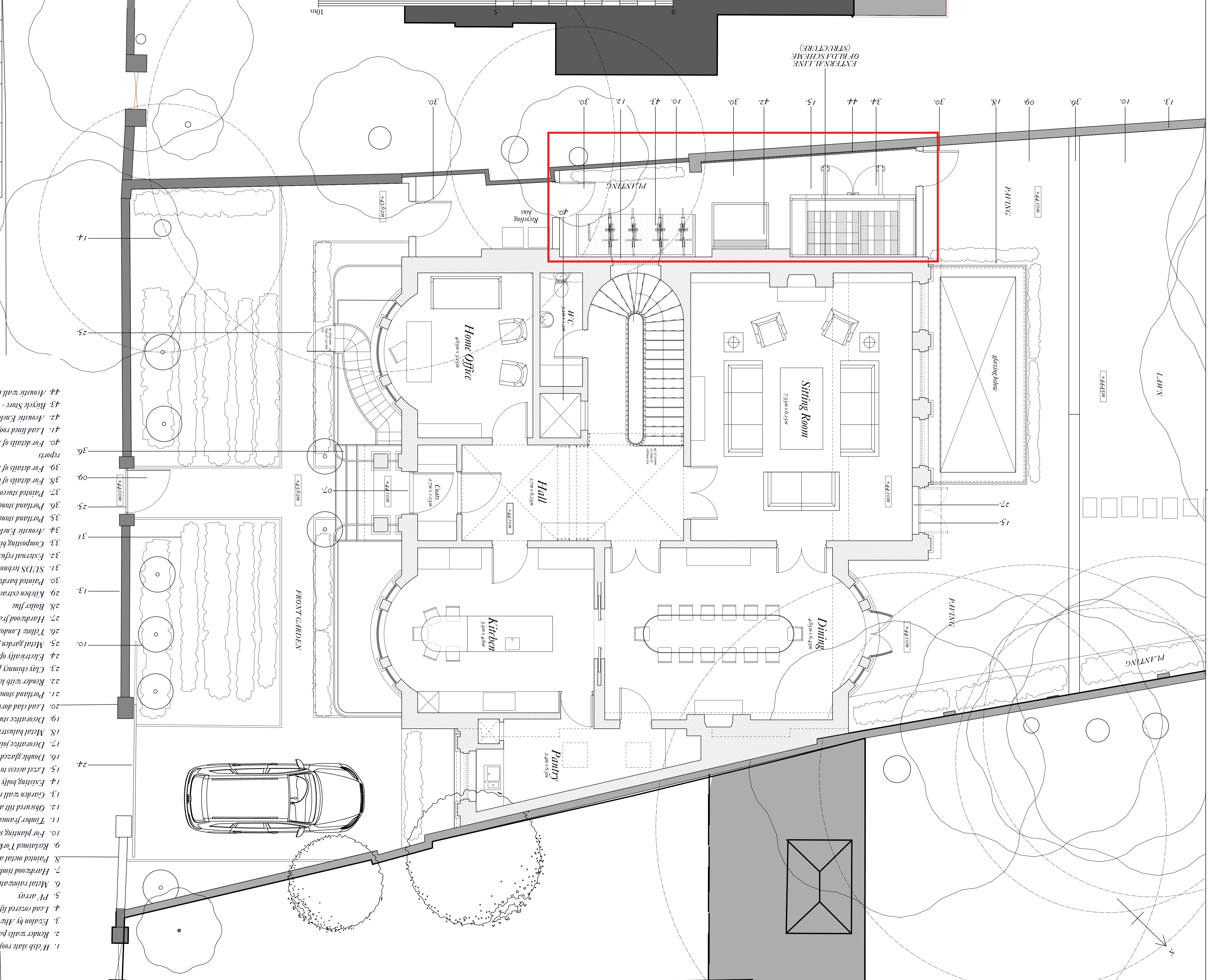


Ben Pentreath & Associates 49 Lambeth Conduit St, London WC1N 3NG, <i>mobile: 0207 430 2424 benpentreath.com</i>	
Project: NORFOLK ROAD CAMDEN	Title: PROPOSED GROUND FLOOR PLAN
Drawg. No.: 104	Rev. No.: E
Scale: 1:50@A1	Drawn by: AB
Date: 03.08.21	Checked by: BP
All designs © Ben Pentreath Ltd/Ben Pentreath & Associates 2014 Not to be reproduced without permission	



1. *Walslar* stair roof with lead flashing to parapet
2. *Render* walls painted off white
3. *Elevation* by *Alcega* - single ply membrane roof
4. *Lead* covered hip occurrin
5. *PV array*
6. *Metal* rainwater goods painted off white - Longbottom Ltd 4" downpipe
7. *Hardwood* timber door
8. *Painted* metal acoustic louvers
9. *Reclaimed* 1 or 2 stone open jointed pavers on suitable bed to permit free drainage
10. *For* planting see planting schedule
11. *Timber* framed with external lead cladding glazed rooflights
12. *Obscured* tilt and turn sills with painted finish to barrowwood frame
13. *Garden* wall repointed, repaired or replaced as necessary to match existing
14. *Existing* holly tree retained
15. *Level* access to dwelling for Lifetime Homes standards
16. *Double* glazed painted finished barrowwood sash windows
17. *Decorative* jointing to stone to detail
18. *Metal* balustrade painted with metal based glass paint
19. *Decorative* stone corning
20. *Lead* clad dormer windows checks - timber front face
21. *Portland* stone sill
22. *Render* with lead dressing parapet
23. *Clay* chimney pots - square base
24. *Electrically* operated sliding gate. Metal gate to be painted
25. *Metal* garden gate painted with suitable metal glass paint
26. *Tilwe* London stock brick - to match others locally
27. *Hardwood* framed glazed door - painted
28. *Boiler* flue
29. *Kitchen* extract
30. *Painted* barrowwood timber gate
31. *SUDS* technology to front garden landscaping
32. *External* refuse in secure enclosure
33. *Composting* bins
34. *Acoustic* Enclosure
35. *Portland* stone coping
36. *Portland* stone steps
37. *Painted* stone windows surrounds
38. *For* details of below ground construction see Structural Engineer's reports
39. *For* details of soil and groundwater conditions see Structural Engineer's reports
40. *For* details of services see Services Engineer's reports
41. *Lead* lined roof to minimum falls
42. *Acoustic* Enclosure
43. *Bicycle* Store - Cycle boops with Lean-to over
44. *Acoustic* wall lining