

ROOF
▽ + 21.500m

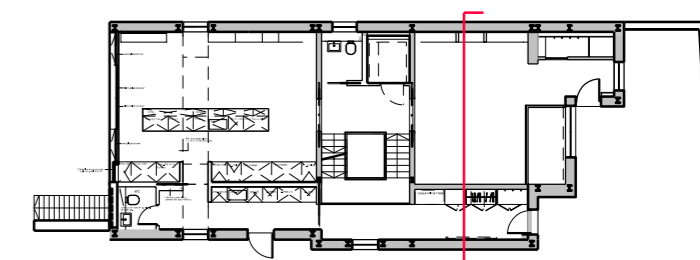
THIRD FLOOR FFL
▽ + 18.550m

SECOND FLOOR FFL
▽ + 15.700m

FIRST FLOOR FFL
▽ + 12.850m

GROUND FLOOR FFL
▽ + 10.000m

BASEMENT FFL
▽ + 7.150m



Key Plan

REV.	DATE	DESCRIPTION	REV.	DATE	DESCRIPTION
-	16.02.18	Issued for Planning			
A	03.05.18	Issued for Planning. Downers reduced.			
B	07.02.2020	Design updates for Planning Amendment as noted			
C	28.04.21	Issued for Planning			

NOTES:
 1. ALL DIMENSIONS IN MM UNLESS OTHERWISE STATED
 2. THIS DRAWING IS TO BE READ IN CONJUNCTION WITH ALL RELEVANT CONTRACT DOCUMENTS
 3. THIS DRAWING IS TO BE READ IN CONJUNCTION WITH ALL ENGINEER'S DRAWINGS
 4. DO NOT SCALE FROM THIS DRAWING
 5. REPORT ANY ERRORS, CONTRADICTIONS, & OMISSIONS TO THE ARCHITECT AS SOON AS POSSIBLE
 6. WHEN THIS DRAWINGS IS ISSUED IN DWG FORMAT IT IS AN UNCONTROLLED VERSION ISSUED TO ENABLE THE RECIPIENT TO PREPARE THEIR OWN DRAWINGS FOR WHICH THEY ARE SOLELY RESPONSIBLE. IT IS BASED ON BACKGROUND INFORMATION CURRENT AT TIME OF ISSUE.
 BEN ADAMS ARCHITECTS ACCEPTS NO LIABILITY FOR ANY SUCH ALTERATIONS OR ADDITIONS TO OR DISCREPANCIES ARISING OUT OF CHANGES TO SUCH BACKGROUND INFORMATION WHICH OCCUR AFTER IT IS ISSUED BY BEN ADAMS ARCHITECTS.

KEY:

Ben Adams Architects <small>Third Floor 79 Southbank Street London SE1 0UP</small> <small>T 020 7633 0000 ben@benadamsarchitects.co.uk info@benadamsarchitects.co.uk</small>	DRAWING NAME:	Proposed Section BB
	PROJECT NAME:	30 Glenilla Road
JOB NO: 17-058 SCALE: 1:100 @ A3 1:50 @ A1 STAGE: PLANNING	DRAWING NO:	PS01/C