

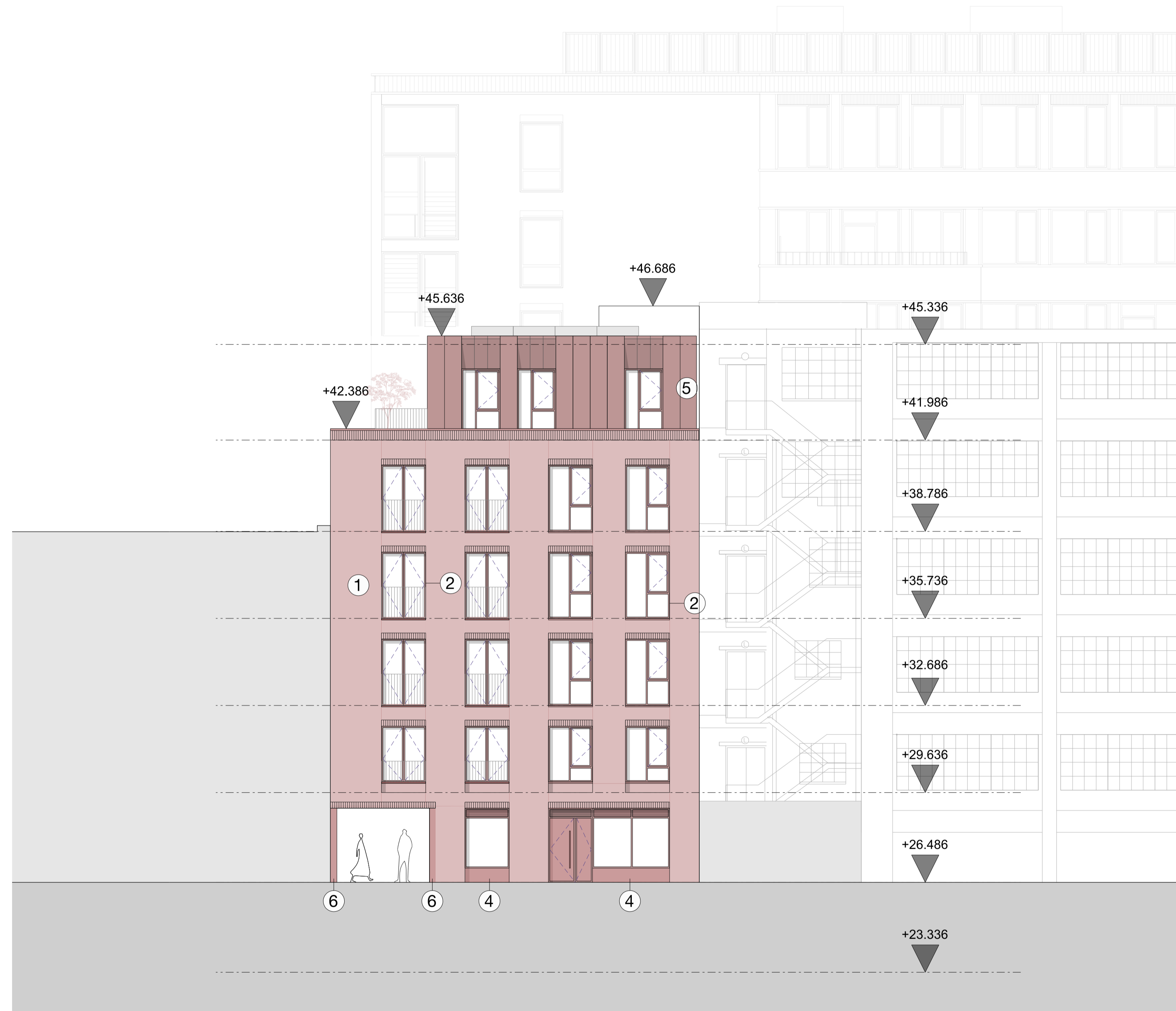
Notes
 This drawing is copyright Piercy&Company.
 Do not scale from this drawing.
 All dimensions and levels to be checked on site by the contractor and such dimensions to be his responsibility.
 Report all drawing errors, omissions and discrepancies to the architect.

DISCLAIMER
 This document may be issued in an editable digital CAD format to enable others to use it as background information to make alterations and/or additions. In that instance the file will be accompanied by a PDF version as a record of the original file. It is for those parties making such alterations and/or additions to ensure that they make use of current background information.

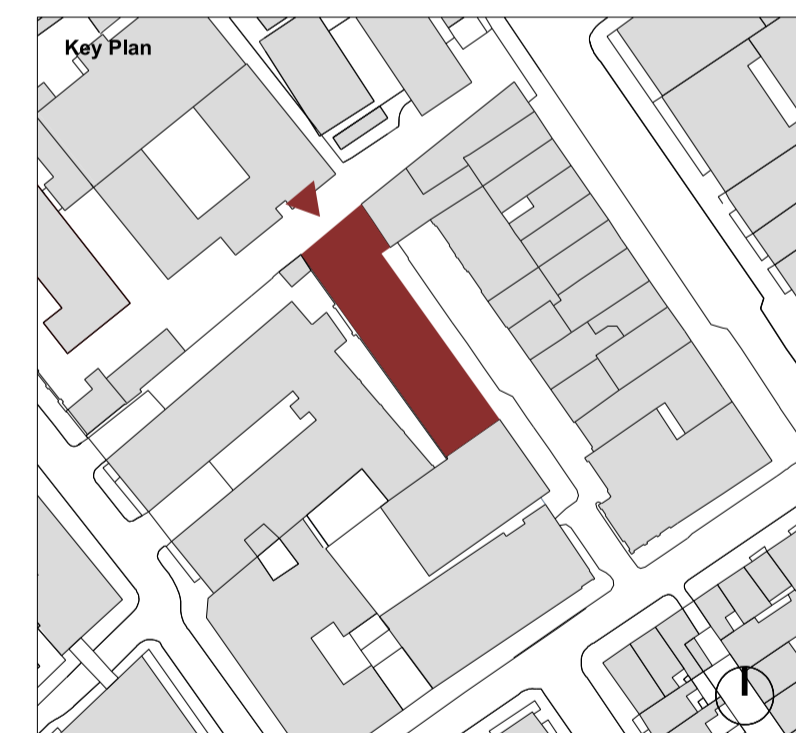
Piercy&Company accepts no liability for either: any such alterations and/or additions to the background information by others; or any other changes made by others to the architectural content of the background information itself.

Material Key:

- ① Warm tone of brick
- ② Red-toned window frames and handrail metalwork
- ③ Reconstituted cast stone detailing
- ④ Painted metal cladding
- ⑤ Warm-toned metal cladding
- ⑥ Glazed corner brick



| Rev | Date | Description |
|-----|----------|------------------|
| A | 21.05.21 | Planning updates |



| | | |
|------------------------|------------|------------|
| Project | | |
| 14 - 19 Tottenham Mews | | |
| Client | | |
| Derwent London | | |
| Date | Scale | |
| 24/11/20 | 1:100 @ A1 | 1:200 @ A3 |

North Elevation

| | | |
|-------|---------|----------|
| Drawn | Checked | Approved |
| KC | VP | ML |

| Drawing Status | | | | | |
|----------------|------------|-------|--------|--------|------|
| Planning | | | | | |
| Project | Discipline | Level | Series | Dwg No | Rev. |
| 13565 | A | LXX | 05 | 302 | A |

The Centro Building
 39 Plender Street
 London NW1 0DT
 Telephone
 +44 (0)2074249611
 info@piercyandco.com
 www.piercyandco.com