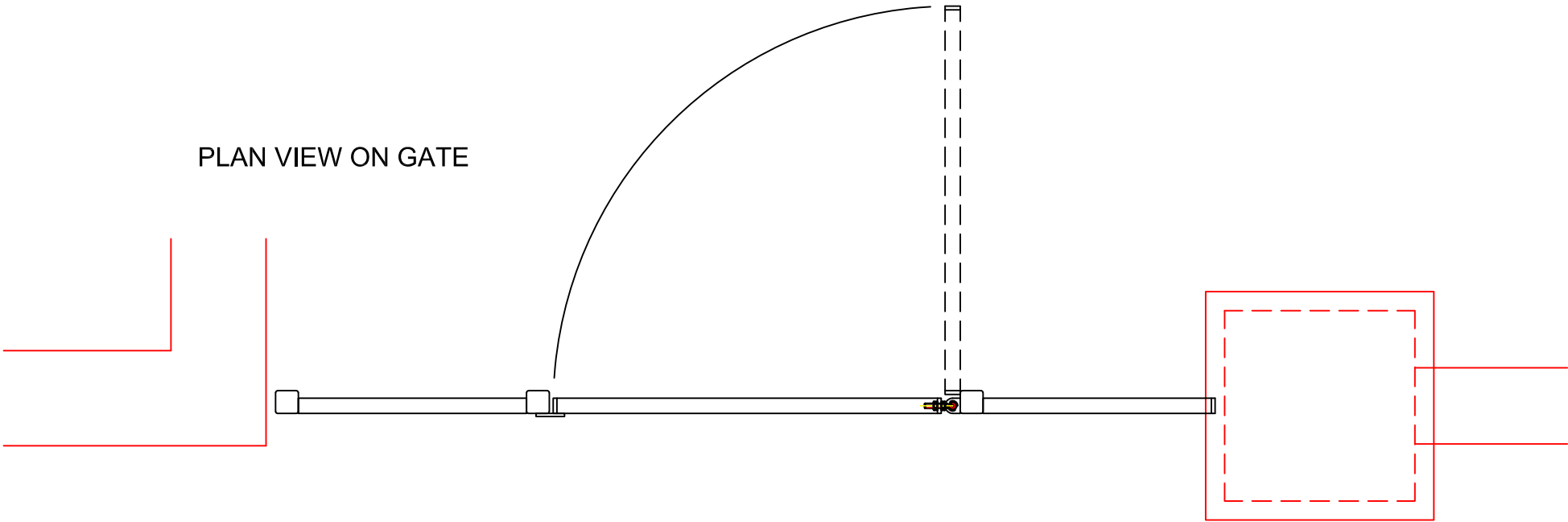
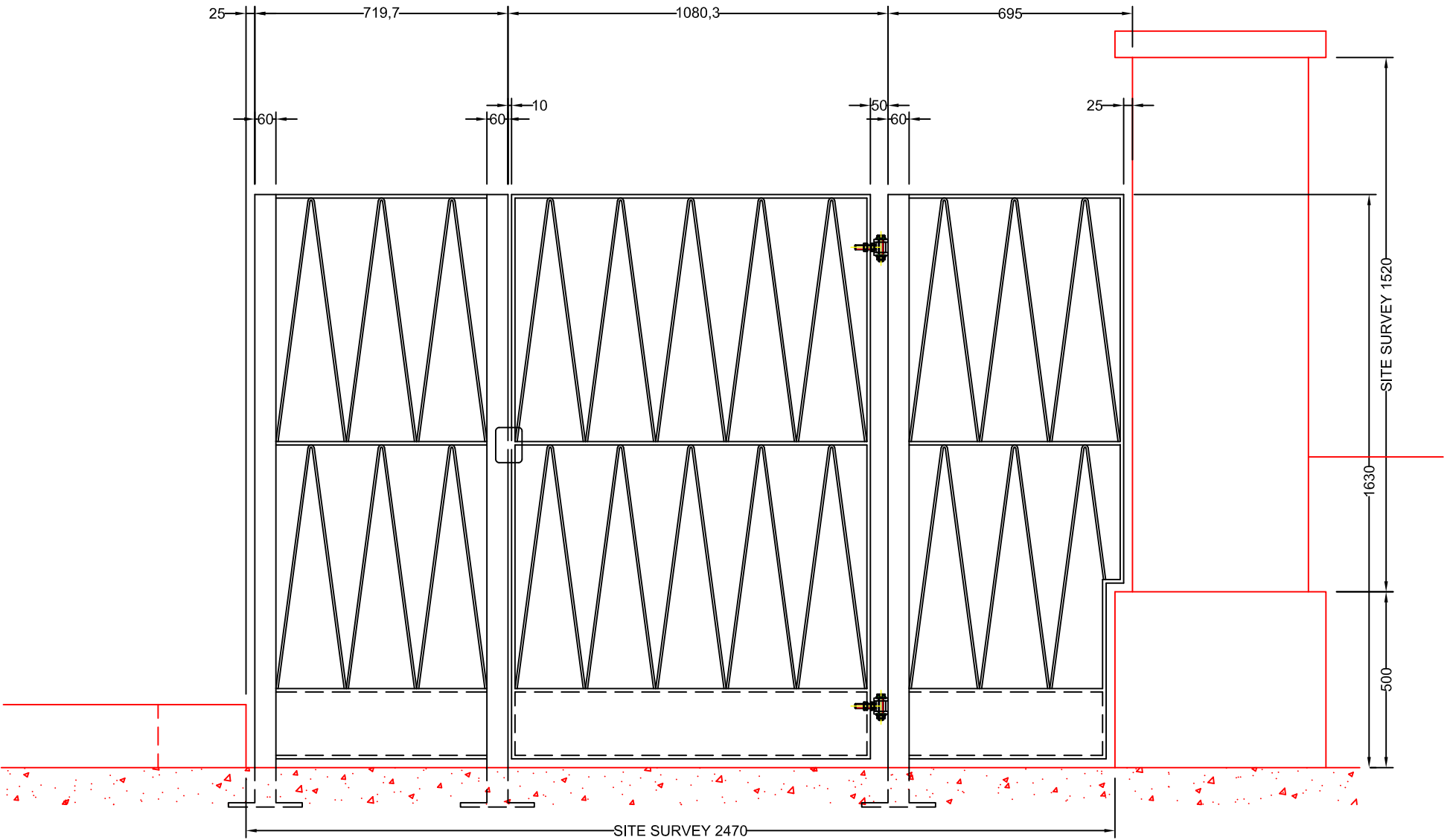


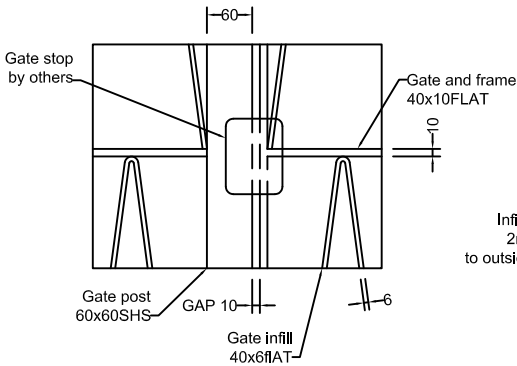
PLAN VIEW ON GATE



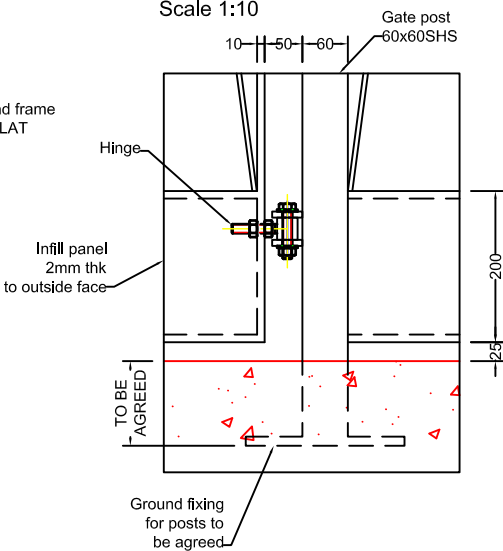
VIEW ON GATE FROM OUTSIDE



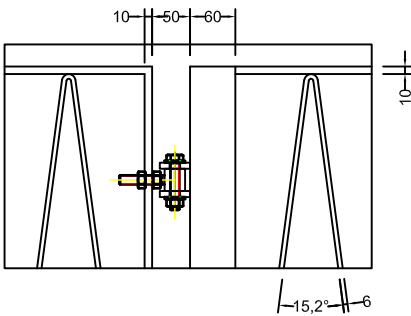
DETAIL OF GATE  
CLOSURE  
Scale 1:10



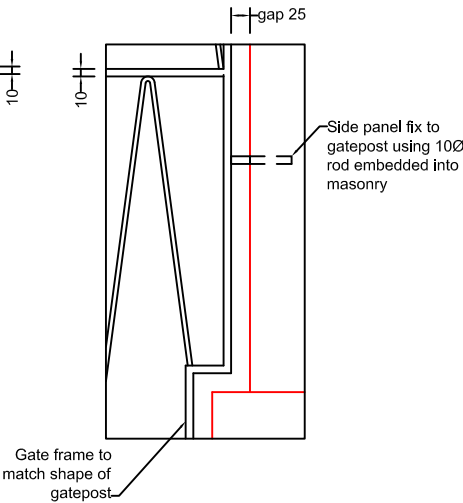
DETAIL OF GATE POST  
GROUND FIXING, HINGE  
AND LOWER PANEL  
Scale 1:10



DETAIL OF GATE POST  
TOP AND HINGE  
Scale 1:10



DETAIL OF GATE PANEL  
FIX TO MASONRY  
Scale 1:10



|       |     |              |          |
|-------|-----|--------------|----------|
|       |     |              |          |
|       |     |              |          |
|       |     |              |          |
|       |     |              |          |
| 1     | AWD | AS DRAWN     | 27-08-19 |
| ISSUE | BY  | MODIFICATION | DATE     |

|          |                         |      |          |
|----------|-------------------------|------|----------|
| Matl.    | MILD STEEL              |      |          |
| Finish   | PRIME FOR SITE PAINTING |      |          |
| Drawn by | AWD                     | Date | 27-08-19 |
| Chkd by  |                         | Date |          |

|          |                        |  |
|----------|------------------------|--|
| Title:   | ORCHARD GATE           |  |
| Project: | 2-4 PRIMROSE HILL ROAD |  |



|   |         |
|---|---------|
| 71b Westcote Road<br>London<br>SW16 6BN<br>United Kingdom |         |
| Scale   | 1:16@A3 |
| Sheet   | 1 of 1  |
| Issue   | 1       |