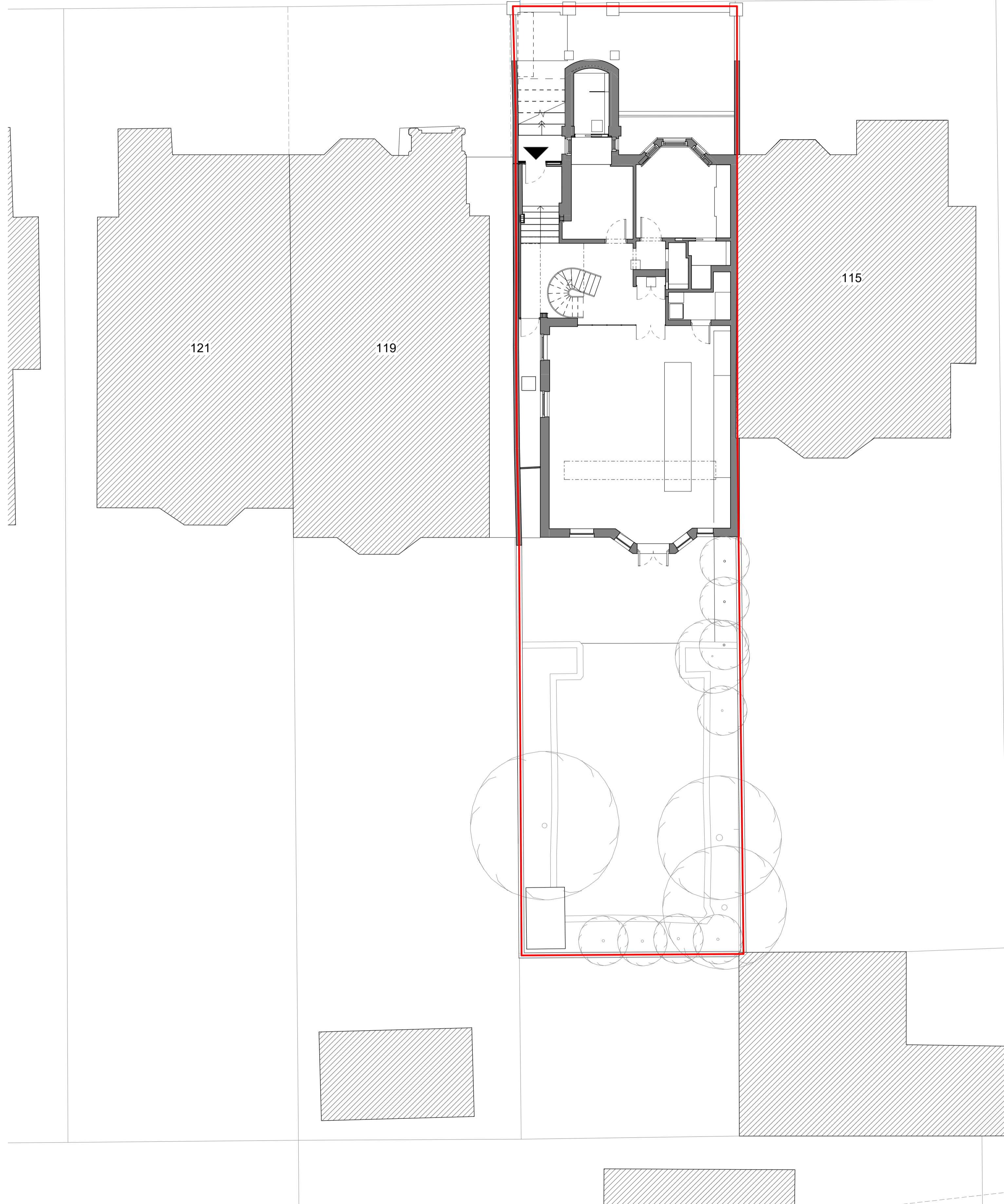


KING HENRY'S ROAD

117 King Henry's Road



LOWER MERTON RISE

PLANNING

The contractor must check dimensions on site. Only figured dimensions to be worked from.

Any discrepancies must be reported to the architect before proceeding.

NOTES:

This drawing is © copyright Platform 5 Architects Ltd.

Rev.	Date	Description	Checked
P2	25.05.21	Issued for Planning	MF
P1	10.05.21	Issued for Information	MF



Platform 5
architects

First Floor
217 Mare Street
London
E8 3QE

t 020 7031 5661
e info@platform5architects.com
w www.platform5architects.com

PROJECT TITLE
117 King Henry's Road

DRAWING TITLE
Proposed Site Plan

PROJECT NO.	DRAWING NO.	SCALE @ A1	SCALE @ A0	REVISION
21-105	050	1:100	1:200	P2