

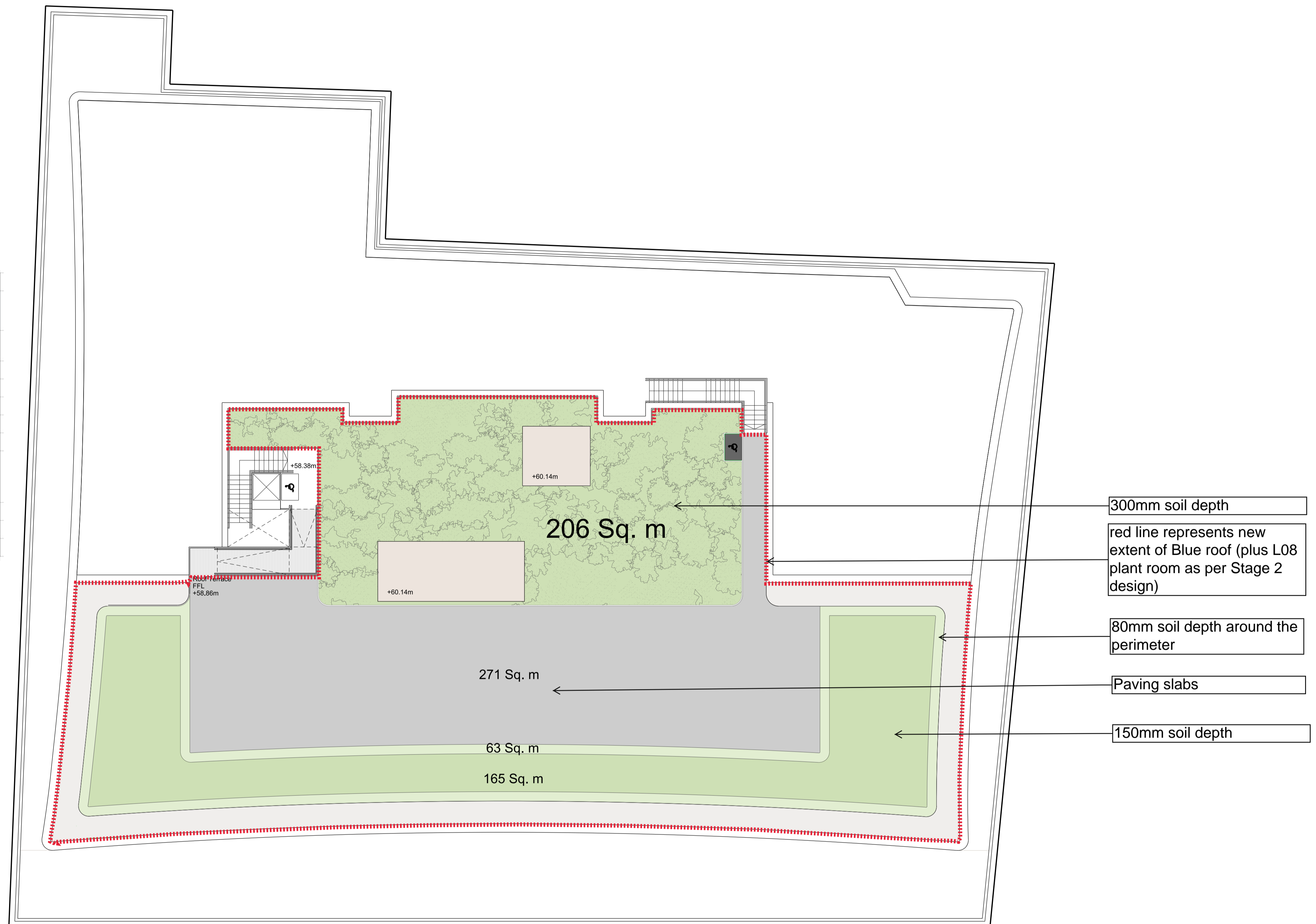
**Previous UGF:**  
w/ GF: 0.22

**Previous Blue roof area:**  
839 sqm total

REVISED PLUS GF	Extensive Green Roof - 80mm	Intensive Green Roof - 150mm	Intensive Green Roof - 300mm	Rain Garden / Soft Planting	Blue Roof - 100mm
UGF (Urban Greening Factor)	0.7	0.8	0.8	0.7	
Roof terrace	63.m <sup>2</sup>	165.m <sup>2</sup>	206.m <sup>2</sup>	.m <sup>2</sup>	795.m <sup>2</sup>
Level 08	147.1m <sup>2</sup>	.m <sup>2</sup>	.m <sup>2</sup>	.m <sup>2</sup>	633.m <sup>2</sup>
Level GRD	.m <sup>2</sup>	.m <sup>2</sup>	.m <sup>2</sup>	270.m <sup>2</sup>	
Totals	210.1	165	206	270	1428
Building Footprint (including pavement)	2617				
UGF	0.24				

**Revised UGF:**  
w/ GF: 0.24

**Revised Blue roof area:**  
1,428 sqm total



**LEVEL 09 TERRACE**