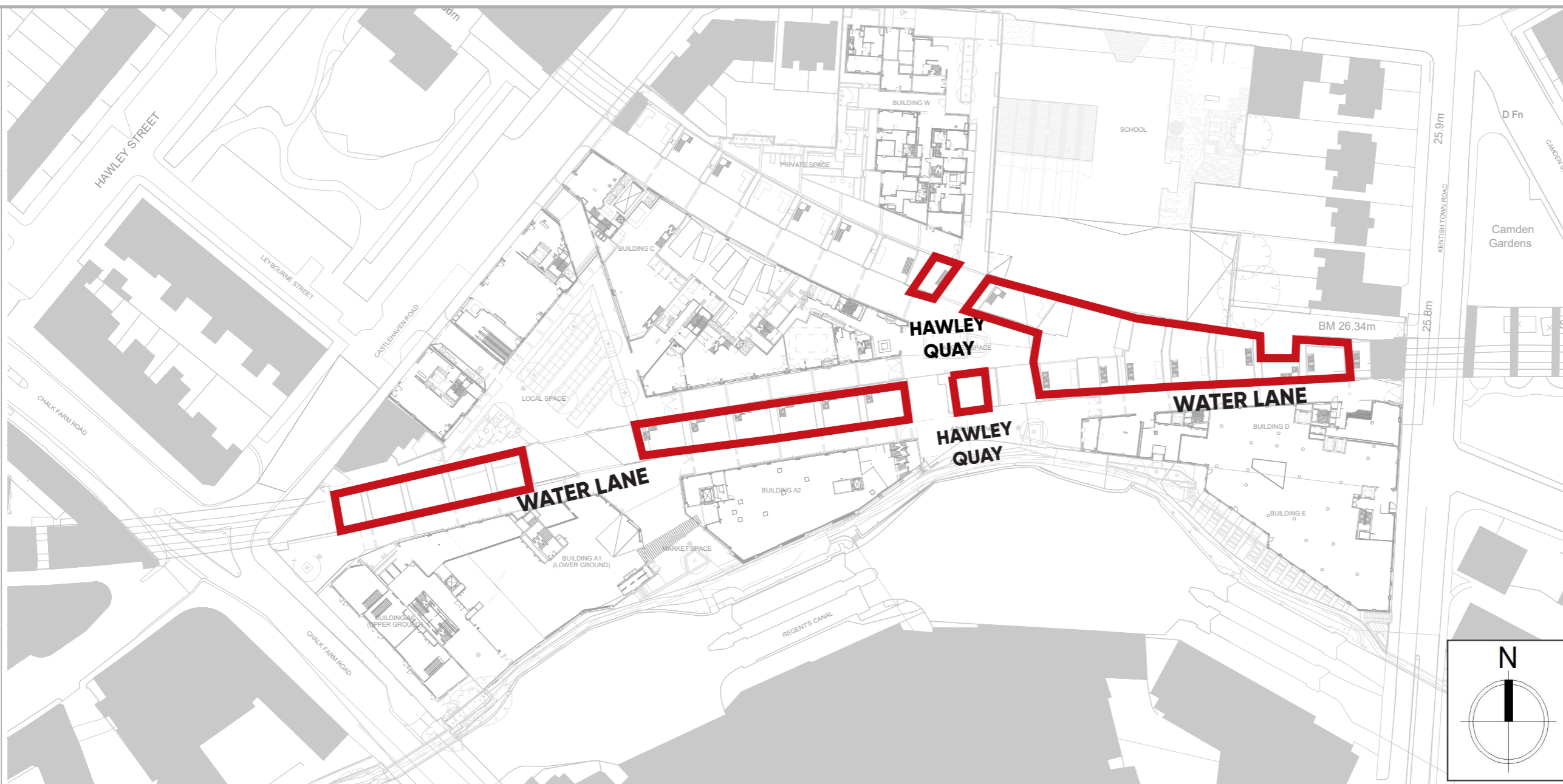
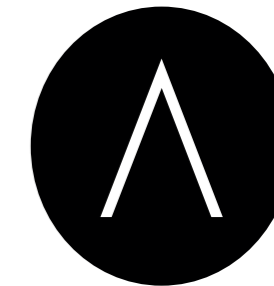


MASTERPLAN ARCHES



NOTES |
Drawing shows arches within Hawley Wharf Masterplan and highlights the main areas where music will be played

 AREA 2.050 smq circa

sc. 1:500 @A1 / 1:1000 @ A3

MASTERPLAN_ ARCHES SPEAKERS LOCATION

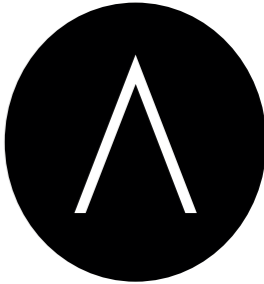
This document has been prepared to support a planning application for the installation of n.34 speakers onto the façades of the retail arches at fascia level with the Hawley Wharf masterplan development (planning permission 2012/4628/P)

in response to comments from Camden to a previous application at the site for the same speakers (ref. 2020/1637/P), the speakers will only be used for health & safety and emergency announcements only .

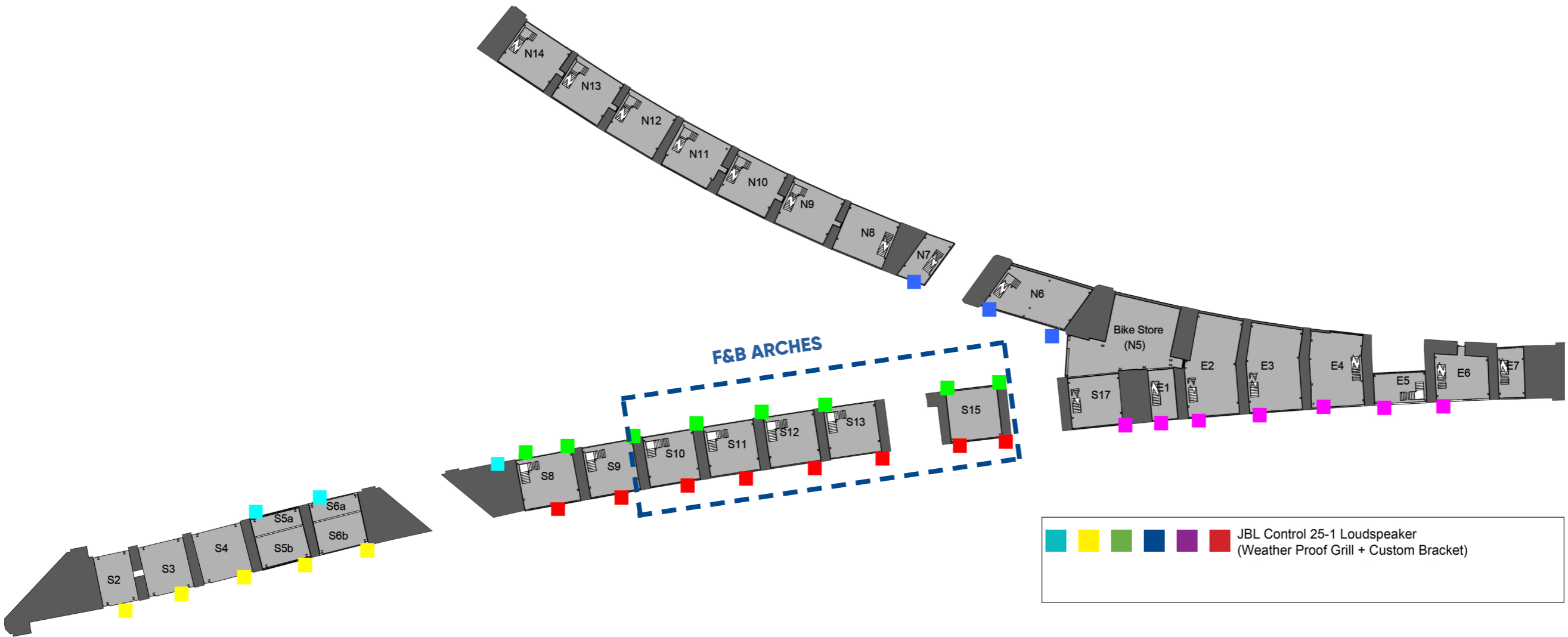
They have been chosen for their durability, simple look and resistance to the weather. Speaker system (number of speakers proposed 34) will be entirely controlled by the Landlord, managed through a centralized system in Camden Market.

The noise levels will stay below 80 dB.

Refer to Scotch & Partners " Noise assessment of arches speakers - RevA"



NOTES |



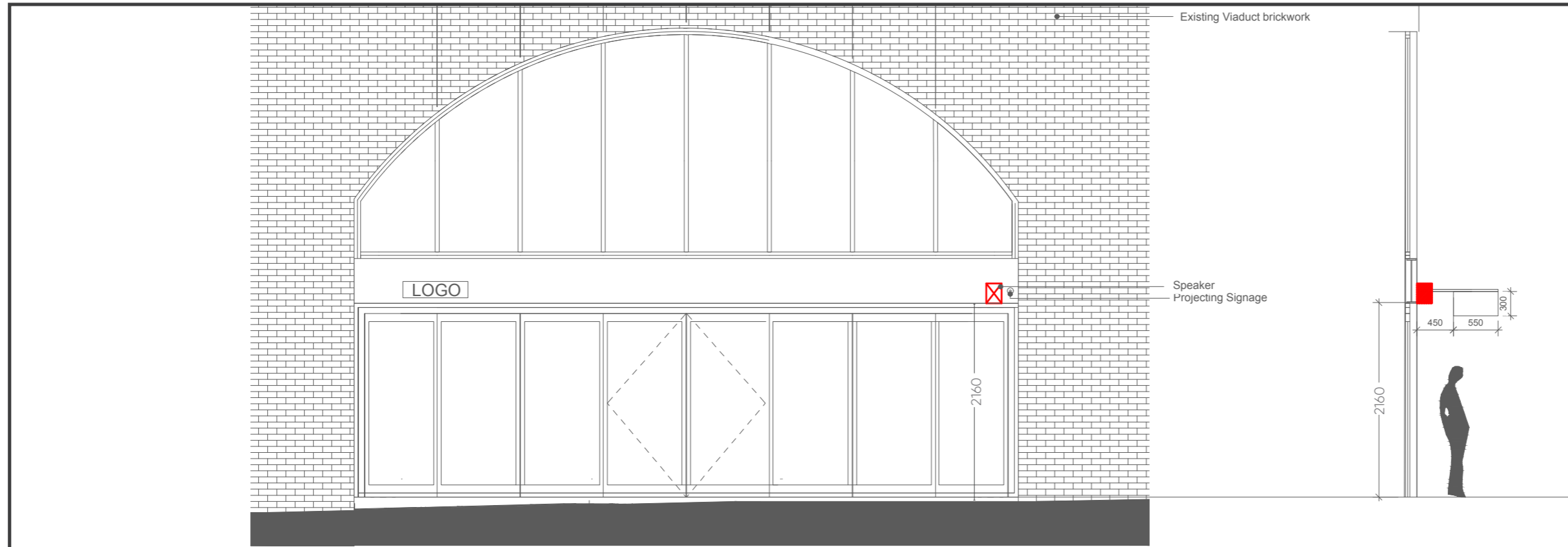
TYPICAL ELEVATIONS

Simple in their design and black in colour, speakers are discreet in size (dimensions (H x W x D) 243 x 188 x 145 mm; 203 mm deep total when mounted on InvisiBall wall-mount bracket).

Speakers are integrated into the arch fascia so to not interfere with the signage (*), mounted on the fascia, 200 mm from the edge of it.



NOTES |



TYPICAL **RETAIL UNIT** FRONT ELEVATION (Shopfront strategy under condition 21 of planning permission 2012/4628/P , approved on 13 February 2020)



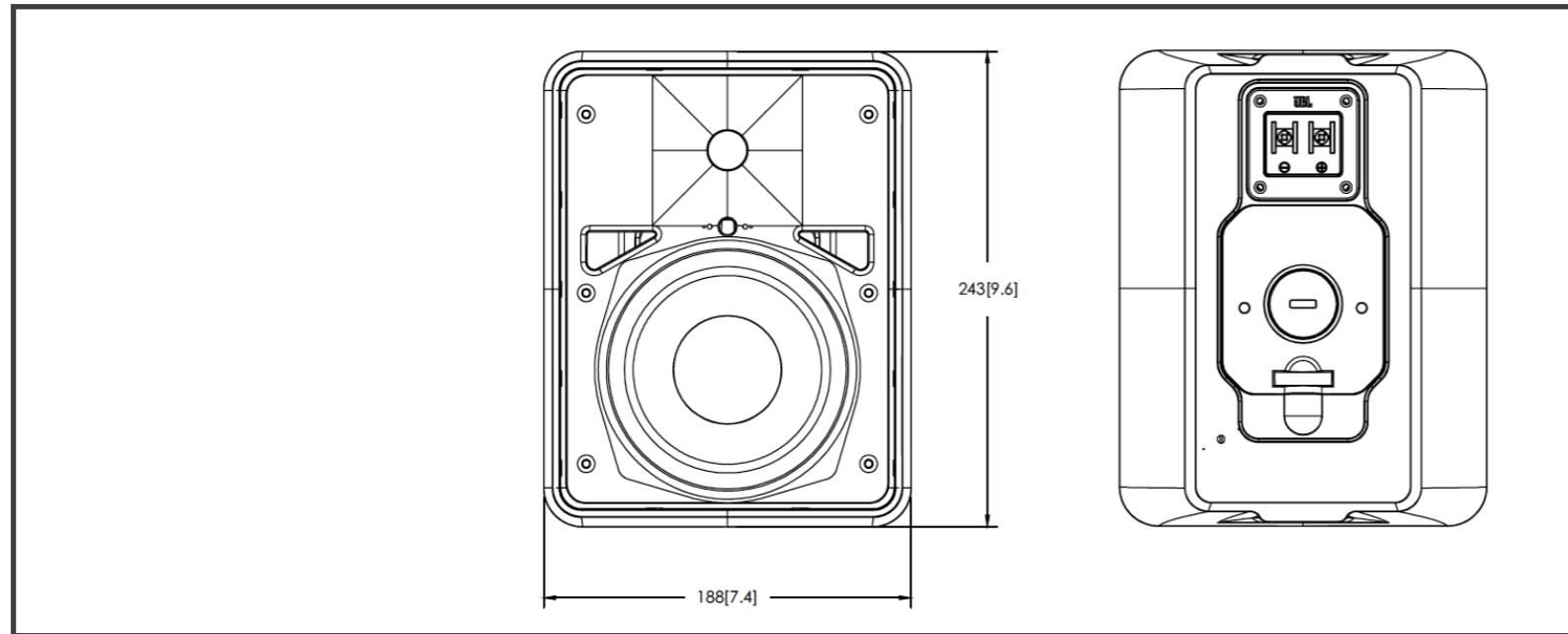
TYPICAL **F&B UNIT** FRONT ELEVATION (S 15 arch with 2 fascia mounted speakers) (Shopfront strategy under condition 21 of planning permission 2012/4628/P , approved on 13 February 2020)

ALL DIMENSIONS ARE IN mm

"JBL THE CONTROL 25-1" SPEAKERS DETAILS



SPEAKER SPECS AND DIMENSIONS - dimensions are in millimetres-



NOTES |

