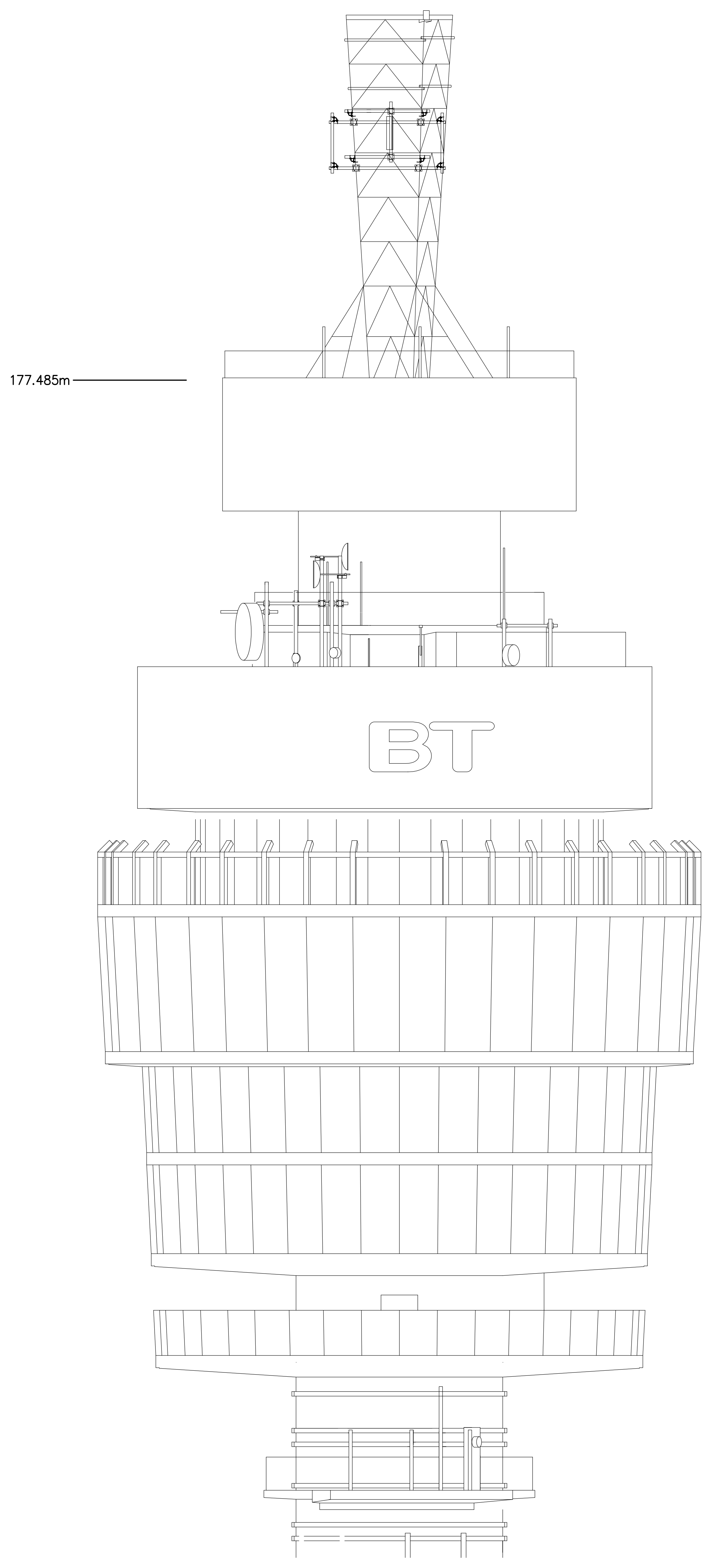
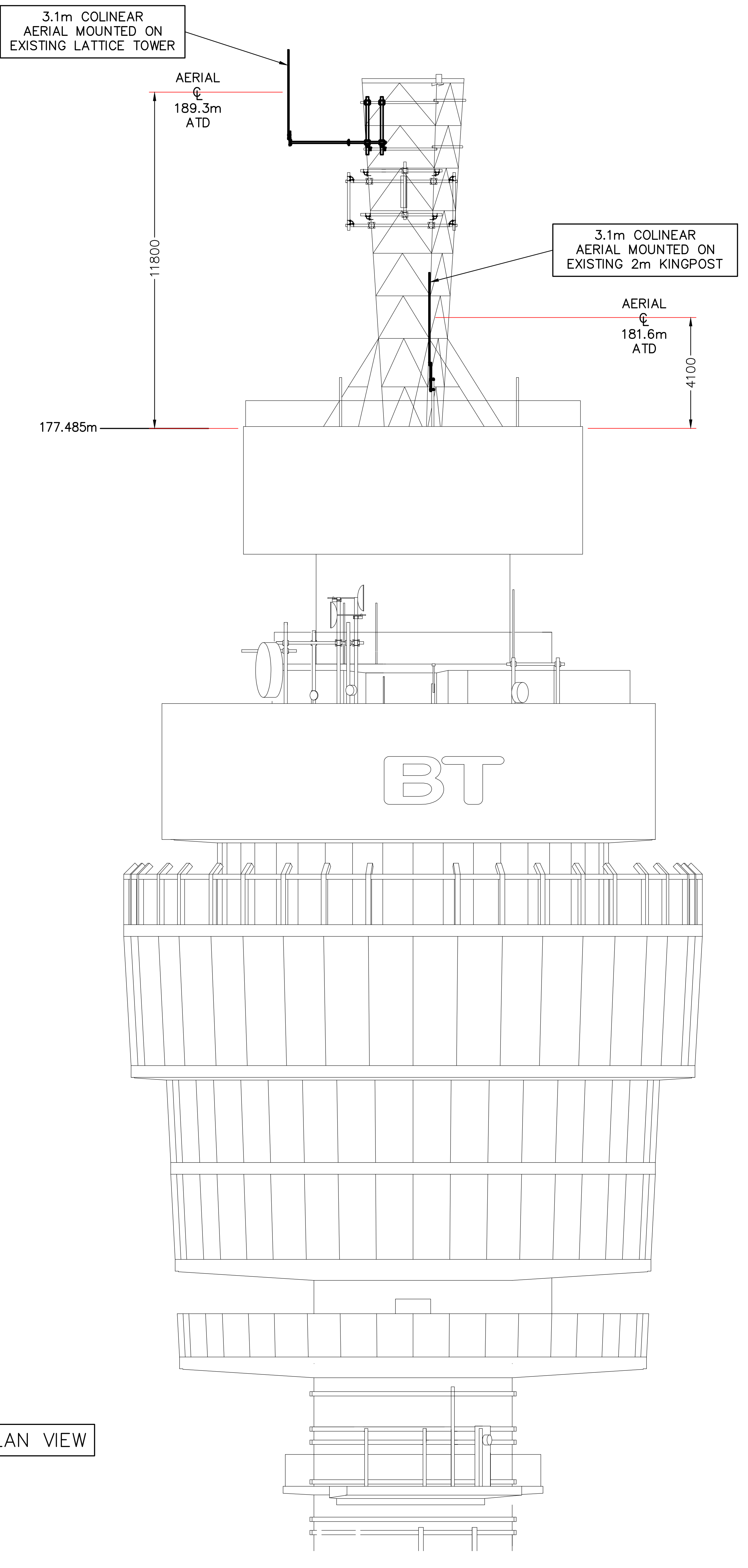


ELEVATION VIEW OF TOWER
FACING NORTH
SCALE 1:300



ENLARGED PART ELEVATION VIEW OF TOWER FACING SOUTH
SHOWING EXISTING AERIALS
SCALE 1:75



ENLARGED PART ELEVATION VIEW OF TOWER FACING SOUTH
SHOWING PROPOSED COLINEAR AERIALS
SCALE 1:75

SEE SHEET 4 FOR PLAN VIEW

DIMENSIONS IN mm UNLESS OTHERWISE STATED © British Telecommunications plc 2021 DO NOT SCALE ORIGINAL SCALE 1:75, 1:300

DRN CH
CKD LW
CERTIFICATION DESIGNER
CLIENT
L. LAWSON
DATE 05/05/21

All OS maps reproduced by permission of Ordnance Survey (c) Crown Copyright 2013. All rights reserved BT Licence Number 100028040

MATERIAL		A	LONDON TELECOM TOWER PLANNING PROPOSAL FOR INSTALLATION OF 2 x COLINEARS AT LEVEL T40 & 1 x 0.3m DIA DISH AT LEVEL T37	REFERENCES
FINISH				
AMENDMENT		ISSUE	BT NETWORKS	BT RSDO WL 4006153 SHT 02 of 05