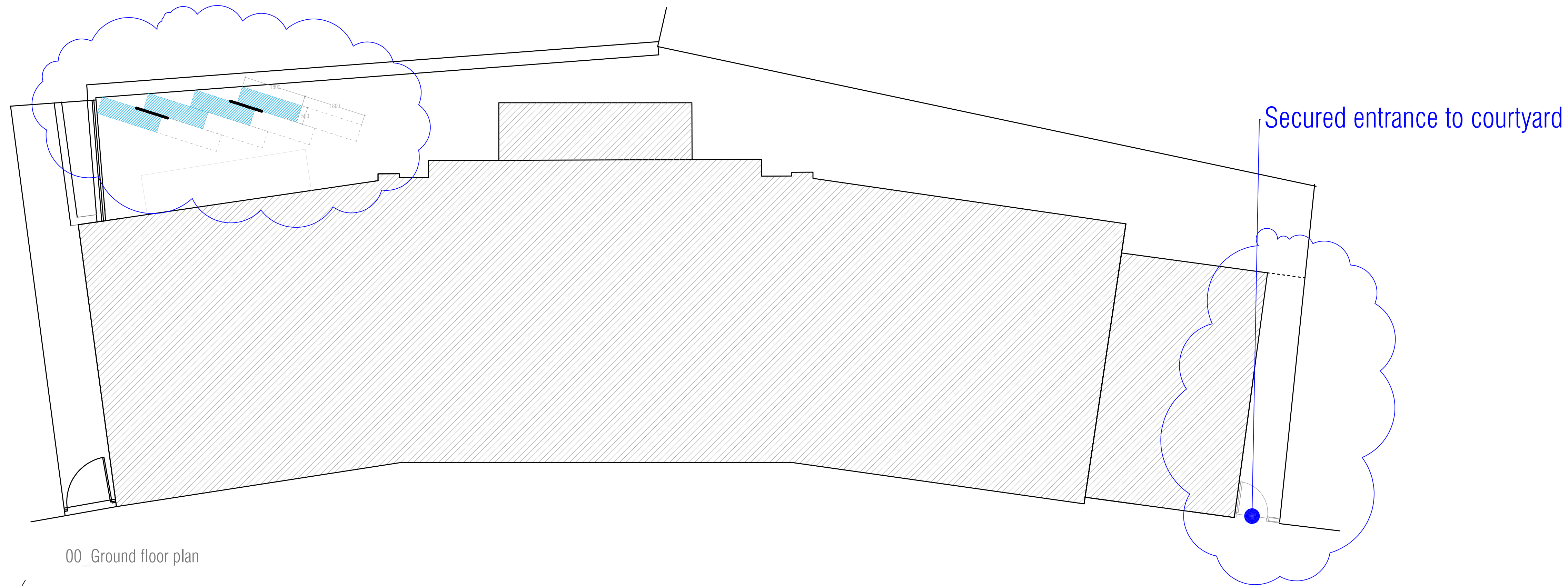
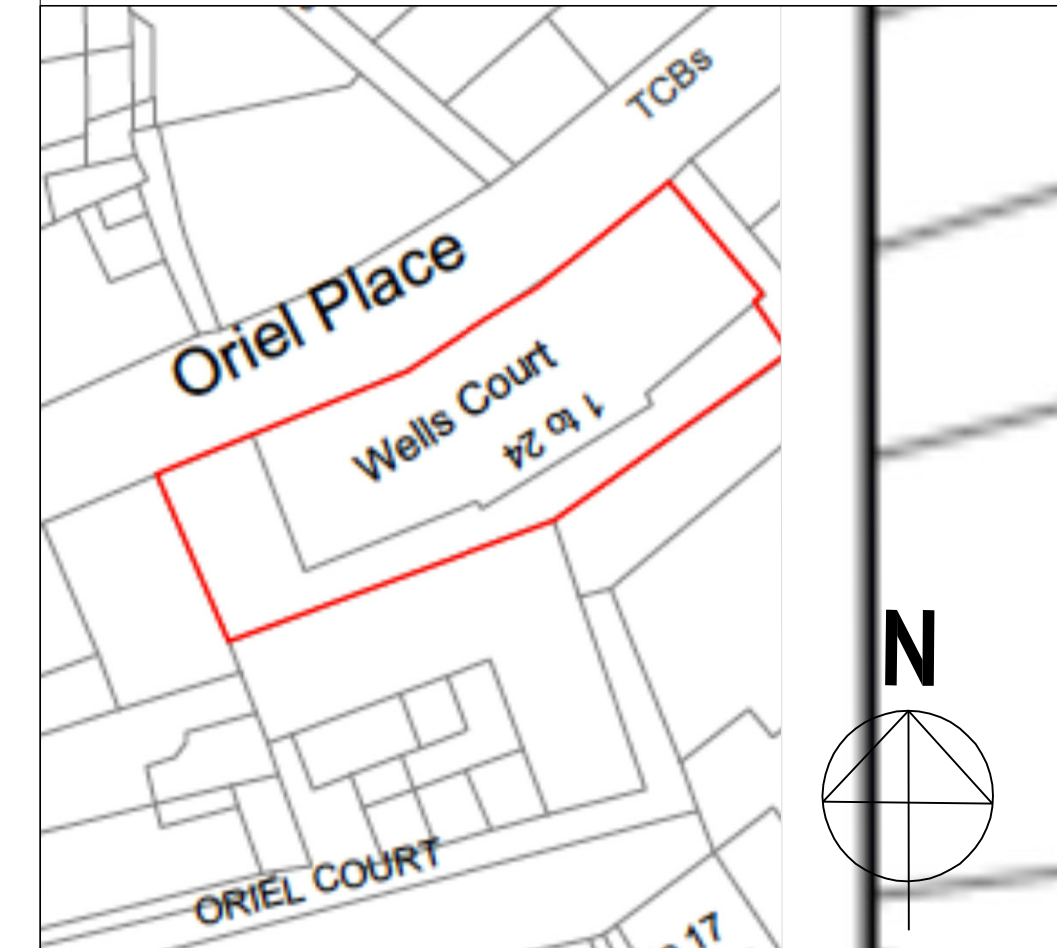
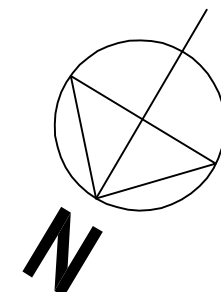


01_Cycle parking layout - 4 x Cycles spaces



00_Ground floor plan



PL00	-	For planning	
Rev.	Date	Reason for Issue	

Project
WELLCOURT
Oriel Place
NW3 1QN

Title
Ground floor plan
Cycle storage

Job No. A1807	Date January 2020	Drawn JG
Scale 1:75_@A1 1:150_@A3	Drawing No. P-A001	Revision PL00



The VELOPA Sheffield Cycle Stand

The tubular cycle stand, a familiar sight throughout the UK, allows the frame of the bicycle to be secured by the users own security lock. Suitable for securing two bicycles.

The practical and durable nature of the VELOPA Sheffield cycle stand ensures it has been consistently recommended by cycling groups since its introduction in the 1990's.

Shown are the galvanised and stainless flanged versions of the Sheffield Cycle Stand.

Options

Order Code	Description	Weight
138 200 111	Ragged (Galvanised)	9.7kg
138 200 101	Flanged (Galvanised)	8.2kg
138 200 112	Ragged (Galvanised & Coated Black)	9.7kg
138 200 102	Flanged (Galvanised & Coated Black)	8.2kg
138 200 105	Ragged (Galvanised & Coated; specify BS/RAL colour)	9.7kg
138 200 104	Flanged (Galvanised & Coated; specify BS/RAL colour)	8.2kg
138 200 107	Ragged (Stainless)	6.3kg
138 200 106	Flanged (Stainless)	5.6kg

Accessories & installation parts

138 100 994	12mm Expanding Bolt (Flanged only; 6 required per stand)
-------------	--

Product details

750mm x 800mm (Height x Length)
48mm outside diameter tube.
300mm below ground (ragged only)

Installation & use

Flanged versions require bolting to established concrete of at least 300mm cubed per leg.
Ragged versions require setting with concrete into a hole of at least 300mm x 300mm x 450mm (length x width x depth)
Allow 800-1,000mm between stands and a minimum of 450mm from any obstruction.
This product is guaranteed for 12 months (*if installed and used correctly*).