

# 67 Whitfield Street Planning Comments

## Insulation between ground and upper floors

Within the unit the tenant is required to install a level of protection which ensures the acoustic requirements of the apartments above are maintained. Performance criteria to be defined and assessed by an acoustician to the tenant.

## External seating

The image updated and associated references have been removed in Addendum document ( pg 7, April 2021). Updated image shows space without seating;



View from Poets park of 67WS

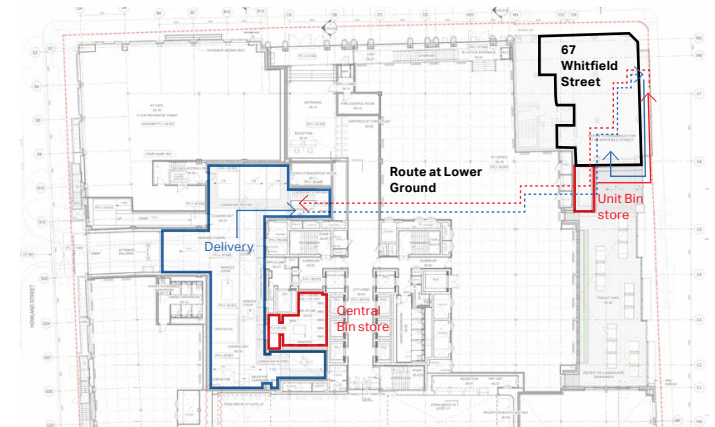
## Cycle parking

5 cycle parking spaces and associated end of trip facilities for restaurant staff are accommodated within 80 Charlotte Street cycle store.

## Servicing Management Plan (Waste and Deliveries)

The original submission noted that *'The refuse store associated with the unit is located between the park and retail space, providing a concealed secure location for refuse storage and collection. Deliveries activities are proposed to take place from the street frontage in line with approved development'*. We have subsequently confirmed servicing would take place using the internal service area ("Loading bay") as per site wide strategy.

Deliveries and bin storage/collection is to take place from the 80 Charlotte Street Loading Bay on Howland Street, The adjacent bin store is in the under-croft is for temporary storage before waste is moved in central bin store, see diagram opposite.



Servicing strategy drawing