



London School of Hygiene and Tropical Medicine

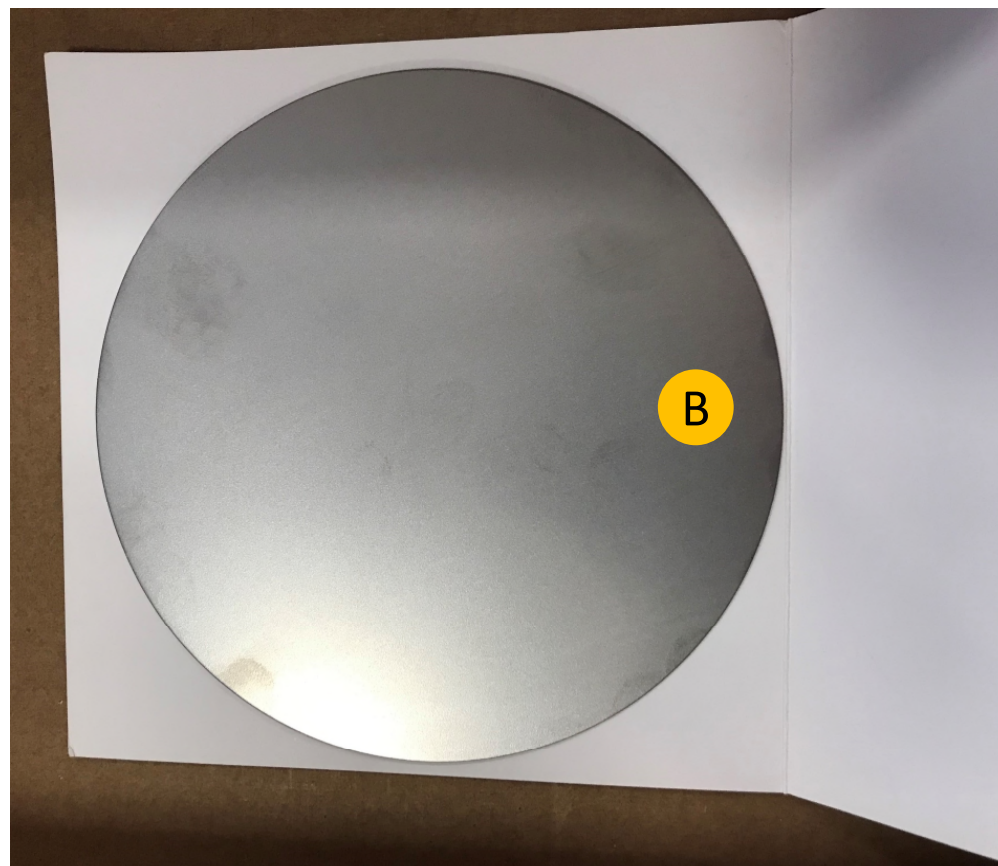
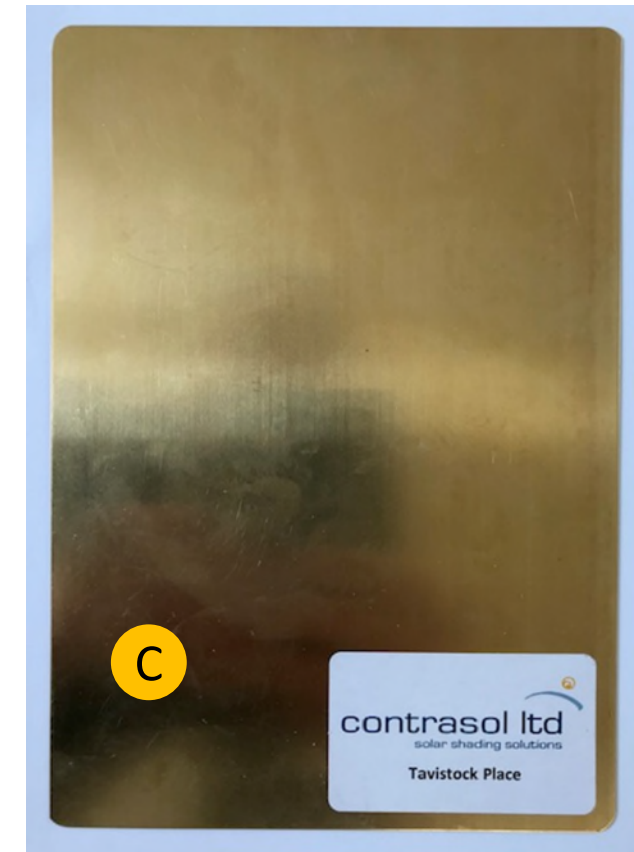
Planning Conditional Discharge

2021-04-29-Cladding_Materials

London School of Hygiene and Tropical Medicine

cladding materials 1

For planning condition discharge



Standing Seam Cladding

A TECU© Brass KME

Stainless Steel Feature Band

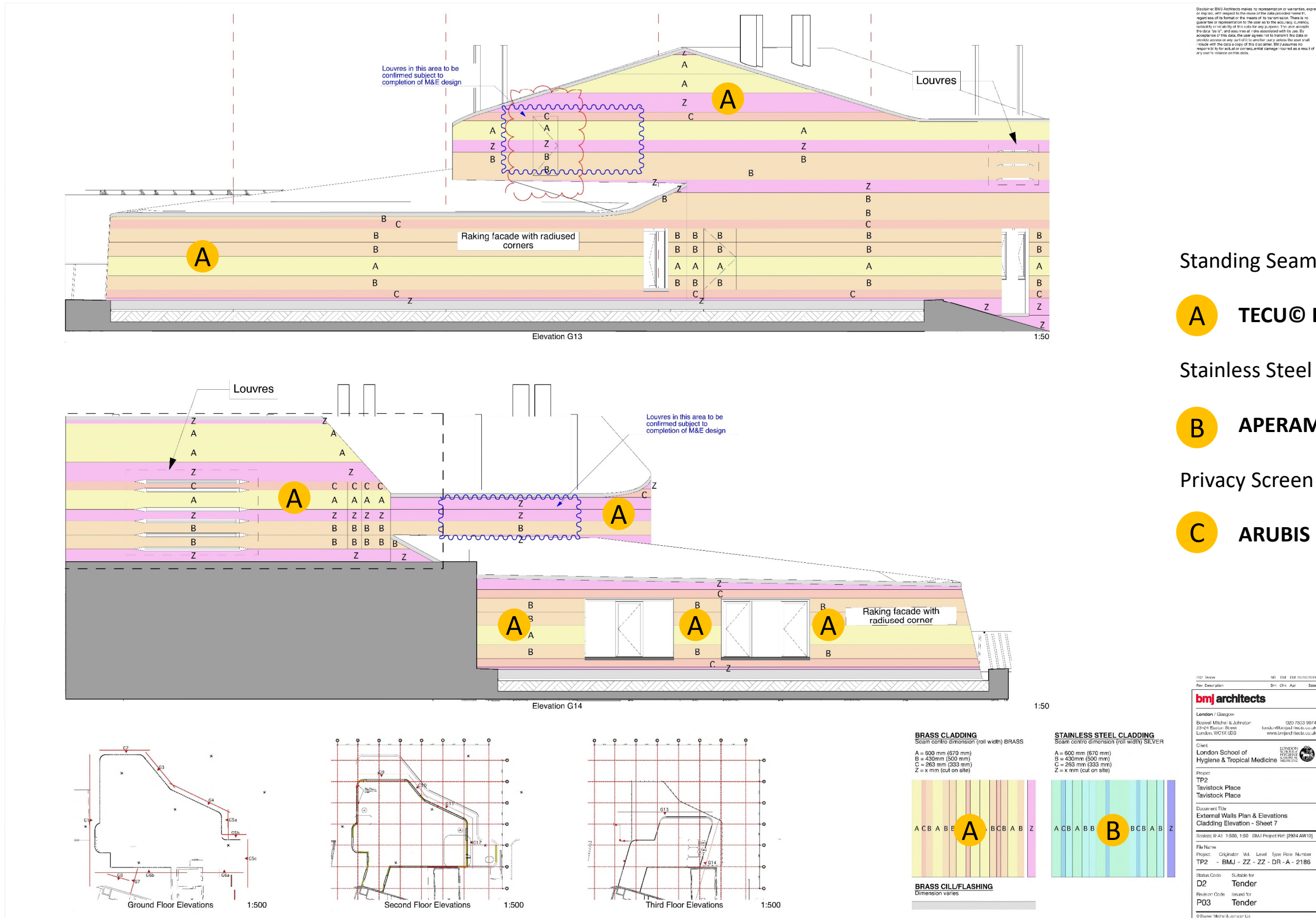
B APERAM Uginox Top (stainless steel)

Privacy Screen Fin – Facing Material

C ARUBIS Nordic Brass

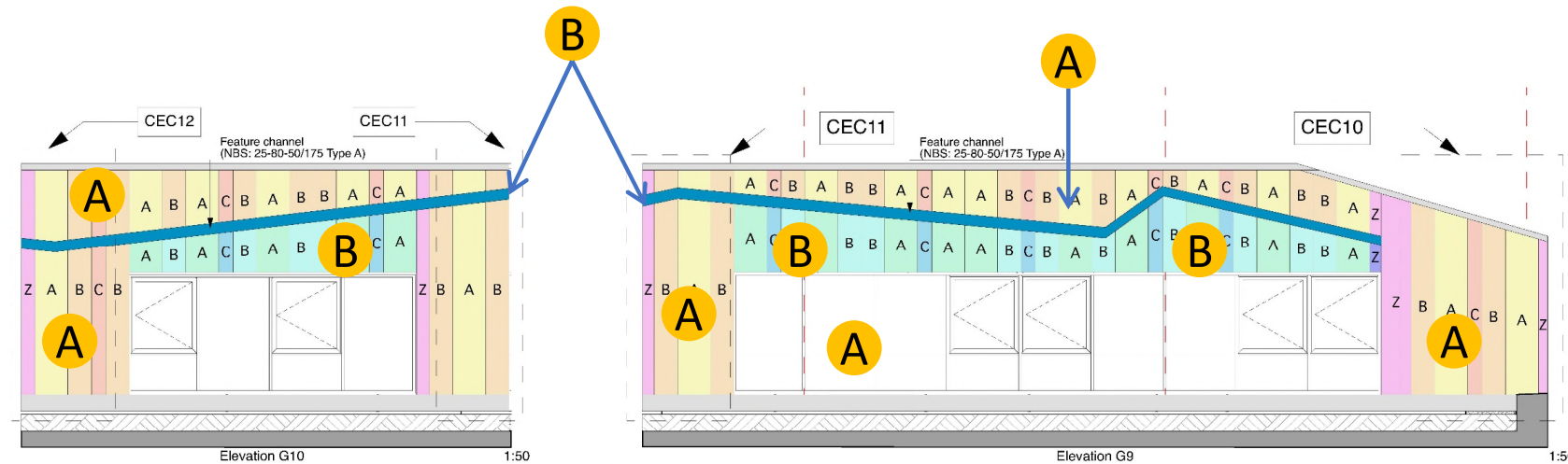
London School of Hygiene and Tropical Medicine

cladding materials 2



London School of Hygiene and Tropical Medicine

cladding materials 3



Standing Seam Cladding

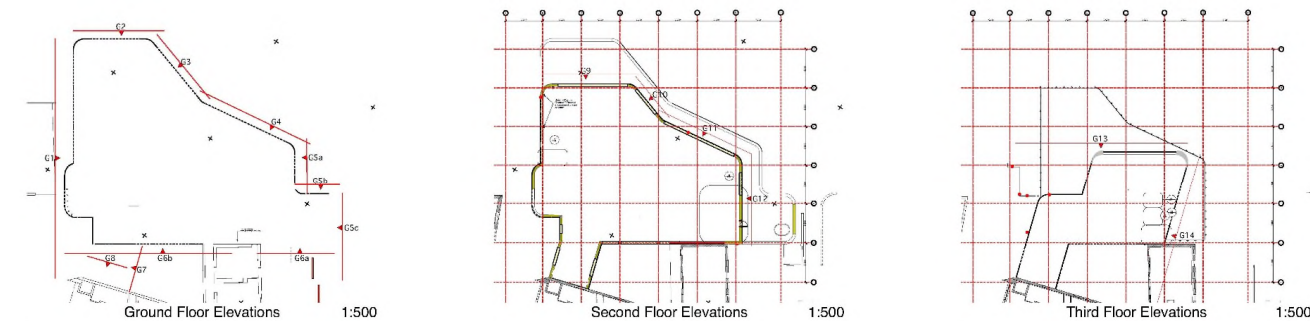
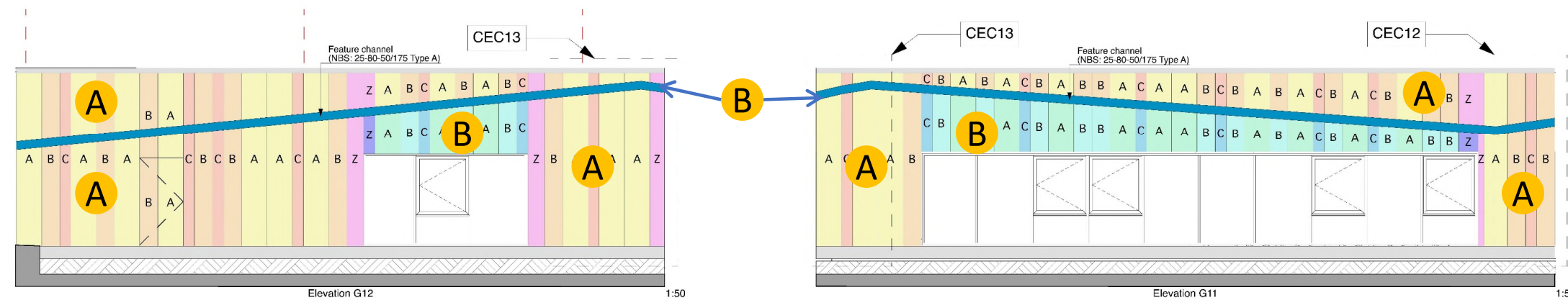
A TECU© Brass KME

Stainless Steel Feature Band

B APERAM Uginox Top (stainless steel)

Privacy Screen Fin – Facing Material

C ARUBIS Nordic Brass

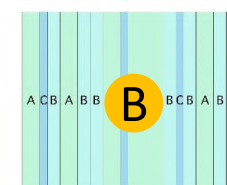
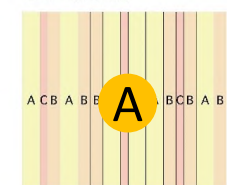


BRASS CLADDING
Seam centre dimension (roll width) BRASS


A = 600 mm (670 mm)
B = 430mm (500 mm)
C = 263 mm (333 mm)
Z = x mm (cut on site)

STAINLESS STEEL CLADDING
 Foam core dimension (roll width) SILVER

A = 600 mm (670 mm)
 B = 430mm (500 mm)
 C = 263 mm (333 mm)
 Z = x mm (cut on site)

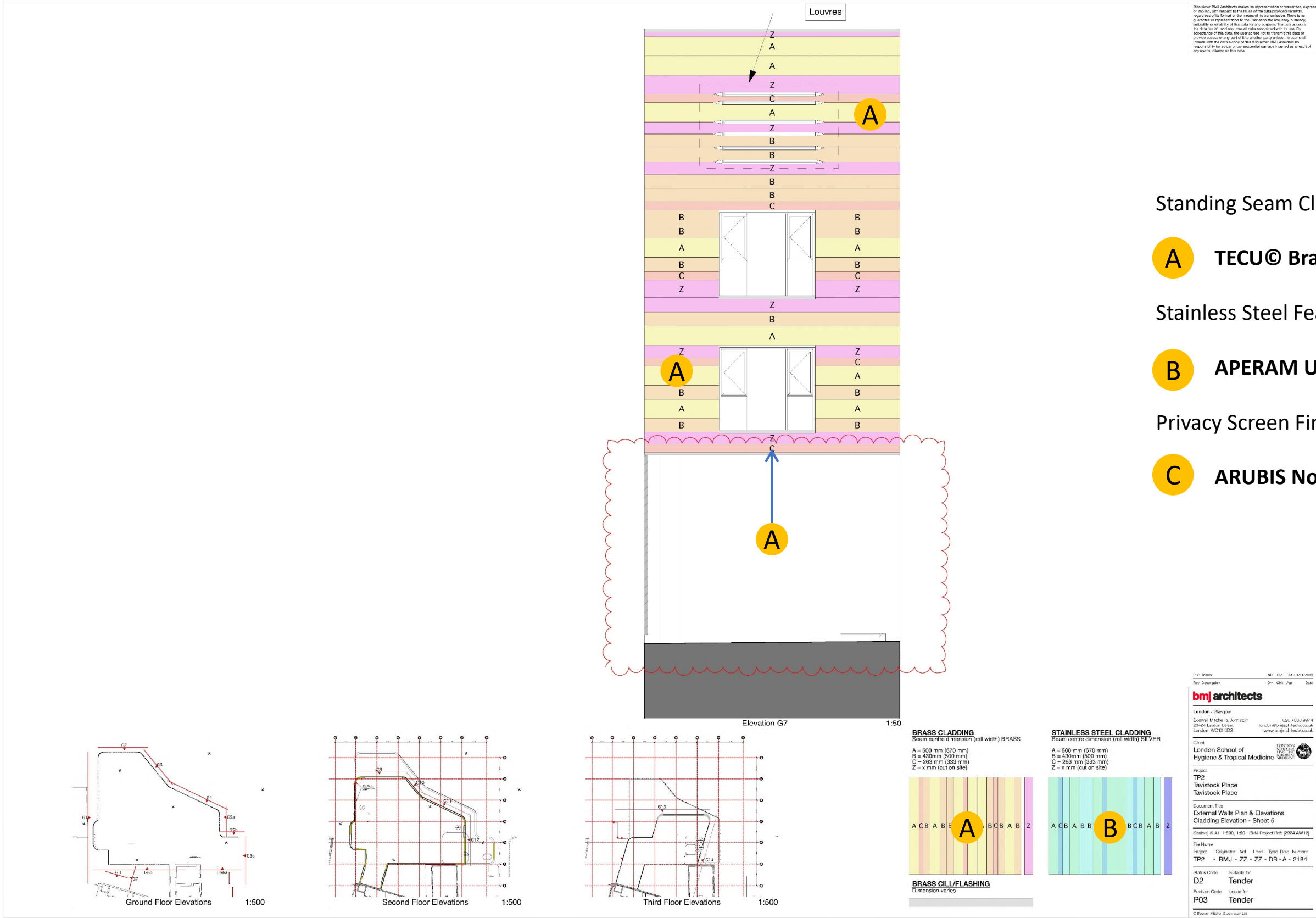


BRASS CILL/FLASHING
Dimension varies

<p>PDF Version</p> <p>Free Download</p> <p>bmj architects</p> <p>London / Glasgow</p> <p>Bowyer, Michel & Johnson 29-24 Eastern Street London, WC2E 8ED</p> <p>Client London School of Hygiene & Tropical Medicine</p> <p>Project TP2 Tavistock Place Tavistock Place</p> <p>Document Title Exterior Walls Plan & Elevations Cladding Elevation - Sheet 6</p> <p>Scale(s) 1:50 / 1:500, 1:500 (BMJ Project Ref: 2904 AW12)</p> <p>File Name Project: Originator Vol. Level Type Role Number TP2 - BMJ - ZZ - ZZ - DR - A - 2185</p> <p>Status Code Subtitle for D2 Tender</p> <p>Revision Code Issued for P03 Tender</p>	<p>NEI E&H D&I H&M</p> <p>Jun Jul Aug Sep</p> <p>2011</p> <p>020 7533 9937 london@bmjarchitects.co.uk www.london@bmjarchitects.co.uk</p> <p>LONDON GLASGOW</p> 
-----------------------------------------------------------------------------------------------------------------------------------------------------------------------------------------------------------------------------------------------------------------------------------------------------------------------------------------------------------------------------------------------------------------------------------------------------------------------------------------------------------------------------------------------------------------------------------------------------------------------------------------------------------------------------------------------------------------	-------------------------------------------------------------------------------------------------------------------------------------------------------------------------------------------------------------------------------------------------------------------------------------------------------

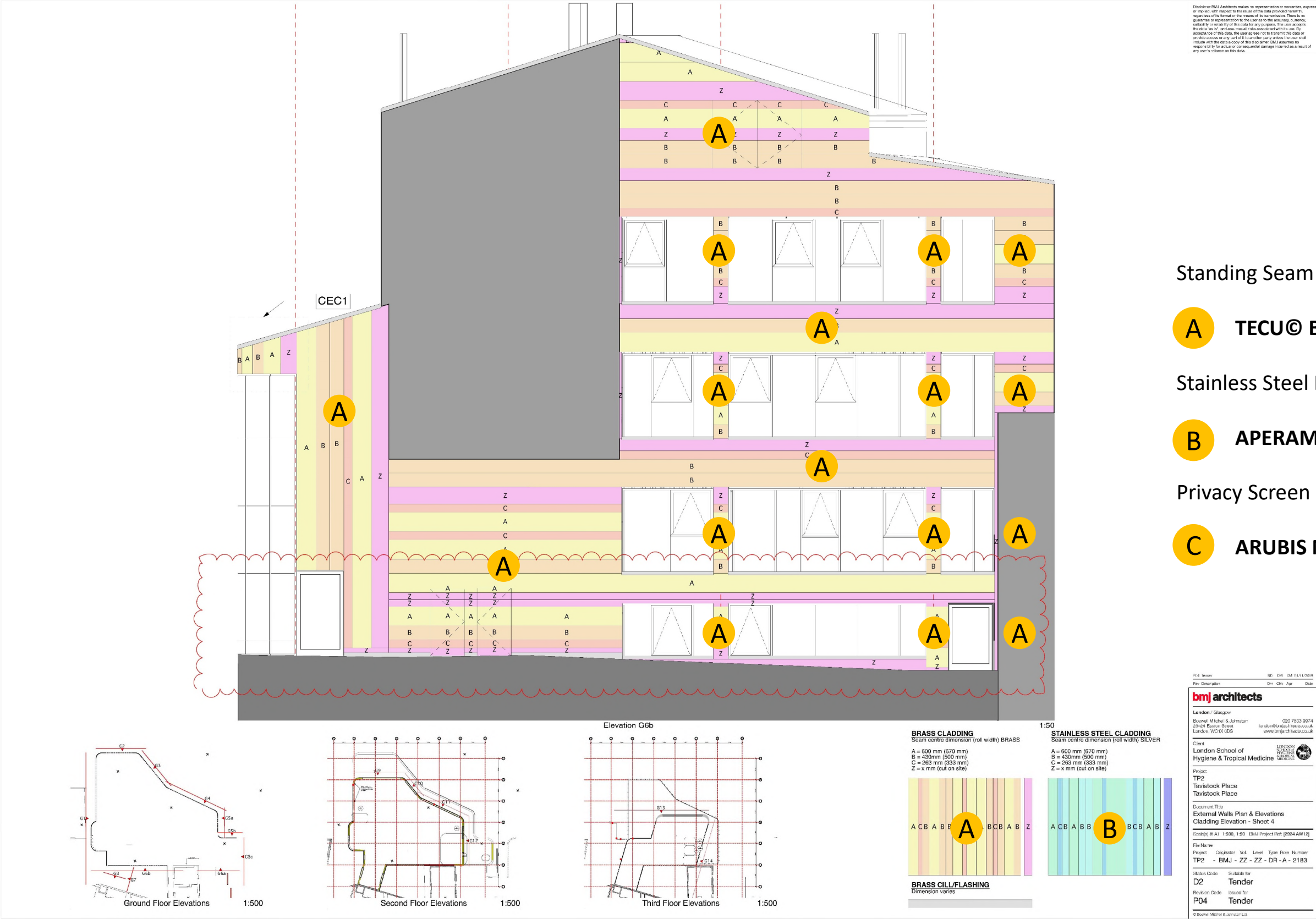
London School of Hygiene and Tropical Medicine

cladding materials 4



London School of Hygiene and Tropical Medicine

cladding materials 5



Standing Seam Cladding

A TECU® Brass KME

Stainless Steel Feature Band

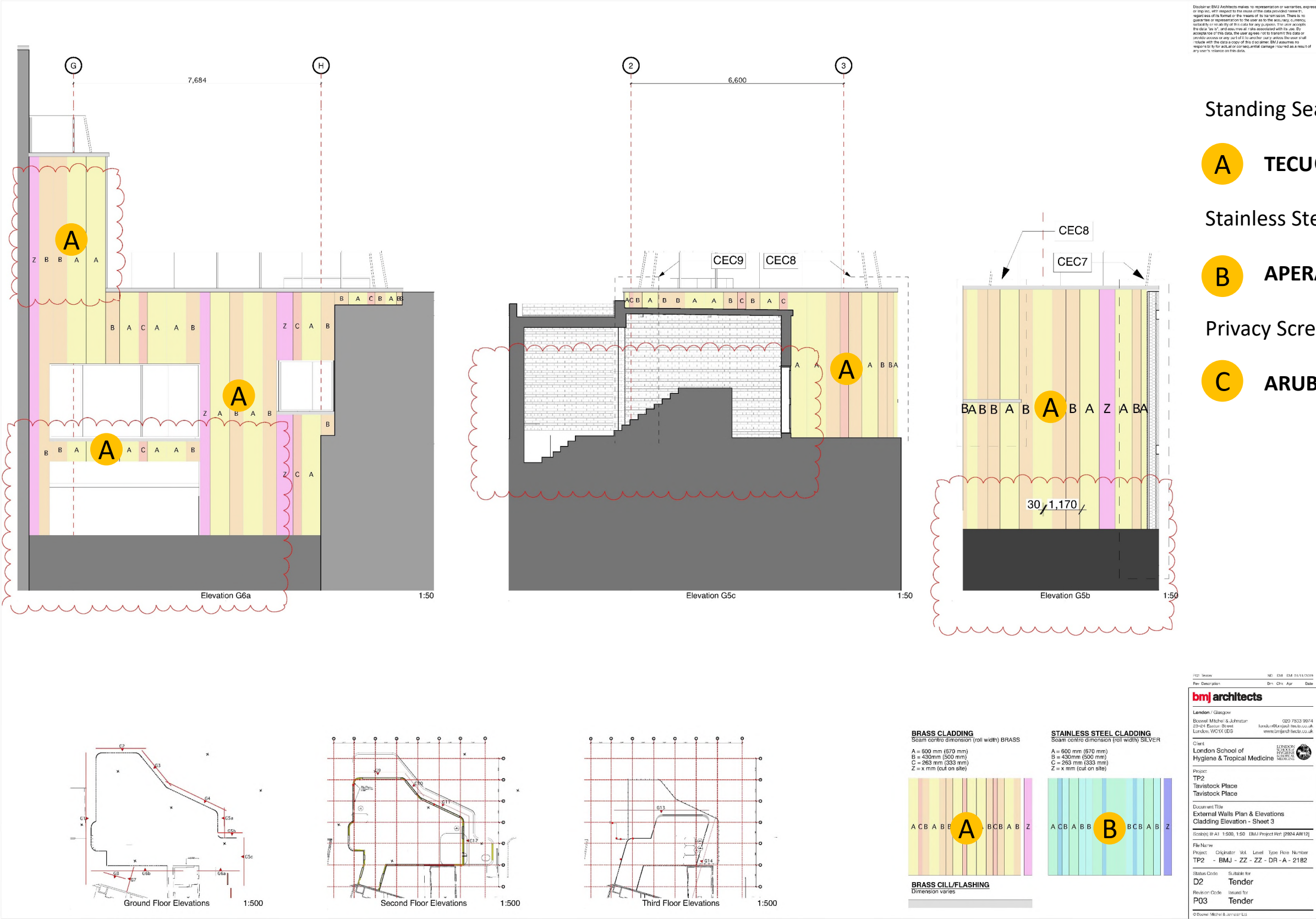
B APERAM Uginox Top (stainless steel)

Privacy Screen Fin – Facing Material

C ARUBIS Nordic Brass

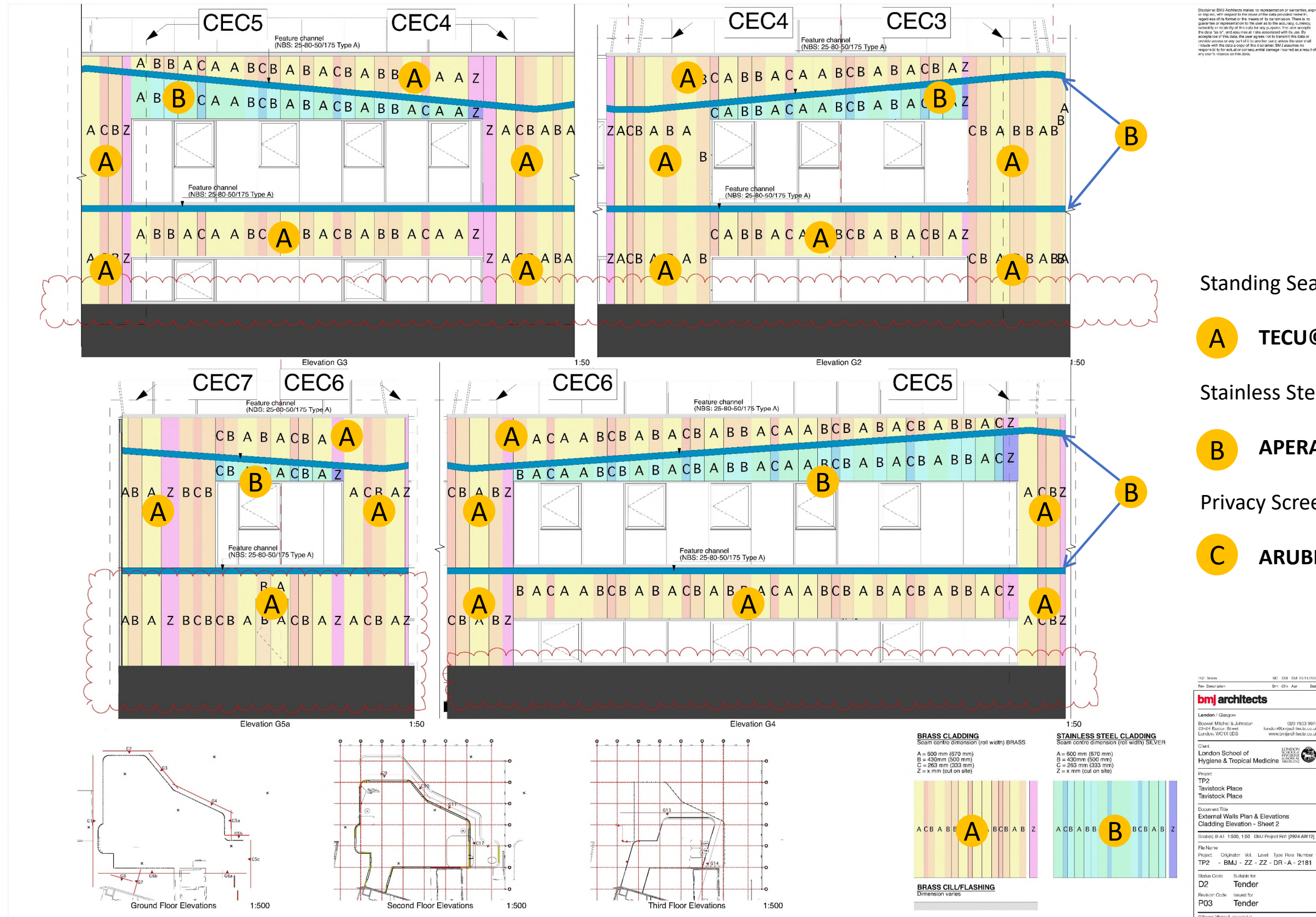
London School of Hygiene and Tropical Medicine

cladding materials 6



London School of Hygiene and Tropical Medicine

cladding materials 7



London School of Hygiene and Tropical Medicine

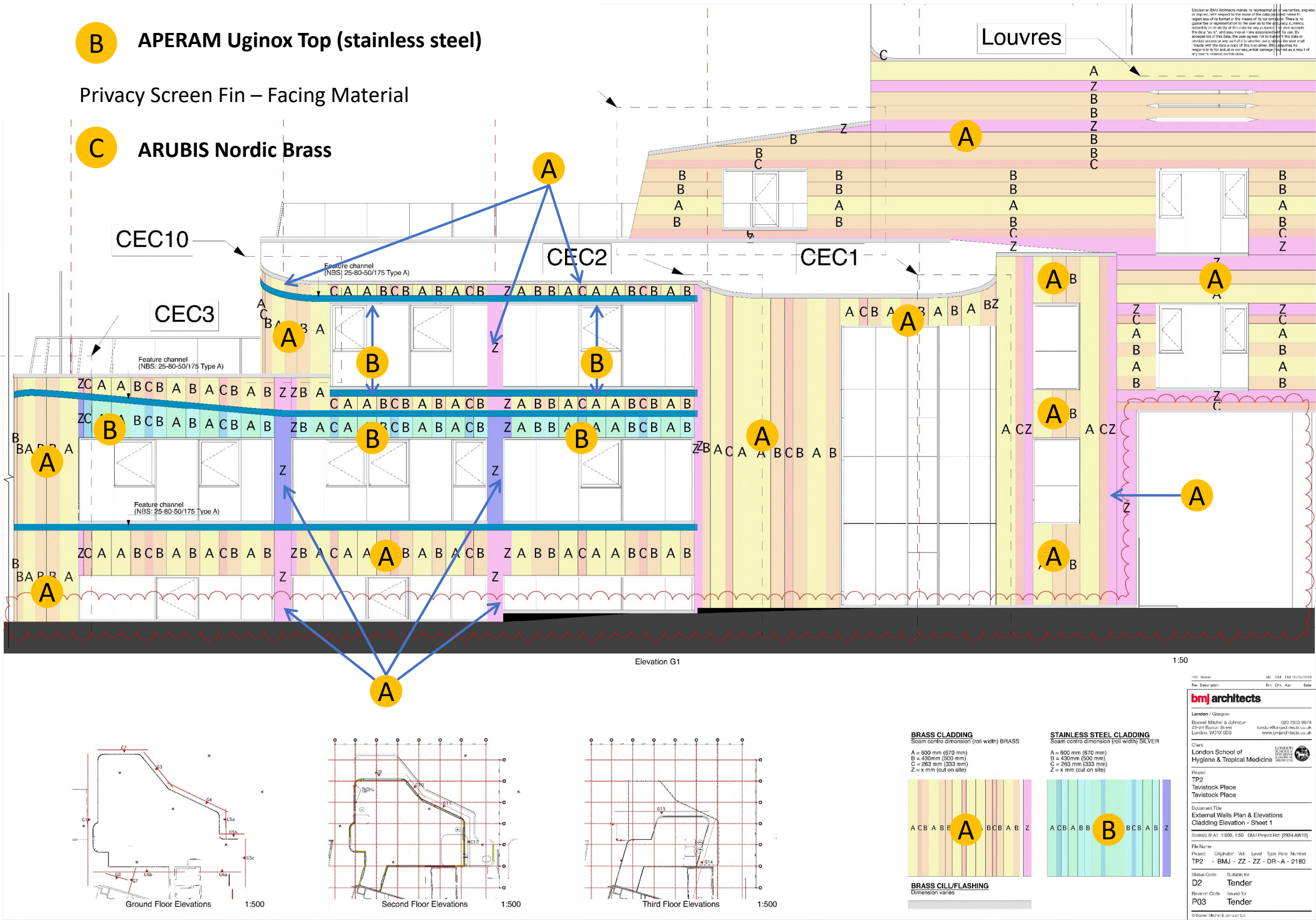
A TECU© Brass KME

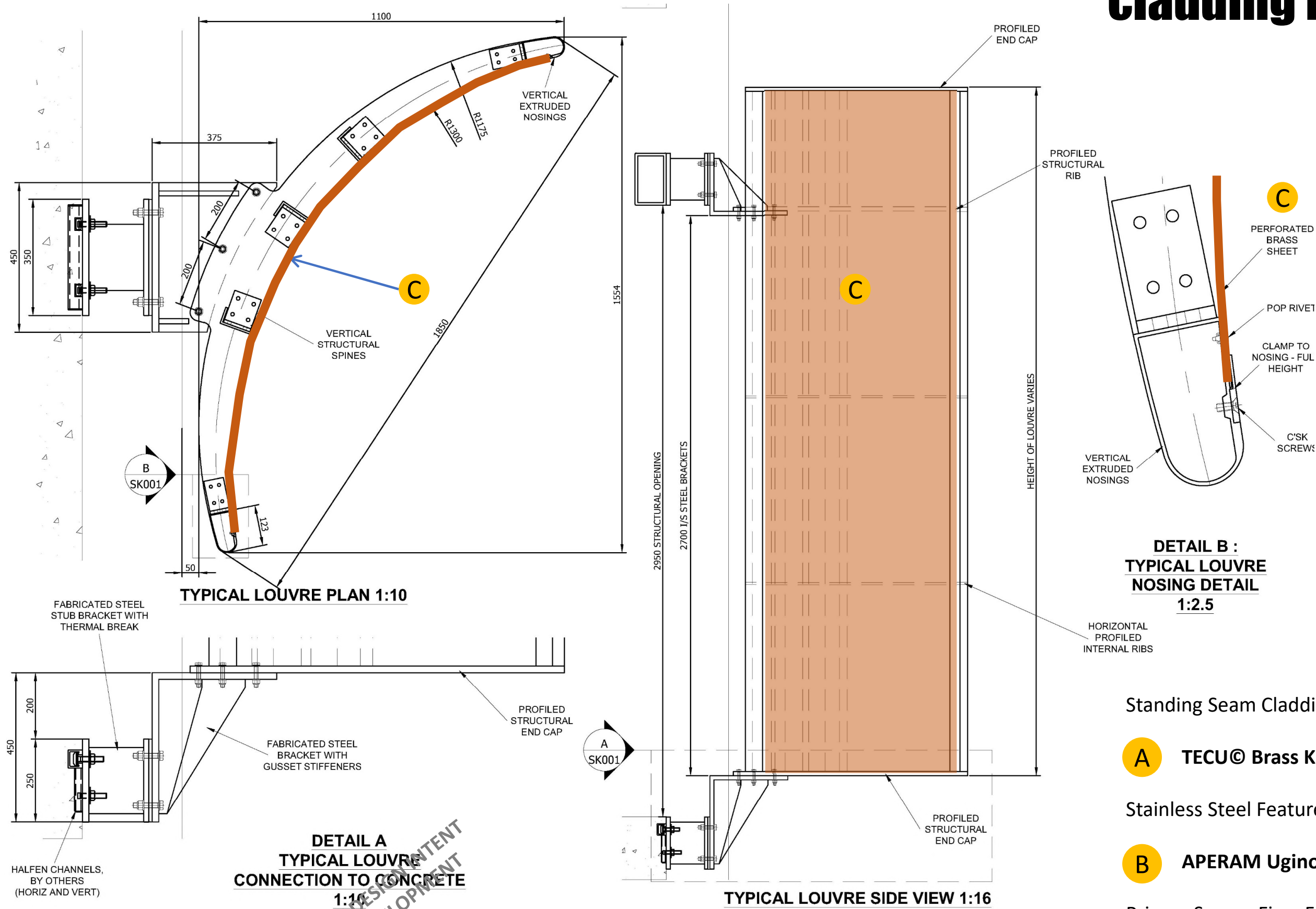
Stainless Steel Feature Band

B APERAM Uginox Top (stainless steel)

Privacy Screen Fin – Facing Material

C ARUBIS Nordic Brass





Standing Seam Cladding

- A** TECU© Brass KME
- Stainless Steel Feature Band
- B** APERAM Uginox Top (stainless steel)
- Privacy Screen Fin – Facing Material
- C** ARUBIS Nordic Brass