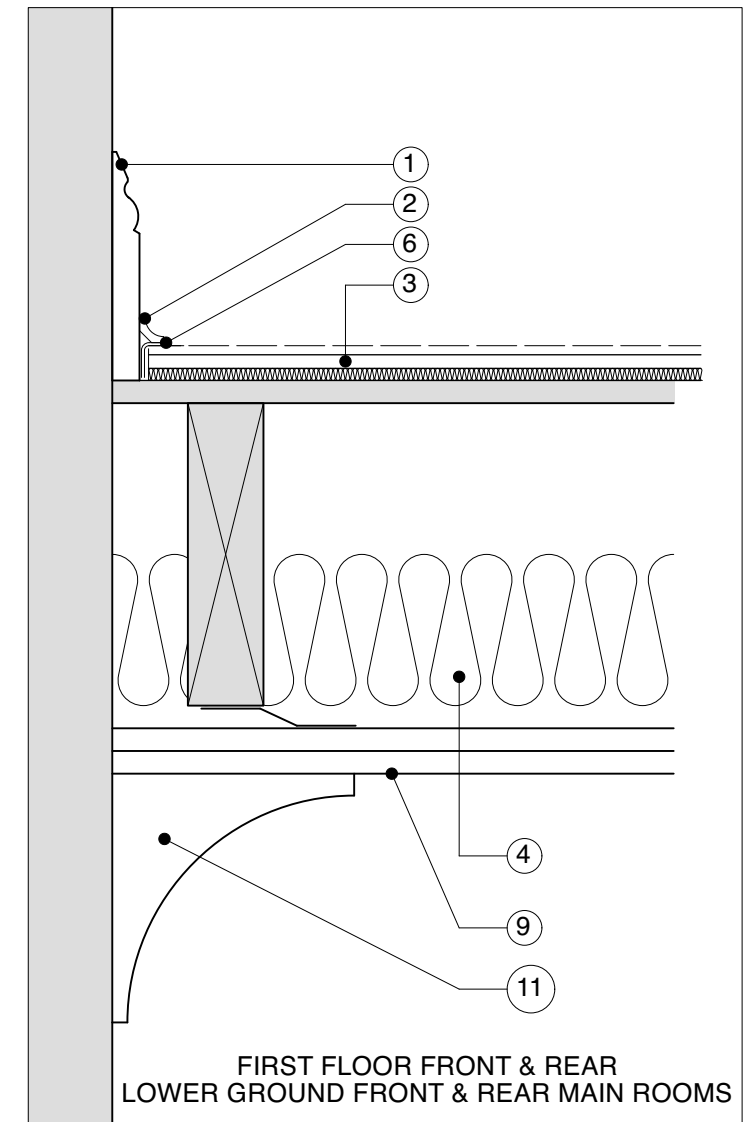
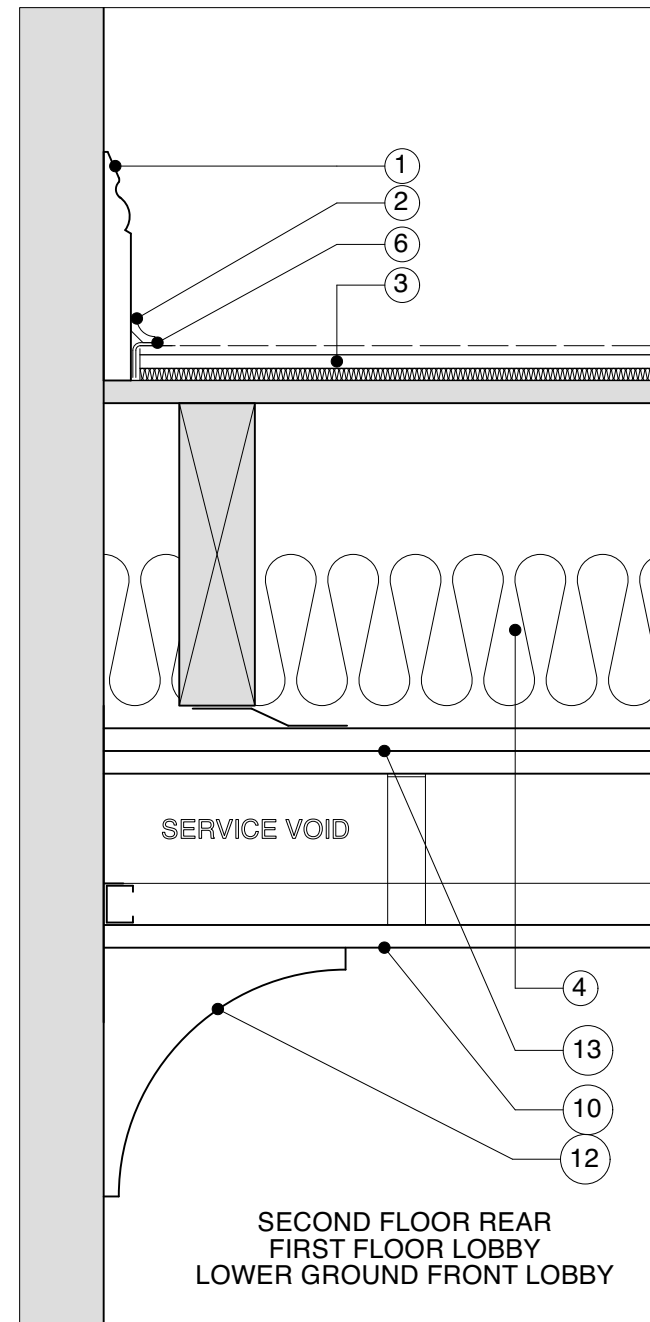
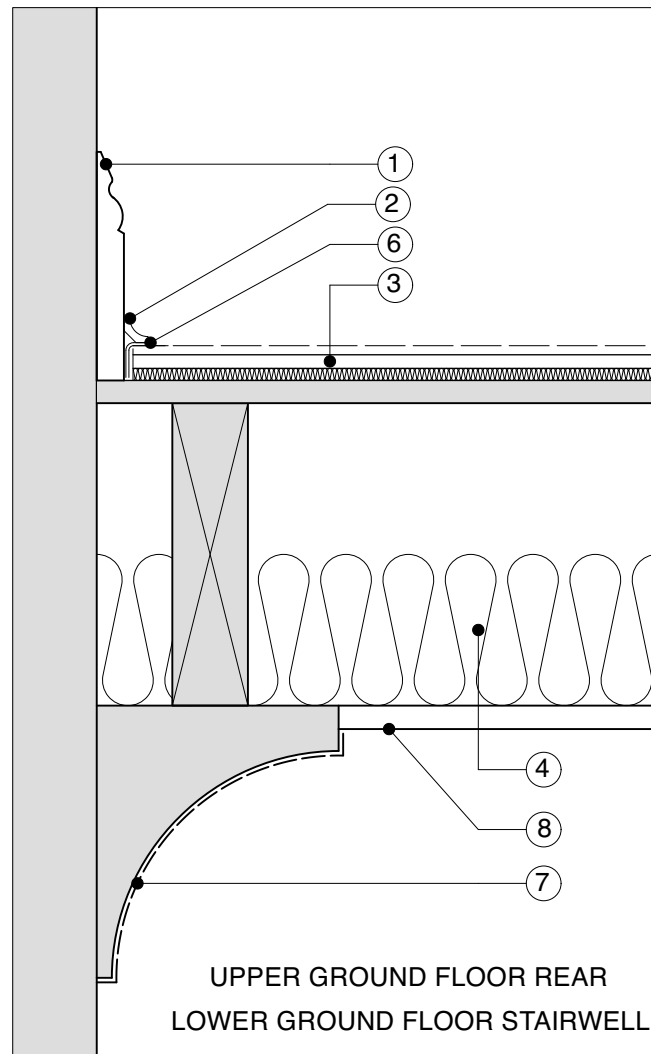
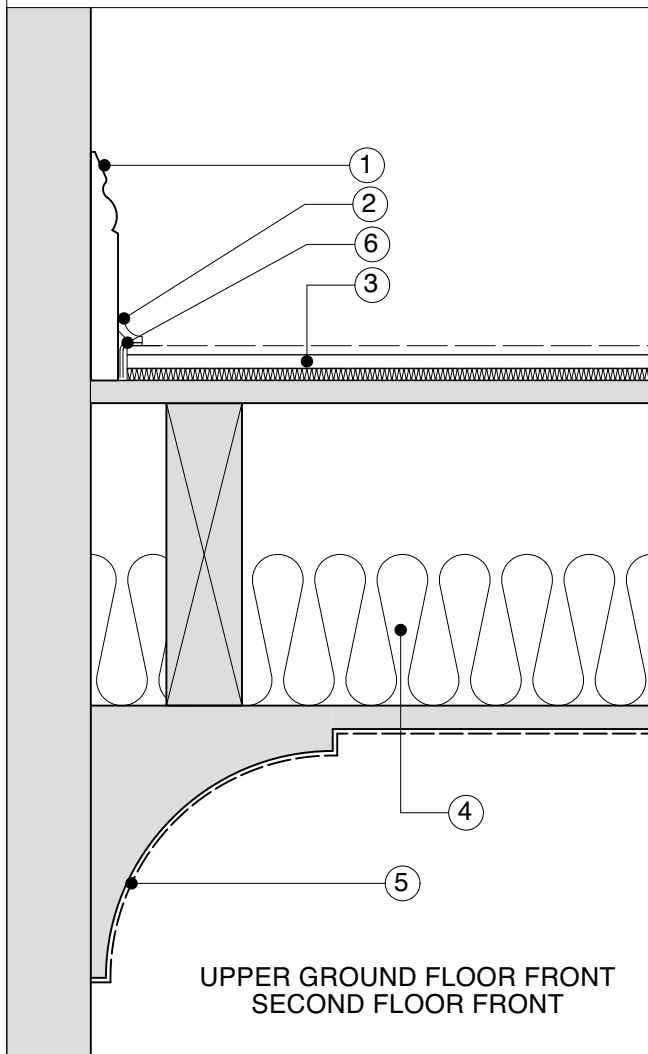


FLOOR TO CEILING DETAILS

Within apartments only. Refer to dwgs 112-116 for ceiling heights



Floor Detail 1

Floor Detail 2

Floor Detail 3

Floor Detail 4

Notes

1. Existing skirting to remain in place
2. Scotia trim to skirting board and floor finish
3. Floor finish on Collecta Deckfon 17t acoustic floating floor on 15mm existing floor boards
4. 100mm acoustic insulation between existing joists
5. Existing ceiling & cornice painted with 2 no. coats of Envirograf Product 105 to achieve 60 minutes fire resistance
6. Collecta Yelofon FS30 acoustic perimeter insulation to floating floor
7. Dashed line indicates 2 coats of Envirograf Product 105 to achieve 60 minutes fire resistance
8. Existing plasterboard ceiling replaced with 15mm Soundbloc F fire rated acoustic plasterboard
9. 2 layers of 15mm Soundbloc with staggered joints on 15mm acoustic resilient bars with intumescent acoustic sealant to perimeter to form 60 fire resistance ceiling. Skim and paint finish
10. 12.5mm plasterboard on Gyliner system with skim and paint finish
11. Replaced or new plaster replica cornice. Refer to drawing 126 for details
12. Replica cornice. Refer to drawing 126
13. 2 layers of 15mm Soundbloc with staggered joints on 15mm acoustic resilient bars with intumescent acoustic sealant to perimeter to form 60 fire resistance ceiling

Skirting and cornice profiles shown are indicative only. Refer to drawing 126.

All works to existing cornice to be undertaken by a specialist in ornamental plasterwork.

DRAFT

Existing skirting to remain in place, scotia trim added to floor perimeter.
FF Rear room changed from Detail 3 to Detail 4.
SF Front room amended from Detail 4 to Detail 1.

REVISION SUMMARY DATE REVISION