

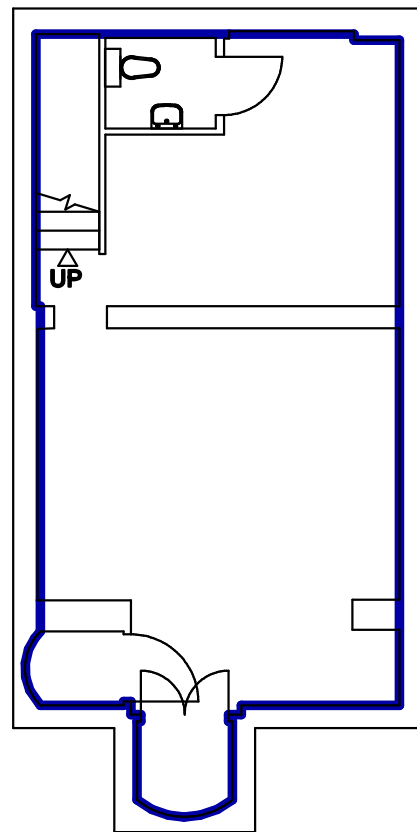
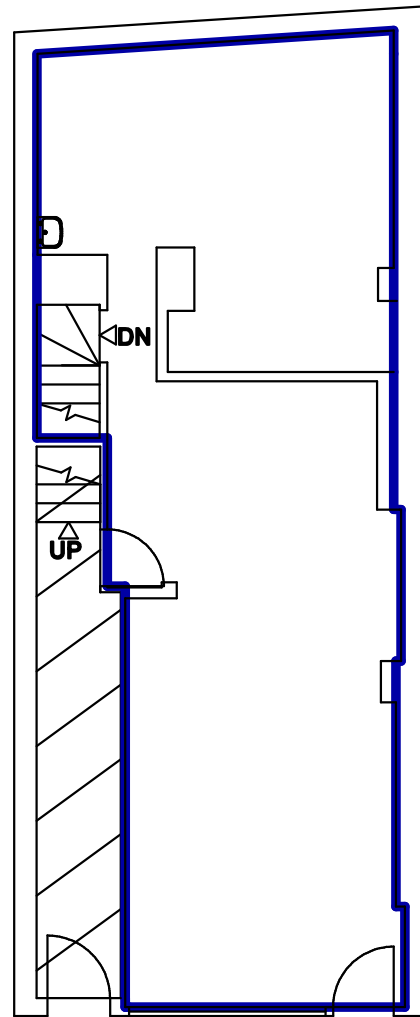


65 REGENTS PARK ROAD
LONDON NW1
Scale 1:100

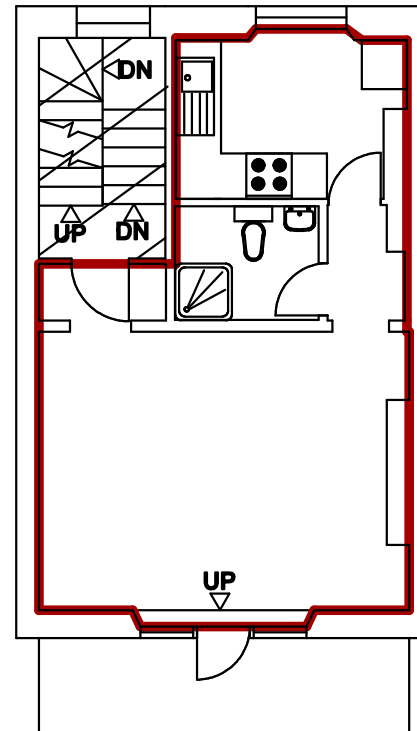
-  Gross Internal Area = 96.6 sq. metres/ 1040 sq. feet
-  Gross Internal Area = 90.6 sq. metres/ 976 sq. feet



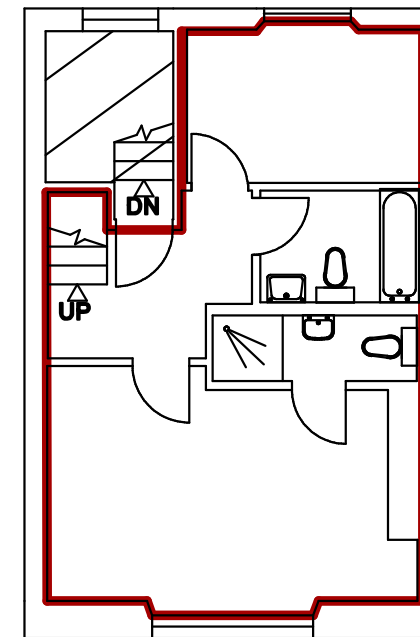
LOWER GROUND FLOOR



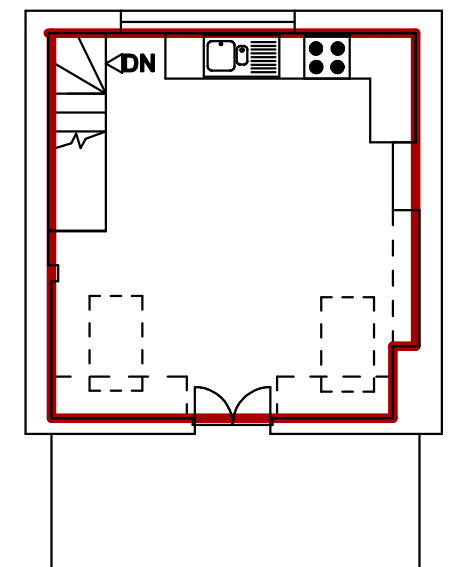
GROUND FLOOR



FIRST FLOOR



SECOND FLOOR



THIRD FLOOR