



## **Base & Build Details- Tree Protection measures method statement**

- Green Retreats Ltd have been appointed to build a timber clad Garden building <https://www.greenretreats.co.uk/>
- The Green Retreat studios are prefabricated panel structures assembled by hand and have an installation time of 2-7 days.
- No trees will need to be removed as a result of this build & it is set some distance from trees within the garden
- There are trees within possible falling distance so we will therefore ensure the build does not impact any underlying root systems
- We have included in this document details on the proposed method for building the foundation

Fig 1 Tree Foundation (TPO)

Fig 2 Example of Typical layout of piles

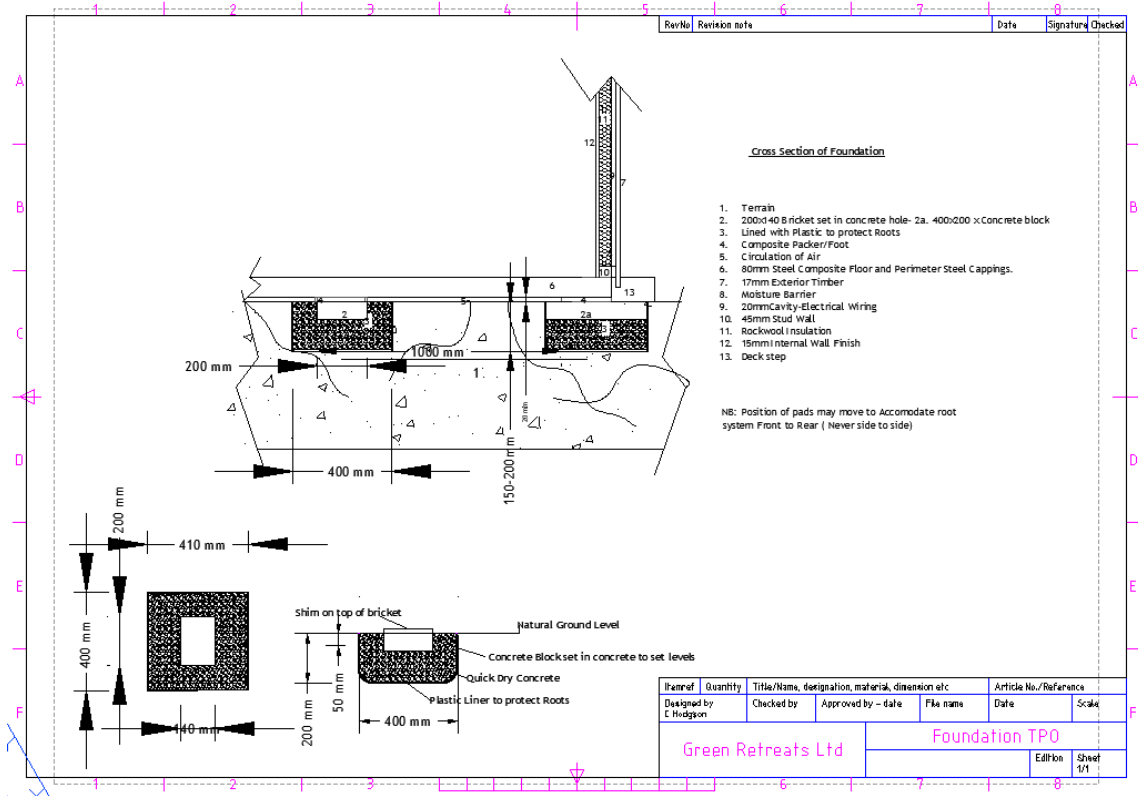
- The proposed method will ensure protection of the underlying roots if required by:
  - Limiting the depth of the foundation.
  - Hand-digging holes to allow the local manipulation required to avoid impacting roots  
Piles can be moved & placed along the line from front to back to work around the roots
  - Protecting any roots uncovered through the build
  - Lining holes with plastic if a root system is within the build area this will ensure no concrete mix comes into contact with root systems
  - Mixing the concrete away from the site / roots (and on a covered surface)
  - Establishing continuous monitoring of the build practices to ensure no trees are impacted
- See details below of our tree pad system

**Fig 1 Tree pad/pile foundation details**

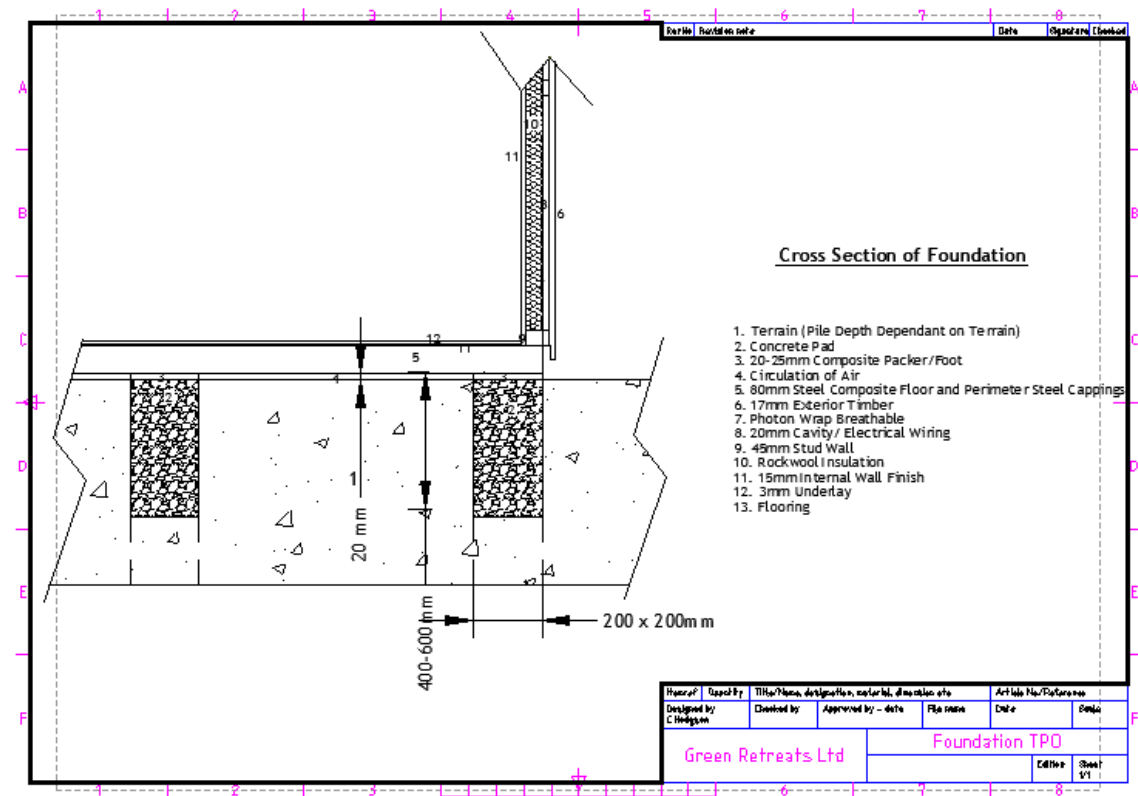
**Fig 2 Standard Pad/pile Foundations**

**Fig 3 Example of base layout**

**Fig 1: Tree Foundations Details**



**Fig 2: Standard Foundations**



Example: layout of concrete piles for building  
 The piles are set at 1m internal under the entire base.

