

8176 JC
27/04/2021

Nadine James
Montagu Evans LLP
70 St Mary Axe
London
EC3A 8BE

MBP	Michael Barclay Partnership
	consulting engineers
	72-78 Fleet Street London EC4Y 1HY
	T 020 7240 1191
	E london@mbp-uk.com
	www.mbp-uk.com

Dear Nadine,

LONDON SCHOOL OF HYGIENE AND TROPICAL MEDECINE, SUDS PLANNING CONDITION 8, 2017/5914/P

Planning Condition 8 (sustainable urban drainage system) of planning permission ref 2017/5914/P dated 27.6.18 was discharge on 18 September 2019 by Camden Council.

The discharge decision is based on the following documents:

Drawing Nos: 683-013- Drainage management and maintenance plan by Wilde; 1954-RW01C, RW02C, RW03C, RW04C, RW05C, RW06C, RW07C, RW08A;
MicroDrainage Calculation Sheets x 4: Ex_SW_OCC_1m-Surcharge, Ex_SW_30CC_1m-Surcharge, Pr_SW_29I-s_OCC_1M Surcharge, Pr_SW_29I-s_30CC_1M Surcharge; SW drainage pro-forma for new developments dated 22.3.19;
MicroDrainage Calculation Sheets x 4: Ex_SW_OCC_SealedMH_1mSurOut, Pr_SW_281-s_30CC_SealedMH_1mSurOut; TP2-WCC-ZZ-ZZ-DE-D-0050 rev P1; TP2-SCC-ZZ-ZZ-DR-D.0005 rev P1; Emails from agent dated 2.7.19 and 29.7.19

8Build, the main contractor for the works, have adopted the agreed proposals with the following amendments:

1. The SUDS below ground storage tank size is increased from 12m³ to 24m³ in accordance with the employer's requirements drainage drawing.
2. The SUDS pump station SW MH04 is replaced with a flow restricted manhole with a discharge rate of 28l/s, in accordance with the rate stated in the drainage proforma submitted by email to Aecom, Camden's SUDS advisor, on 22/03/19.
3. The north east outfall to the public sewer in Marchmont Street is omitted

The changes are marked onto revision P2 of Wilde Carter Clack's drawing No TP2-WCC-ZZ-ZZ-DR-D.0050 on the following page.

Continued on page 2.

MEMBERS

Principals

Julian Birch MSc, CEng, MStructE
Malcolm Brady BEng, CEng, MStructE
Anthony Hayes BSc, CEng, MStructE

Senior Associates

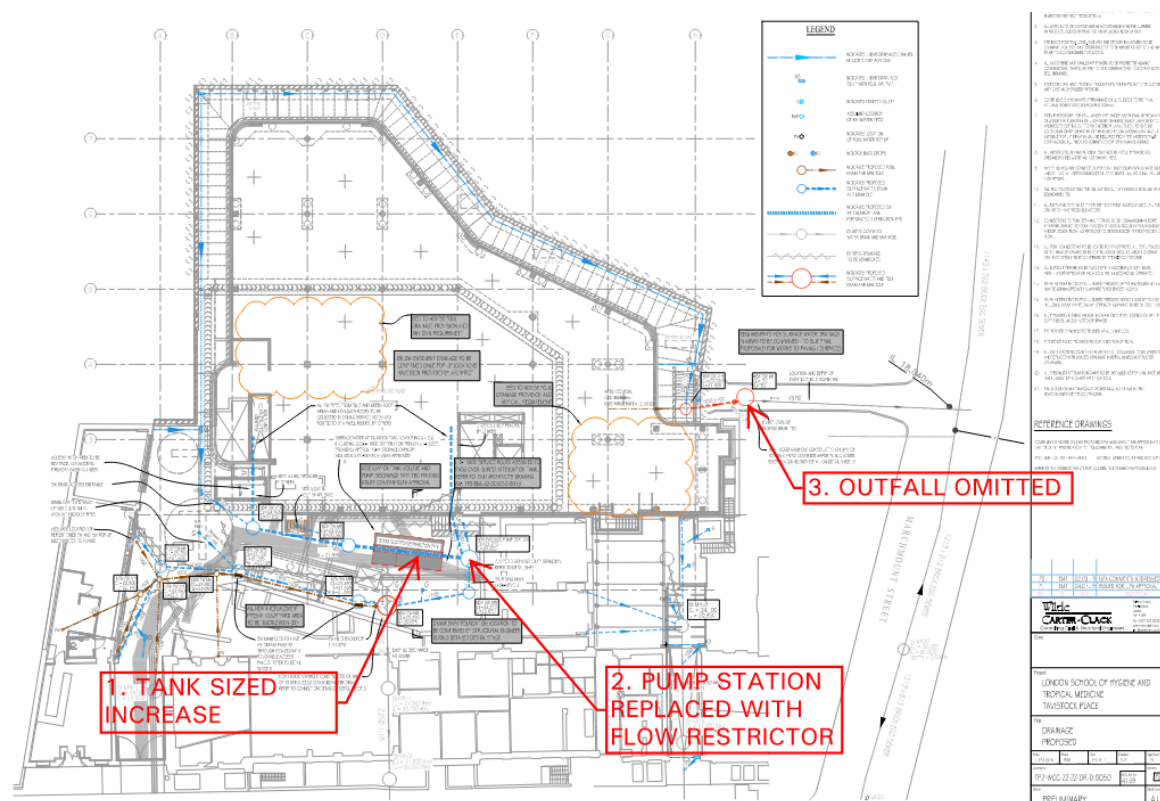
Jonathan Coleman MEng, CEng, MStructE
Louise Quick BEng, CEng, MStructE

Associates

Martin Fenn HNC
Konstantinos Gouzos MEng, MSc, CEng, MICE
Sina Heidarzadeh MEng, CEng, MICE
Natalie Martono MEng, CEng, MICE
Paul Melton BEng CEng, MICE
Luiza Pettersson BA, MSc

Consultants

Michael Eatherley BSc, CEng, MICE, MStructE
Keith Jeremiah MSc, CEng, FICE, MStructE, FGS
Nirupa Perera BSc, CEng, FStructE



The current SUDS scheme is shown on the below ground drainage drawings No:

1. 3049-PH001-C2
2. 3049-PH100-C3
3. 8176-MBP-XX-ZZ-DR-D-0100-C1

Copies of these drawings are enclosed. The attenuated rainfall area is like that of the consented scheme, 0.133 Ha.

A copy of the previously submitted and consented 28l/s MicroDrainage calculations by Wilde Carter Clack are enclosed for information.

In our opinion the changes are, at most, a minor amendment to the consented details.

Yours sincerely,

Jonathan Coleman
For Michael Barclay Partnership LLP

cc: 8Build Charlie Roberts By Email

Enc.