

PLAN ON OCTAGONAL SKYLIGHT
Scale 1:20

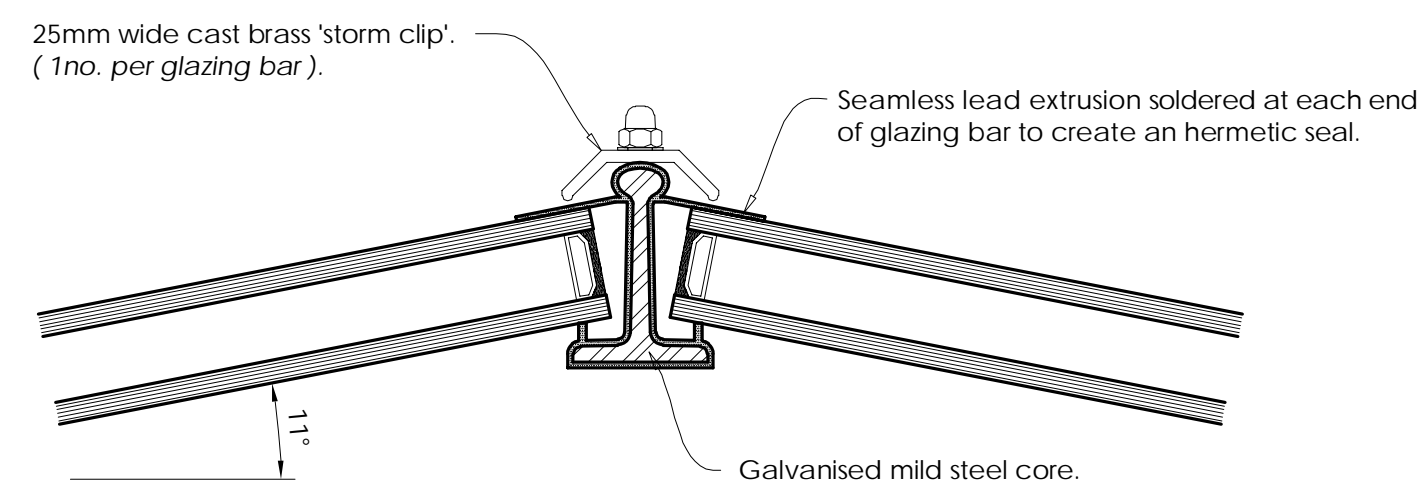
SPECIFICATION:-

No.7 'heritage' type galvanised mild steel glazing bars, with seamless extruded lead covers and cast brass furniture.

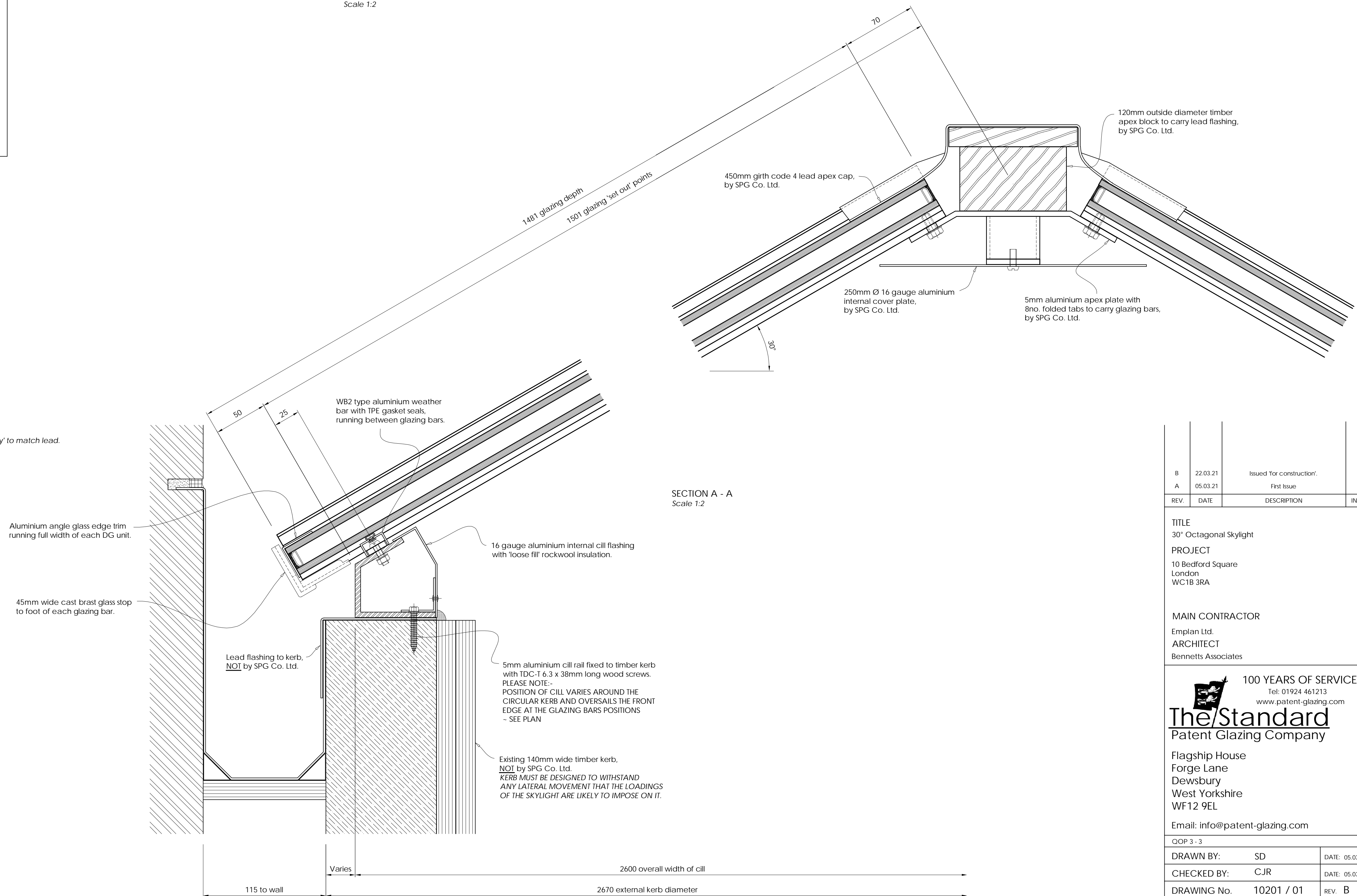
Glazed with 30.8mm thick double glazed units comprising:-
6mm clear heat-soaked toughened glass outer leaf
16mm argon filled cavity with black warm edge spacer bars
8.8mm clear low 'E' heat strengthened laminated glass inner leaf
(Centre pane U-value = 1.15W/m²K)

16 gauge aluminium flashings to cill position and code 4 lead flashing to apex.

Aluminium components to be polyester powder coated RAL 7015 matt 'slate grey' to match lead.



SECTION B - B
Scale 1:2



SECTION A - A
Scale 1:2

- NOTES**
1. This drawing is copyright. It must not be copied or disclosed (in whole or in part) to third parties without our written consent.
 2. The design and details shown on this drawing conform to the requirements of BS 5516: Parts 1 and 2 - Patent Glazing and Sloping Glazing for Buildings.
 3. Do not scale dimensions or details from this drawing. If in doubt, please ask.
 4. Structure to be designed by a Structural Engineer to withstand all loadings imposed by the patent glazing.
 5. The Standard Patent Glazing Company is not responsible for the overall design of the project, and our drawings are for reference only.
 6. Details embody current designs but we reserve the right to amend or modify profiles and fittings without notice.
 7. Size Variations - Bar lengths and frame +1.5mm. Composite installers may exceed this.

REV.	DATE	DESCRIPTION	INITIALS
B	22.03.21	Issued for construction.	SD
A	05.03.21	First Issue	SD

TITLE
30° Octagonal Skylight

PROJECT
10 Bedford Square
London
WC1B 3RA

MAIN CONTRACTOR
Emplan Ltd.

ARCHITECT
Bennetts Associates

100 YEARS OF SERVICE
Tel: 01924 461213
www.patent-glazing.com

The Standard
Patent Glazing Company

Flagship House
Forge Lane
Dewsbury
West Yorkshire
WF12 9EL

Email: info@patent-glazing.com

OOP 3 - 3		
DRAWN BY:	SD	DATE: 05.03.21
CHECKED BY:	CJR	DATE: 05.03.21
DRAWING No.	10201 / 01	REV. B
ISSUED FOR:	Construction	