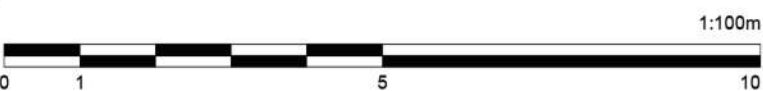
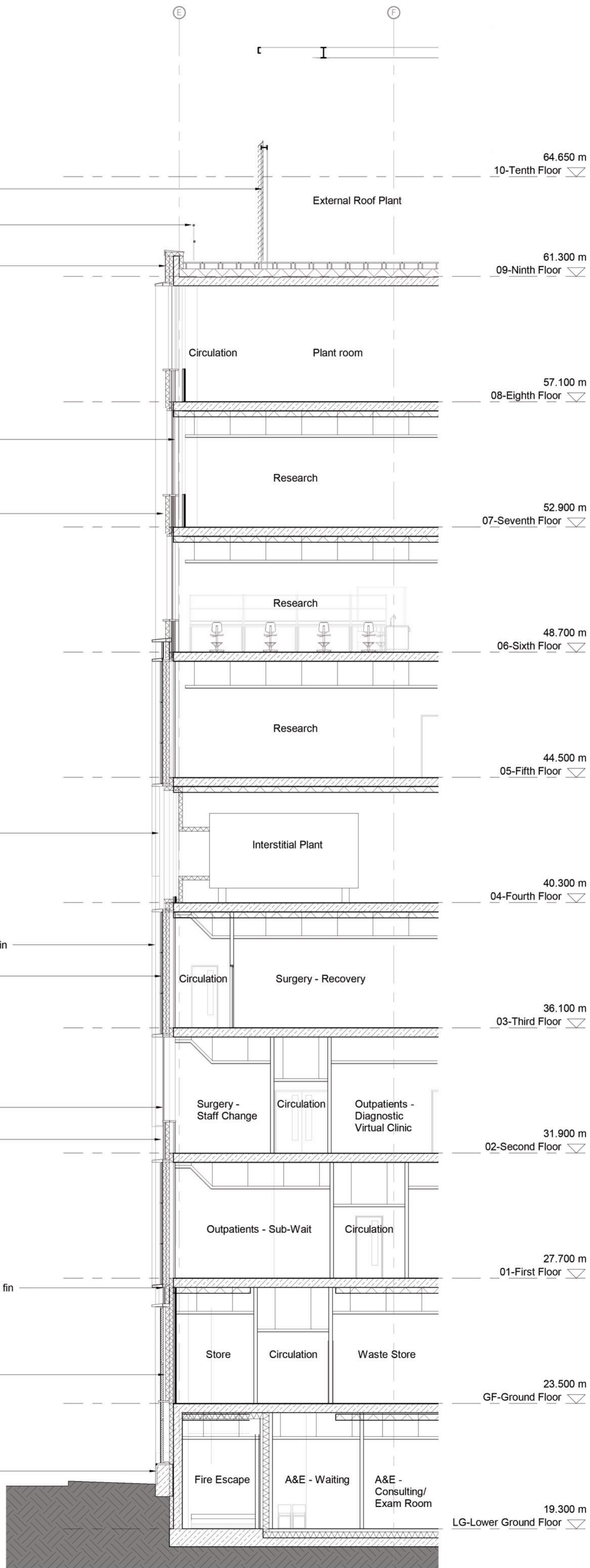


Detailed Northwest Elevation - Granary Street

SCALE: 1 : 100

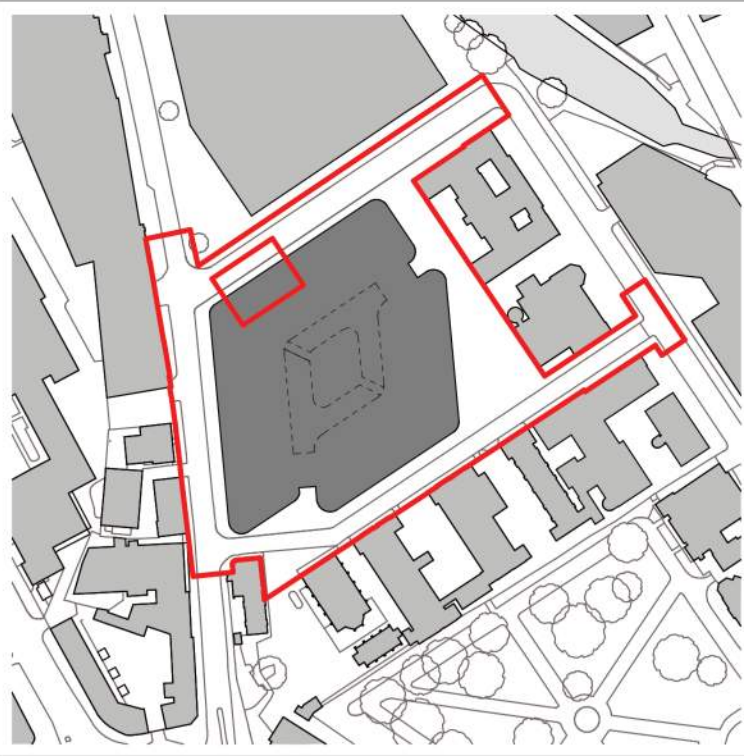


Note: Rendered image with people, shadows and planting shown for illustrative purposes only.



Proposed Detailed Section - Granary Street 1

SCALE: 1 : 100



©Penoyre & Prasad

Dimensions are to be verified on site prior to construction

Ordnance Survey Data reproduced by permission of Ordnance Survey® on behalf of Her Majesty's Stationary Office. ©Crown Copyright. All rights reserved.

Penoyre & Prasad are a trading division of Perkins & Will UK Ltd.

KEY

01 - Double storey glazed curtain walling system with stone clad wall finish and spandrel zone of artwork / decorative terracotta panels, and vertical timber fins. Aluminium louvred panels to plant areas.

02 - Single storey glazed curtain walling system with stone clad wall finish.

03 - Single storey structural glazing system with fully glazed external doors integrated. Low wall with stone clad finish and curved glass corners.

04 - Unitised curtain walling and cladding system, with aluminium frames with glazed shadow box and opaque panel comprised of bespoke ribbed glazed terracotta infill panels.

05 - Unitised curtain walling and cladding system, with aluminium frames with aluminium louvre panels and bespoke ribbed glazed terracotta infill panels.

06 - Unitised curtain walling and cladding system, with aluminium frames with glazed shadow box, bespoke ribbed anodised aluminium spandrel panels with bronze finish and aluminium louvre panels.

07 - Anodised bronze finish aluminium projecting fins and brise-soleil, integrated into unitised curtain walling and cladding system.

08 - Terracotta rainscreen cladding with bespoke ribbed glazed terracotta tiles.

09 - Standing seam metal cladding with natural silver finish

10 - Louvred plant screen (finish to match louvred panels in unitised curtain walling and cladding system).

11 - Steel frame to support PV array, PPC finish

12 - Lightweight metal balustrade, PPC finish to match louvred panels

13 - Glass balustrade

14 - Suspended entrance canopy with aluminium rainscreen panel

15 - Aluminium rainscreen panel soffit system

16 - Fair faced, smooth finish concrete column

17 - Roller shutter to Loading Bay

Rev	Date	Prep	Check	Description
P5	18.03.21	JG	KE	Planning Issue
P4	11.03.21	JG	KE	Planning Issue
P3	13.10.20	AR	KE	Development zone boundary updated; Issued for Planning
P2	25.09.20	NVA	KE	Planning Issue
P1	04.09.20	NVA	KE	Draft Planning Issue for Client Review

Penoyre & Prasad

AECOM

Altgate Tower
2 Leman Street
London E1 8FA
United Kingdom
Tel: +44 (0) 20 7061 7000
www.aecom.com

white

The White Chapel Building
10 Whitechapel High Street
London E1 8QS
020 7250 3477
penoyre@prasad.com

Client

Moorfields Eye Hospital and UCL
Institute of Ophthalmology

Project

Oriel

Drawing Title

Elevation Treatment and Materials 1

Purpose of Issue

Planning

Status code

A1

Scale @ A1

1:100

Drawing Number

Project

Originator

Volume

Level

Type

Role

Number

ORL

-

PPA

-

XX

-

XX

-

DR

-

A

-

20700

Revision

P5

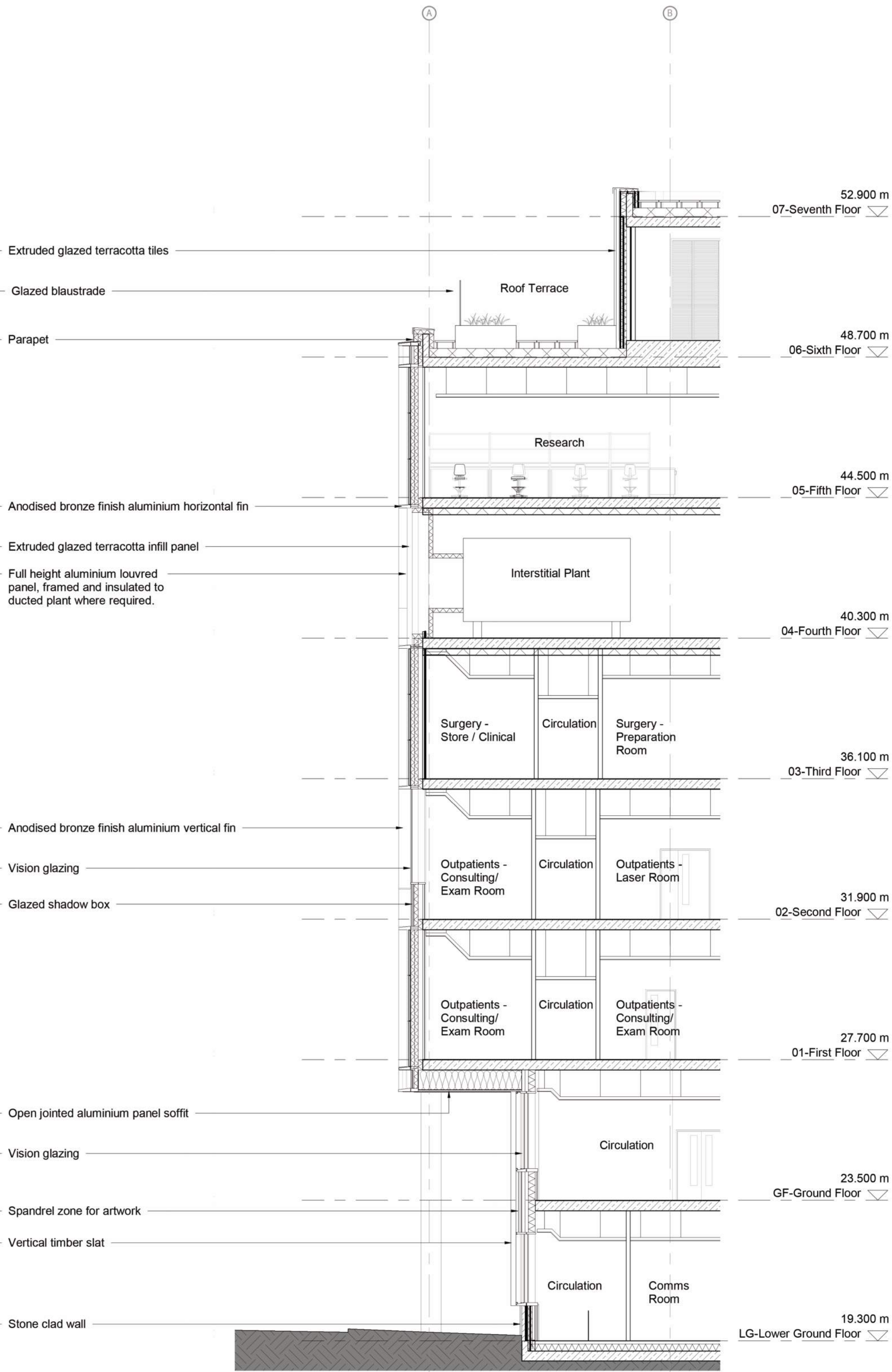


Detailed Southwest Elevation - St Pancras Way

SCALE: 1 : 100

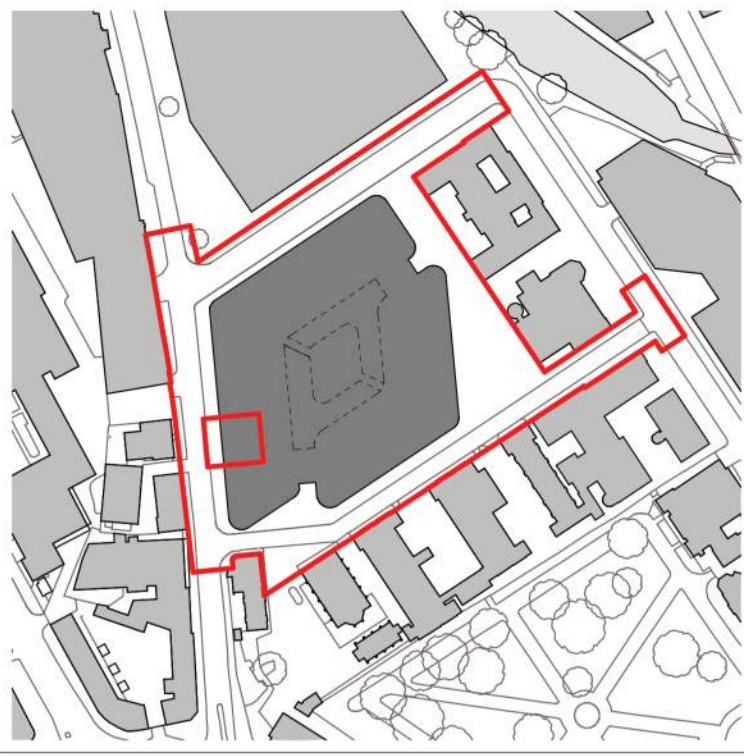


Note: Rendered image with people, shadows and planting shown for illustrative purposes only.



Proposed Detailed Section - St Pancras Way

SCALE: 1 : 100



©Penoyre & Prasad

Dimensions are to be verified on site prior to construction

Ordnance Survey Data reproduced by permission of Ordnance Survey® on behalf of Her Majesty's Stationery Office. ©Crown Copyright. All rights reserved.

Penoyre & Prasad are a trading division of Perkins & Will UK Ltd.

KEY

01 - Double storey glazed curtain walling system with stone clad wall finish and spandrel zone of artwork / decorative terracotta panels, and vertical timber fins. Aluminium louvred panels to plant areas.

02 - Single storey glazed curtain walling system with stone clad wall finish.

03 - Single storey structural glazing system with fully glazed external doors integrated. Low wall with stone clad finish and curved glass corners.

04 - Unitised curtain walling and cladding system, with aluminium frames with glazed shadow box and opaque panel comprised of bespoke ribbed glazed terracotta infill panels.

05 - Unitised curtain walling and cladding system, with aluminium frames with aluminium louvre panels and bespoke ribbed glazed terracotta infill panels.

06 - Unitised curtain walling and cladding system, with aluminium frames with glazed shadow box, bespoke ribbed anodised aluminium spandrel panels with bronze finish and aluminium louvre panels.

07 - Anodised bronze finish aluminium projecting fins and brise-soleil, integrated into unitised curtain walling and cladding system.

08 - Terracotta rainscreen cladding with bespoke ribbed glazed terracotta tiles.

09 - Standing seam metal cladding with natural silver finish

10 - Louvred plant screen (finish to match louvred panels in unitised curtain walling and cladding system).

11 - Steel frame to support PV array, PPC finish

12 - Lightweight metal balustrade, PPC finish to match louvred panels

13 - Glass balustrade

14 - Suspended entrance canopy with aluminium rainscreen panel

15 - Aluminium rainscreen panel soffit system

16 - Fair faced, smooth finish concrete column

17 - Roller shutter to Loading Bay

Rev	Date	Prep	Check	Description
P4	11.03.21	JG	KE	Planning Issue
P3	13.10.20	AR	KE	Development zone boundary updated; Issued for Planning
P2	25.09.20	NVA	KE	Planning Issue
P1	04.09.20	NVA	KE	Draft Planning Issue for Client Review

Penoyre & Prasad

AECOM

Altgate Tower
2 Leman Street
London E1 8FA
United Kingdom
Tel: +44 (0) 20 7061 7000
www.aecom.com

white

The White Chapel Building
10 Whitechapel High Street
London E1 8QS
020 7250 3477
penoyre@prasad.com

Client

Moorfields Eye Hospital and UCL
Institute of Ophthalmology

Project

Oriel

Drawing Title

Elevation Treatment and Materials 2

Purpose of Issue

Planning

Status code

A1

Scale @ A1

100

Drawing Number

Project

Originator

Volume

Level

Type

Role

Number

ORL - PPA - XX - XX - DR - A - 20701

Revision

P4

