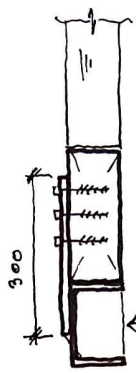
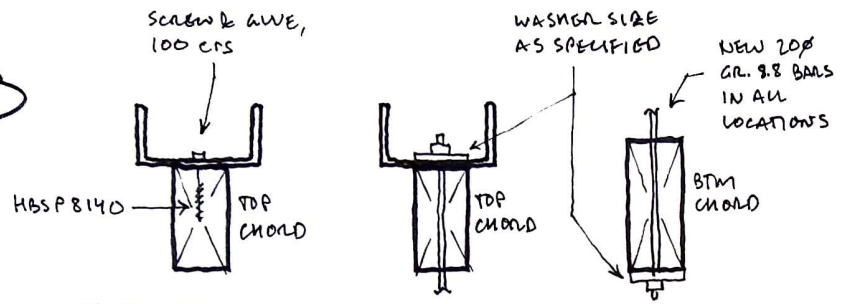
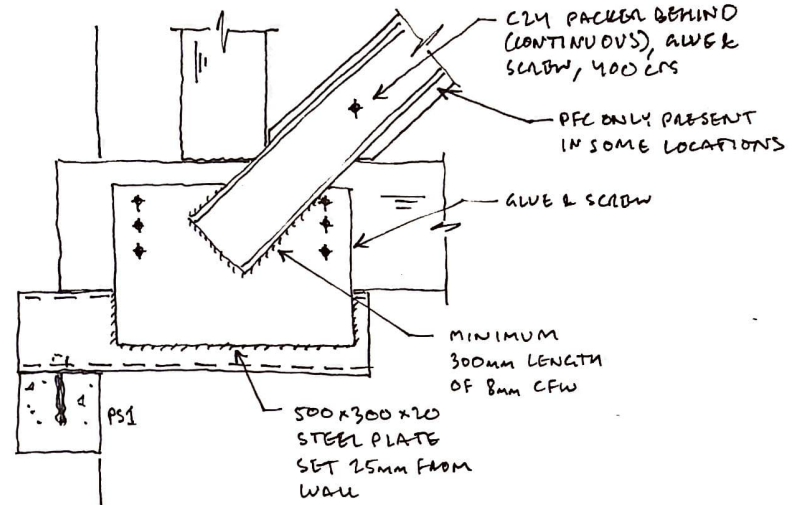


TYP



B

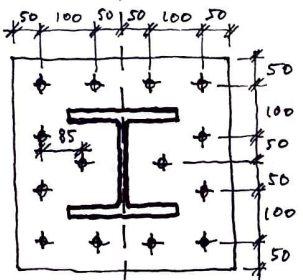


EA 150x150x10, 150 LONG, WELDED 3 SIDES

PLATE THICKNESS TO CONTRACTOR DESIGN

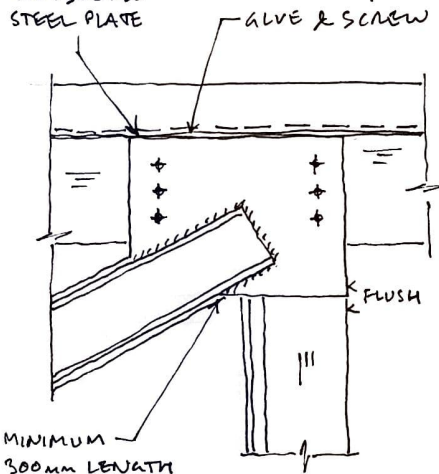
SCREW & AWE, 100 CRS

Hilti HIT-HY 270 + rod HIT-V + sleeve HIT-SCM 12x145 resin anchors

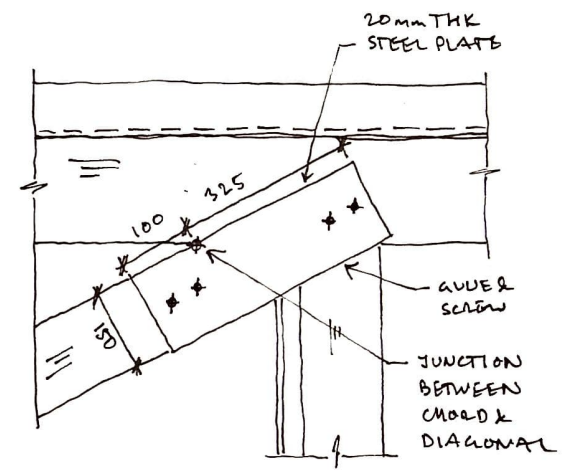


OF RETURN BRICK WALL, CONTRACTOR TO VALIDATE

400x300x20 STEEL PLATE



C



D

50mm WEN COMPACTED DRY-PACK

CONNECTION TO BE PROOF TESTED TO 2x24 kN = 48 kN

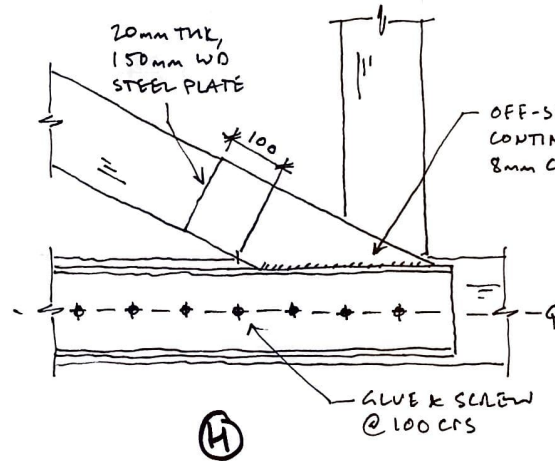
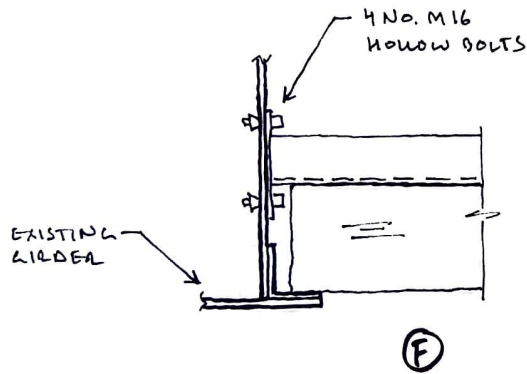
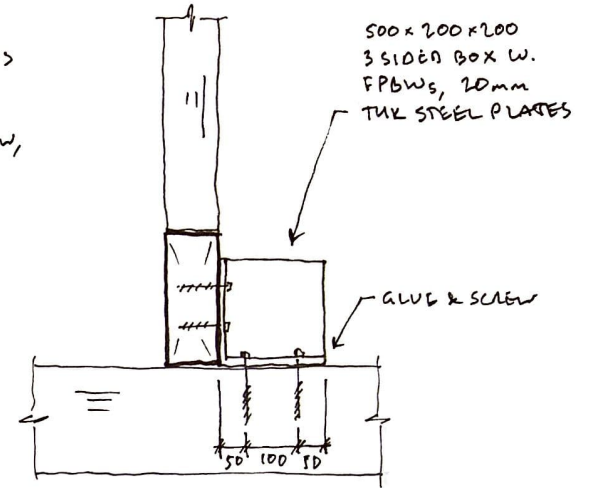
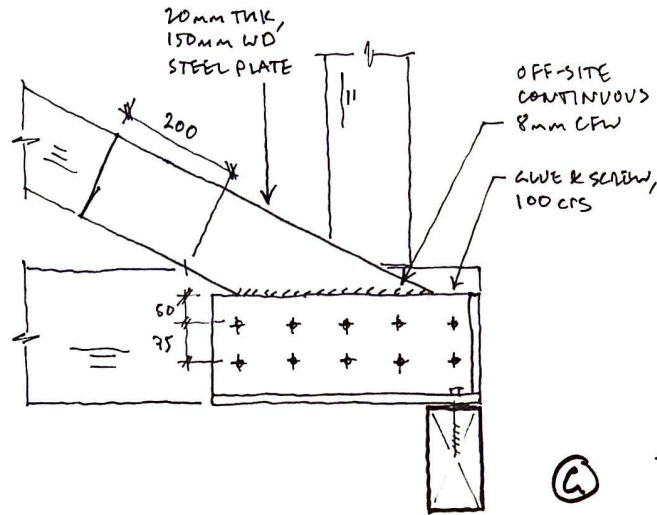
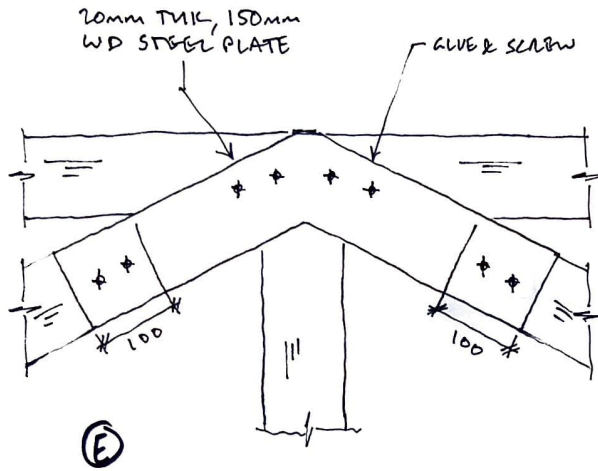


A

WHERE 'SCREW & AWE' OR 'AWE & SCREW' IS SPECIFIED, USE EITHER ROTAFIX OR ROTMOGLAS EPOXY TO FULL INTERFACE, SEEK MANUFACTURER'S ADVICE ON CORRECT PRODUCT FOR APPLICATION. TO THESE INTERFACES THE EPOXY FULLFILLS THE PRIMARY STRUCTURAL FUNCTION

SCREWS TO BE ROTMOGLAS HBS P 8100 U.N.O

3 PAGES



NOTES

- 150mm PLATE WIDTHS TO BE VERIFIED ON SITE & MODIFIED TO MATCH TIMBER WIDTH AS NECESSARY
- ALL WELDING OFF-SITE
- CONTRACTOR TO DESIGN & INSTALL TEMPORARY SUPPORTS TO TRUSSES DURING WORKS
- STEEL CONNECTIONS TO CONTRACTOR DESIGN
- ALL DIMENSIONS TO BE VERIFIED ON SITE BY CONTRACTOR
- ALL STEEL SUBS. SUBGRADE BY CONTRACTOR DEPENDING ON SEVERITY
- ALL BOLTS & BARS CL. 8.8
- FURTHER WORKS MAY BE REQUIRED FOLLOWING RECENT WATER INGRESS
- SIGNIFICANT CURRENT TRUSS DEFLECTIONS TO REMAIN
- TO BE READ IN CONJUNCTION W. SK240
- SEE NOTE ON PREVIOUS PAGE RE. GULF & SCREW

⚠ BOLT HOLES TO BE CUT IN EXISTING GIRDER WEB, CONTRACTOR TO DEVELOP A SAFE METHOD OF CONSTRUCTION TAKING INTO ACCOUNT THE HEIGHTENED RISK OF FIRE BREAK-OUT & ADJACENT TIMBERS

3 PAGES

Job Koko

Date 30/03/20

Title TIMBER TRUSS REMEDIAL DETAILS

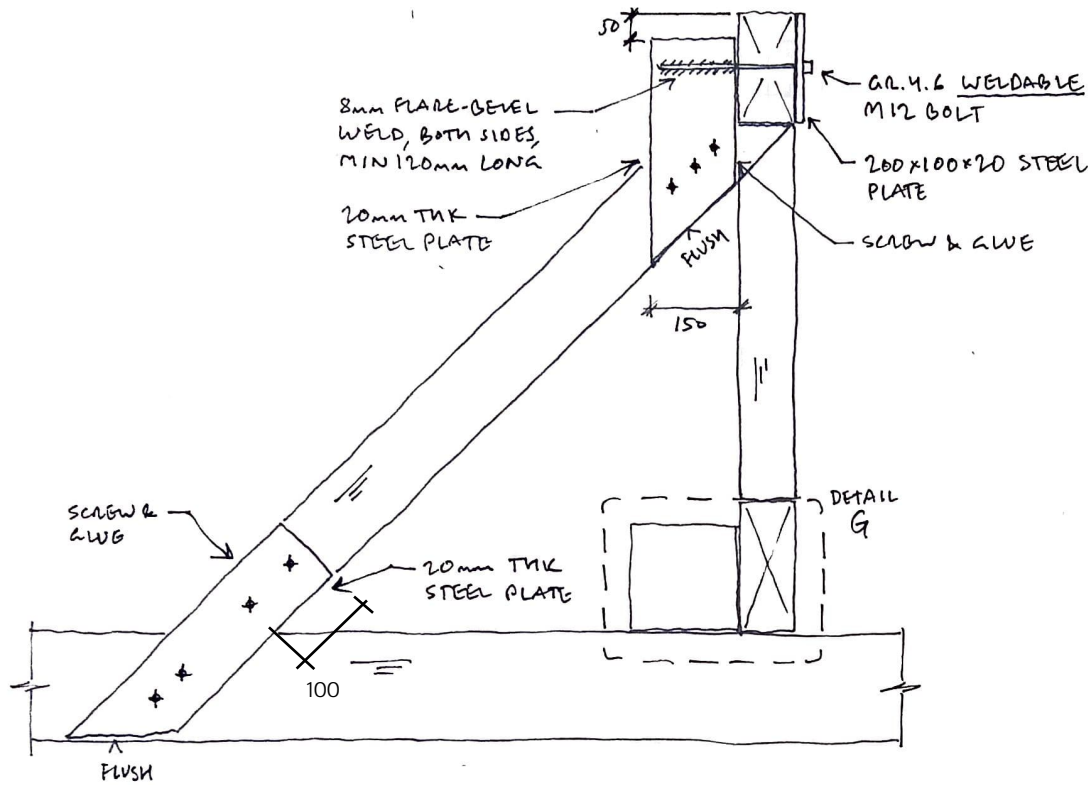
Eng ACS

Job No. 1444

Sheet SK241-2/3

Rev ID1

HEYNE
TILLET
STEEL



①

SEE PAGE 2
FOR GENERAL
NOTES

3 PAGES

Job	Koko	Date	30/03/20
Title	TIMBER TRUSS REMEDIAL DETAILS	Eng	GAS
Job No.	1444	Sheet	SK241-313
		Rev.	I 01

HEYNE
TILLET
STEEL