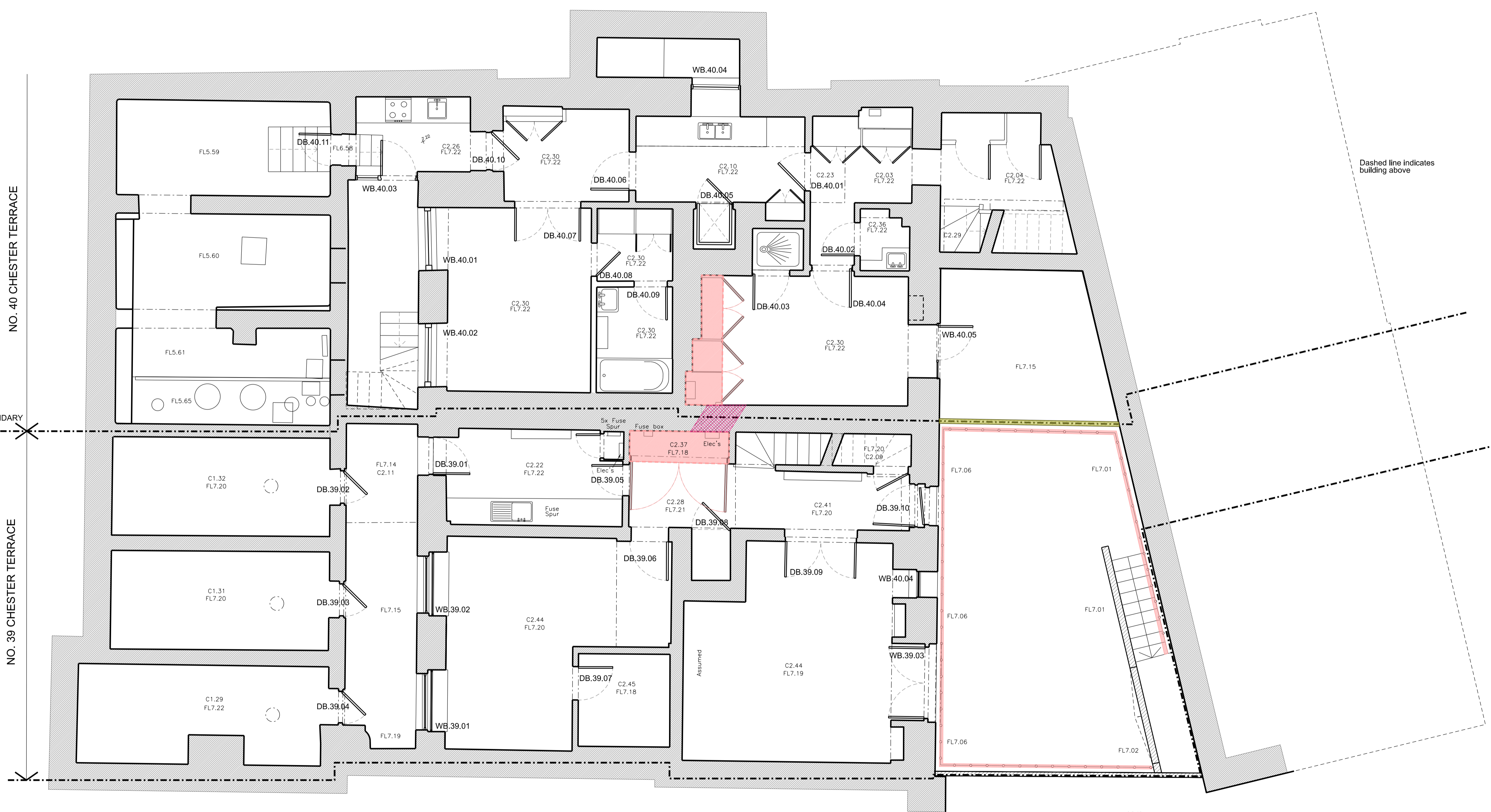


To scale for town planning purposes.  
Not for construction.

- Key for Strip Out & Demolition Works
- Removal of Structural Elements
  - Removal of Non-Structural Elements
  - Removal of Joinery Elements
  - Removal of Sanitary Elements & Finishes
  - Removal of Floor Finishes
  - Removal of Cornice
  - Removal of Lead Roof & lay new roof to new gradient as requested by The Crown Estate
  - Form new opening for new skylight
  - Removal of asphalt finish & relay new asphalt as requested by The Crown Estate
  - Waterproofing of Basement subject to inspection



Dashed line indicates building above

NO. 40 CHESTER TERRACE

NO. 39 CHESTER TERRACE

BOUNDARY LINE

Rev	Amendment	Date
B	For Planning	28.04.21
A	For Planning	19.04.21

Key Plan

**FOR PLANNING**

Client  
Jose & Daniela Neves

Project  
39 & 40 Chester Terrace  
London NW1 4ND

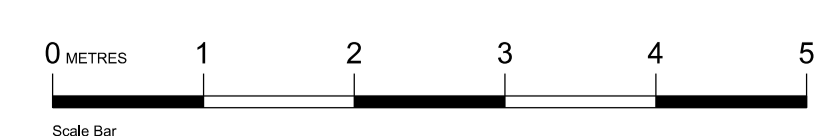
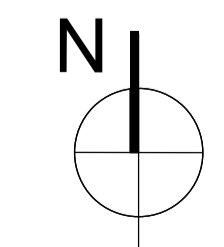
Title  
Proposed Strip Out & Demolition Works  
Lower Ground Floor Plans

Drawn By	Checked By	Scale	Date
GC	MG	1:50 @ A1	March 21
Drawing No	Revision		
1154/P/CN/En/50/001	B		

GROVES NATCHEVA ARCHITECTS

T: +44 (0)20 7937 7772  
E: info@grovesnatcheva.com  
W: www.grovesnatcheva.com

6 Kensington Court Mews London UK W8 5DR

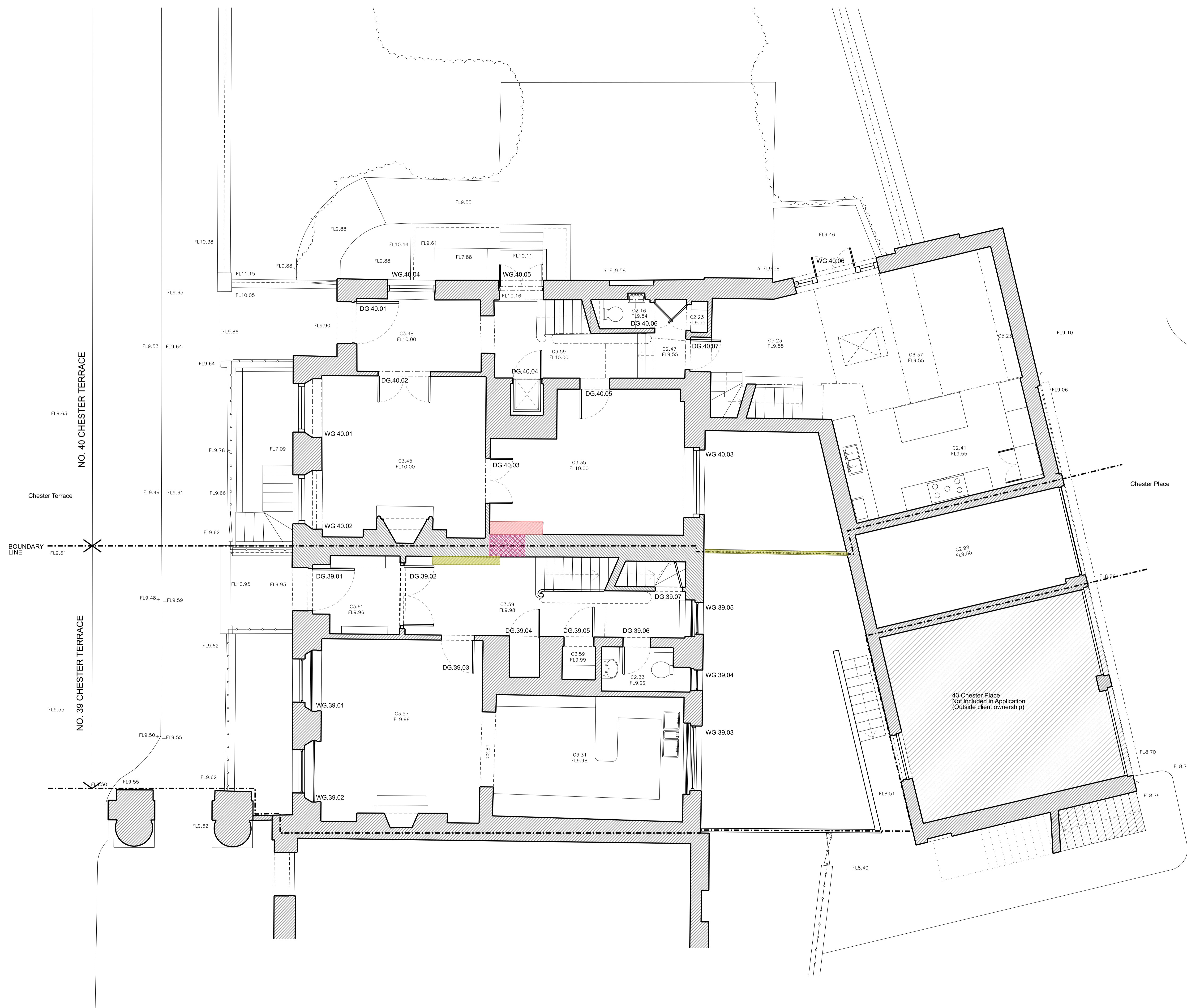


LOWER GROUND FLOOR PLAN

To scale for town planning purposes.  
Not for construction.

**Key for Strip Out & Demolition Works**

- Removal of Structural Elements
- Removal of Non-Structural Elements
- Removal of Joinery Elements
- Removal of Sanitary Elements & Finishes
- Removal of Floor Finishes
- Removal of Cornice
- Removal of Lead Roof & lay new roof to new gradient as requested by The Crown Estate
- Form new opening for new skylight
- Removal of asphalt finish & re-lay new asphalt as requested by The Crown Estate
- Waterproofing of Basement subject to inspection



Rev	Amendment	Date
B	For Planning	28.04.21
A	For Planning	19.04.21

Key Plan

**FOR PLANNING**

Client  
**Jose & Daniela Neves**

Project  
**39 & 40 Chester Terrace  
London NW1 4ND**

Title  
**Proposed Strip Out & Demolition Works  
Existing Ground Floor Plans**

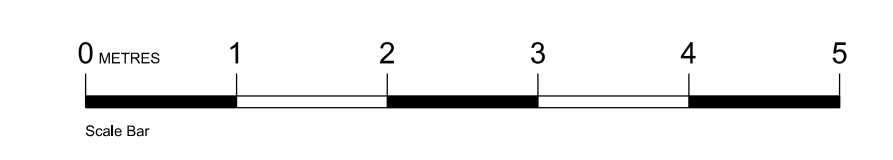
Drawn By	Checked By	Scale	Date
GC	MG	1:50 @ A1	March 21
Drawing No	Revision		
1154/P/CN/En/50/002	B		

**GROVES NATCHEVA ARCHITECTS**

T: +44 (0)20 7937 7772  
E: info@grovesnatcheva.com  
W: www.grovesnatcheva.com

6 Kensington Court Mews London UK W8 5DR

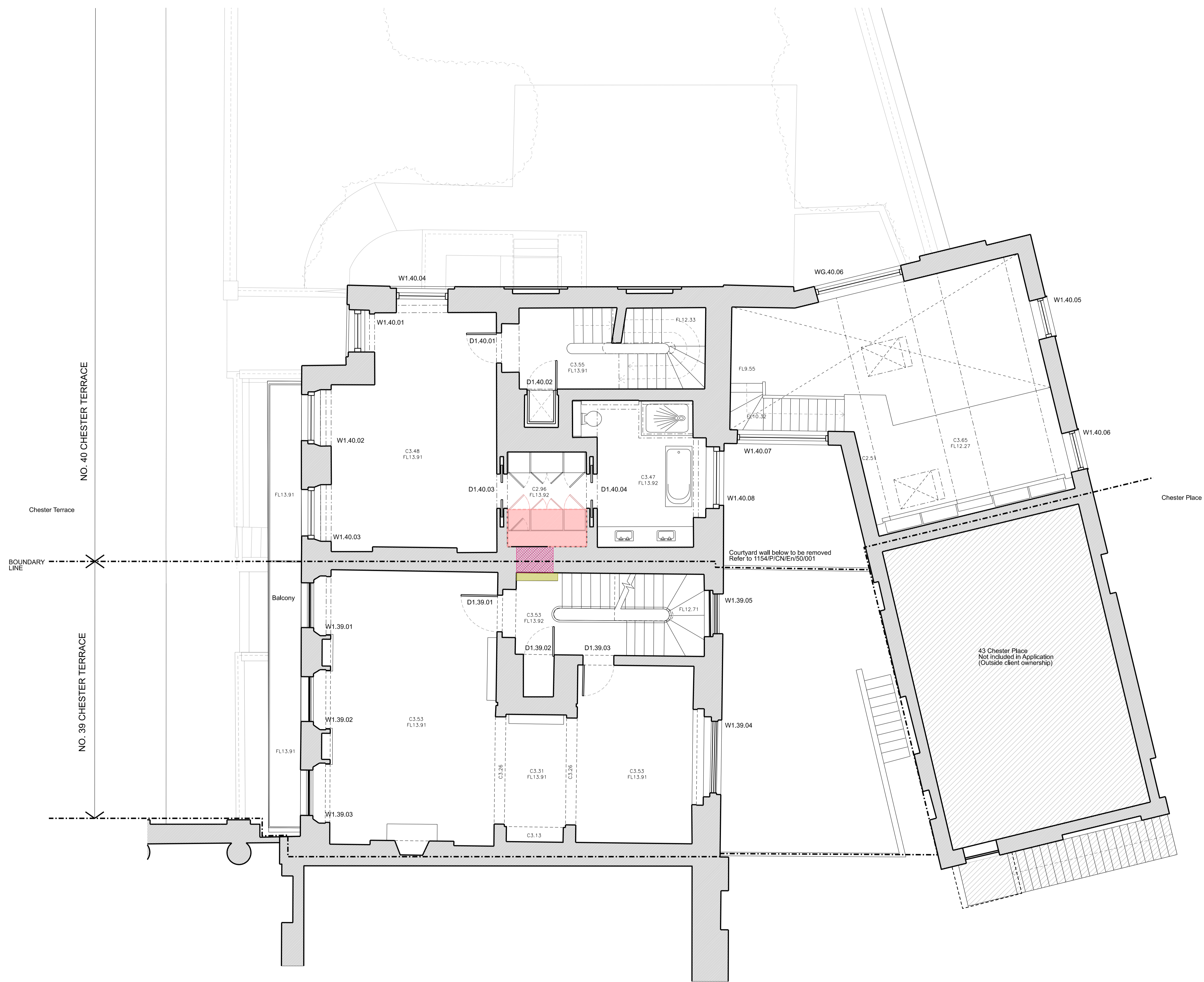
**GROUND FLOOR PLAN**



To scale for town planning purposes.  
Not for construction.

**Key for Strip Out & Demolition Works**

- Removal of Structural Elements
- Removal of Non-Structural Elements
- Removal of Joinery Elements
- Removal of Sanitary Elements & Finishes
- Removal of Floor Finishes
- Removal of Cornice
- Removal of Lead Roof & lay new roof to new gradient as requested by The Crown Estate
- Form new opening for new skylight
- Removal of asphalt finish & re-lay new asphalt as requested by The Crown Estate
- Waterproofing of Basement subject to inspection



Rev	Amendment	Date
A	For Planning	19.04.21
Key Plan		

**FOR PLANNING**

Client  
**Jose & Daniela Neves**

---

Project  
**39 & 40 Chester Terrace  
London NW1 4ND**

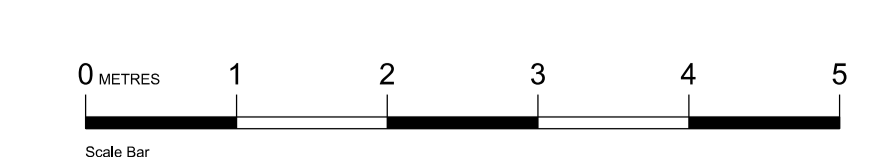
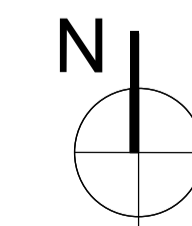
---

Title  
**Proposed Strip Out & Demolitions Works  
Existing First Floor Plans**

---

Drawn By	Checked By	Scale	Date
GC	MG	1:50 @ A1	March 21
Drawing No	Revision		
1154/P/CN/En/50/003	A		

**GROVES NATCHEVA ARCHITECTS**



FIRST FLOOR PLAN