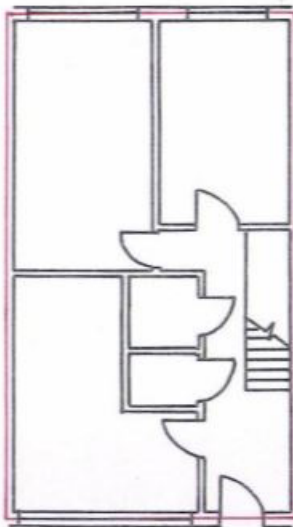


3, Woodhall
Robert Street, N.W.1.

← 5.73m →

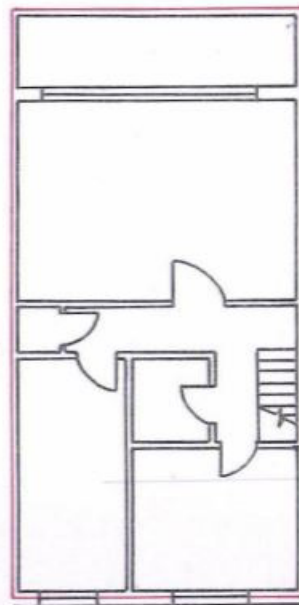
← 5.73m →



LOWER GROUND FLOOR

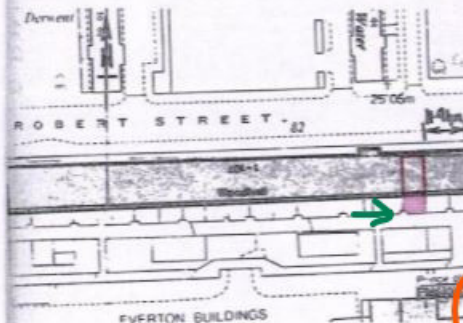
↑ 1.80m

10.33m



UPPER GROUND FLOOR

Handwritten signature



Not to scale.

The Ordnance Survey extract defines the block known as WOODHALL outlined in heavy black. The area delineated in red thereon shows the approximate position of the demise within the block. The extent of No. 3, WOODHALL to be ascertained from the large plan(s).

The large plan identifies by red outline at floor level the demised premises.

Garden land included in the demise is shown coloured pink on the Ordnance Survey extract.

REF N^o 2400311315