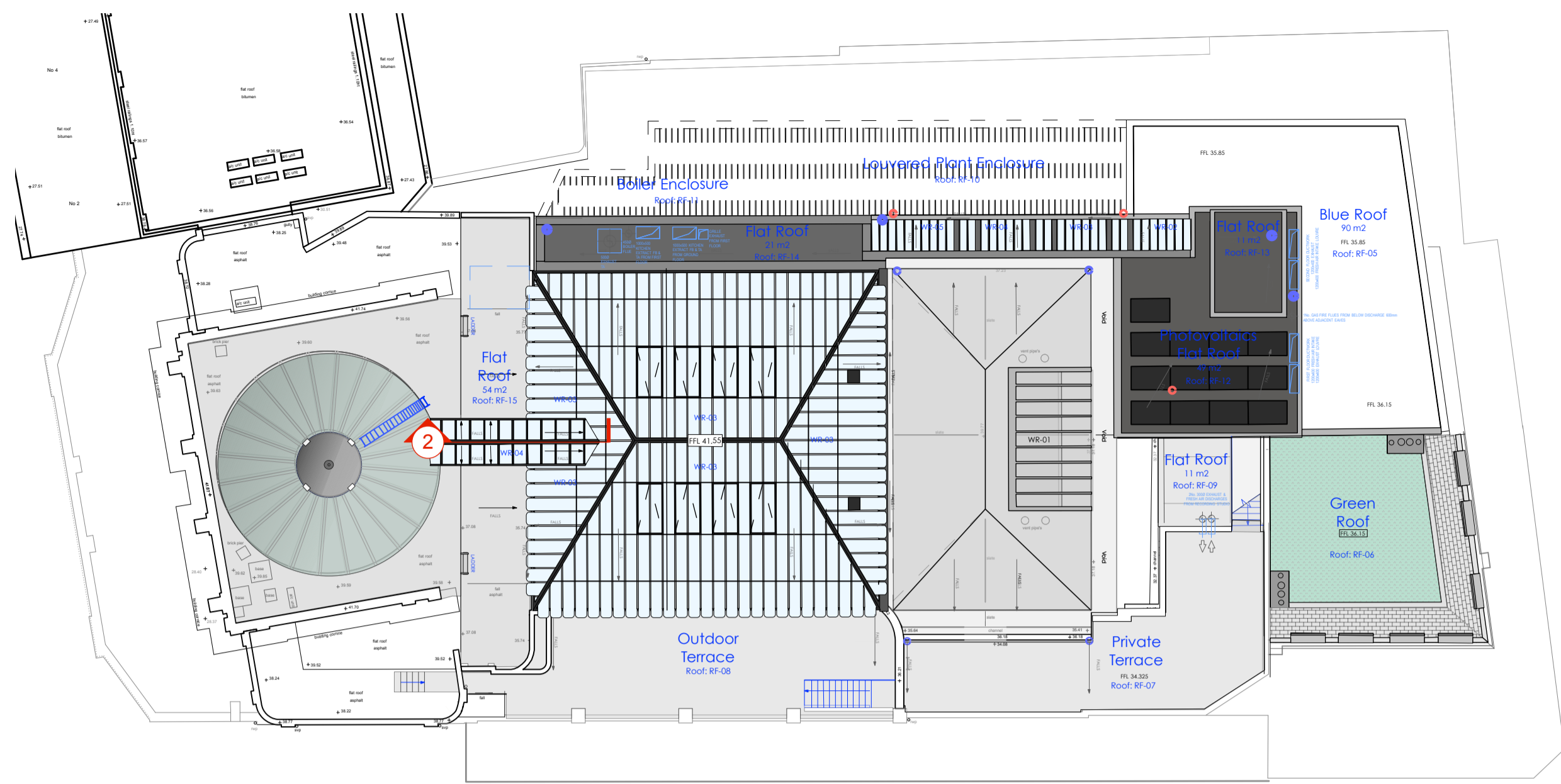
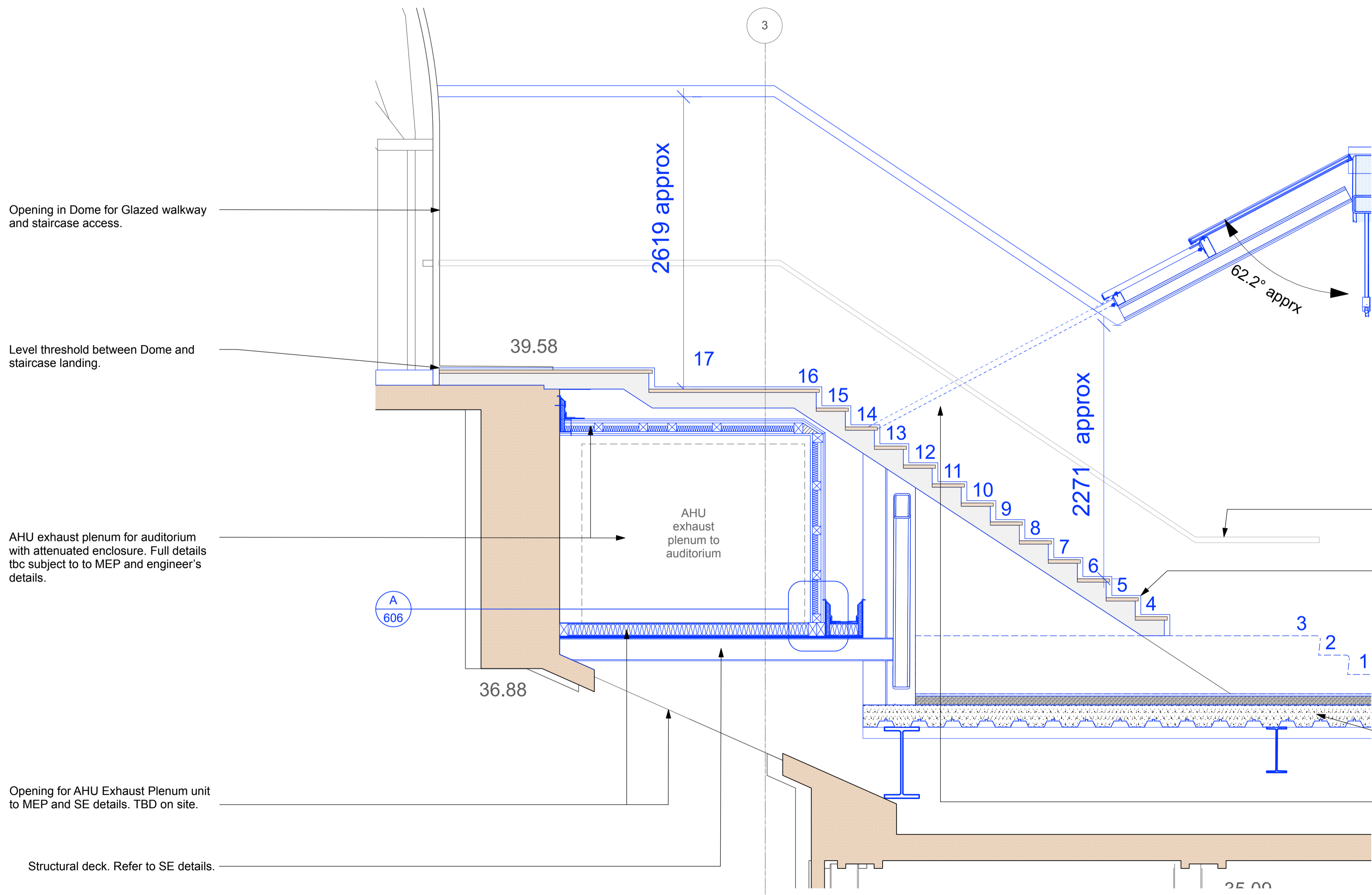


Copyright: All rights reserved. This drawing must not be reproduced without permission.
 Only the original drawing should be relied upon. Contractors, subcontractors and suppliers must verify all dimensions on site before commencing any work or making any shop drawings.
 All shop drawings to be submitted to the architect for comment prior to fabrication.
 This drawing is to be read in conjunction with the Architect's specification, bills of quantities / schedules, structural, mechanical & electrical drawings and all discrepancies are to be reported to the architect.
 Do not scale from this drawing. Dimensions are in millimetres unless otherwise stated.

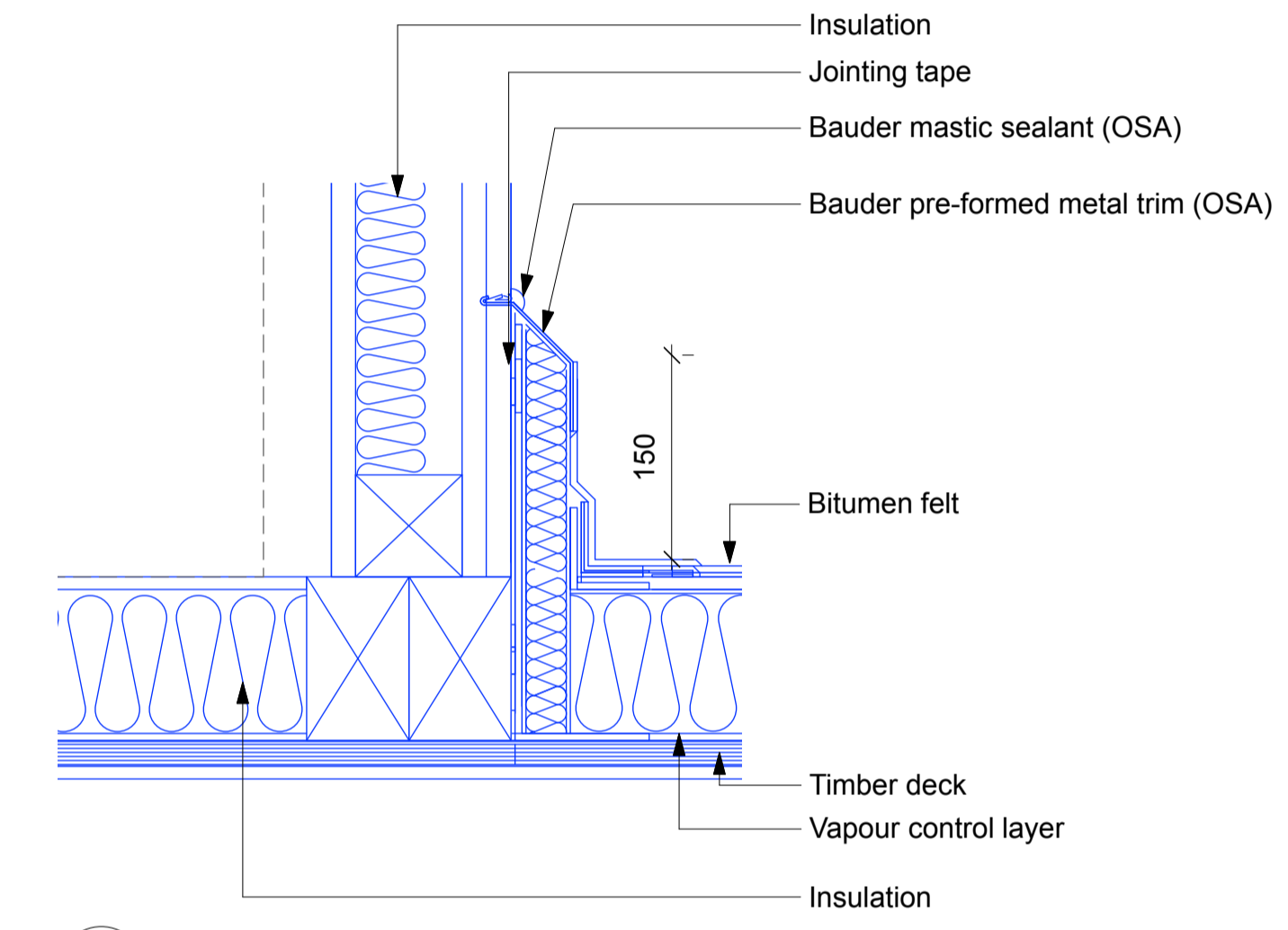
revision / date / amendments



1 Proposed Roof Plan
 Scale: 1:200



2 Proposed Section through Glass Pavilion Staircase + AHU Plant
 Scale: 1:25



A Proposed Structural Plant deck wall detail
 Scale: 1:5

- Balustrade to interior design details.
- Steel staircase with linear stringer, raised 20mm above tread. Concrete infill tread with 30mm floor finish zone. Structural detail to SE details. Tread finishes to interior designer details.
- Refer to Floor build up detail FT11 - Drawing no. AHA-KKC-DET-858
- Structural opening for steel staircase. Refer to SE details.

02.02.18

STAGE 4

Archer Humphryes Architects

Basement
 Central House
 142 Central Street
 London, United Kingdom
 EC1V 8AR
 T: +44 (0) 20 7251 8555

project title		KOKO + Hope & Anchor + Bayham Place Camden, London	
drawing title	scale	date	
Proposed Glazed Walkway + Plant Details 2	1:25	11.08.17	
drawing number	revision	drawn	checked
AHA/KKC/DET/606	-	FR	DA