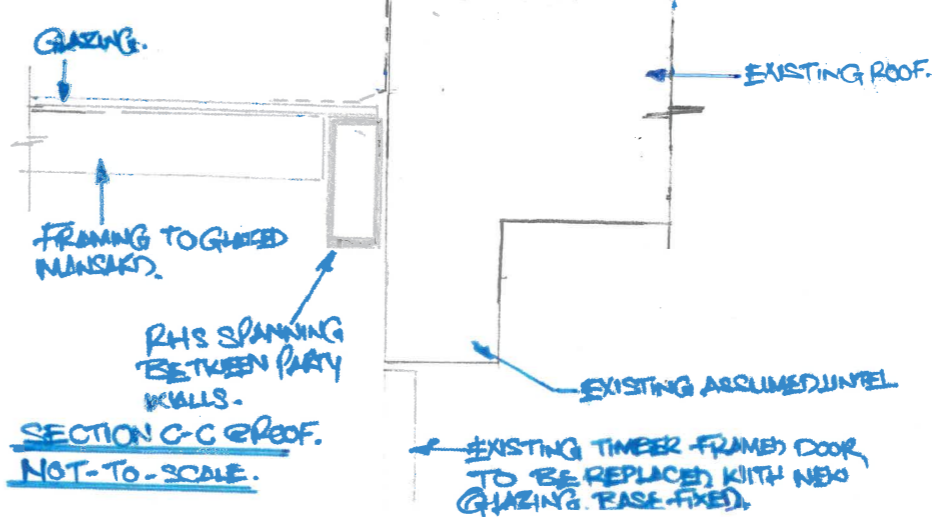
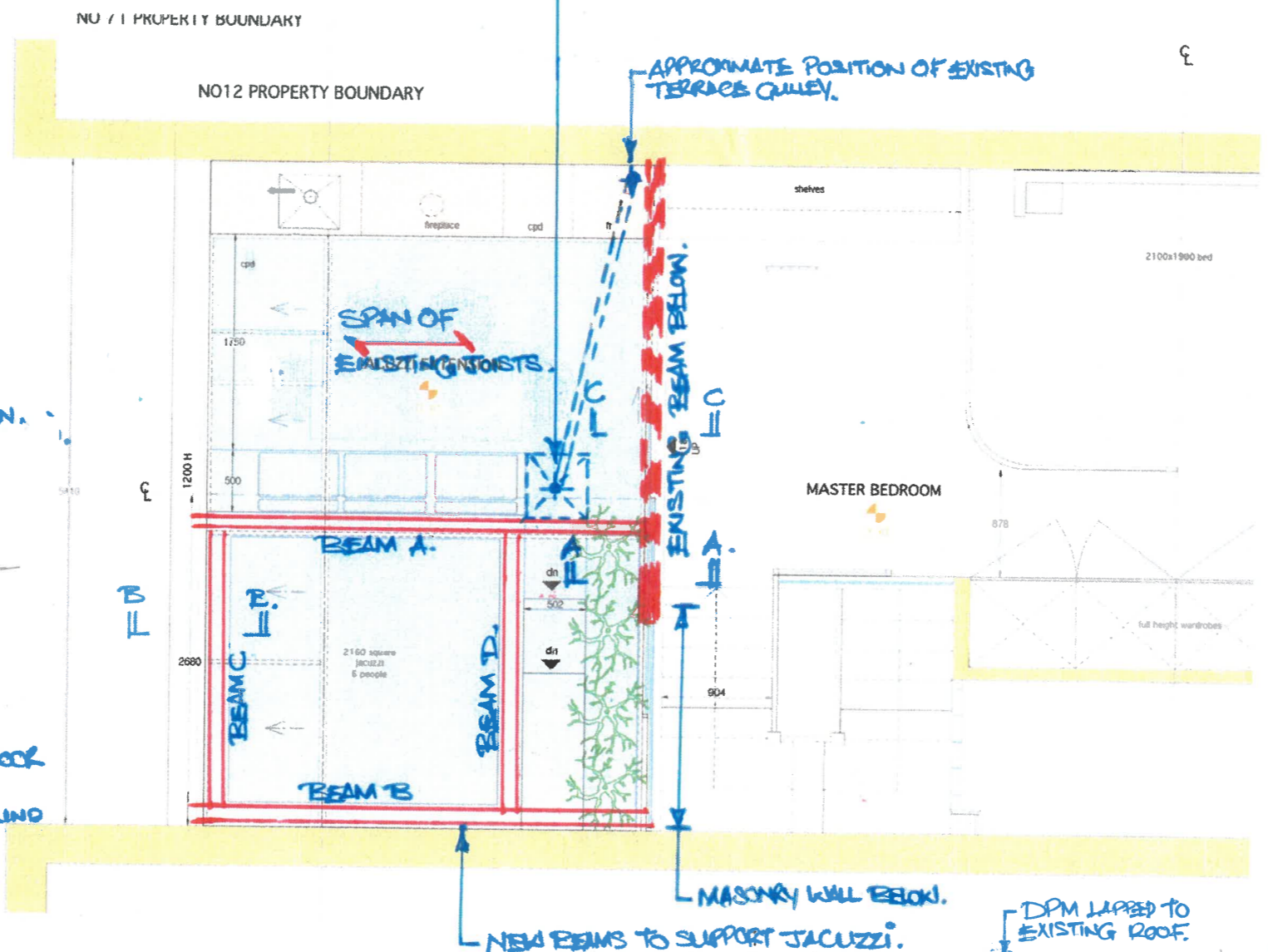
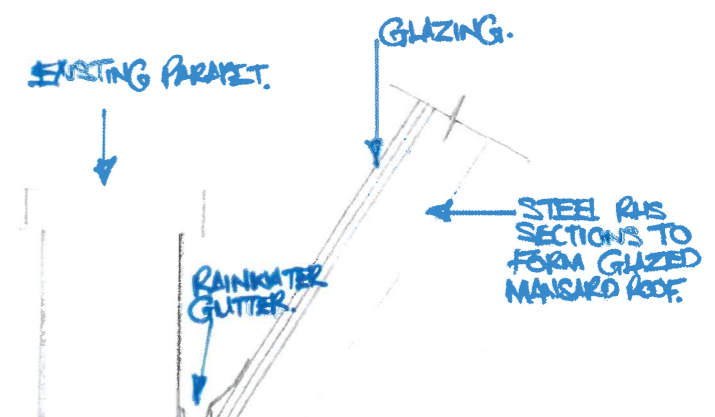


NEW DRAINAGE GULLEY @ BOTTOM OF STEPS.  
 TILES LAID TO FALLS @ 1:80.  
 STEPS TO BE LAID TO FALLS, NEW DRAINAGE GULLEY TO CONNECT INTO EXISTING ROOF TERRACE GULLEY.



# HIHACK ENGINEERING

12 CAMDEN SQAURE, NW1

PRELIMINARY STRUCTURAL PROPOSALS

FOR PLANNING ONLY

1186-SK001

NOT TO SCALE

APRIL 2021