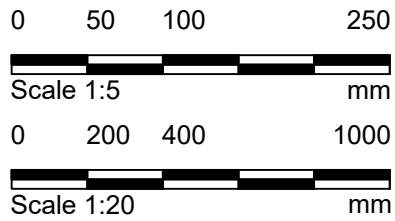
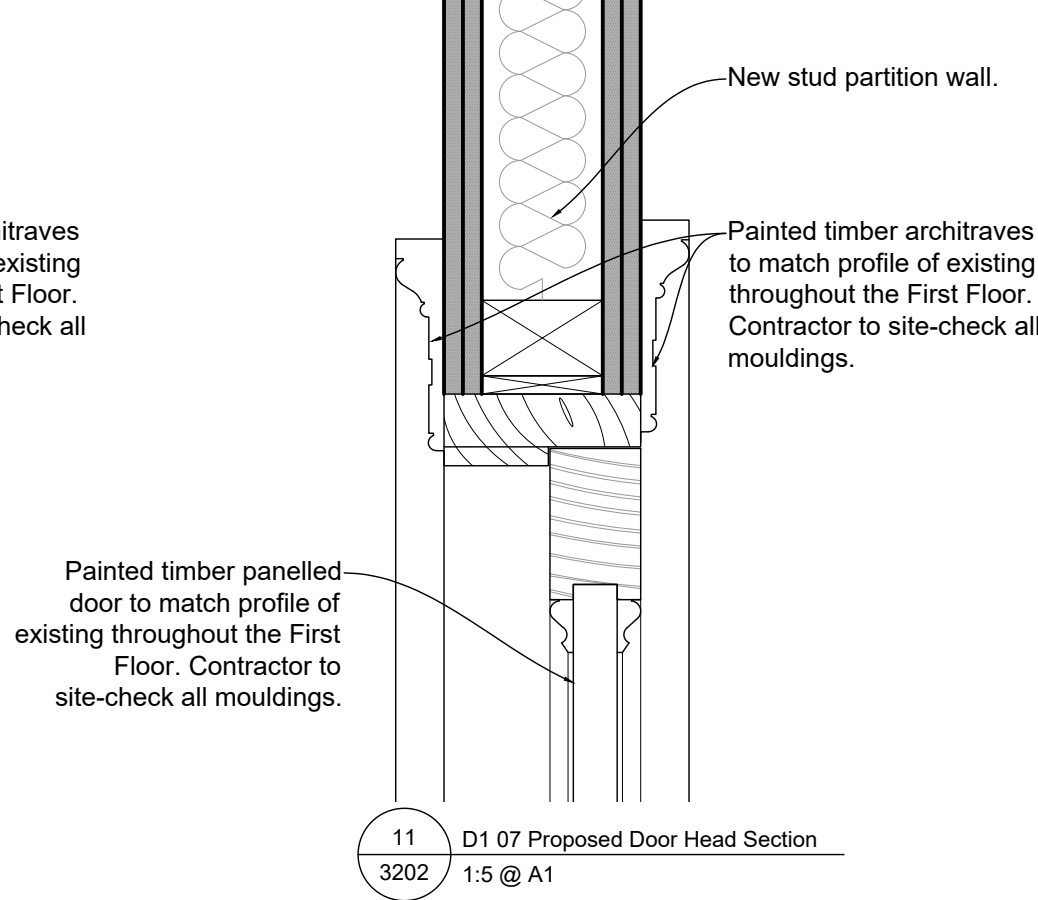
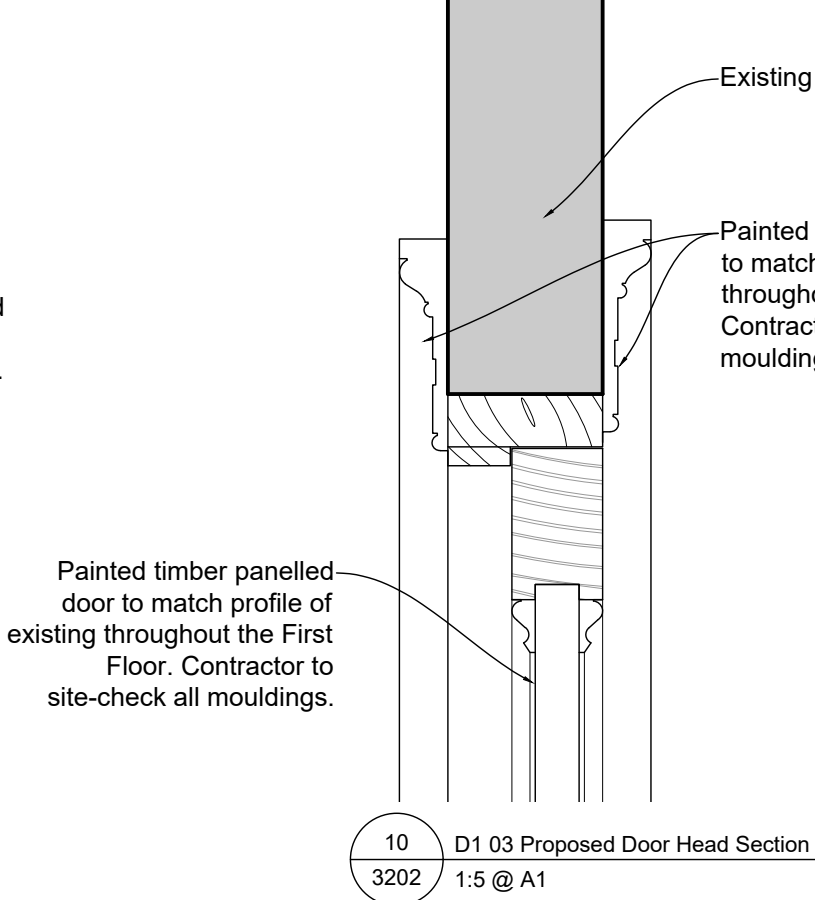
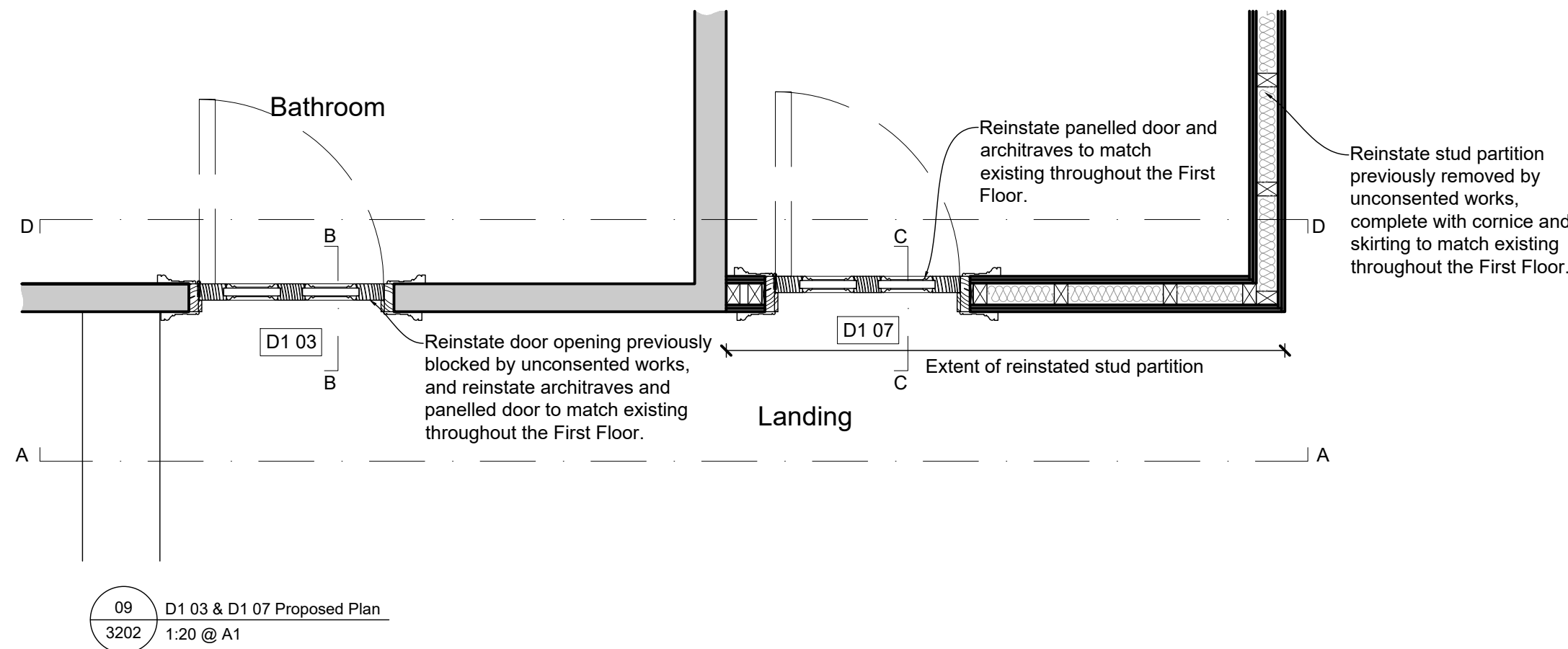
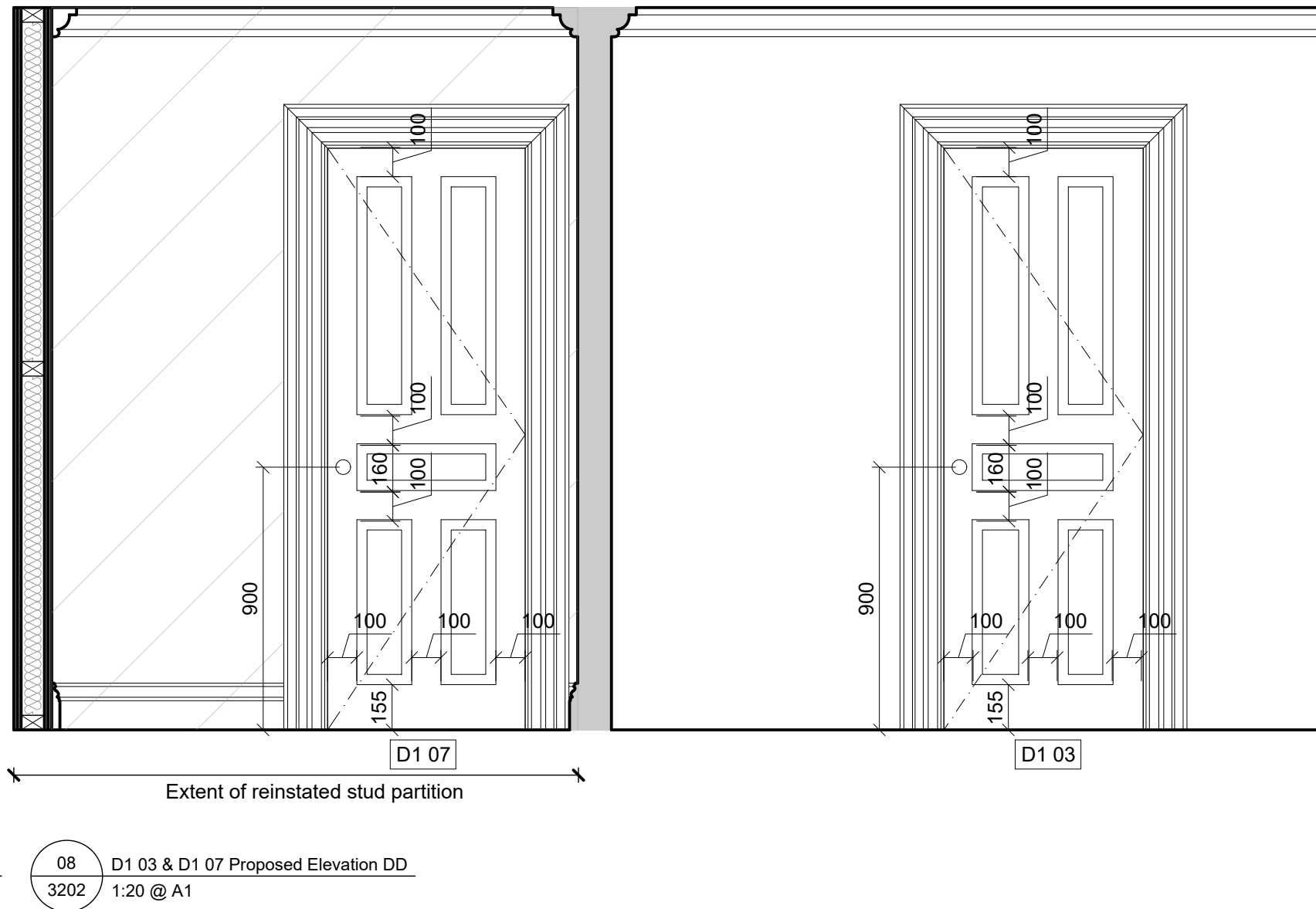
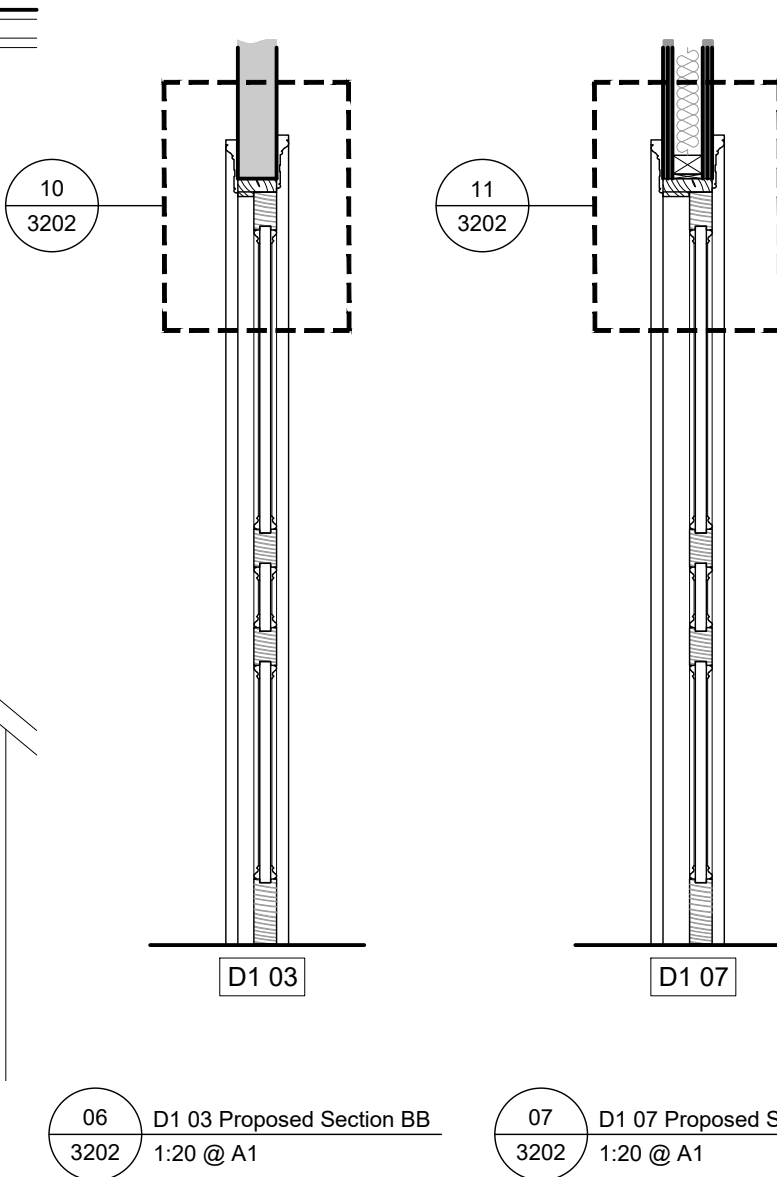
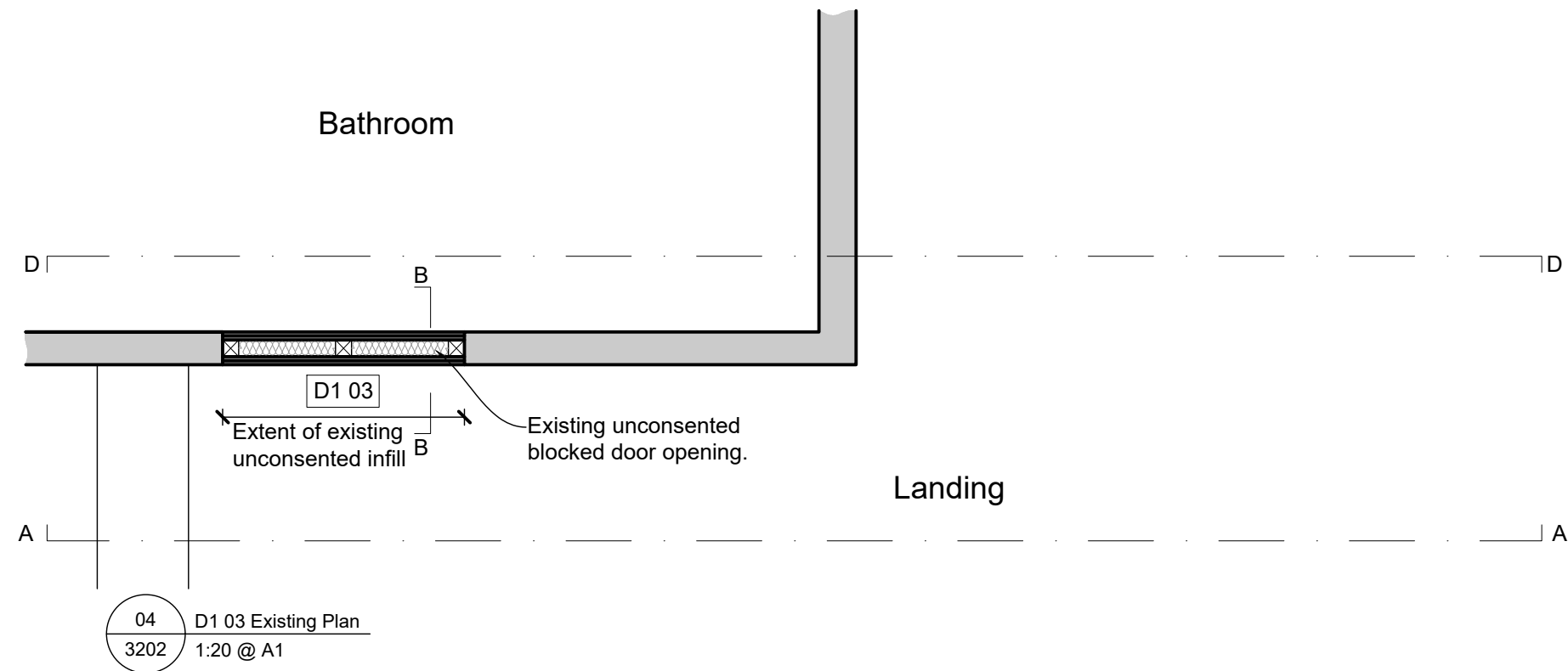


- GENERAL NOTES**
- Contractor to site-check all dimensions.
 - Contractor to site-check all mouldings and match existing as noted.

- Notes
1. Any dwg format drawing is to be read in conjunction with and at the scale of the accompanying pdf.
 2. Where colours other than black or grey are used, the drawing must be plotted in colour.
 3. For status 'C' (Construction) drawings all dimensions are to be checked on site by the contractor, scaling is for Local Authority purposes only.
 4. Unless otherwise indicated, all dimensions are in millimeters.
 5. All information on this drawing is to be read in conjunction with the relevant Donald Insall Associates specification and trade contractors' drawings and information by specialists.
 6. In the event of any discrepancy, please contact us immediately.
 7. This drawing may contain survey information by others and is to be used solely for the purposes for which it was issued.
 8. These are uncontrolled documents issued for information purposes only. If you have any queries regarding the drawings, please contact DIA immediately. Please note DIA cannot be held responsible for any errors arising from changes made to an uncontrolled dwg file.
 9. Please note DIA cannot be held responsible for any errors arising from changes made to an uncontrolled dwg file.
- © 2017 DONALD INSALL ASSOCIATES LTD

Drawing Status					
F	Feasibility	B	Building Control	T	Tender
S	Sketch Design	D	Developed Design	C	Construction
P	Planning	M	Measurement	R	Record



Rev	Date	Dwn	Auth	Revision
00	20.01.2021	ERH	RMD	Initial Issue

26 Park Village East
London

Existing and Proposed Doors
D1 03 & D1 07

Project	PVE26.02			No	3202	
Scale (A1)	1:20, 5			Status	3P	Revision 00

Donald Insall Associates
Chartered Architects and Historic Building Consultants

12 Devonshire Street, London W1G 7AB
(+44) 020 7245 9888
london@insall-architects.co.uk