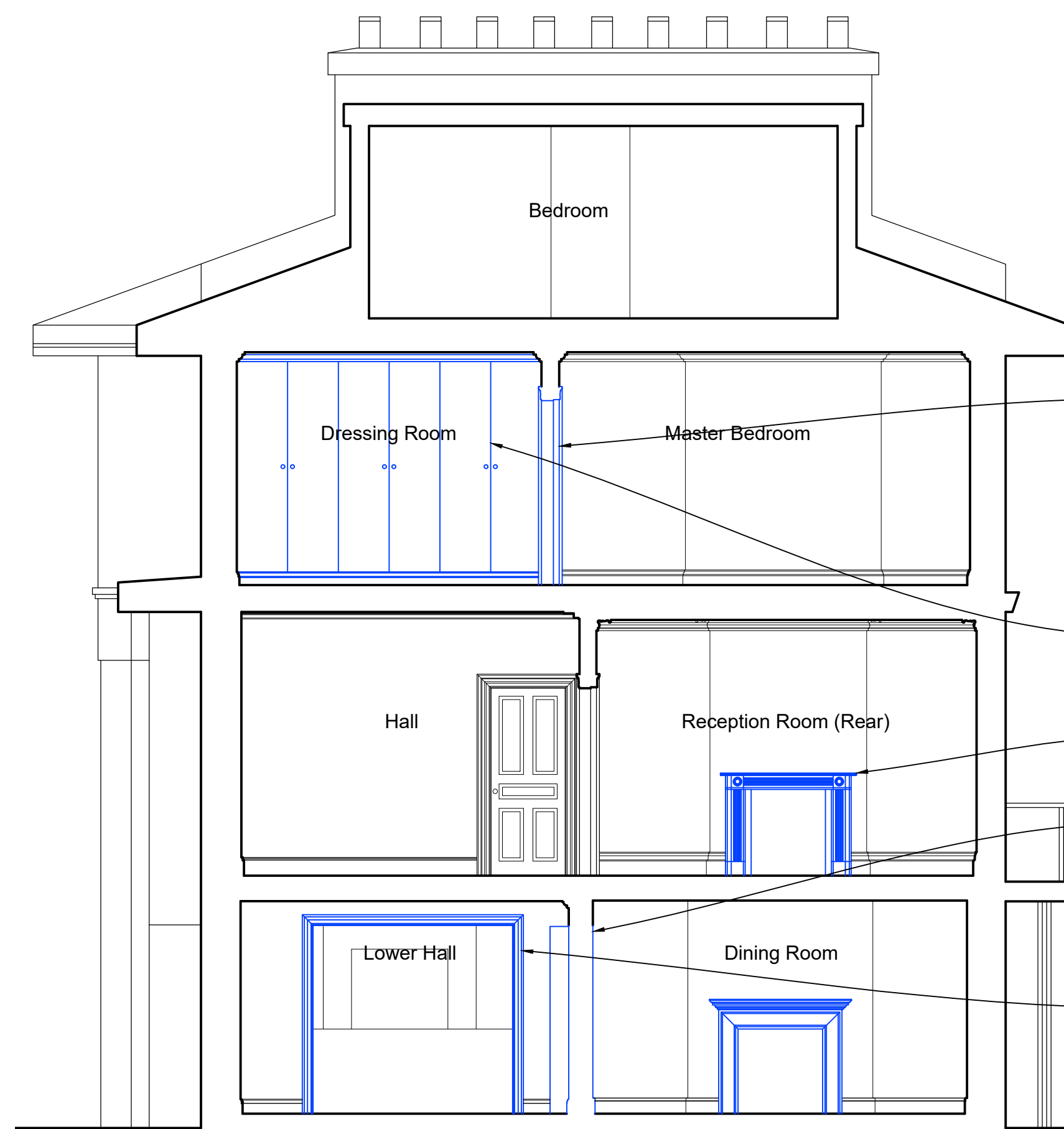


01 Section AA - Prior to Completion of Unconsented Works
1100 1:50 @ A1



02 Section AA As Existing - Post Completion of Unconsented Works
1100 1:50 @ A1

- New opening formed between Bedroom and Dressing Room with panelled doors and architraves to match existing adjacent
- Fitted wardrobes installed post-2008.
- New chimney piece.
- Door opening from Hall to Dining Room covered over on Dining Room side.
- Opening from Hall to Kitchen widened.

GENERAL NOTES

- Based on survey data received from client.
- Modern glazed doors have been replaced with painted panelled doors generally.

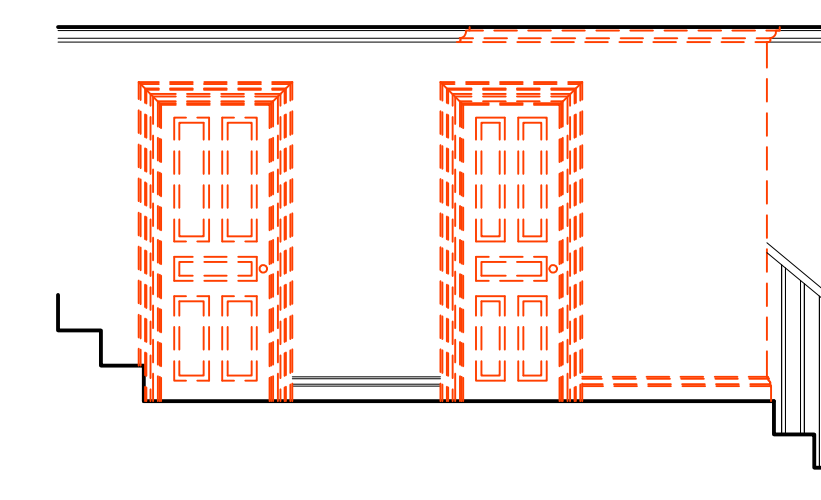
GENERAL NOTES

- Read all drawings in conjunction with associated specification, schedules and drawings.
- Read all the notes on this drawing.
- Based on survey information by others.

HATCH KEY

Document to be printed/read in colour only.

- Fabric that was removed as part of unconsented works
- New fabric implemented as part of unconsented works
- Existing Fabric
- Assumed line of existing structure

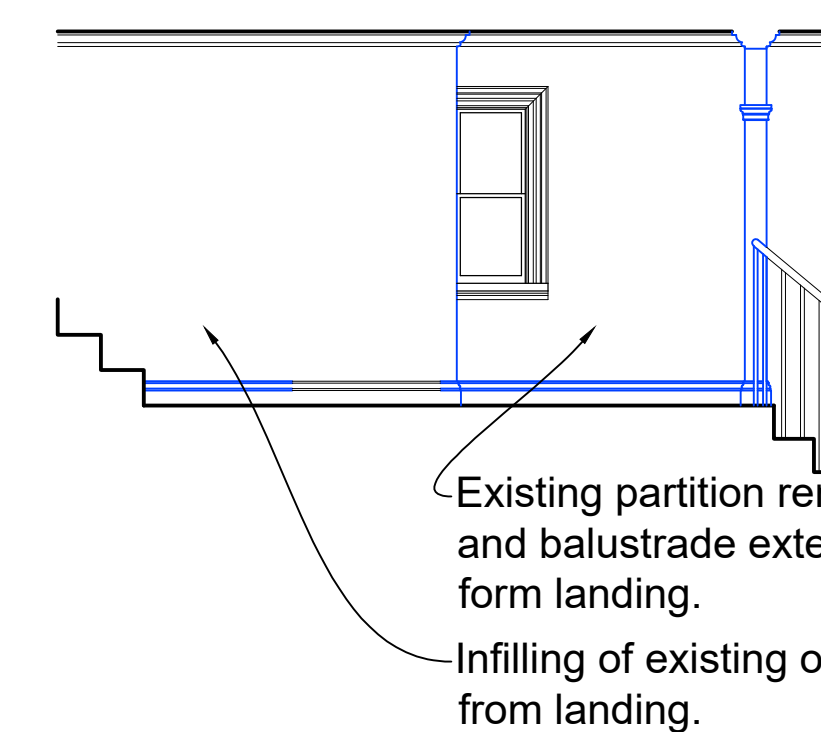


05 Section CC - Prior to Completion of Unconsented Works - 1:50 @ A1



04 Section BB As Existing - Post Completion of Unconsented Works
1100 1:50 @ A1

- Partitions and doors rearranged to landing and Bathroom.
- New opening formed between Bedroom and Dressing Room with panelled doors and architraves to match existing adjacent
- Existing partition removed and balustrade extended to form landing.
- Fitted wardrobes installed post-2008.
- Existing opening on Drawing Room side boarded over.
- Door opening from Hall to Dining Room covered over on Dining Room side.
- Enlarged opening from Lower Hall to Kitchen.
- Screen doors removed.



06 Section CC As Existing - Post Completion of Unconsented Works - 1:50 @ A1



03 Section BB - Prior to Completion of Unconsented Works
1100 1:50 @ A1

Notes

- Any dwg format drawing is to be read in conjunction with and at the scale of the accompanying pdf.
- Where colours other than black or grey are used, the drawing must be plotted in colour.
- For status 'C' (Construction) drawings all dimensions are to be checked on site by the contractor, scaling is for Local Authority purposes only.
- Unless otherwise indicated, all dimensions are in millimeters.
- All information on this drawing is to be read in conjunction with the relevant Donald Insall Associates specification and trade contractors' drawings and information by specialists.
- In the event of any discrepancy, please contact us immediately.
- This drawing may contain survey information by others and is to be used solely for the purposes for which it was issued.
- These are uncontrolled documents issued for information purposes only. If you have any queries regarding the drawings, please contact DIA immediately.
- Please note DIA cannot be held responsible for any errors arising from changes made to an uncontrolled dwg file.

© 2017 DONALD INSALL ASSOCIATES LTD

Drawing Status		Building Control		Tender	
F	Feasibility	B	Building Control	T	Tender
S	Sketch Design	D	Developed Design	C	Construction
P	Planning	M	Measurement	R	Record

Rev	Date	Dwn	Auth	Revision
00	11.01.2021	ERH	RMD	Initial Issue

26 Park Village East
London

Sections
Prior to and Post Completion of
Unconsented Works

Project	PVE26.02	No	1100
Scale (A1)	1:50	Status	3P
		Revision	00

Donald Insall Associates
Chartered Architects and Historic Building Consultants

12 Devonshire Street, London W1G 7AB
(+44) 020 7245 9888
london@insall-architects.co.uk

0 0.5 1 2.5
Scale 1:50 m