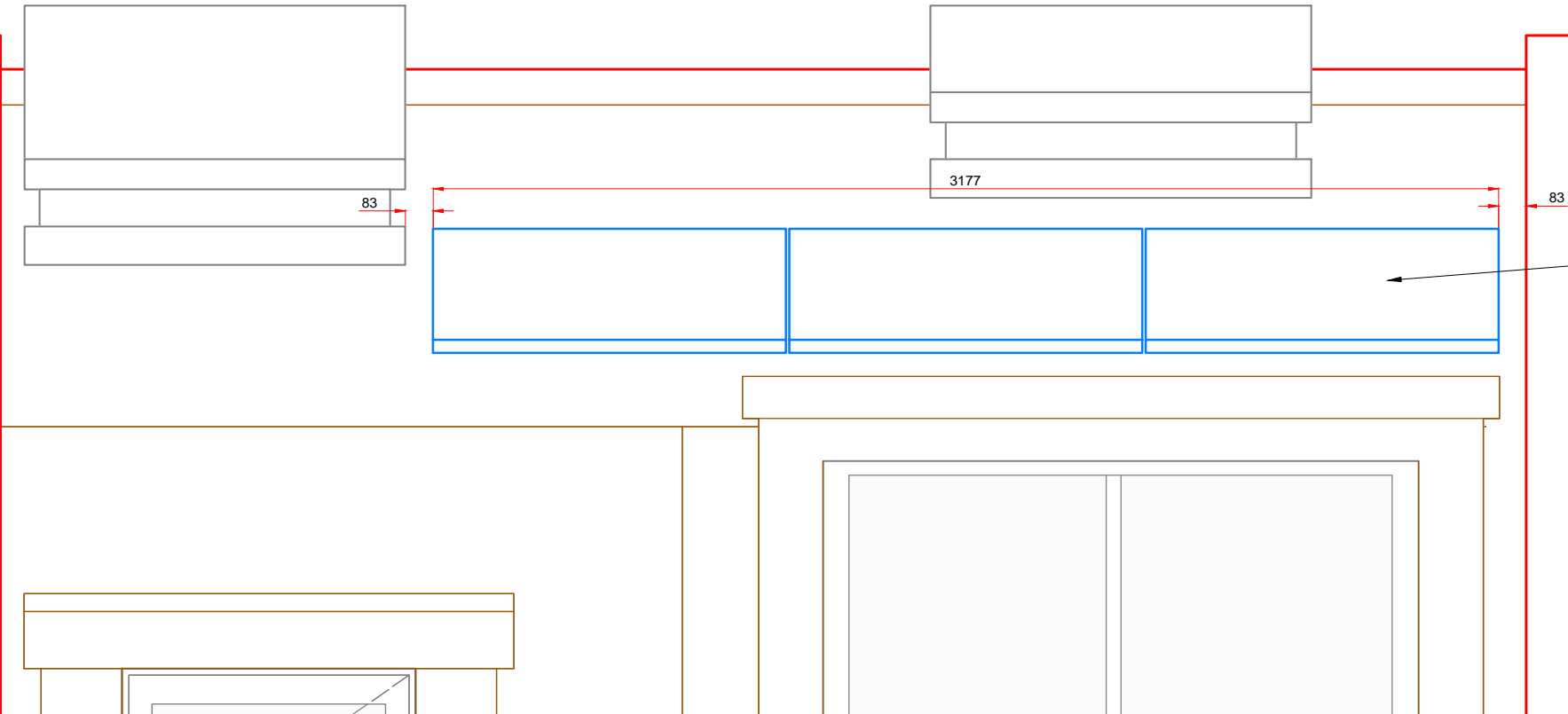
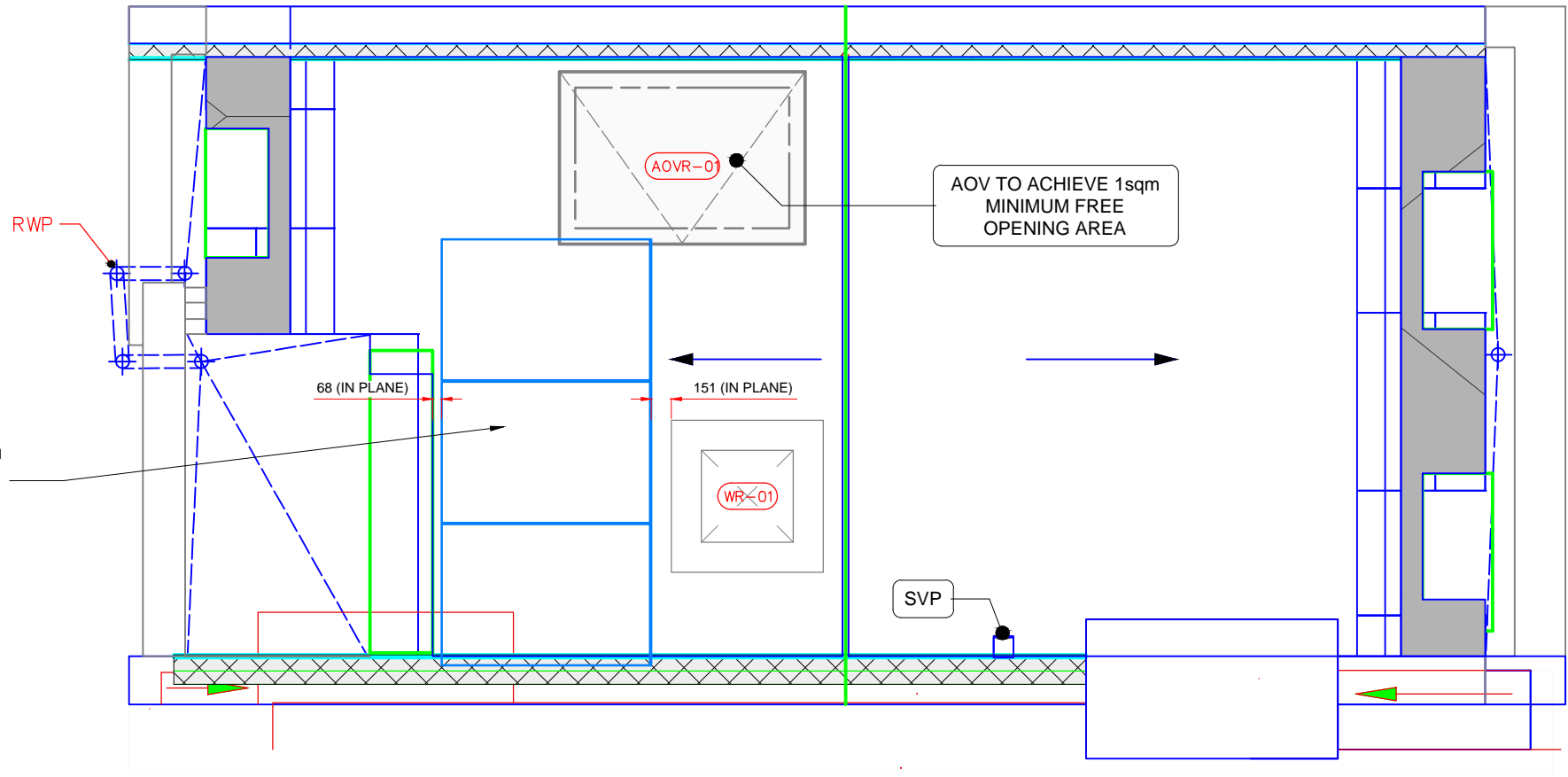


REAR ELEVATION: SCALE 1:20



3 x PANASONIC VBHN340SJ53
340Wp SOLAR PV MODULES ON
VALKPITCHED RAIL MOUNTING
SYSTEM (BRACKETS TO BE
WEATHERED BY ROOFING
CONTRACTOR); 1.02kWp



3 x PANASONIC VBHN340SJ53
340Wp SOLAR PV MODULES ON
VALKPITCHED RAIL MOUNTING
SYSTEM (BRACKETS TO BE
WEATHERED BY ROOFING
CONTRACTOR); 1.02kWp

AOV TO ACHIEVE 1sqm
MINIMUM FREE
OPENING AREA

SVP

Scan our QR code to register your
system on the C3 Hub for access to
all your Operations & Maintenance
information and to redeem your
10% service discount code!



TOTAL SYSTEM: 3 x 340Wp PANASONIC VBHN340SJ53 PV MODULES (1590 x 1053 x 40mm); 1.02kWp

FOR APPROVAL

Drawing N°		GO-ST001		
TITLE:				
Solar PV Layout				
Client:	T.B.C.			
Project:	Goodge Street			
Address:	9 Goodge Street., London, W1T 2PE			
SCALE	REV	DRAWN	CHKD	DATE
1:50	A	MB	IR	11/02/2021



Solar PV System at: 9 Goodge Street, London, W1T 2PE

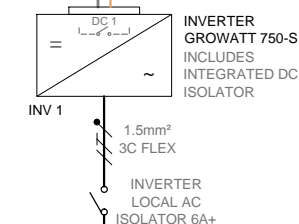
TOTAL SYSTEM 1.02kWp
INVERTER RATED 0.75kW
3 x PANASONIC
VBHN340SJ53



ROOF
1.02 kWp PV ARRAY
3 x PANASONIC VBHN340SJ53



INVERTER
LOCATION

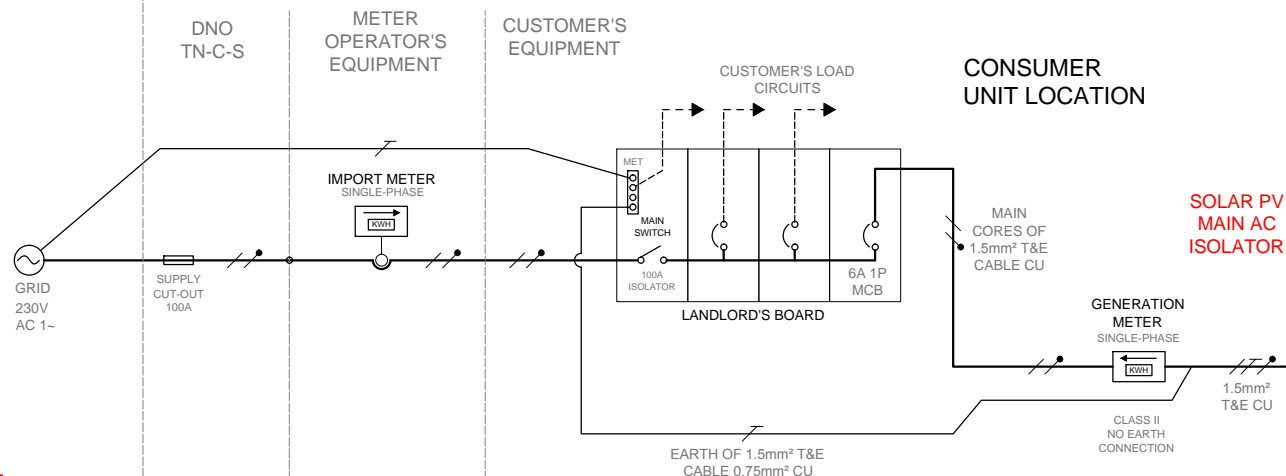


1.5mm² T&E CU
(TOTAL CIRCUIT
LENGTH FROM
ORIGIN NOT TO
EXCEED 115m)

6A+ 2P
LOCKABLE

SOLAR PV
MAIN AC
ISOLATOR

CONSUMER
UNIT LOCATION



FOR APPROVAL

REV: 0 DATE:11/02/2021

Scan our QR code to register
your system on the C3 Hub for
access to all your Operations &
Maintenance information and to
redeem your 10% service
discount code!



Installer:



61 London Road, Maidstone
ME16 8TX
+44 (0)1732 810 303
office@carbon3.co.uk
www.carbon3.co.uk

Start-up sequence:

- 1) Ensure that all isolators and breakers in the Distribution Board area for the Solar PV installation are "on"
- 2) Ensure that the DC isolator(s) next to or on the inverter(s) are set to "1"("on")
- 3) Turn on the local mains AC isolator(s) next to the inverter(s)
- 4) Assuming sufficient daylight for generation, the "ON" or "Operation" light or the display will indicate that the system is functioning correctly

Disconnection Sequence:

- 1) Turn off the mains AC at the isolator(s) next to the inverter(s).
The inverter(s) will automatically and safely disconnect.
- 2) Turn off the DC isolator(s) next to or on the inverter(s) (set to "0")
- 3) Wait 5 minutes before removing cover

ER G98 Inverter Settings:

- 1) Over Voltage 262.2V (1s) / 273.7V (0.5s)
- 2) Under Voltage 184V (2.5s)
- 3) Over Frequency 51.5Hz (15 min) / 52Hz (0.5s)
- 4) Under Frequency 47.5Hz (20s) / 47Hz (0.5s)
- 5) Loss of Supply ROCOF 1.0Hz/sec (0.5s)
- 6) Reconnection Time 20sec minimum