



**PROPOSED PERMEABLE BLOCK PAVING**  
 Product: Tobermore Hydropave Tegula  
 Sizes: 208x173x60mm  
 173x173x60mm  
 Colour: Bracken  
 Or similar approved



**PROPOSED PEDESTRIAN PERMEABLE BLOCK PAVING**  
 Product: Tobermore Hydropave Tegula  
 Sizes: 208x173x60mm  
 Colour: Natural  
 Or similar approved



**PROPOSED CAR PARKING DEMARCATION**  
 Product: Tobermore Hydropave Tegula  
 Sizes: 208x173x60mm  
 Colour: Charcoal  
 Or similar approved



**PROPOSED KERBSTONE**  
 Product: Tobermore Country Kerb  
 Size: 255x125x915mm  
 Colour: Granite  
 Or similar approved



**PROPOSED BIN STORE**  
 Product: Prestige Slatted Bin Store  
 Size: 1290x800x900mm  
 Colour: Radiata Pine with a teak stain finish  
 To fit a 140l wheellie bin, a free standing kitchen caddy and a free-standing receptacle for the storage of refuse  
 Or similar approved



**PROPOSED CYCLE STORAGE**  
 Product: Double Bike Locker  
 Size: Width 900mm Depth 1900mm Height 1205mm  
 Finish: Green with a left-hinged handle.  
 Storage Capacity: 2 Cycles Total Storage 4 Cycles  
 Or similar approved

**Key**

PROPOSED PERMEABLE BLOCK PAVING  
 Product: Hydropave Tegula  
 Supplier: Tobermore  
 Size: 208x173x60mm  
 Colour: Bracken  
 Or similar approved

PROPOSED PEDESTRIAN PERMEABLE BLOCK PAVING  
 Product: Hydropave Tegula  
 Supplier: Tobermore  
 Size: 208x173x60mm  
 Colour: Natural  
 Or similar approved

PROPOSED CAR PARKING DEMARCATION PERMEABLE BLOCK PAVING  
 Product: Hydropave Tegula  
 Supplier: Tobermore  
 Size: 208x173x60mm  
 Colour: Charcoal  
 Or similar approved

PROPOSED KERB EDGING  
 Product: Country Kerb  
 Supplier: Tobermore  
 Size: 255x125x915mm  
 Colour: Granite  
 Or similar approved

PROPOSED FLUSH KERB EDGING  
 Product: Country Kerb  
 Supplier: Tobermore  
 Size: 255x125x915mm  
 Colour: Granite  
 Or similar approved

PROPOSED RAILINGS  
 To architects details

PROPOSED HAWTHORN HEDGE  
 Crataegus monogyna 90-120cm RB  
 Planted at 4 per linear metre  
 available from Hedges Direct

PROPOSED PLANTING  
 Vinca minor 'Atropurpurea' 15-25cm 1L Pot  
 planted at 4 per m<sup>2</sup>

EXISTING METAL STEPS  
 To be retained

EXISTING POST AND RAIL FENCE  
 To be retained

PROPOSED ENTRANCE TOPIARY  
 Taxus baccata cone  
 1.6m - 1.8m tall 35L Pot CG

PROPOSED GREEN SCREEN  
 Carpinus betulus Green Screen  
 1000mm high

PROPOSED BICYCLE STORE  
 Product: Double Bike Locker  
 Supplier: Cyclehoop  
 Size: Width: 900mm Depth 1900mm  
 Height: 1205mm  
 Finish: Green with Left Hinged  
 Storage Capacity: 2 Bicycles Per Locker  
 Total Storage: 4 Bicycles

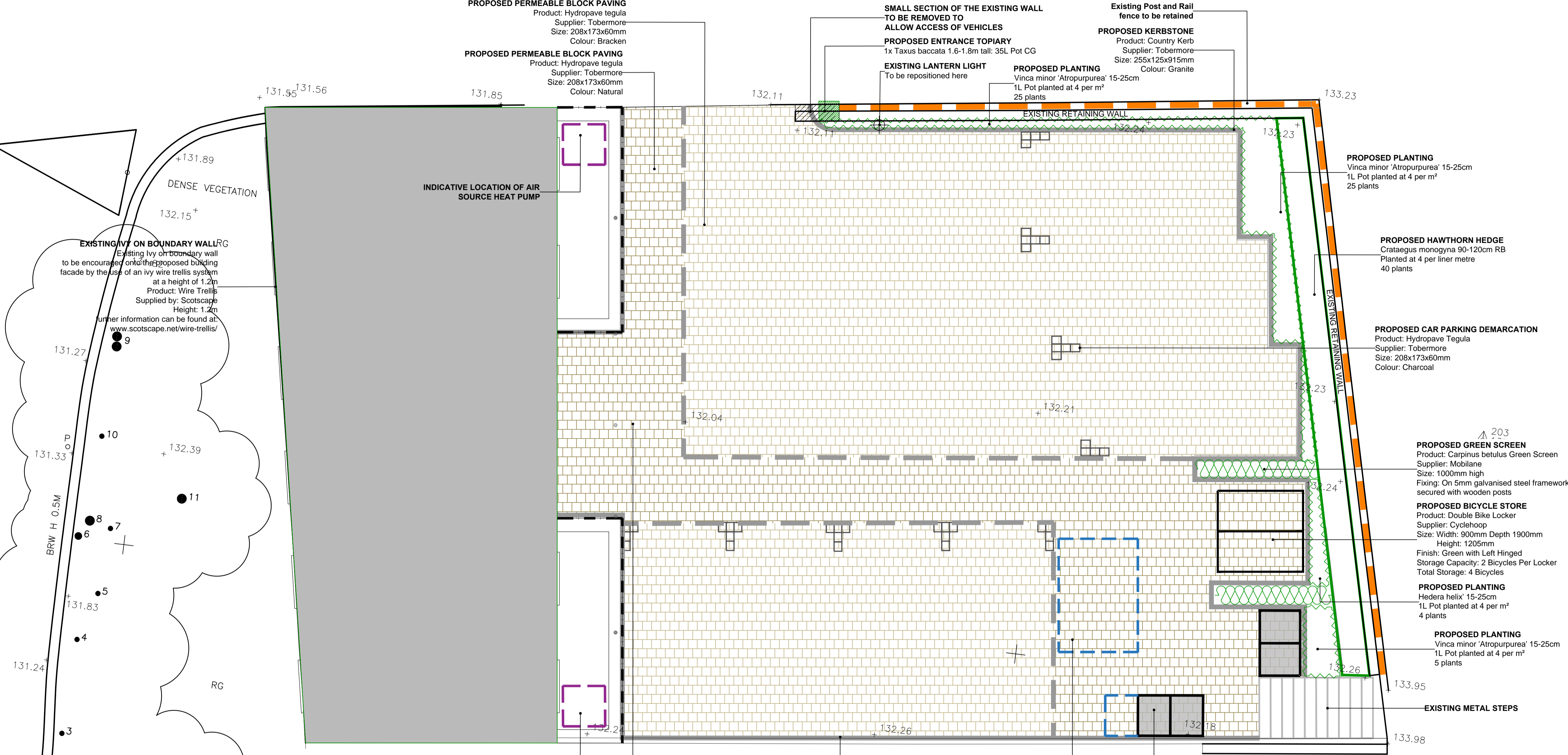
PROPOSED PLANTING  
 Hedera helix 15-25cm  
 1L Pot planted at 4 per m<sup>2</sup>  
 4 plants

PROPOSED PLANTING  
 Vinca minor 'Atropurpurea' 15-25cm  
 1L Pot planted at 4 per m<sup>2</sup>  
 5 plants

EXISTING METAL STEPS  
 To be retained

PROPOSED CYCLE STAND  
 Product: Double Bike Locker  
 Supplier: cyclehoop  
 Size: Width: 900mm Height 1205mm Depth: 1900mm  
 Finish: Green with left hinged  
 Total of 2 Storage Lockers of a total of 4 bicycle spaces

PROPOSED BIN STORE  
 Product: Prestige slatted bin store  
 Supplier: Garden Trellis Co.  
 Size: 1290x2180x900mm  
 Colour: In a Radiata Pine finish with a teak stain  
 To fit a 140l wheellie bin, a free standing kitchen caddy and a free-standing receptacle for the storage of refuse  
 Or similar approved



**OUTLINE SPECIFICATION**

**TREE PROTECTION**  
 Existing trees and shrubs to be retained shall be protected in accordance with the current British Standard 'Trees in relation to construction', generally fencing shall be a 1.2m high cleft chestnut or 1.8m 'Heras' type fencing secured and maintained in position for the duration of construction.

**GENERAL**  
 All planting work & plants shall be in accordance with all approved current/relevant horticultural & British Standard specifications including 'Nursery stock', 'Landscape Operations', 'Trees in relation to Design, Demolition & Construction', 'Tree Work' and the latest National Building Specification, National Plant Specification & HTA 'Handling & Establishing Landscape Plants'. Herbicides, pesticides and other chemicals may only be used with the approval of the CA. Use of chemicals shall be in accordance with all relevant guidelines and the manufacturers recommendations. Imported topsoil shall be a minimum specification of General purpose grade, unless otherwise instructed. 1 cu.m approved compost/organic material/soil ameliorant per 20 sq m shall be cultivated into topsoil before planting. Peat shall not be used. Following planting all shrub beds shall be treated with an approved granular fertiliser at rates recommended by the manufacturer. All ornamental planting beds shall be mulched with 50mm depth medium grade ornamental bark mulch. All hedge and native planting shall be mulched with 75mm depth mushroom compost.

**TOPSOIL**  
 Existing topsoil should be stripped before building works begin. Imported topsoil shall be a minimum specification to current British Standard Multi purpose grade from an approved source in accordance to the above specification, unless otherwise instructed.

**MAINTENANCE**  
 The defects liability period for planting shall be 12 months from completion of the works, maintenance works to the current British Standard. During this period, any plant which is found to be dead, dying or otherwise defective shall be replaced at the expense of the contractor during the next planting season. The contractor shall make maintenance visits as required to ensure the successful establishment of the planting and maintain all shrub areas in a weed free condition. Regular visits (minimum 8 No.) required, to maintain all planted areas in a weed and litter free condition using a combination of chemical spray and hand weeding to be agreed with the Landscape Architect. Maintenance to include watering, pruning, pest and disease control and re-mulching as required to current British Standard. Final visit to be immediately prior to handing over and to include a fertiliser treatment of Enmag (6.20.10) at 100g/m<sup>2</sup> and 25mm depth bark mulch top up to all planted area. Grass mowing at two week intervals during growing season. Maintenance to be carried out in years 2-5 to be agreed.

**PLANTING SCHEDULE**

Species	Size	Density	Number
Carpinus betulus Green Screen	As supplied 1000m high	As Supplied	5.5m
Crataegus monogyna	90-120cm RB	4 per linear m	40
Hedera helix	15-25cm 1L Pot	8 per m <sup>2</sup>	4
Vinca minor 'Atropurpurea'	15-25cm 1L Pot	4m <sup>2</sup>	30
Taxus baccata cone	1.6-1.8m tall CG 35L Pot	AS DWG	1

REV R, 16.04.2021, Minor amendments DC  
 REV Q, 16.04.2021, Minor amendments DC  
 REV M, 26.04.2018, Light wells increased & Car Park amended  
 REV L, 06.04.2018, Minor amendment to the Ivy Trellis System  
 REV K, 03.04.2018, Amendments to cycle store & minor amendments  
 revision / date / description / drawn



client  
**Albany Group**

project  
**Jack Straws Castle**

scale  
 1:100 @ A3

date  
 26.04.2018

title  
**Hard and Soft Landscape Proposals**

drawing number  
**06-681-200-01**

revision  
**R**

**SUPPLIER INFORMATION**

**Paving**  
 Tobermore  
 T: 02879642411  
 W: www.tobermore.co.uk

**Green Screen**  
 Mobillane  
 T: 0203 741 8049  
 T: 02086991338  
 W: www.mobillane.co.uk

**Hawthorn Hedge**  
 Hedges Direct  
 T: 01257 263873  
 W: www.hedgesdirect.co.uk  
 Backfill material to include tree planting compost and slow release fertilizer.

**Yew Topiary**  
 Hedges Direct  
 T: 01257 263873  
 W: www.hedgesdirect.co.uk

**Bin Store**  
 The Garden Trellis Co.  
 T: 01255 688361  
 W: www.gardentrellis.co.uk

**Bike Locker**  
 Cyclehoop  
 T: 02086991338  
 W: www.cyclehoop.com

**Ivy Trellis System**  
 Scotscape  
 T: 02082545000  
 W: www.scotscape.net