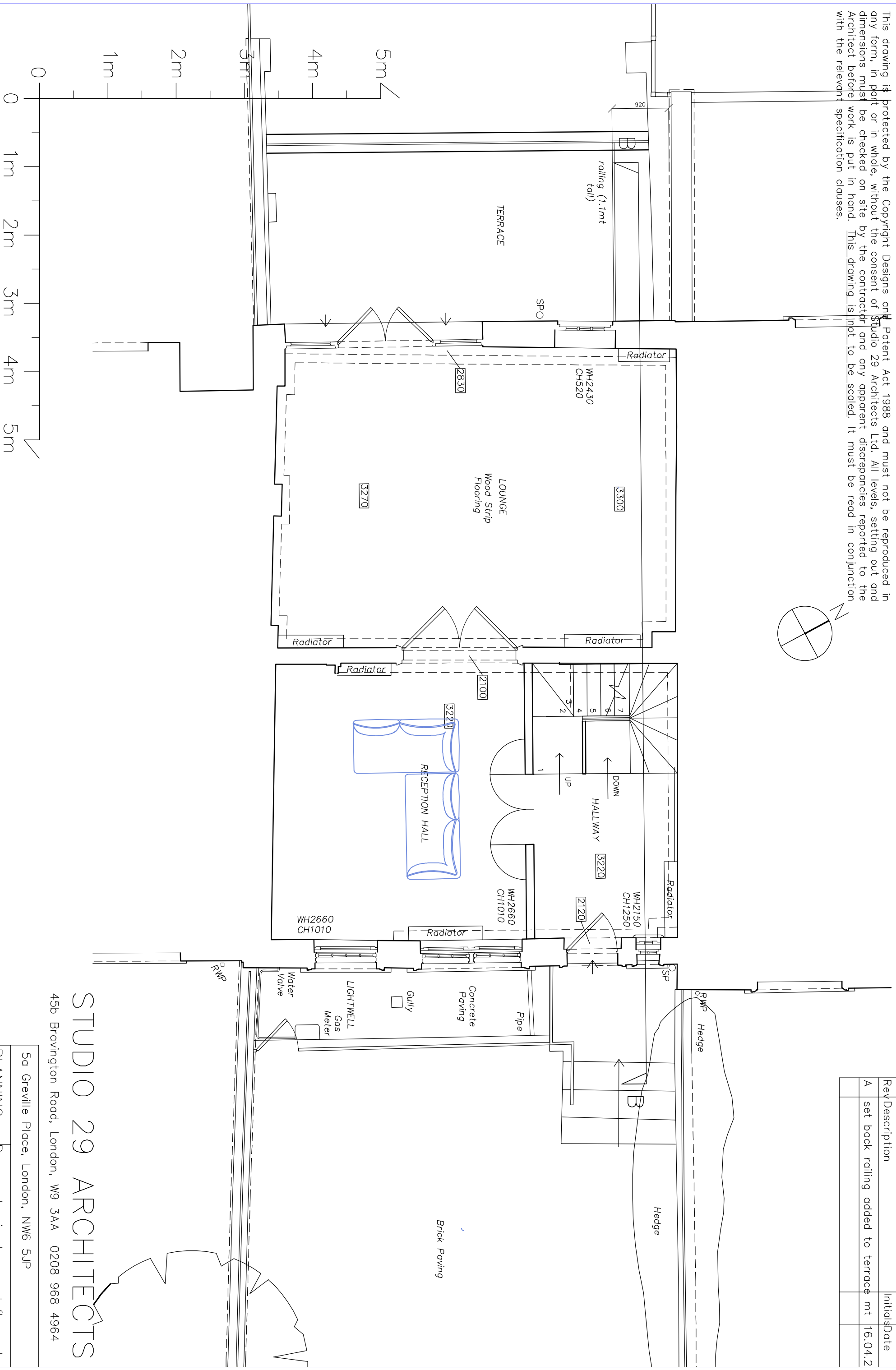
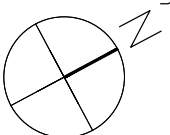


This drawing is protected by the Copyright Designs and Patent Act 1988 and must not be reproduced in any form, in part or in whole, without the consent of Studio 29 Architects Ltd. All levels, setting out and dimensions must be checked on site by the contractor and any apparent discrepancies reported to the Architect before work is put in hand. This drawing is not to be scaled. It must be read in conjunction with the relevant specification clauses.



Rev	Description	Initial	Date
A	set back railing added to terrace mt		16.04.2

STUDIO 29 ARCHITECTS

45b Bravington Road, London, W9 3AA 0208 968 4964

5a Greville Place, London, NW6 5JP

PLANNING	Proposed raised ground floor plan
13.01.21	1:50 @A3 67-03 A