



Planning Condition 19
Cycle Storage Facility

Mount Pleasant Place, Phase 2

Ryder Architecture Limited

33 Gresse Street
London
W1T 1QU
United Kingdom

T: +44 20 7299 0550

info@ryderarchitecture.com
www.ryderarchitecture.com

Newcastle
London
Glasgow
Liverpool
Hong Kong
Vancouver
Amsterdam

Ryder Alliance

Melbourne
Sydney
Perth
Brisbane
Barcelona
Durban
Johannesburg
Cape Town
Bangkok
Shanghai
Seoul
Tokyo

www.ryderalliance.com

Introduction

This document has been prepared by Ryder Architecture on behalf of Taylor Wimpey Central London / McAleer and Rushe to illustrate the cyclist facilities being provided in the vicinity of Block B, C and D (Phase 2) of the Mount Pleasant Place development.

Cycle Facilities

Introduction

This report will be used to discharge LB Camden planning condition (no. 19)

LB Camden Planning Condition No. 19

Cycle Storage / Facilities (Full Details)

Details of the layout, design and appearance of the bicycle storage areas shall be submitted to and approved in writing by the Local Planning Authority prior to any superstructure works commencing on the relevant Section. The provision shall comprise at least 275 residential occupier cycle spaces with the southern Section comprising building A and at least 156 residential occupier cycle spaces with the northern Section comprising buildings B, C & D, 36 residential visitor spaces and 7 commercial occupier spaces) shown on the approved drawings as set out in condition 2 above, and end of trip cyclist facilities. The approved cycle storage / facilities shall be provided in full within each Section prior to the first occupation of the relevant use within that Section, and thereafter retained, unless otherwise approved in writing by the Local Planning Authority.

The marked up general arrangement plans that follow highlight where each facility is located, and the number of cycle spaces in each position. Data sheets for the cycle stands are provided at the back of the report.

To summarise, Phase 2 Block B, C and D provides the following:

- Secure bike storage for 156 resident spaces as indicated on plans.
- 36 visitor cycle spaces as indicated on plans
- 12 commercial occupier spaces provided in Square P

Secured by Design

The bicycle security anchor shall also be certificated to 'Sold Secure' Silver Standard or LPS 1175 Issue 7.2 (2014) SR1 and securely fixed to the concrete foundation in accordance with the manufacturer's specifications.

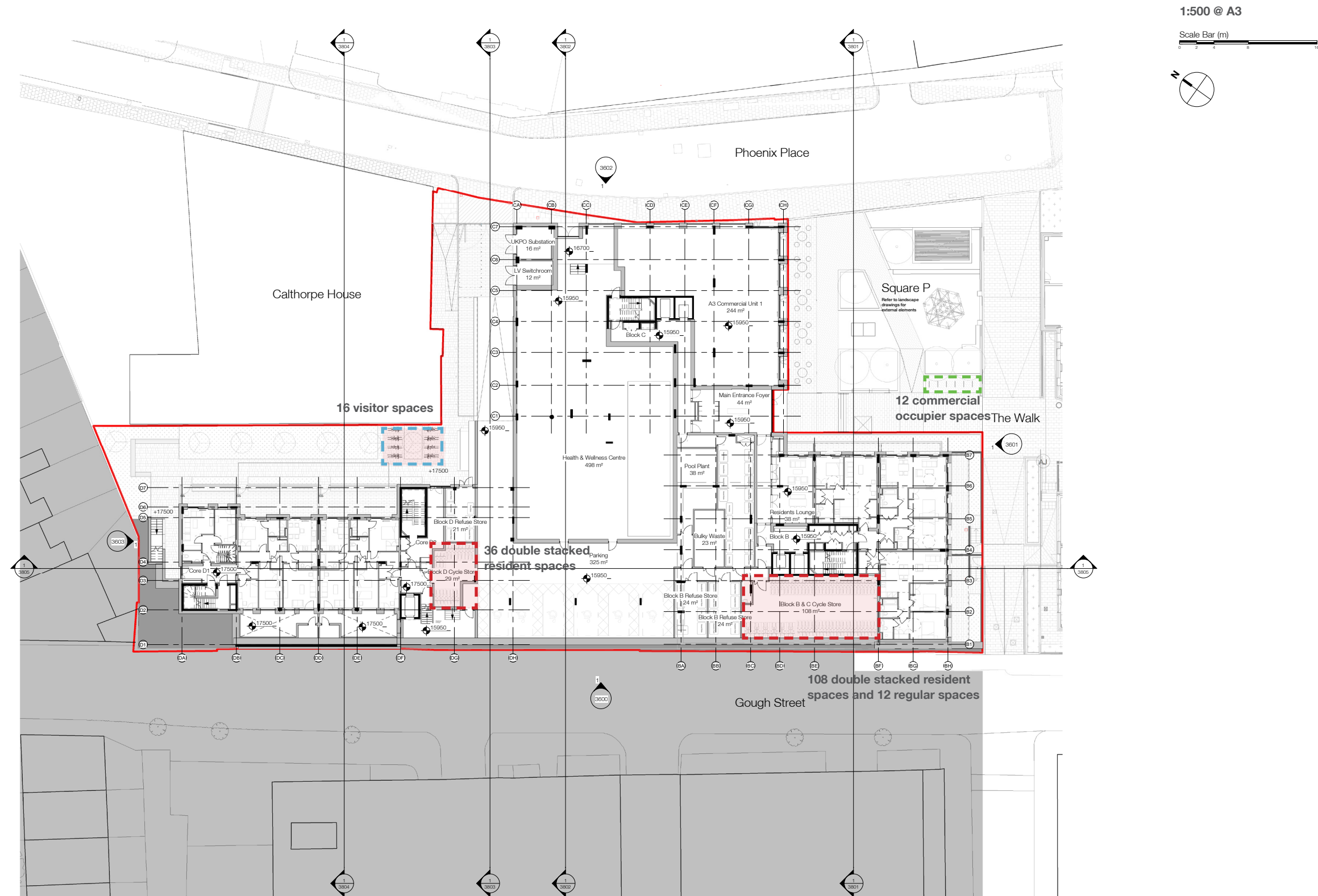
Phasing

The appendices drawings to this report

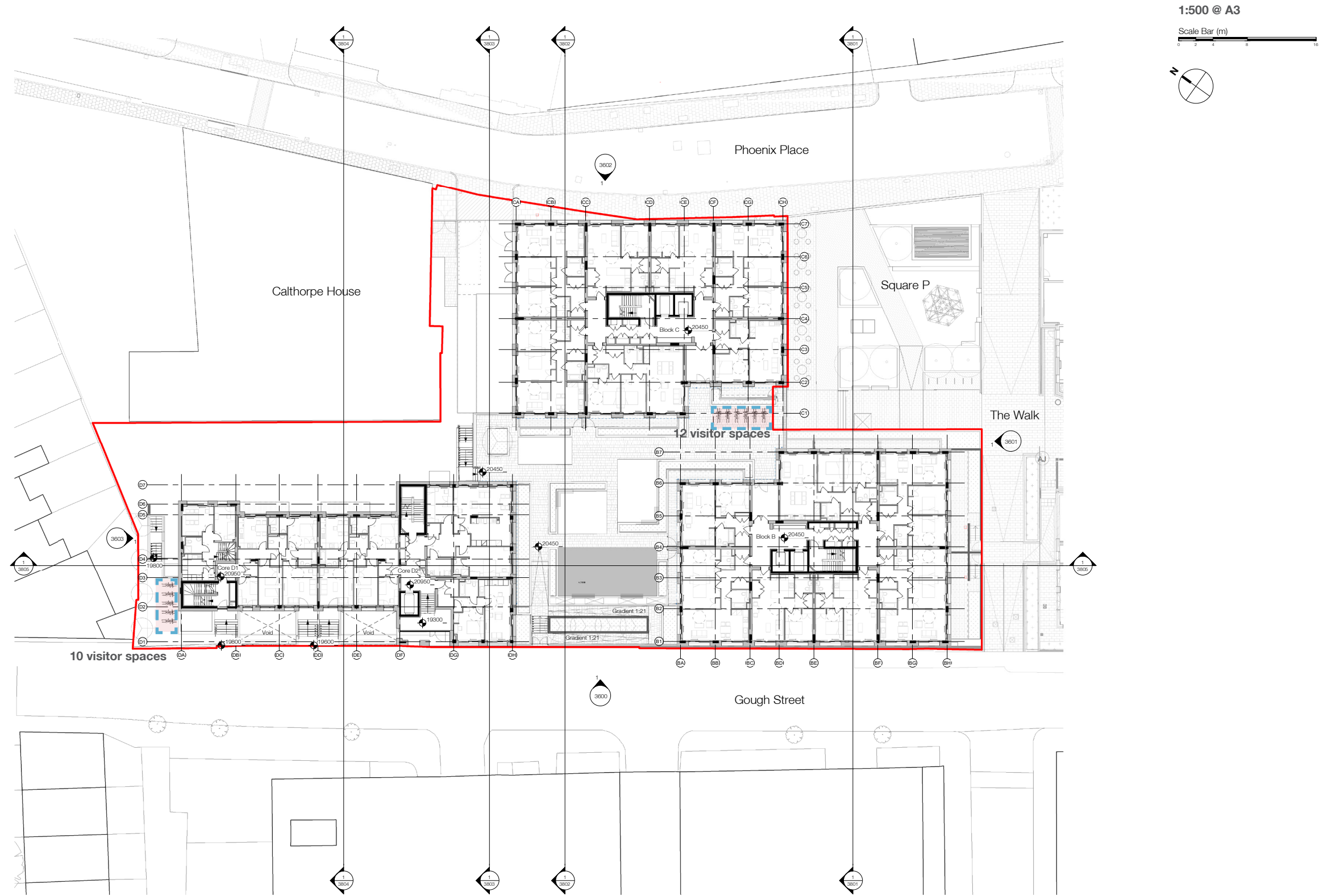
summarises the phasing/ sectional completion of Phase 1 (Block A) and the Phase 2 (Blocks, B,C,D). The adjacent site plan identifies the proposed 12 covered commercial cycle spaces in Square P.



Cycle Facilities General Arrangement Plan



Cycle Facilities General Arrangement Plan

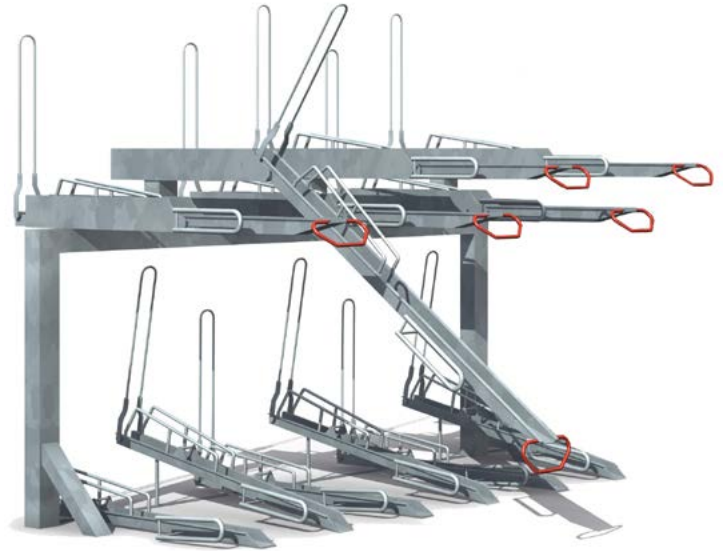




cycle-works

The Cycle Storage Specialists

cycle-works.com • 02392 815 555



Product Specification

Josta 2-tier High Capacity Rack

Description

The 2-tier racks are designed to get the maximum number of bikes into a limited space, in a safe, easy to use way. There are many unique features of the Josta racks, including the low, easy to use handles, the clever, patented way the bikes are held on the racks, and the general ease of use. They are also designed for a long, tough life of constant heavy use, with low maintenance. However, the most important factor is always Safety, and the Josta racks are very safe to use. This is a particularly important feature for heavy bikes.

Features

- Double the capacity of bicycle storage spaces
- Easy and safe to use
- Space efficient
- Flexible and adaptable
- Neat and organised
- Individual racking – one bike per space
- Low maintenance
- Patented gripping system holds bike securely
- Maximises cycle parking spaces
- BREEAM compliant
- Framework can be coloured in any standard RAL colour

Construction

This Rack is made from pre-galvanised and mild steel, the framework can be powder-coated in any RAL colour.

Dimensions

- A minimum headroom of 2600mm is required for maximum capacity.
- 300mm to any adjoining side wall.
- Minimum of 400mm centres (450mm recommended).
- Allow 2000mm for the rack itself, plus a minimum of 1700mm in front for access.
- The racks can also be installed from a central spine. For this option, please leave 2000mm for access on both sides. The 2-sided unit is then 3100mm wide.
- Racks can also be installed at a 45 or 55 degree angle to minimise space.

Optional (£POA)

- Duisburg legs (legs for concrete floor)
- Powder coated framework

Cycle-Works
8-9 Rodney Road
Portsmouth
Hampshire
PO4 8BF

t 02392 815 555
f 02392 815 544
e info@cycle-works.com
w cycle-works.com

Cycle-Works Ltd
Registered in England 3268339





cycle-works

The Cycle Storage Specialists

cycle-works.com • 02392 815 555

Product Gallery



Cycle-Works
8-9 Rodney Road
Portsmouth
Hampshire
PO4 8BF

t 02392 815 555
f 02392 815 544
e info@cycle-works.com
w cycle-works.com

Cycle-Works Ltd
Registered in England 3268339



Sheffield Cycle Stand

BXMW/GS/Sheffield-Stand

The Sheffield Cycle Stand is recommended by the national cycling associations, this best selling tubular cycle stand allows the bike to be secured in a variety of ways.

Capacity:

- 2 Cycles

Standard Single Unit Size:

- Width: 715mm
- Height: 800mm
- Junior stands are 600mm high
- Diameter: 48.3mm
- Recommended spacing between cycle stands: 800mm

Features:

- Simple and easy to install
- Stands are available in Senior and Junior sizes

Fixings:

- Root Fixed
- Baseplate Fixed

Finishes Available:

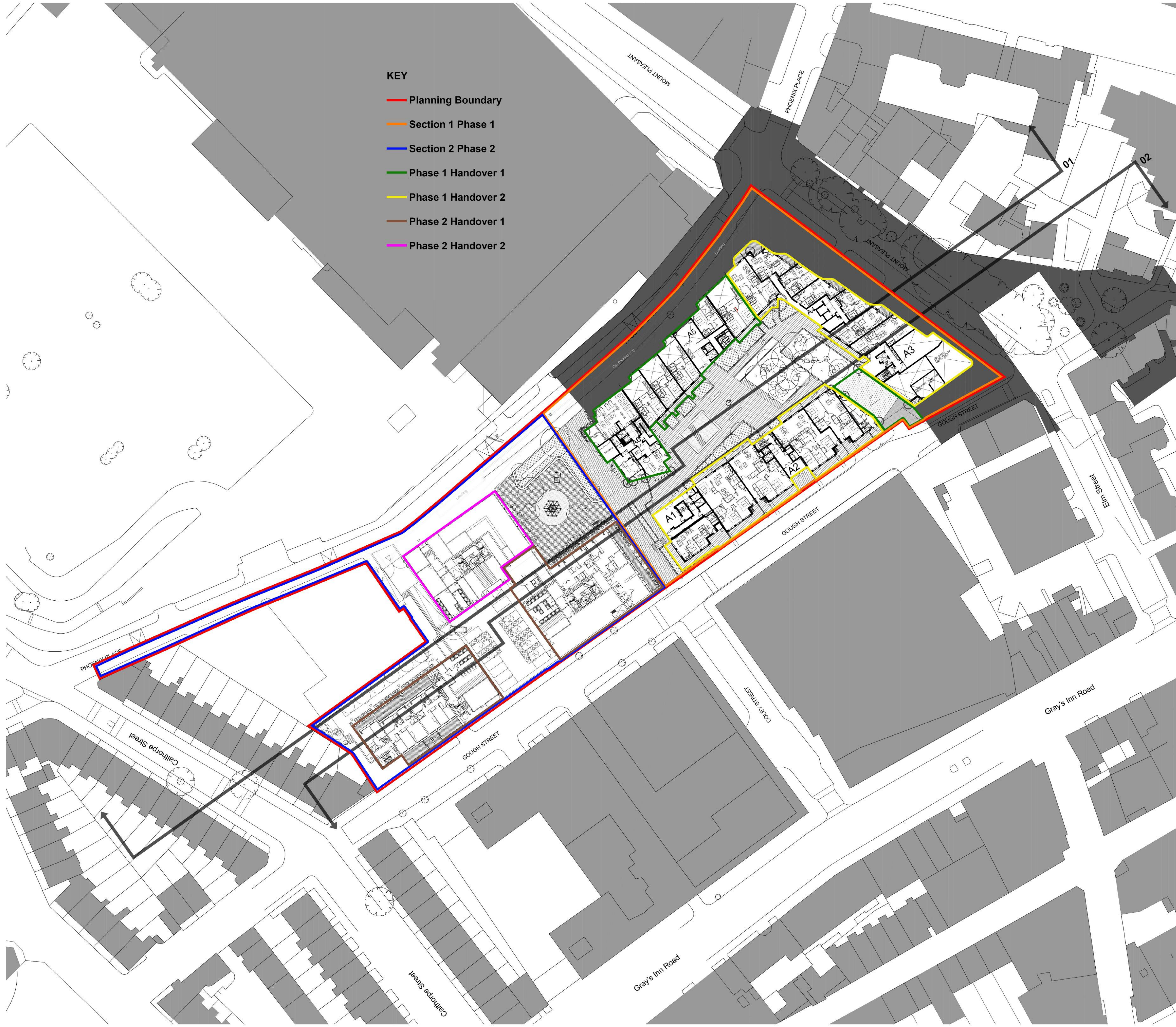
- Galvanised to BS EN ISO 1461:2009
- Galvanised to BS EN ISO 1461:2009 & Polyester Powder Coated
- Stainless Steel Grade 304
- Stainless Steel Grade 316
- Duracast™ Polyurethane version (a long lasting environmentally friendly material that is rust proof and can also be painted to a range of colours)



Broxap Ltd., Rowhurst Industrial Estate, Chesterton, Newcastle-under-Lyme, Staffordshire, ST5 6BD

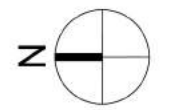
All dimensions are in millimeters, weights in kilograms and capacities in litres, are approximate and do not form any part of the contract. All prices are guide prices only and should be used for estimating purposes only. Broxap Limited reserve the right to change the design, specification or price of any item sold at any time.

All prices exclude VAT and delivery.



- KEY**
- Planning Boundary
 - Section 1 Phase 1
 - Section 2 Phase 2
 - Phase 1 Handover 1
 - Phase 1 Handover 2
 - Phase 2 Handover 1
 - Phase 2 Handover 2

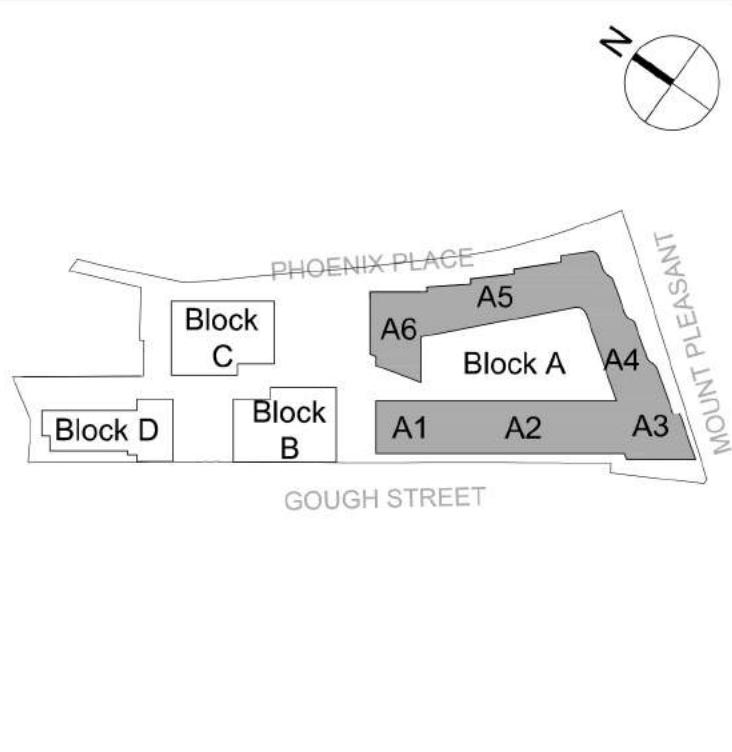
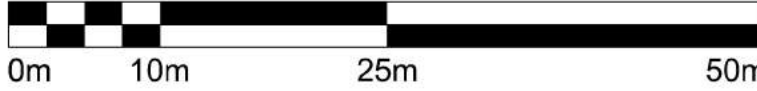
Contractors and consultants are not to scale dimensions from this drawing



Reproduced by permission of Ordnance Survey on behalf of HMSO
© CROWN COPYRIGHT and database right 2008 All rights reserved
Ordnance Survey Licence number AL 1000 22432 Broadway Malyan Limited

The survey information shown on this drawing is based on a topographical survey prepared by a third party and Broadway Malyan Limited accept no responsibility for the accuracy or completeness of the survey.

Please note: Drawings to read in conjunction with the associated Design & Access Statement, associated documents and landscape information.



P01	18-02-09	Non-Material Amendments
P02	18-04-10	Phasing line colours revised
Revision	Date	Description

BroadwayMalyan^{BM}

Eastgate, 2 Castle Street
Castlefield, Manchester
M3 4LZ

T: +44 (0)161 819 2277
F: +44 (0)161 819 2332
E: Man@BroadwayMalyan.com

www.BroadwayMalyan.com

Client
Taylor Wimpey Central London
Project
**RMG Mount Pleasant
Phoenix Place Plot 1**
Description
**Site Wide Proposed Plan
Block A Upper Ground Plan
Level G01**

NON-MATERIAL AMENDMENTS

Scale	Drawn By	Date
1:500@A1	LW	FEB 18
Job Number	Drawing Number	Revision
32875	P-01-G01	P02