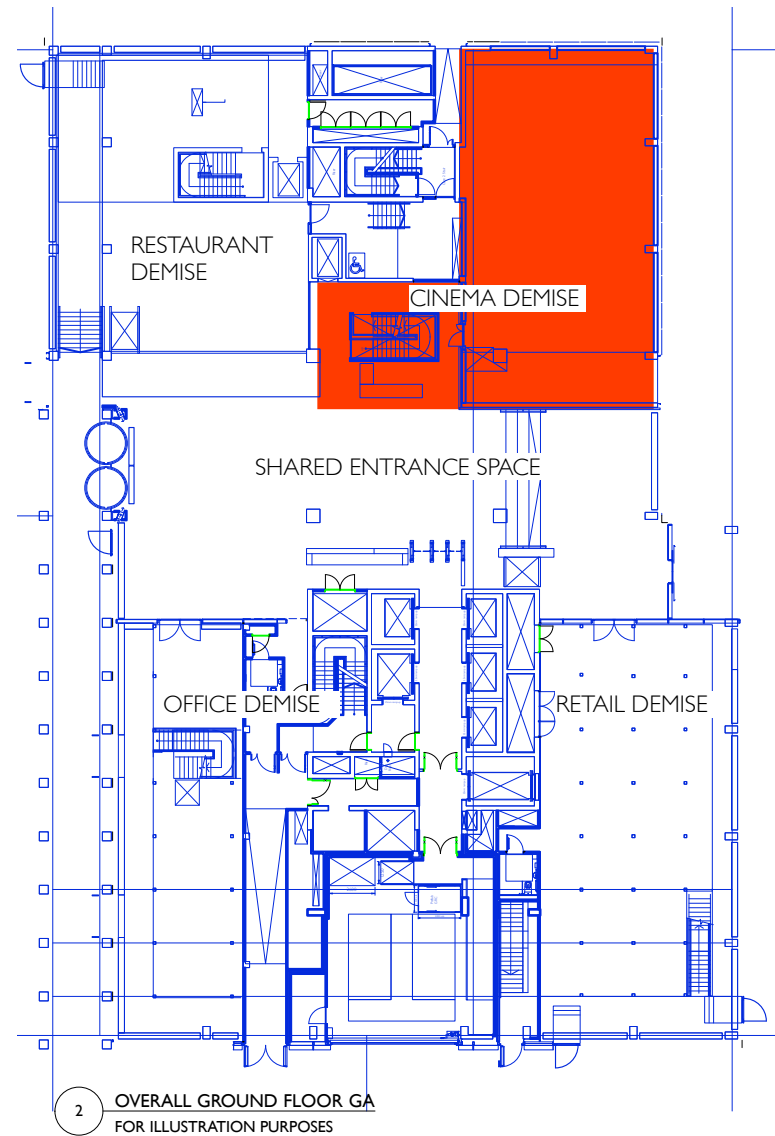
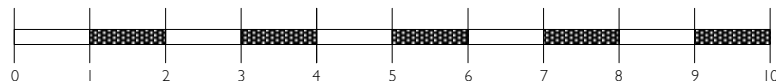


1 CINEMA GROUND FLOOR GA
1:50@A1/ 1:100 @A3

SCALE IN METRES:



2 OVERALL GROUND FLOOR GA
FOR ILLUSTRATION PURPOSES

FIRE SAFETY STANDARDS AND TECHNICAL NOTES FOR LICENCING APPLICATIONS

- 1) DOORS AND PARTITIONS REQUIRED TO BE FIRE RESISTING ARE IN ACCORDANCE WITH BS475, 1972 AS AMENDED
- 2) FIRE RESISTING DOORS REQUIRED TO RESIST THE PASSAGE OF SMOKE AT AMBIENT TEMPERATURE CONDITIONS ARE, UNLESS TESTED IN ACCORDANCE WITH BS476, SECTION 31.1, 1983, FITTED WITH A SMOKE SEAL.
- 3) THE FIRE ALARM SYSTEM COMPLIES WITH BS 5839 PART 1, 2002. THE ATTENTION OF THE DESIGN/INSTALLING ENGINEER SHOULD BE DRAWN TO PARAGRAPH 3.1 (CONSULTATIONS AND RECORDS) OF BS 5839, PART 1, 2002, WHICH REQUIRES CONSULTATIONS TO BE MADE WITH THE FIRE AUTHORITY.
- 4) THE EMERGENCY LIGHTING INSTALLATION IS TO COMPLY WITH BS5266, PART 1, 1999. THE ATTENTION OF THE DESIGN/INSTALLING ENGINEER SHOULD BE DRAWN TO PARAGRAPH 3.1 (CONSULTATIONS AND RECORDS) OF BS 5839, PART 1, 2002, WHICH REQUIRES CONSULTATIONS TO BE MADE WITH THE FIRE AUTHORITY.
- 5) FIRE SAFETY RELATED SIGNS AND NOTICES CONFORM WITH BS5499, PART 1, 1990.
- 6) ILLUMINATED "EXIT" SIGNS CONFORM WITH BS2560
- 7) FIRE FIGHTING EQUIPMENT TO COMPLY WITH BS5423, 1987, AND BS5306 PART 3 1985
- 8) UPHOLSTERED SEATING FURNITURE MUST SATISFY AS A MINIMUM STANDARD IGNITION SOURCE 0 (CIGARETTE TEST) AND CRIB IGNITION SOURCE 5 AS SPECIFIED IN BS 5852, 1990. "METHODS OF TEST FOR ASSESSMENT OF THE IGNITABILITY OF UPHOLSTERED SEATING BY SMOLDERING AND FLAMING IGNITION SOURCES"
- 9) IF IN ORDER TO SOURCE COMPLIANCE WITH THE ABOVE STANDARDS THE FABRIC SUBMITTED FOR TEST BEEN TESTED BEFORE HAND WITH A FIRE RETARDANT PRODUCT, THE TESTING LABORATORY MUST BE INSTRUCTED TO SUBJECT THE SAMPLES SO TREATED TO WATER SOAK TEST IN ACCORDANCE WITH BS5851, 1989, PARAGRAPH 3, BEFORE THE BS 5852 TESTS ARE CARRIED OUT.

- 10) A COPY OF THE LABORATORY TEST REPORT FROM AN ACCREDITED TESTING LABORATORY IDENTIFYING COMPLIANCE OF THE FURNISHING COMPOSITE WITH THE ABOVE MENTIONED BRITISH STANDARDS MUST BE FORWARDED TO THIS AUTHORITY BEFORE INSTALLATION AND CONFIRMATION THAT THE FURNISHINGS SPECIFIED IN THIS CERTIFICATE HAVE BEEN INSTALLED IN THE PREMISES. 1) CURTAINS AND OTHER TEXTILE HANGINGS MUST BE INHERENTLY FLAME RETARDANT OR L BE TREATED WITH A DURABLE FLAME RETARDANT. THEY MUST BE CAPABLE OF COMPLYING WITH "TYPE B" PERFORMANCE REQUIREMENTS AS SET OUT BY BS5867, PART 2, 1980, "SPECIFICATION FOR FABRICS FOR CURTAINS AND DRAPES- FLAMMABILITY REQUIREMENTS".
- 12) ARTIFICIAL FOLIAGE AND OTHER DECORATIVE EFFECTS ARE TO BE FIRE RETARDANT TO THE SATISFACTION OF THE FIRE AUTHORITY.
- 13) LININGS AND SURFACE FINISHES OF WALLS AND CEILINGS HAVE A SURFACE SPREAD OF FLAME RATING AS DEFINED IN THE BUILDING REGS 1991.
- 14) TEXTILE FLOOR COVERINGS CONFORM TO BS5287 WHEN TESTED IN ACCORDANCE WITH BS4790, 1987.
- 15) CERTIFICATES OF INSTALLATION TEST WILL BE REQUIRED IN RESPECT OF ITEMS NUMBERED 3.4.6.8 AND 9 ABOVE AND MAY BE REQUIRED FOR ITEM 2.
- 16) ALL FIRE ESCAPE DOORS TO INCORPORATE PANIC TYPE OPENING LATCHES FOR EMERGENCY ESCAPE.

Notes

This drawing should not be scaled. The contractor is to verify all dimensions and conditions on site. This drawing is the property of Hudson Rock Design Ltd and they reserve the copyright. It is issued on the understanding that it will not be copied, reproduced or disclosed in whole or in part to any unauthorised party without written permission.

KEY

	ALARM VISUAL BEACON
	ALARM SOUNDER
	FIRE INDICATOR PANEL
	EMERGENCY LIGHTING 3 HOUR NON MAINTAINED
	SMOKE DETECTOR
	HEAT DETECTOR
	CO2 EXTINGUISHER
	FOAM EXTINGUISHER
	WATER EXTINGUISHER
	CALL POINT
	FIRE BLANKET
	1/2 HOUR FIRE RESISTANT SELF CLOSING DOOR WITH SMOKE SEALS AND INTUMESCENT STRIPS
	1 HOUR FIRE RESISTANT SELF CLOSING DOOR WITH SMOKE SEALS AND INTUMESCENT STRIPS
	FIRE EXIT DOORS FITTED WITH EMERGENCY PUSH BAR FACILITY
	SIMPLE FASTENING
	VISION PANEL
	SIGN - EMERGENCY
	SIGN- EMERGENCY EXIT NOTICE - INDICATES THAT THE NOTICE IS INTERNALLY ILLUMINATED
	SIGN- FIRE DOOR KEEP SHUT
	SIGN- FIRE DOOR KEEP LOCKED
	CCTV CAMERA
	POINT OF CUSTOMER ACCESS
	FIRE ESCAPE ROUTE
	DEMISE

EMERGENCY LIGHTING/ SMOKE DETECTION
LAYOUT IS INDICATIVE. CONTRACTOR TO COMPLY
WITH RELEVANT BRITISH STANDARD

DATE	REVISION	NO.
------	----------	-----

PROJECT **EVERYMAN CINEMA**
KINGS CROSS
HANDYSIDE ST
LONDON
N1C 4BZ

DRAWING **GROUND FLOOR
GENERAL ARRANGEMENT
FOR LICENSING**

STATUS **FOR INFORMATION**

DATE:
SEPT 2015

DRAWN:
RH

SCALE:
1:50@A1
1:100@A3

DRAWING NUMBER: **007KGX/ 110**

REV. NO.



Hudson Rock Design Ltd Unit 3, 410 Hackney Road, London, E2 7AP

Hudson Rock Design is a UK Registered Company 9207554