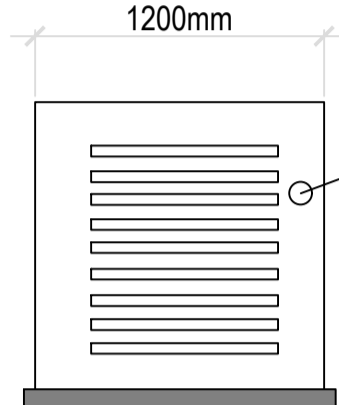
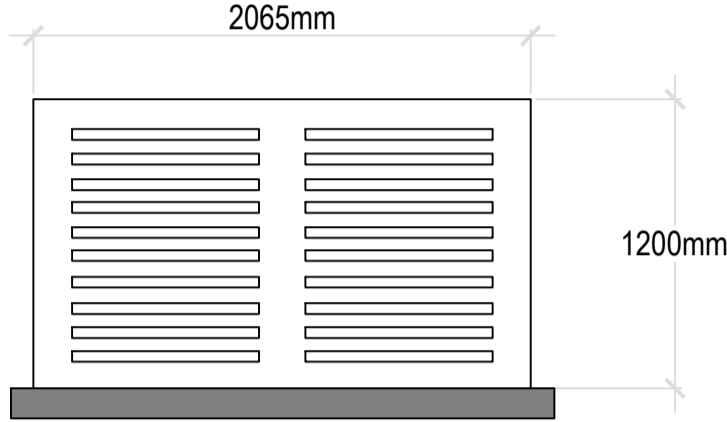
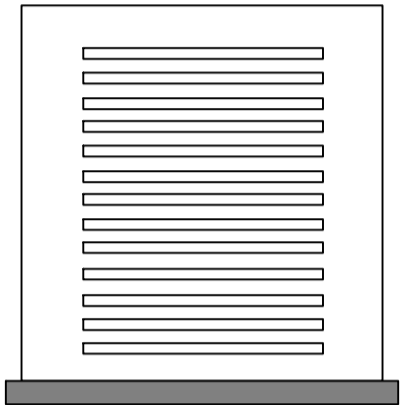
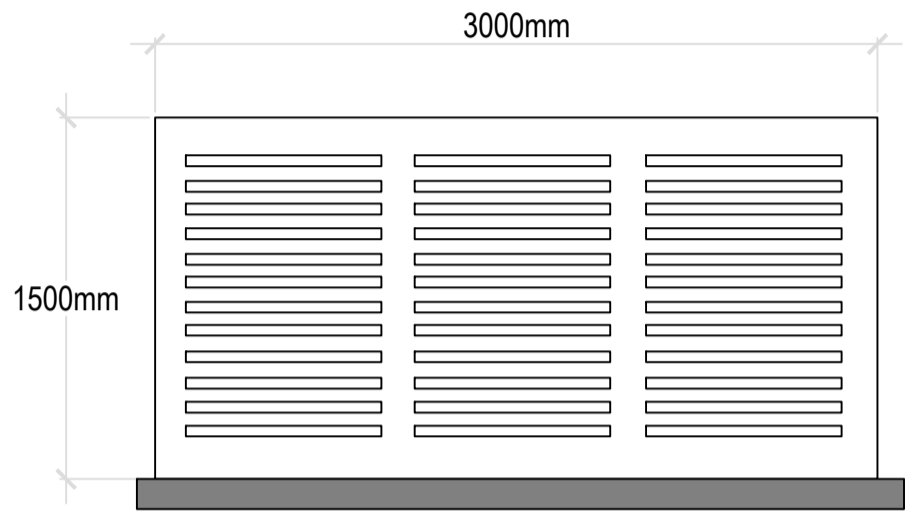
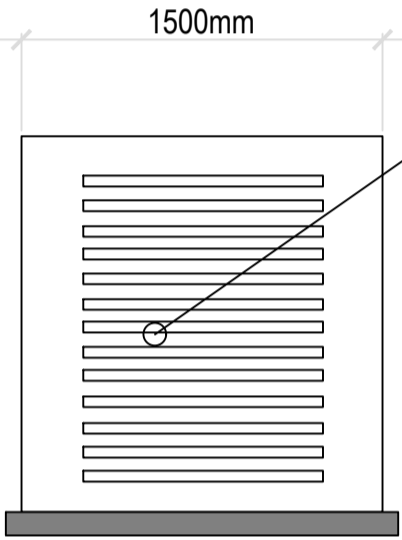
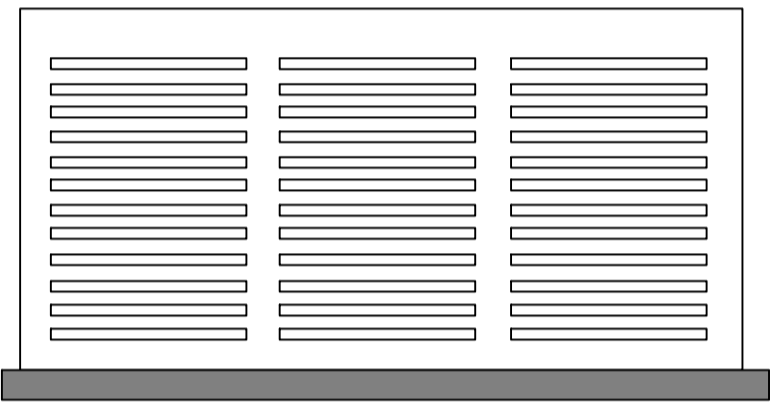


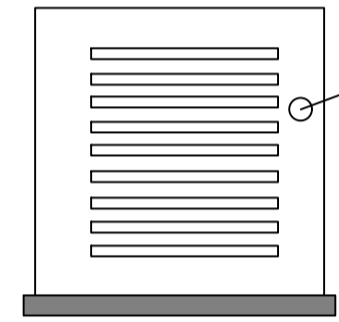
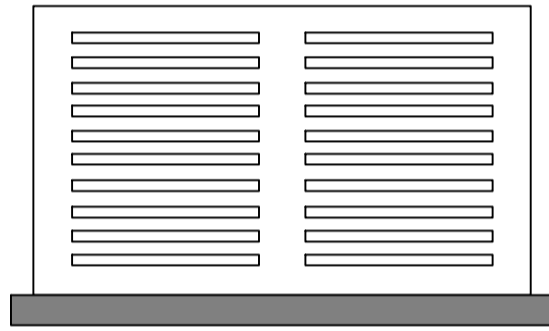
ALL WORKING DIMENSIONS TO BE CHECKED ON SITE.
FIGURED DIMENSIONS TO BE TAKEN IN PREFERENCE TO SCALED
DIMENSIONS.
ANY DISCREPANCIES BETWEEN DRAWINGS OF DIFFERING SCALES
AND BETWEEN DRAWINGS AND SPECIFICATION WHERE
APPROPRIATE TO BE NOTIFIED TO SUPERVISING OFFICER FOR
DECISION.
COPYRIGHT RESERVED.



POWDER COATED STEEL
ENCLOSURE



NOISE LEVEL 10dbs BELOW
BACKGROUND NOISE LEVEL.

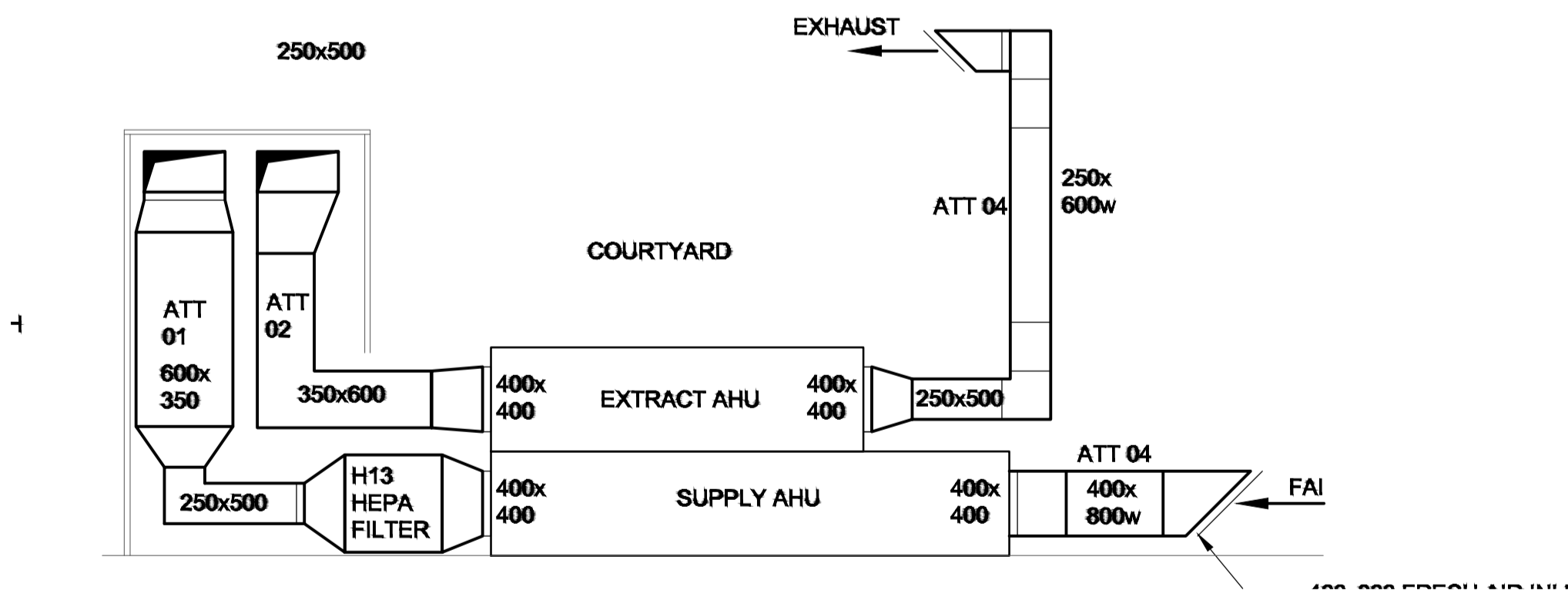
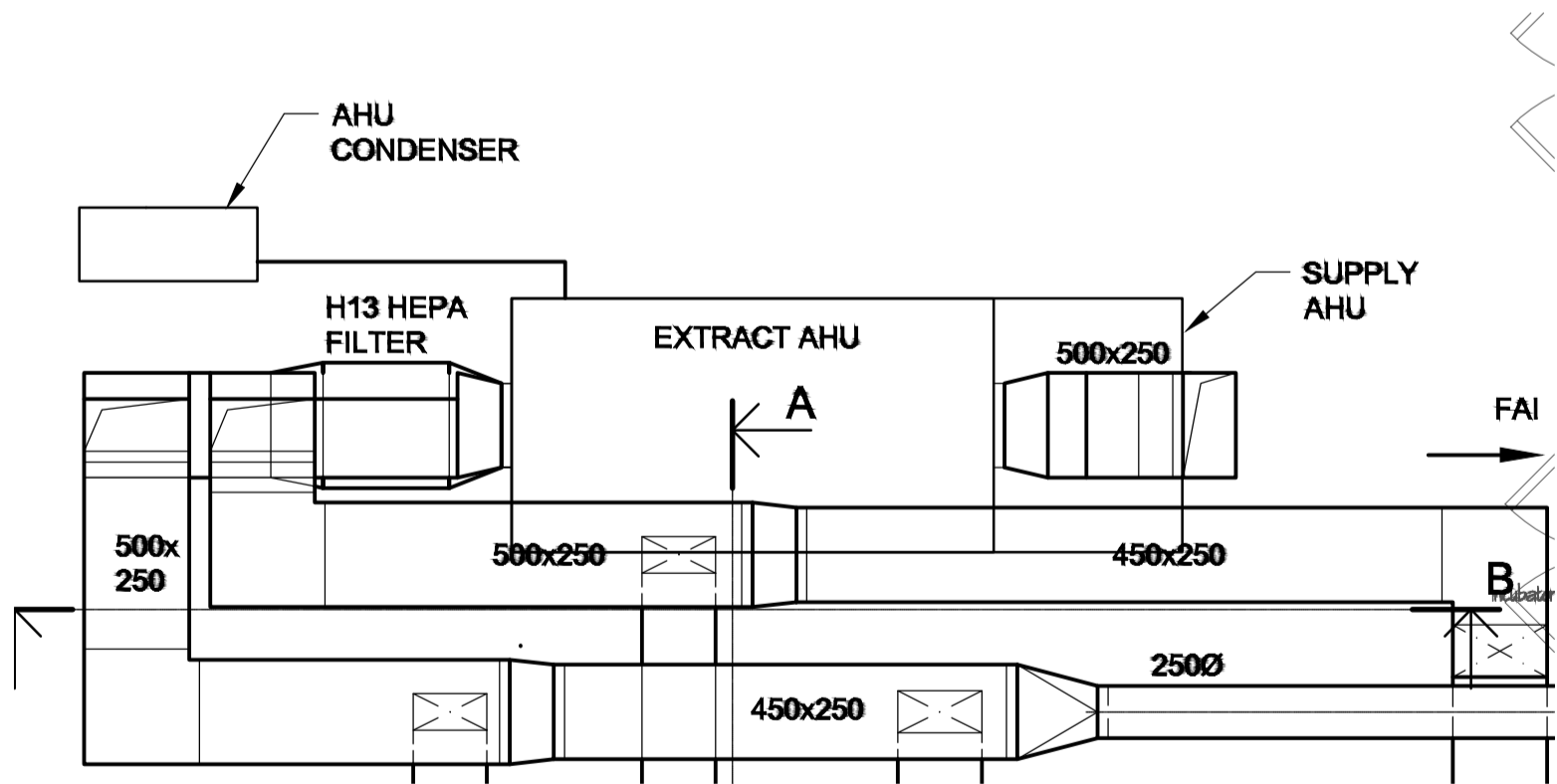


NOISE LEVEL 10dbs BELOW
BACKGROIUND NOISE LEVEL.

AHU ENCLOSURE

CONDENSER ENCLOSURE

PLANS SHOWING ACOUSTIC ENCLOSURES IF THEY ARE FOUND
TO BE REQUIRED FOLLOWING RESULTS OF NOISE SURVEY



ELEVATION SHOWING AHU

PLANNING

JOB TITLE IVF FERTILITY CLINIC 1-5 CHRISTOPHER PLACE LONDON NW11JF	
CLIENT BPAS	
DRAWING ELEVATIONS OF PROPOSED AIR HANDLING UNIT	
<div><div><div>RIBA</div><div>Chartered Practice</div><div>RICS</div></div><div><div>wilby & burnett</div><div>Provident House, 123 Ashdon Road, Saffron Walden, Essex, CB10 2AJ T: 01799 513621 info@wilbyburnett.co.uk www.wilbyburnett.co.uk Wilby & Burnett LLP is a Limited Liability Partnership registered in England & Wales No. OC345370 Regulated by RICS</div></div></div>	
DATE APRIL 2020	DRAWN BY WE
SCALE 1:50 @ A1	CHECKED BY
DWG NO. 3432/1/PD03 Planning	REVISION